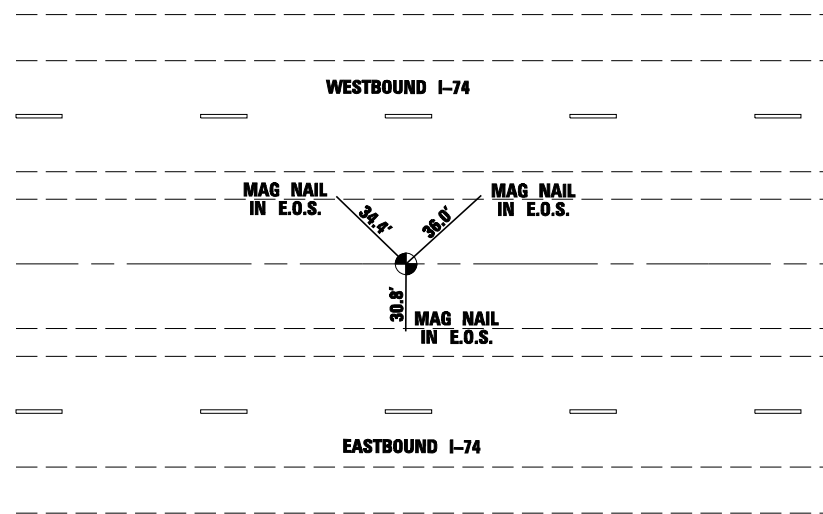
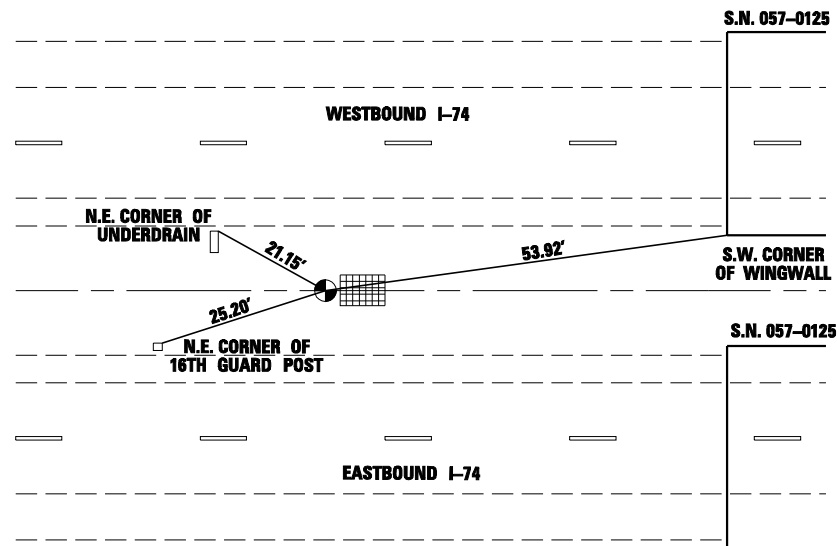


**TIE POINT LAYOUT**

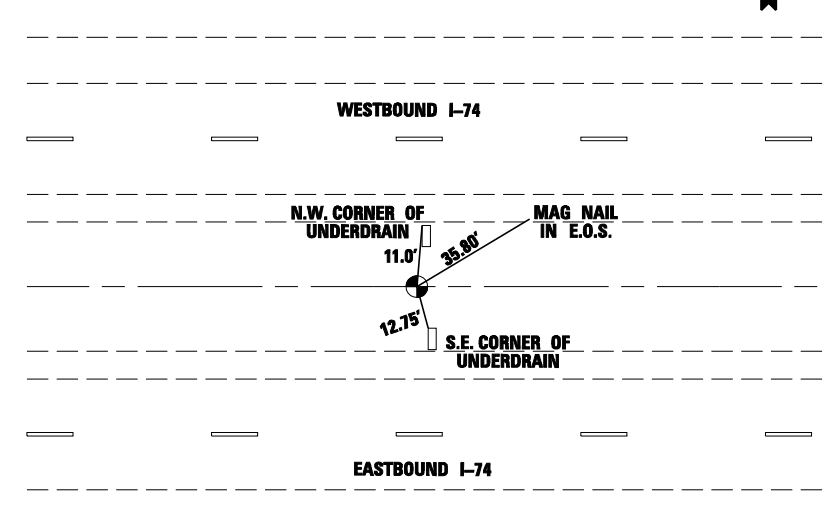
**P.O.T. #4 1012 + 43.82**  
**O/S = 0.0'**



**P.O.T. #3 1037 + 48.27**  
**O/S = 0.25' RT**



**P.O.T. #1 1060 + 00.81**  
**O/S = 0.0'**



**BENCHMARK DESCRIPTIONS**

**4818-1**

STA. 1051+02 Elev. 760.49  
 O/S = 0.15' RT  
 Description: Brass Stem  
 Location: To reach from the intersection of I-74 and Kickapoo Creek, go east on I-74 for 1300' to mark on the left. Said mark is a broken brass stem on the west side of a concrete drop box. Drop box is located 50' east of a turn around.

**4818-3**

STA. 1037+98 Elev. 759.32  
 O/S = 28.8' RT  
 Description: Chiseled Square  
 Location: Said mark is a chiseled square located on the top of the NW wingwall of the South structure over Kickapoo Creek on I-74.

**TEMP-1**

Elev. 759.26  
 Location: Northeast corner of the northeast wingwall on structure #057-0125 eastbound I-74.

**70671**

Elev. 758.94  
 Location: Northeast corner of the approach parapet on structure #057-0126 westbound I-74.

FILE NAME = c:\projects\d505207 (v8)\70672_text.dgn	USER NAME = collierbw	DESIGNED -	REVISED -	<b>STATE OF ILLINOIS DEPARTMENT OF TRANSPORTATION</b>	<b>I-74 OVER KICKAPOO CREEK - TIE POINTS /BENCHMARKS</b>			F.A.I. RTE.	SECTION	COUNTY	TOTAL SHEETS	SHEET NO.
	PLOT SCALE = 41.5800' / IN.	DRAWN -	REVISED -					74	(57-22)BR-3	MCLEAN	42	8
PLOT DATE = 12/21/2007	CHECKED -	REVISED -	SCALE:      SHEET NO.    OF    SHEETS    STA.                    TO STA.				CONTRACT NO. 70672					
	DATE -	REVISED -	FED. ROAD DIST. NO.    ILLINOIS FED. AID PROJECT									