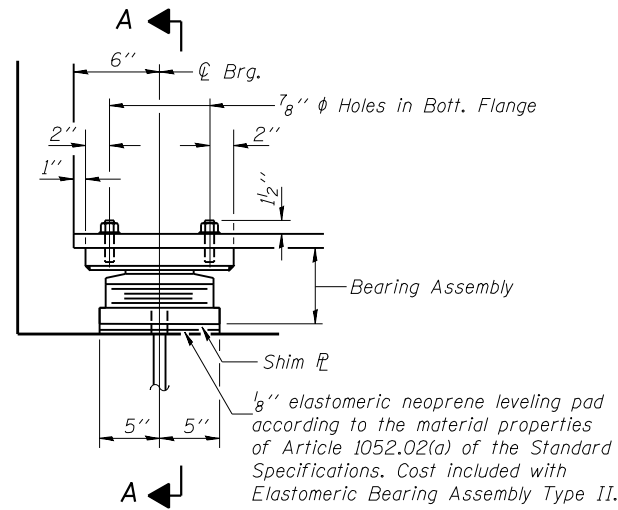


STATE OF ILLINOIS  
DEPARTMENT OF TRANSPORTATION

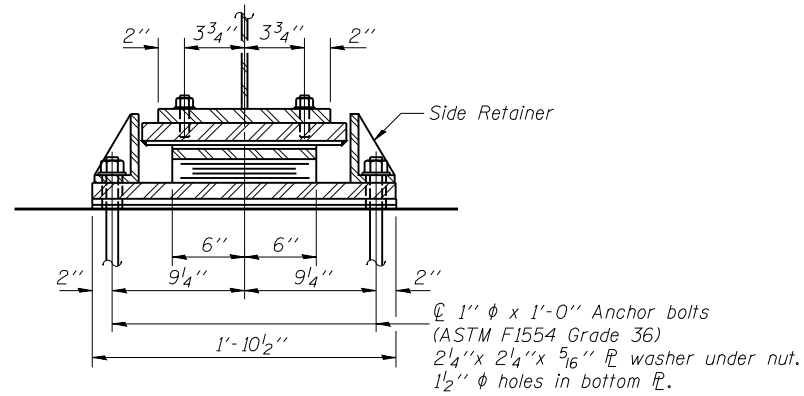
ROUTE NO.	SECTION	COUNTY	ISLAND SHEETS	SHEET NO.	SHEET NO. 17 24 SHEETS
FAI 74	(57-22) BR-3	MCLEAN	42	28	
FED. ROAD DIST. NO. 7	ILLINOIS	FED. AID PROJECT			

Contract #70672

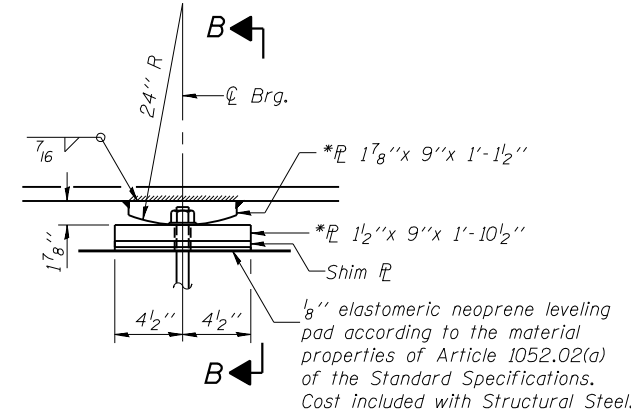


ELEVATION AT EAST ABUT.

TYPE II ELASTOMERIC EXP. BRG.

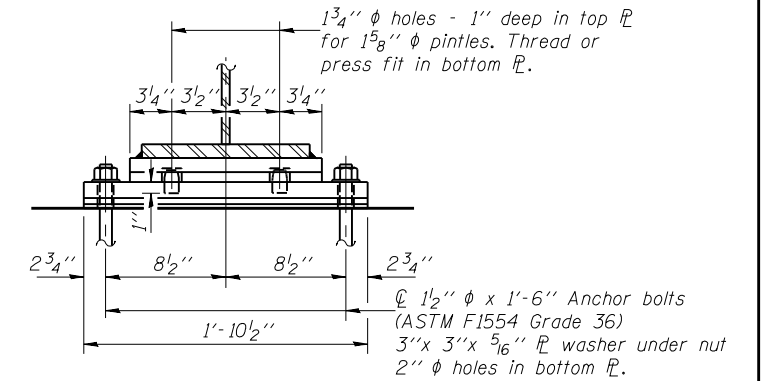


SECTION A-A

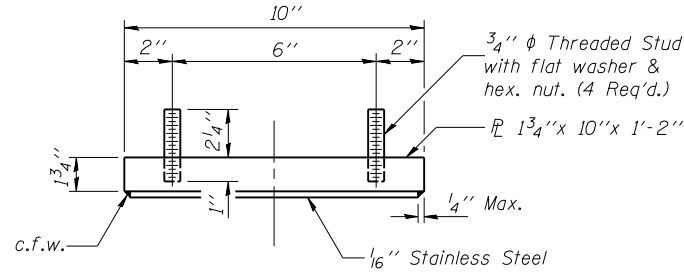


ELEVATION AT PIER 1

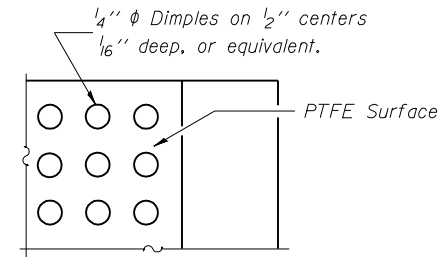
FIXED BEARING



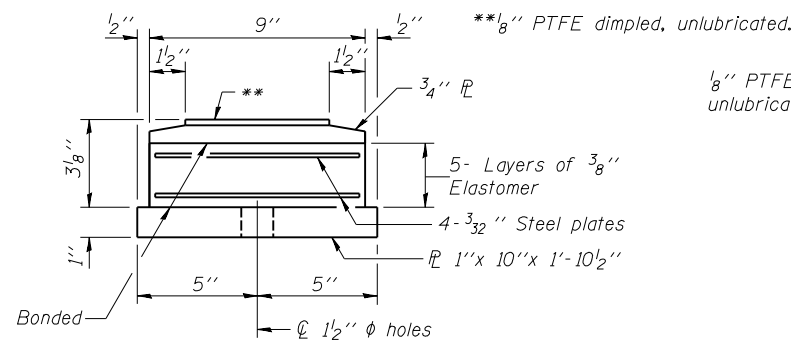
SECTION B-B



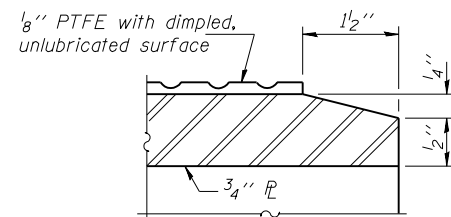
TOP BEARING ASSEMBLY



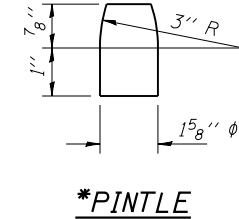
PLAN-PTFE SURFACE



BOTTOM BEARING ASSEMBLY



SECTION THRU PTFE



\*AASHTO M 270 Gr. 50

Notes:

Anchor bolts shall be ASTM F1554 all-thread (or an Engineer-approved alternate material) of the grade(s) and diameter(s) specified. ASTM A307 Grade C anchor bolts may be used in lieu of ASTM F1554 Grade 36 ( $F_y=36$ ksi). The corresponding specified grade of AASHTO M314 anchor bolts may be used in lieu of ASTM F1554.

Anchor bolts at fixed bearings may be either cast in place or installed in holes drilled after the supported member is in place.

Anchor bolts for Type II bearings shall be placed in holes drilled through the bottom bearing plate after members are in place. Side retainers shall be placed after bolts are installed.

Drilled and set anchor bolts shall be installed according to Article 521.06 of the Standard Specifications.

Side retainers and other steel members required for the bearing assembly shall be included in the cost of Elastomeric Bearing Assembly, Type II.

The 1/8" PTFE sheet shall be bonded directly to the top steel plate with a two-component, medium viscosity epoxy resin, conforming to the requirements of the Federal Specification MMM-A-134, Type I. The bond agent shall be applied on the full area of the contact surfaces.

Bonding of 1/8" PTFE sheet during vulcanizing process will be permitted provided the process and method of adjusting assembly height is approved by the Engineer.

The structural steel plates of the bearing assembly shall conform to the requirements of AASHTO M 270, Grade 50.

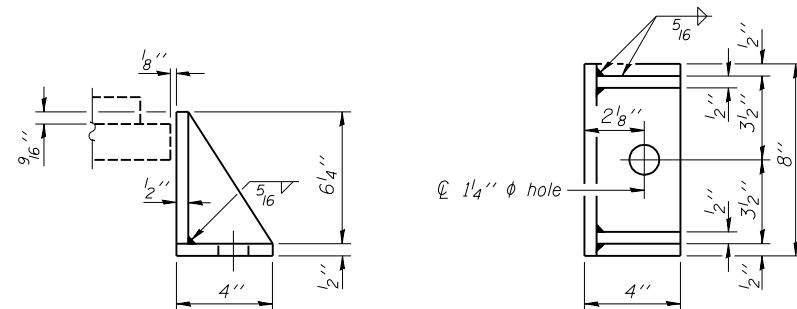
Two 1/8 in. adjusting shims shall be provided for each bearing in addition to all other plates or shims and placed as shown on bearing details.

BILL OF MATERIAL

Item	Unit	Total
Elastomeric Bearing Assembly Type II	Each	6
Anchor Bolts 1" $\phi$	Each	12
Anchor Bolts 1 1/2" $\phi$	Each	12

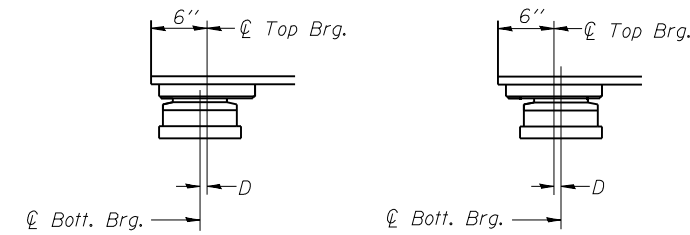
DESIGNED	DPN
CHECKED	SMR
DRAWN	h.t. duong
CHECKED	DPN/SMR

EXAMINED	Jan. 31, 2008	Thomas J. Domagalak ENGINEER OF BRIDGE DESIGN
PASSED		Ralph E. Anderson ENGINEER OF BRIDGES AND STRUCTURES



SIDE RETAINER

Equivalent rolled angle with stiffeners will be allowed in lieu of welded plates.



BELOW 50°F.

(Move bott. brg. away from fixed brg.)

ABOVE 50°F.

(Move bott. brg. toward fixed brg.)

SETTING ANCHOR BOLTS AT EXP. BRG.

$D=1/8$ " per each 100' of expansion for every 15° temp. change from the normal temp. of 50°F.

BEARING DETAILS  
F.A.I. RT. 74 - SEC. (57-22)BR-3  
MCLEAN COUNTY  
STATION 1039+00  
STRUCTURE NO. 057-0125 (E.B.)