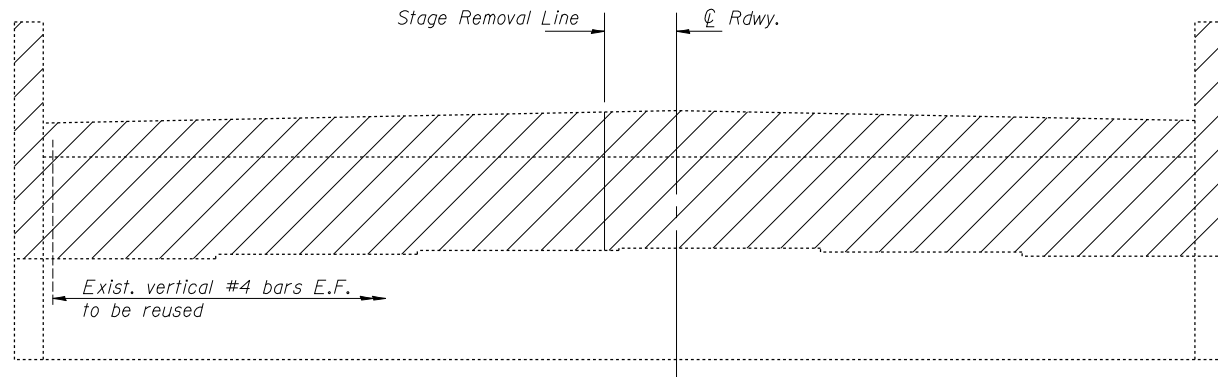
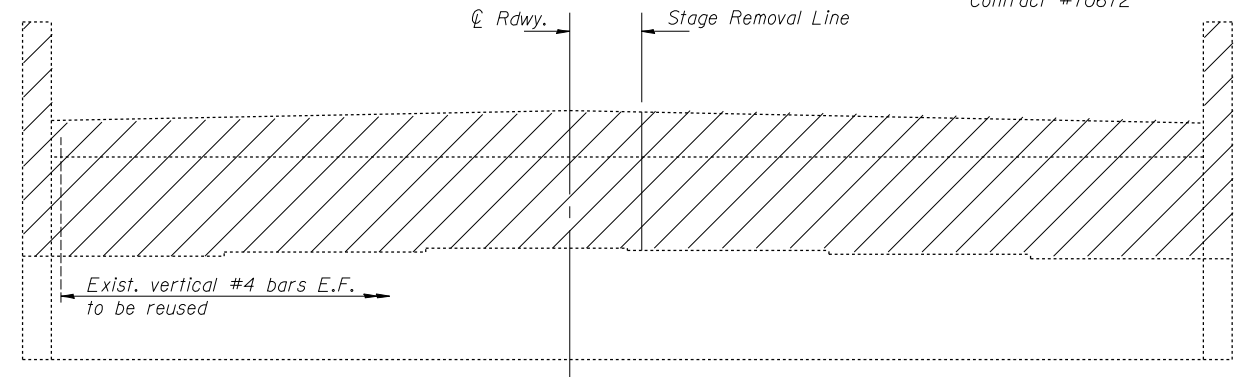


STATE OF ILLINOIS  
DEPARTMENT OF TRANSPORTATION

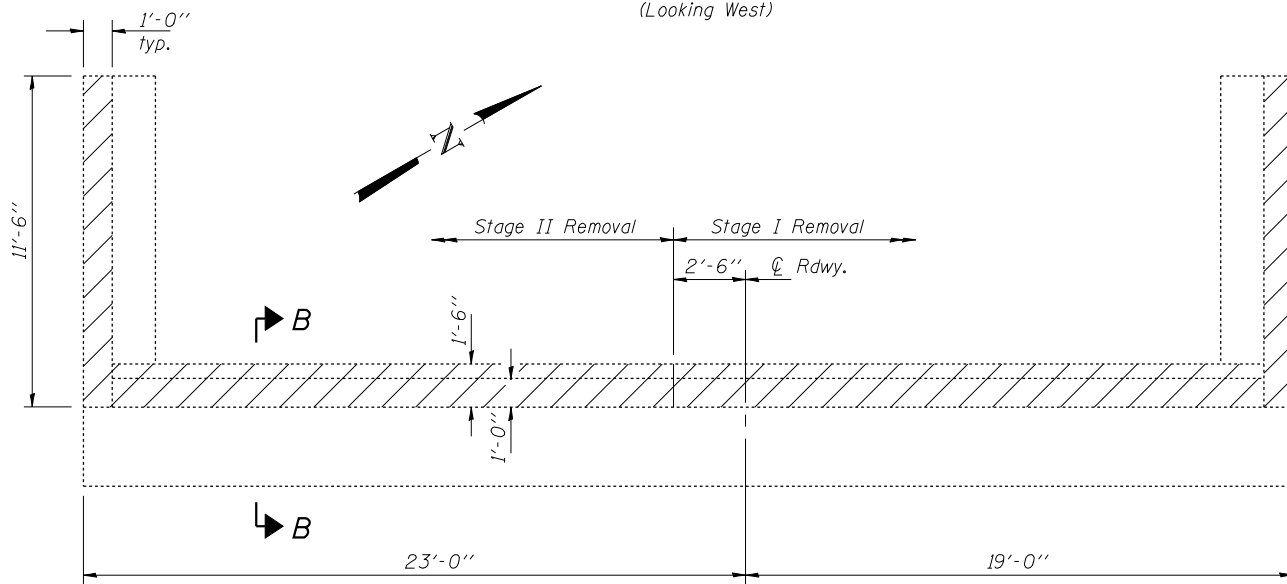
ROUTE NO.	SECTION	COUNTY	TOTAL SHEETS	SHEET NO.	SHEET NO. 18 24 SHEETS
FAI 74	(57-22) BR-3	McLEAN	42	29	
FED. ROAD DIST. NO. 7	ILLINOIS	FED. AID PROJECT	Contract #70672		



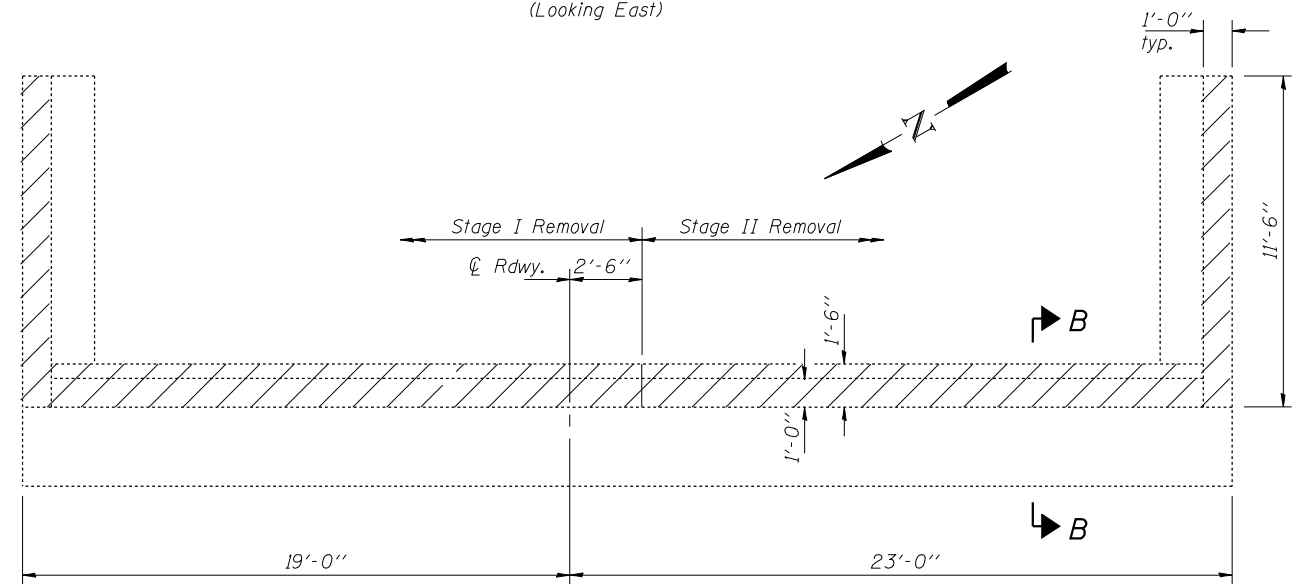
**ELEVATION - WEST ABUT. (E.B.)**  
(Looking West)



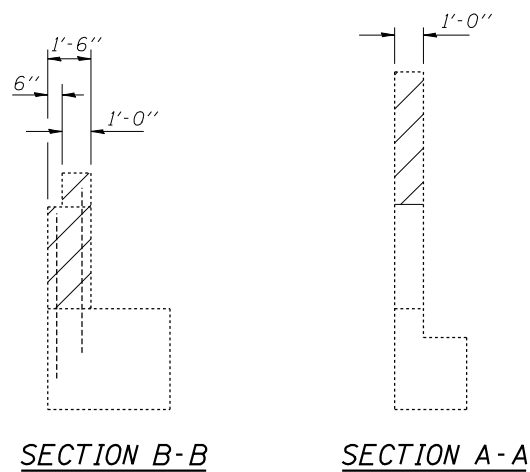
**ELEVATION - EAST ABUT. (E.B.)**  
(Looking East)



**PLAN - WEST ABUT. (E.B.)**

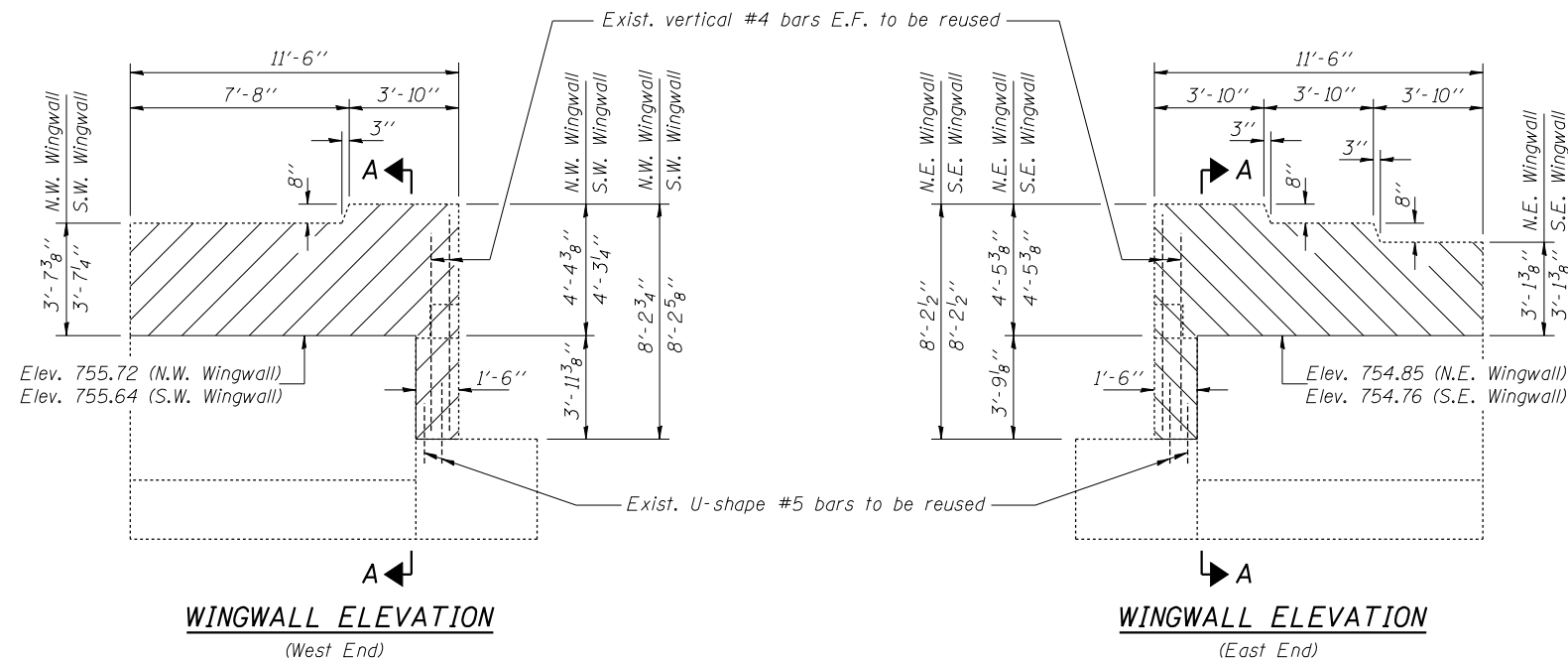


**PLAN - EAST ABUT. (E.B.)**



**SECTION B-B**

**SECTION A-A**



**WINGWALL ELEVATION**  
(West End)

**WINGWALL ELEVATION**  
(East End)

Notes: Hatched area indicates Concrete Removal. Existing reinforcement bars extending into areas of new construction shall be cleaned, straightened and incorporated into the new construction. The existing anchor bolts shall be cut off, ground flush and sealed with epoxy. Cost included with Concrete Removal. Existing reinforcement not extending into new construction shall be cut off flush and covered with 2" layer of cement grout. Cost included with Concrete Removal.

**TWO ABUTMENTS  
BILL OF MATERIAL**

Item	Unit	Total
Concrete Removal	Cu. Yd.	17.00

**CONCRETE REMOVAL - ABUTMENTS**  
F.A.I. RT. 74 - SEC. (57-22)BR-3  
McLEAN COUNTY  
STATION 1039+00  
STRUCTURE NO. 057-0125 (E.B.)

DESIGNED	DPN
CHECKED	SMR
DRAWN	h.t. duong
CHECKED	DPN/SMR

Jan. 31, 2008  
EXAMINED *Thomas J. Domagala*  
ENGINEER OF BRIDGE DESIGN  
PASSED *Ralph E. Anderson*  
ENGINEER OF BRIDGES AND STRUCTURES