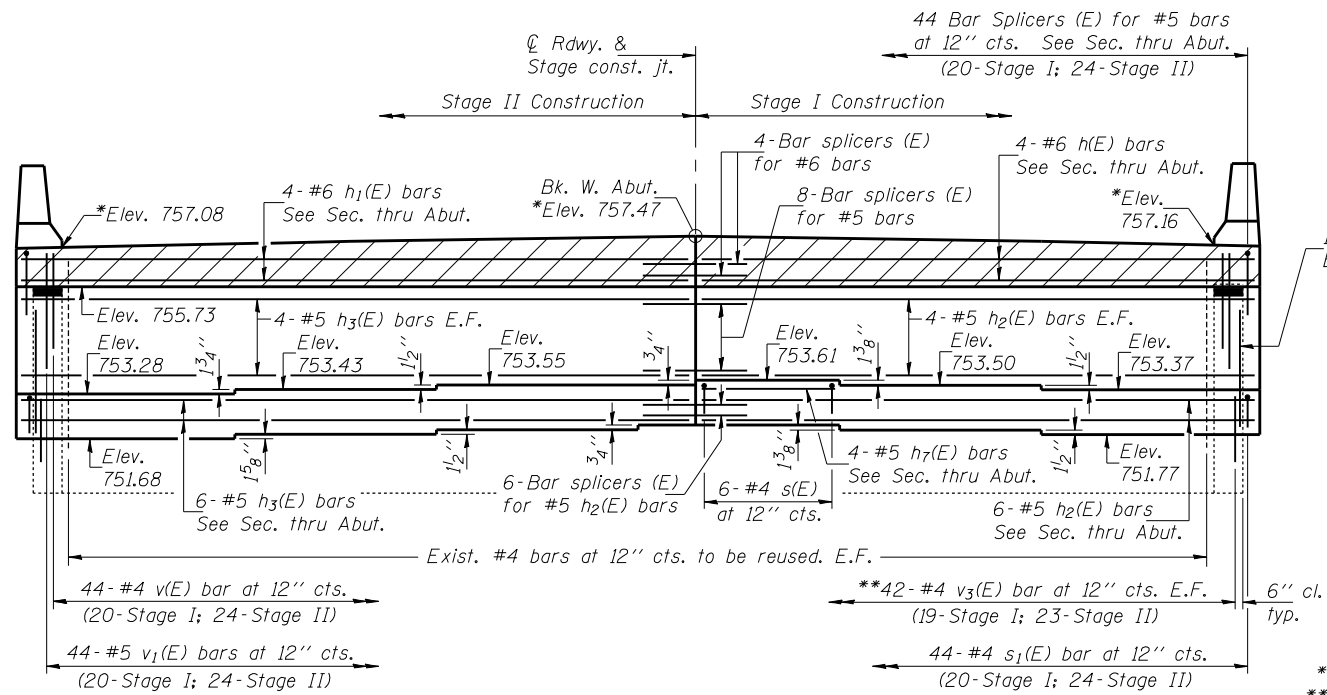


STATE OF ILLINOIS
DEPARTMENT OF TRANSPORTATION

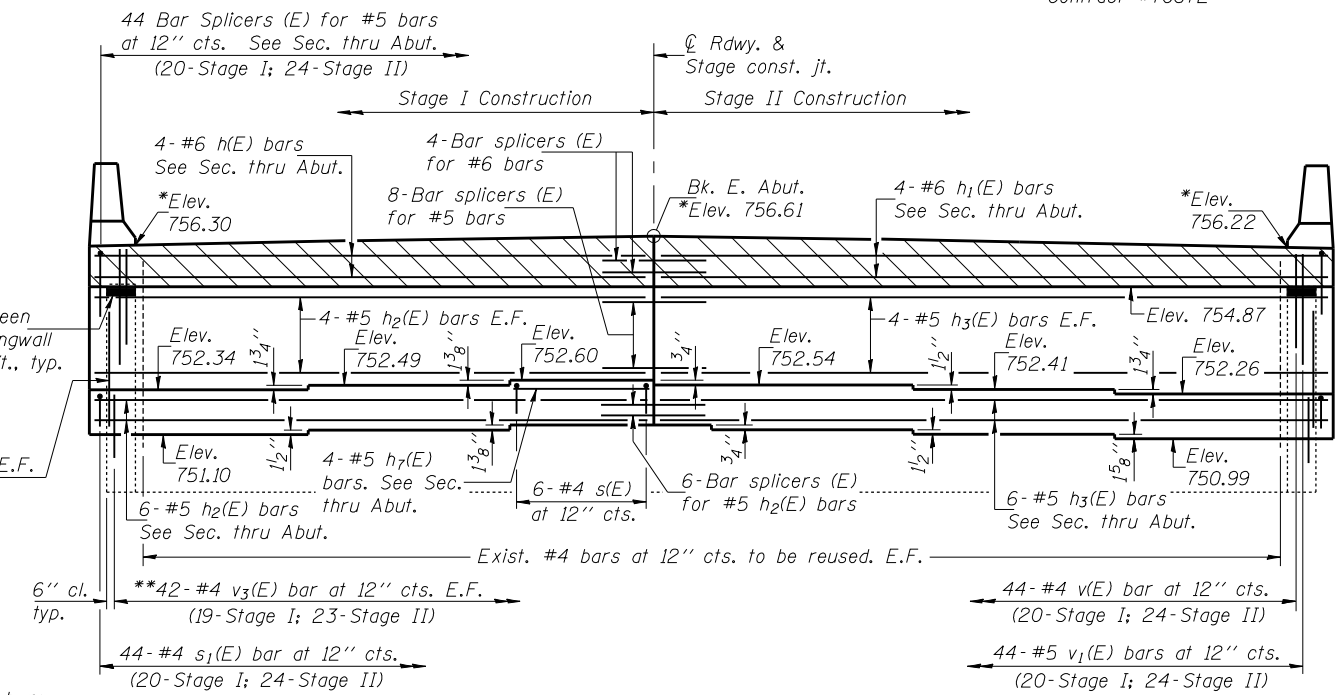
ROUTE NO.	SECTION	COUNTY	TOTAL SHEETS	SHEET NO.	SHEET NO. 20 24 SHEETS
FAI 74	(57-22) BR-3	McLEAN	42	31	
FED. ROAD DIST. NO. 7	ILLINOIS	FED. AID PROJECT-			

Contract #70672

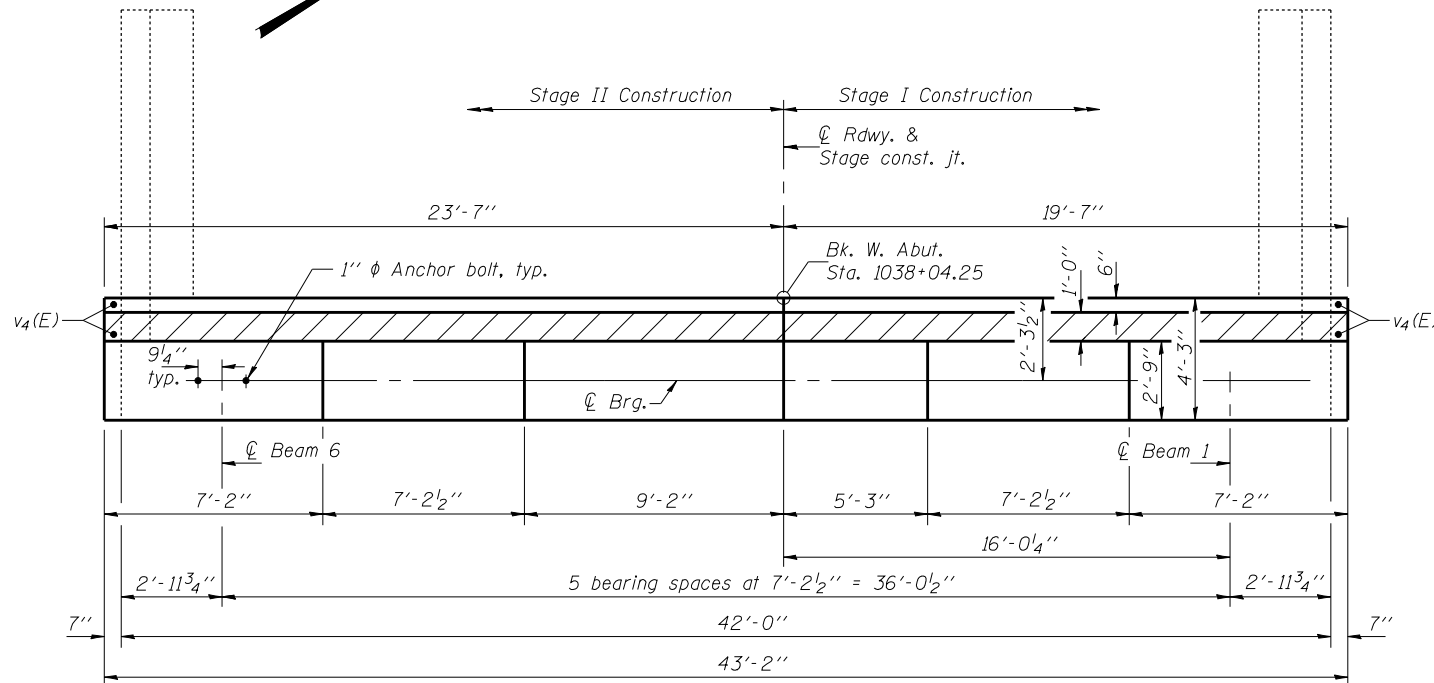


ELEVATION WEST ABUTMENT
(Looking West)

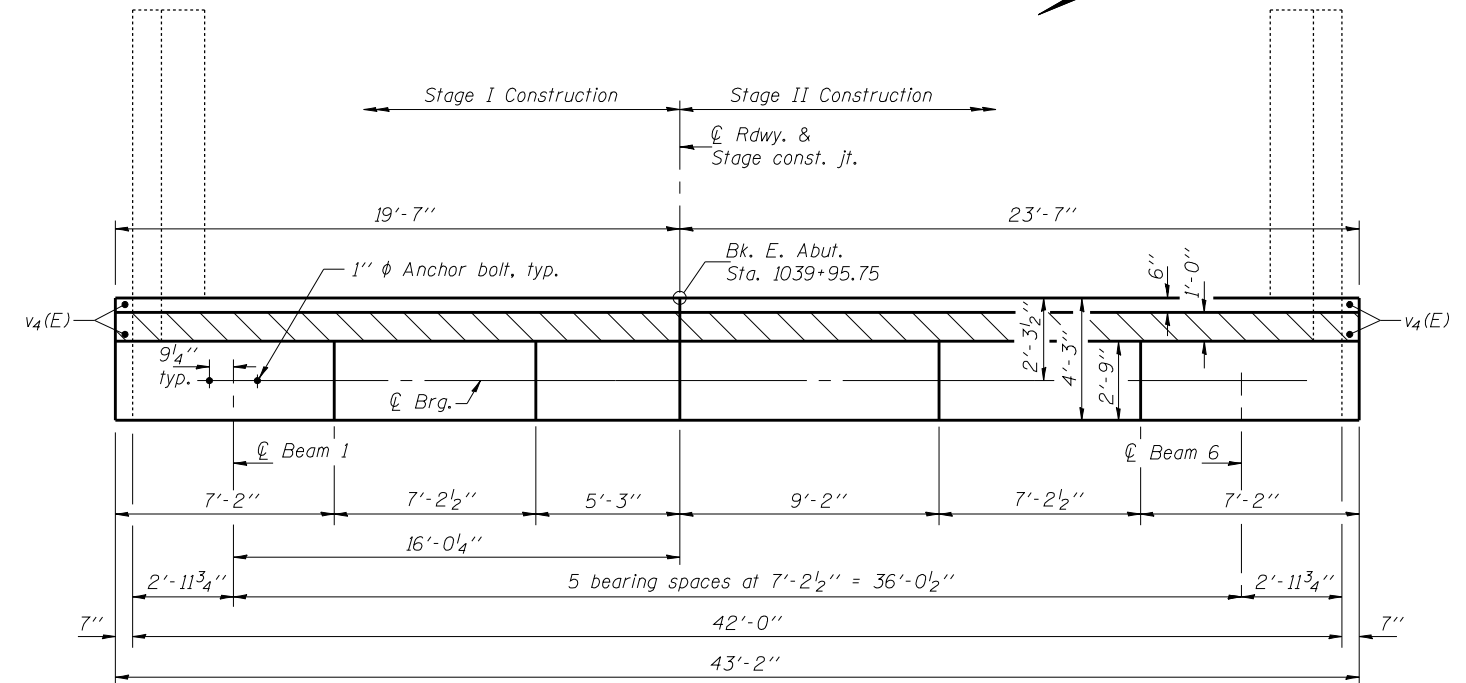
1- #5 v₄(E) bar E.F. Ea. end
1" P/J between remaining wingwall & appr. pav't., typ.
1- #5 v₄(E) bar E.F. Ea. end
*Prior to Grinding
**Epoxy grout #4 v₃(E) bars in 9" min. drilled holes according to Section 584 of the Std. Spec's.



ELEVATION EAST ABUTMENT
(Looking East)



TOP VIEW WEST ABUTMENT



TOP VIEW EAST ABUTMENT

Notes: Existing reinforcement bars extending into areas of new construction shall be cleaned, straightened, and incorporated into the new construction.
Hatched area to be poured after superstructure forms have been removed. Quantity of concrete included with Concrete Superstructure.
Space reinforcement in cap to miss anchor bolts. See sheet 11 of 24 for Bill of Material.
See sheet 24 of 24 for bar splicer details.
See sheet 21 of 24 for Section thru Abutment.

DESIGNED	DPN
CHECKED	SMR
DRAWN	h.f. duong
CHECKED	DPN/SMR

Jan. 31, 2008
EXAMINED *Thomas J. Domagalala*
ENGINEER OF BRIDGE DESIGN
PASSED *Ralph E. Anderson*
ENGINEER OF BRIDGES AND STRUCTURES

ABUTMENTS
F.A.I. RT. 74 - SEC. (57-22)BR-3
McLEAN COUNTY
STATION 1039+00
STRUCTURE NO. 057-0125 (E.B.)