

F.A.I. RTE.	SECTION	COUNTY	TOTAL SHEETS	SHEET NO.
57	D5 PATCHING 2008-5	DOUGLAS	12	1
FED. ROAD DIST. NO.		ILLINOIS	CONTRACT NO. 70679	

STATE OF ILLINOIS  
DEPARTMENT OF TRANSPORTATION  
DIVISION OF HIGHWAYS

**PROPOSED  
HIGHWAY PLANS**

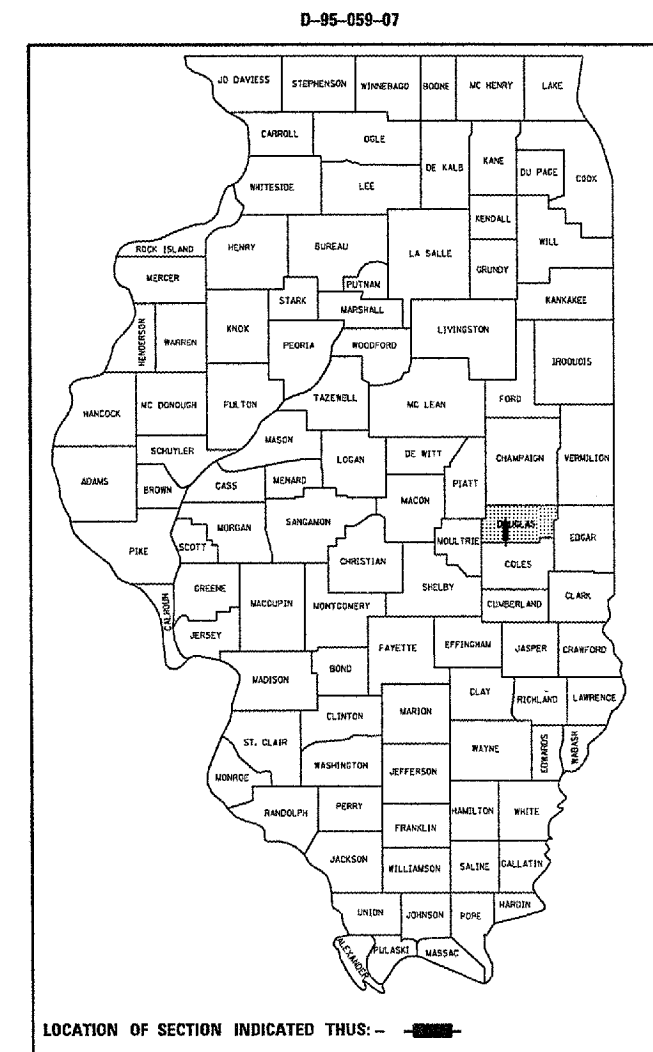
F.A.I. ROUTE 57 (I-57)  
SECTION D5 PATCHING 2008-5  
DOUGLAS COUNTY

C-95-059-07

PATCHING FROM 0.53 MILES NORTH OF COLES COUNTY LINE  
TO 1.8 MILES NORTH OF ARCOLA

FOR INDEX OF SHEETS, SEE SHEET NO. 2  
FOR SUMMARY OF QUANTITIES, SEE SHEET NO. 5

CURRENT ADT = 19,300 (2005) I-57 NORTH OF IL 133  
CURRENT ADT = 18,300 (2005) I-57 SOUTH OF IL 133

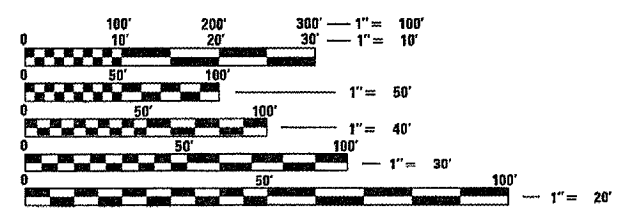
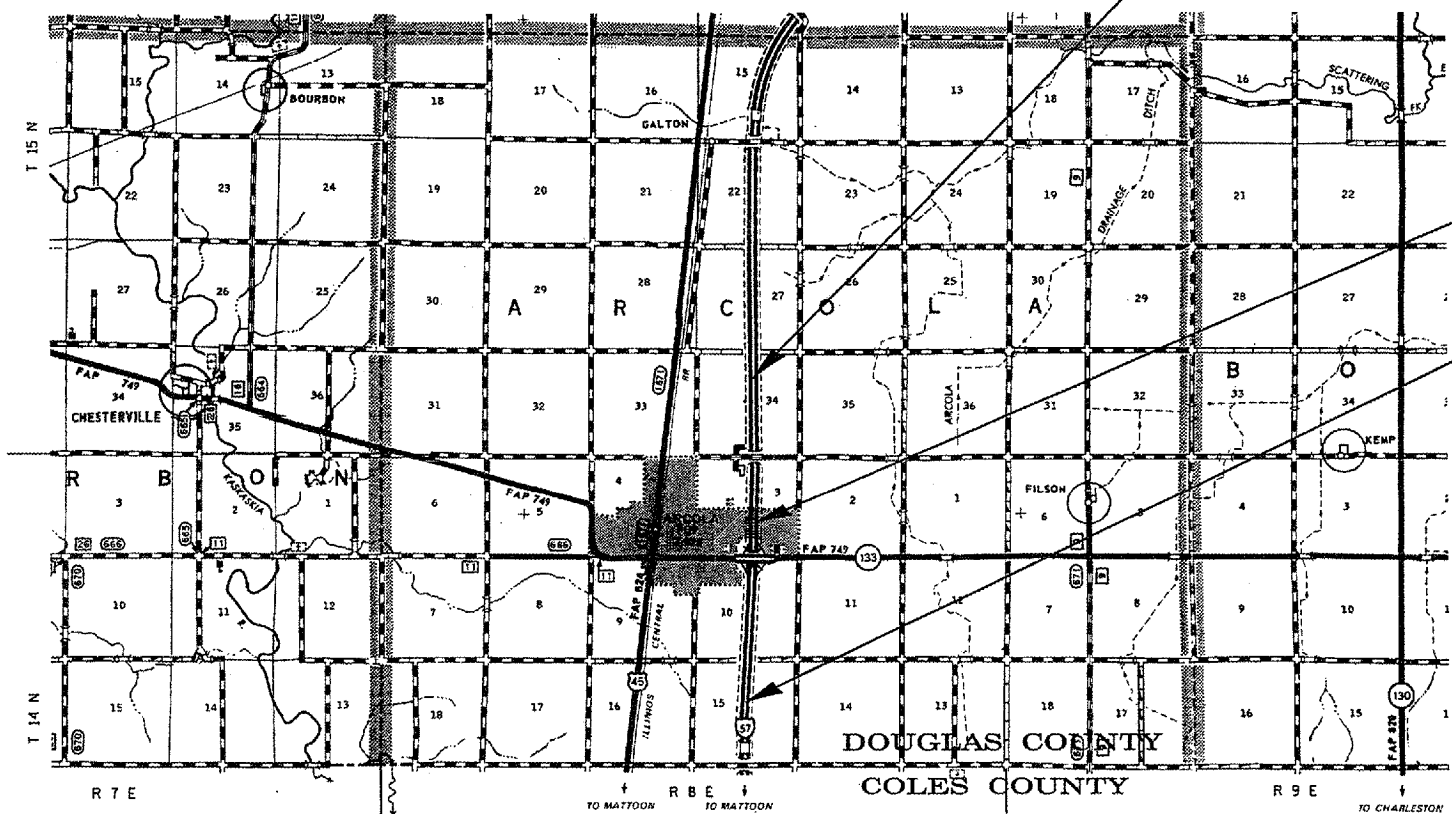


LOCATION OF SECTION INDICATED THUS: - [shaded box] -

STATION EQUATION  
STA 117+23.47 (AH) =  
STA 1510+00.00 (BK)

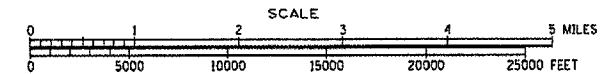
PROJECT BEGINS  
STATION 1414+89.40

PROJECT ENDS  
STATION 195+04.00



FULL SIZE PLANS HAVE BEEN PREPARED USING STANDARD ENGINEERING SCALES. REDUCED SIZED PLANS WILL NOT CONFORM TO STANDARD SCALES. IN MAKING MEASUREMENTS ON REDUCED PLANS, THE ABOVE SCALES MAY BE USED.

J.U.L.I.E.  
JOINT UTILITY LOCATION INFORMATION FOR EXCAVATION  
1-800-892-0123  
OR 811



TOTAL LENGTH OF SECTION & PROJECT = 17,291.13 FEET = 3.275 MILES  
NET LENGTH OF SECTION & PROJECT = 17,143.13 FEET = 3.247 MILES

STATE OF ILLINOIS  
DEPARTMENT OF TRANSPORTATION  
DIVISION OF HIGHWAYS  
SUBMITTED 12/12 20 07  
Joseph G. Crowe  
DEPUTY DIRECTOR OF HIGHWAYS, REGION ENGINEER  
February 1, 20 08  
Eric E. Harms  
ENGINEER OF DESIGN AND ENVIRONMENT  
February 1, 20 08  
Christina M. Reed  
DIRECTOR OF HIGHWAYS, CHIEF ENGINEER

**PRINTED BY THE AUTHORITY  
OF THE STATE OF ILLINOIS**

CONTRACT NO. 70679

(217)465-4181

PROJECT ENGINEER: KENSIL GARNETT

DESIGNER: TODD BLACK