

F.A.I. RTE.	SECTION	COUNTY	TOTAL SHEETS	SHEET NO.
57	D5 PATCHING 2008-5	DOUGLAS	12	1
FED. ROAD DIST. NO.		ILLINOIS	CONTRACT NO. 70679	

STATE OF ILLINOIS
DEPARTMENT OF TRANSPORTATION
DIVISION OF HIGHWAYS

**PROPOSED
HIGHWAY PLANS**

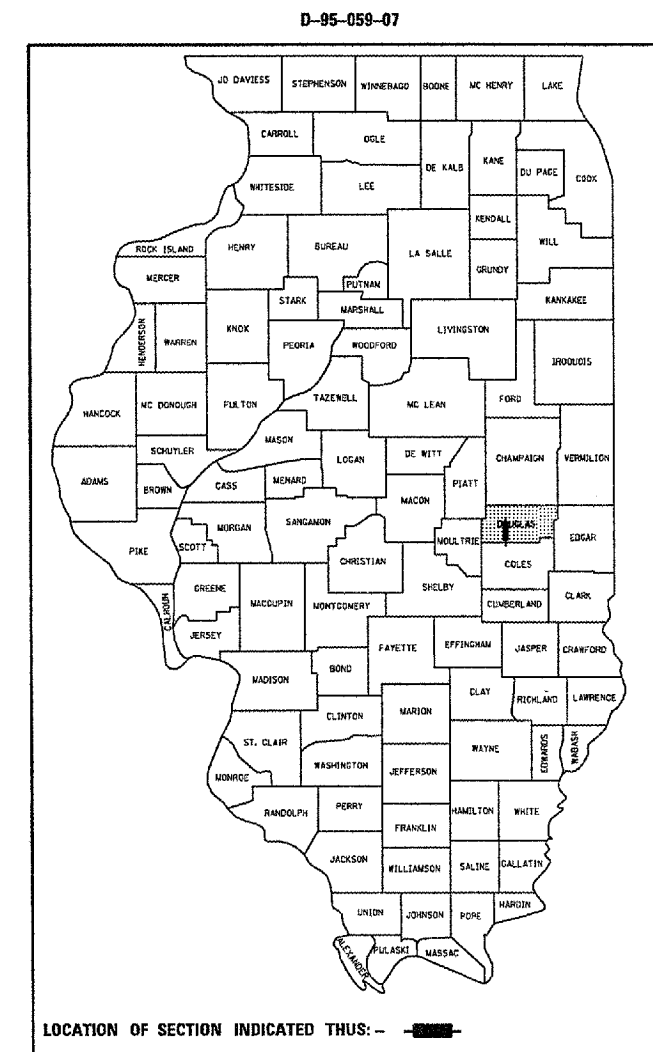
F.A.I. ROUTE 57 (I-57)
SECTION D5 PATCHING 2008-5
DOUGLAS COUNTY

C-95-059-07

PATCHING FROM 0.53 MILES NORTH OF COLES COUNTY LINE
TO 1.8 MILES NORTH OF ARCOLA

FOR INDEX OF SHEETS, SEE SHEET NO. 2
FOR SUMMARY OF QUANTITIES, SEE SHEET NO. 5

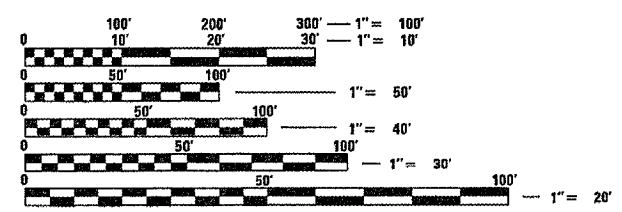
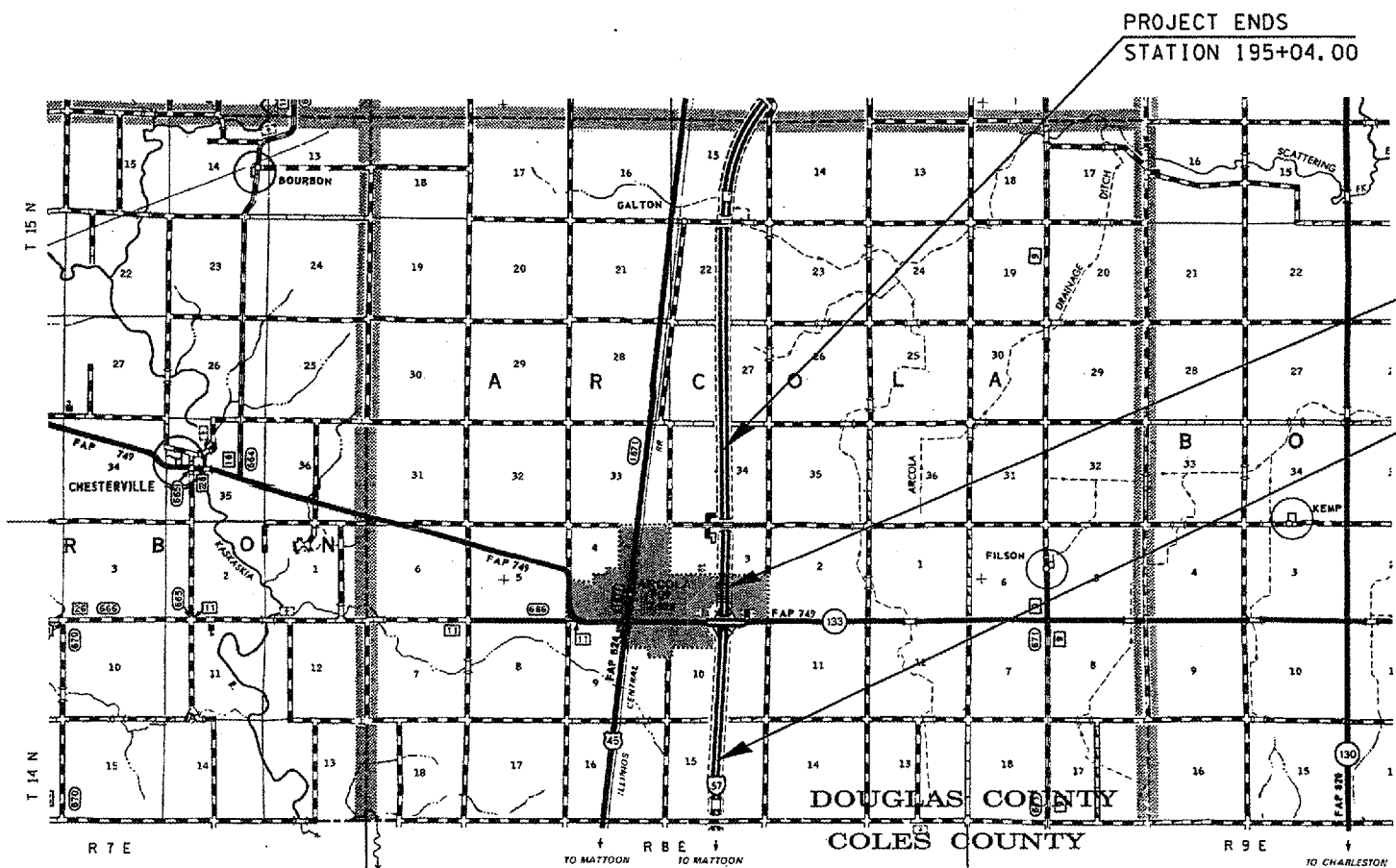
CURRENT ADT = 19,300 (2005) I-57 NORTH OF IL 133
CURRENT ADT = 18,300 (2005) I-57 SOUTH OF IL 133



LOCATION OF SECTION INDICATED THUS: - [shaded box] -

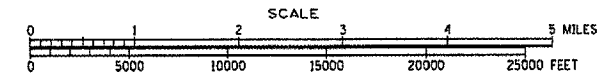
STATION EQUATION
STA 117+23.47 (AH) =
STA 1510+00.00 (BK)

PROJECT BEGINS
STATION 1414+89.40



FULL SIZE PLANS HAVE BEEN PREPARED USING STANDARD ENGINEERING SCALES. REDUCED SIZED PLANS WILL NOT CONFORM TO STANDARD SCALES. IN MAKING MEASUREMENTS ON REDUCED PLANS, THE ABOVE SCALES MAY BE USED.

J.U.L.I.E.
JOINT UTILITY LOCATION INFORMATION FOR EXCAVATION
1-800-892-0123
OR 811



TOTAL LENGTH OF SECTION & PROJECT = 17,291.13 FEET = 3.275 MILES
NET LENGTH OF SECTION & PROJECT = 17,143.13 FEET = 3.247 MILES

STATE OF ILLINOIS
DEPARTMENT OF TRANSPORTATION
DIVISION OF HIGHWAYS
SUBMITTED 12/12 20 07
[Signature] DEPUTY DIRECTOR OF HIGHWAYS, REGION ENGINEER
February 1, 20 08
[Signature] ENGINEER OF DESIGN AND ENVIRONMENT
February 1, 20 08
[Signature] DIRECTOR OF HIGHWAYS, CHIEF ENGINEER

PRINTED BY THE AUTHORITY
OF THE STATE OF ILLINOIS

CONTRACT NO. 70679

(217)465-4181

PROJECT ENGINEER: KENSIL GARNETT

DESIGNER: TODD BLACK

INDEX OF SHEETS

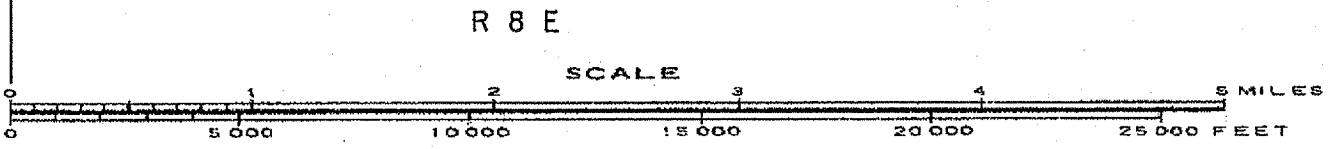
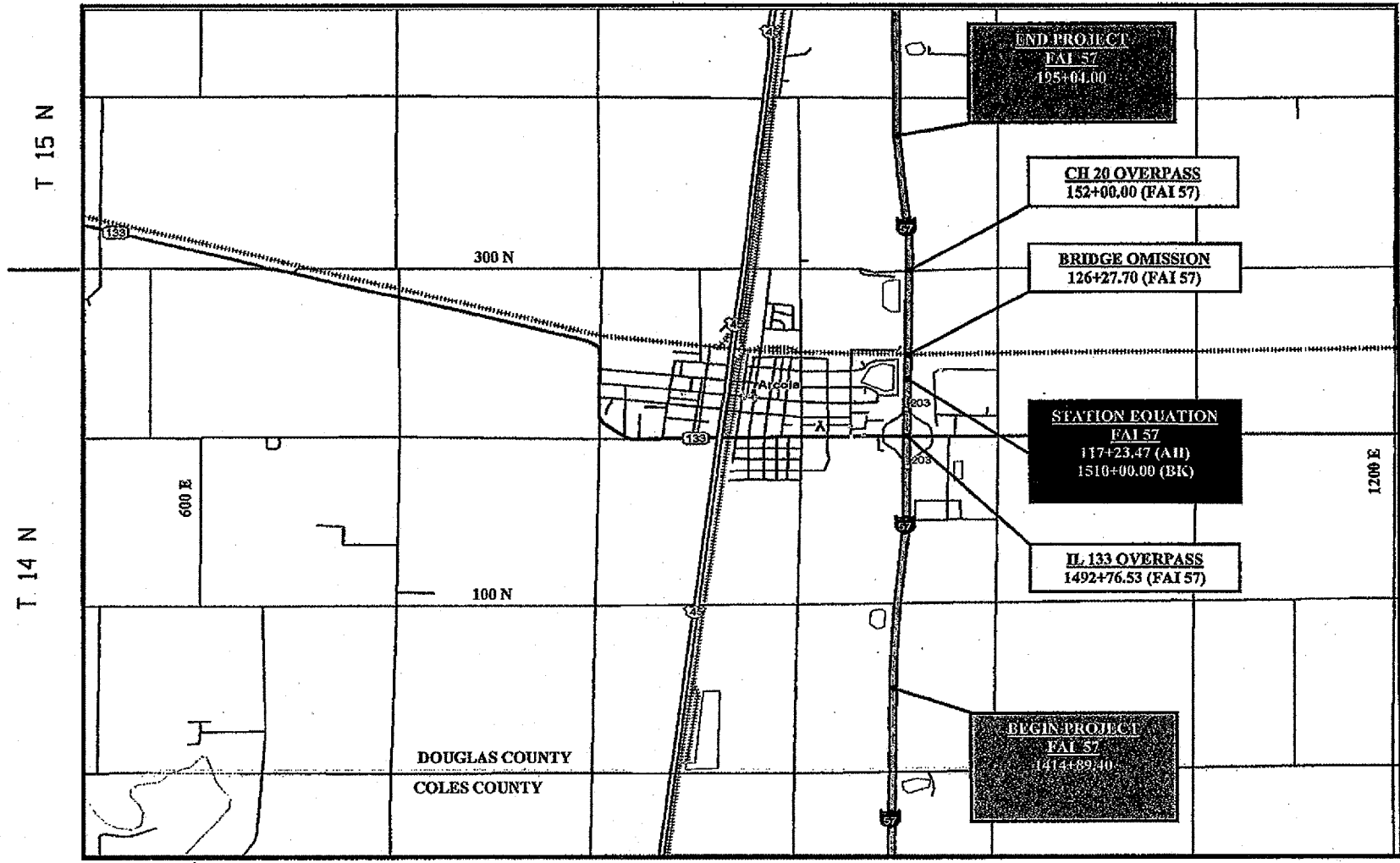
<u>SHEET NO.</u>	<u>DESCRIPTION</u>
1	COVER SHEET
2	INDEX OF SHEETS
2	LIST OF STANDARDS
3	LOCATION MAP
4	GENERAL NOTES
5	SUMMARY OF QUANTITIES
6-10	SCHEDULES OF QUANTITIES
11	EXISTING TYPICAL SECTIONS
12	DETAIL OF PAVEMENT MARKING (INTERSTATE & MULTI-LANE APPLICATIONS)

HIGHWAY STANDARDS

<u>STANDARD NUMBER</u>	<u>NAME OF STANDARD</u>
000001-05	STANDARD SYMBOLS, ABBREVIATIONS AND PATTERNS
001001-01	AREAS OF REINFORCEMENT BARS
001006	DECIMAL OF AN INCH AND OF A FOOT
420001-07	PAVEMENT JOINTS
421201-06	24' (7.2m) CRC PAVEMENT (WITH LUG SYSTEM)
421001-02	BAR REINFORCEMENT FOR CRC PAVEMENT
442001-04	CLASS A PATCHES
701101-01	OFF-ROAD OPERATIONS, MULTILANE, 15' TO 24" FROM PAVEMENT EDGE
701400-02	APPROACH TO LANE CLOSURE, FREEWAY/EXPRESSWAY
701401-04	LANE CLOSURE, FREEWAY/EXPRESSWAY
701411-04	LANE CLOSURE, MULTILANE, AT ENTRANCE OR EXIT RAMP, FOR SPEEDS ≥ 45 MPH
701426-02	LANE CLOSURE, MULTILANE, INTERMITTENT OR MOVING OPERATION, FOR SPEEDS ≥ 45 MPH
701901	TRAFFIC CONTROL DEVICES
780001-01	TYPICAL PAVEMENT MARKINGS

FILE NAME =	USER NAME = collierbw	DESIGNED - RTB	REVISED -	STATE OF ILLINOIS DEPARTMENT OF TRANSPORTATION	INDEX OF SHEETS AND HIGHWAY STANDARDS	F.A.I. RTE.	SECTION	COUNTY	TOTAL SHEETS	SHEET NO.	
c:\projects\4585907\68178079\sheets.dgn	DRAWN - JRP 10-30-07	CHECKED -	REVISED -			57	DS PATCHING 2008-5	DOUGLAS	12	2	
PLOT SCALE = 1/8" = 1' / IN.	DATE -	REVISED -	REVISED -			CONTRACT NO. 70679					
PLOT DATE = 12/11/2007	DATE -	REVISED -	REVISED -			SCALE: NA	SHEET NO. OF SHEETS	STA.	TO STA.	FED. ROAD DIST. NO. ILLINOIS FED. AID PROJECT	

LOCATION MAP



FILE NAME = c:\projects\4585987\481\7867\sheets.dgn	USER NAME = colliebw	DESIGNED - RTB	REVISED -	STATE OF ILLINOIS DEPARTMENT OF TRANSPORTATION	LOCATION MAP				F.A.I. RTE. 57	SECTION 05 PATCHING 2008-5	COUNTY DOUGLAS	TOTAL SHEETS 12	SHEET NO. 3
		DRAWN - JRP 10-30-07	REVISED -						CONTRACT NO. 70679				
		CHECKED -	REVISED -										
		DATE -	REVISED -										
PLOT SCALE = 100.0000' / IN.		PLOT DATE = 11/28/2007		SCALE: NA				SHEET NO. OF SHEETS		STA. TO STA.		FED. ROAD DIST. NO. ILLINOIS FED. AID PROJECT	

GENERAL NOTES

G. N. -100

ENGLISH UNITS OF MEASUREMENT SHALL GOVERN OVER AND SUPERSEDE ANY METRIC UNITS SHOWN IN THIS CONTRACT. WHERE INCLUDED, METRIC UNITS ARE FOR INFORMATION ONLY.

G. N. -442B -- PATCHING SCHEDULES

THE PATCHING SCHEDULES INCLUDED IN THE PLANS REPRESENT THE BEST INFORMATION AVAILABLE AT THE TIME OF COMPLETION OF THE PLANS FOR LETTING. VARIATIONS IN LOCATION AND SIZES OF BOTH FULL-DEPTH AND PARTIAL-DEPTH PATCHES MAY OCCUR.

G. N. -780 SPECIAL

PAINT PAVEMENT MARKINGS SHALL BE APPLIED UPON COMPLETION OF THE PATCH WORK. PAINT PAVEMENT MARKINGS SHALL COINCIDE WITH THE EXISTING PAVEMENT MARKINGS. PAINT PAVEMENT MARKINGS SHALL BE LIMITED TO ONLY LENGTH SEGMENTS ASSOCIATED WITH INDIVIDUAL PATCH LOCATIONS AND SHALL NOT BE APPLIED CONTINUOUSLY THROUGH THE PROJECT BETWEEN PATCH LOCATIONS.

ESTIMATED QUANTITIES:

160.0 FOOT CENTERLINE WHITE SKIP DASH - LINE 4"
630.0 FOOT EDGE OF PAVEMENT WHITE SOLID - LINE 4"

NO COMMITMENTS

ADDITIONAL PATCHING NOTES:

PATCH DIMENSIONS SHALL BE IN ACCORDANCE WITH BDE PAVEMENT REHABILITATION METHODS CHAPTER 53 (4.01):

THE MINIMUM CLASS A PATCH DIMENSIONS WILL BE A LENGTH OF 4.5 FT AND A WIDTH THAT INCLUDES HALF THE WIDTH OF THE TRAVEL LANE.

FILE NAME * c:\projects\ad585987 (6)1\70679\sheet.dgn	USER NAME * collarbw	DESIGNED - RTB	REVISED -	STATE OF ILLINOIS DEPARTMENT OF TRANSPORTATION	GENERAL NOTES	F.A.I. RTE.	SECTION	COUNTY	TOTAL SHEETS	SHEET NO.
		DRAWN - JRP 10-30-07	REVISED -			57	D5 PATCHING 2008-5	DOUGLAS	12	4
		CHECKED -	REVISED -			CONTRACT NO, 70679				
		PLOT DATE * 12/6/2007	DATE -			FED. ROAD DIST. NO. ILLINOIS FED. AID PROJECT				
				SCALE: NA		SHEET NO. OF SHEETS		STA. TO STA.		

SUMMARY OF QUANTITIES

LOCATION OF WORK:

FAI - 57
Douglas County

Sta. 1414+89.40 to Sta. 195+04.00

CONSTRUCTION TYPE CODE:

Rural - Multilane
100% State
J000 - 2A
**TOTAL
QUANTITY**

CODE NO	ITEM	UNIT	TOTAL QUANTITY
44200549	CLASS A PATCHES, TYPE I, 10 INCH	SQ YD	160.0
44200553	CLASS A PATCHES, TYPE II, 10 INCH	SQ YD	155.0
44200557	CLASS A PATCHES, TYPE III, 10 INCH	SQ YD	60.0
44200559	CLASS A PATCHES, TYPE IV, 10 INCH	SQ YD	110.0
44213000	PATCHING REINFORCEMENT	SQ YD	480.0
44213200	SAW CUTS	FOOT	2,890.0
67100100	MOBILIZATION	L SUM	1.0
70100420	TRAFFIC CONTROL AND PROTECTION, STANDARD 701411	EACH	4.0
70100800	TRAFFIC CONTROL AND PROTECTION, STANDARD 701401	L SUM	1.0
70103815	TRAFFIC CONTROL SURVEILLANCE	CAL DA	10.0
* 78001110	PAINT PAVEMENT MARKING-LINE 4"	FOOT	790.0
X7015005	CHANGEABLE MESSAGE SIGN	CAL DA	28.0
Z0075300	TIE BARS	EACH	130.0

* SPECIALTY ITEM

FILE NAME * c:\proj\jcts\d589707 lv8\78679sheets.dgn	USER NAME * collierbw	DESIGNED -	REVISED -	STATE OF ILLINOIS DEPARTMENT OF TRANSPORTATION	SUMMARY OF QUANTITIES			F.A.I. RTE.	SECTION	COUNTY	TOTAL SHEETS	SHEET NO.
		DRAWN -	REVISED -					57	DS PATCHING 2008-5	DOUGLAS	12	5
		PLOT SCALE * 1/8" = 1' IN.	CHECKED -		REVISED -	CONTRACT NO. 70679			ILLINOIS FED. AID PROJECT			
		PLOT DATE * 12/15/2007	DATE -		REVISED -	SCALE:	SHEET NO.	OF	SHEETS	STA.	TO STA.	

SCHEDULE OF QUANTITIES

TABULATION OF CLASS A PAVEMENT PATCH, 10 INCH (SOUTHBOUND)

STATION	LANE	LENGTH (FT)	WIDTH (FT)	TYPE 1	TYPE 2	TYPE 3	TYPE 4	SAWCUTS	TIE BARS	PATCHING REINFORCEMENT
				44200549 (SQ.YD.)	44200553 (SQ.YD.)	44200557 (SQ.YD.)	44200559 (SQ.YD.)	44213200 (FT)	Z0075300 (EACH)	44213000 (SQ.YD.)
1479+98.53	SBDL	6.0	6.0	4.0				36.0		4.0
1477+15.53	SBDL	6.0	12.0		8.0			60.0		8.0
1476+97.53	SBDL	6.0	12.0		8.0			60.0		8.0
1476+64.53	SBDL	6.0	12.0		8.0			60.0		8.0
1447+41.53	SBDL	6.0	6.0	4.0				36.0		4.0
1447+18.53	SBDL	6.0	6.0	4.0				36.0		4.0
1437+86.53	SBDL	20.0	6.0		13.3			64.0	10.0	13.3
1436+16.53	SBDL	12.0	6.0		8.0			48.0		8.0
1435+81.53	SBDL	6.0	6.0	4.0				36.0		4.0
1433+68.53	SBDL	6.0	6.0	4.0				36.0		4.0
1430+11.53	SBDL	6.0	6.0	4.0				36.0		4.0
1427+83.53	SBDL	15.0	12.0			20.0		78.0		20.0
1427+39.53	SBDL	10.0	6.0		6.7			44.0		6.7
1426+43.53	SBDL	6.0	6.0	4.0				36.0		4.0
1417+44.53	SBDL	6.0	6.0	4.0				36.0		4.0
CLASS A PATCH PAGE SUBTOTALS				32.0	52.0	20.0	0.0	702.0	10.0	104.0

SCHEDULE OF QUANTITIES

TABULATION OF CLASS A PAVEMENT PATCH, 10 INCH (SOUTHBOUND)

STATION	LANE	LENGTH (FT)	WIDTH (FT)	TYPE 1	TYPE 2	TYPE 3	TYPE 4	SAWCUTS (FT)	TIE BARS Z0075300 (EACH)	PATCHING REINFORCEMENT 44213000 (SQ.YD.)
				44200549 (SQ.YD.)	44200553 (SQ.YD.)	44200557 (SQ.YD.)	44200559 (SQ.YD.)			
137+30.00	SBDL	6.0	12.0		8.0			60.0		8.0
135+03.00	SBDL	6.0	6.0	4.0				36.0		4.0
134+81.00	SBDL	10.0	6.0		6.7			44.0		6.7
130+45.00	SBDL	10.0	6.0		6.7			44.0		6.7
129+66.00	SBDL	6.0	6.0	4.0				36.0		4.0
STA EQN										
1509+75.53	SBDL	6.0	6.0	4.0				36.0		4.0
1505+16.53	SBDL	30.0	6.0			20.0		84.0	15.0	20.0
1504+75.53	SBDL	20.0	6.0		13.3			64.0	10.0	13.3
1503+88.53	SBDL	6.0	6.0	4.0				36.0		4.0
1503+20.53	SBDL	10.0	6.0		6.7			44.0		6.7
1496+14.53	SBDL	6.0	6.0	4.0				36.0		4.0
1494+13.53	SBDL	30.0	6.0			20.0		84.0	15.0	20.0
1489+09.53	SBDL	8.0	12.0		10.7			64.0		10.7
1488+08.53	SBDL	6.0	6.0	4.0				36.0		4.0
CLASS A PATCH PAGE SUBTOTALS				24.0	52.0	40.0	0.0	704.0	40.0	116.1

SCHEDULE OF QUANTITIES

TABULATION OF CLASS A PAVEMENT PATCH, 10 INCH (SOUTHBOUND)

STATION	LANE	LENGTH (FT)	WIDTH (FT)	TYPE 1	TYPE 2	TYPE 3	TYPE 4	SAWCUTS	TIE BARS	PATCHING REINFORCEMENT
				44200549 (SQ.YD.)	44200553 (SQ.YD.)	44200557 (SQ.YD.)	44200559 (SQ.YD.)	44213200 (FT)	Z0075300 (EACH)	44213000 (SQ.YD.)
174+68.00	SBDL	6.0	6.0	4.0				36.0		4.0
173+52.00	SBDL	80.0	6.0				53.3	184.0	40.0	53.3
171+24.00	SBDL	6.0	6.0	4.0				36.0		4.0
169+66.00	SBDL	6.0	6.0	4.0				36.0		4.0
167+61.00	SBDL	10.0	6.0		6.7			44.0		6.7
165+75.00	SBDL	6.0	6.0	4.0				36.0		4.0
165+64.00	SBDL	6.0	6.0	4.0				36.0		4.0
165+21.00	SBDL	6.0	6.0	4.0				36.0		4.0
161+83.00	SBDL	6.0	6.0	4.0				36.0		4.0
153+94.00	SBDL	40.0	12.0				53.3	128.0	20.0	53.3
148+96.00	SBDL	6.0	6.0	4.0				36.0		4.0
148+25.00	SBDL	6.0	6.0	4.0				36.0		4.0
142+05.00	SBDL	6.0	6.0	4.0				36.0		4.0
137+44.00	SBDL	6.0	6.0	4.0				36.0		4.0
CLASS A PATCH PAGE SUBTOTALS				44.0	6.7	0.0	106.7	752.0	60.0	157.3

SCHEDULE OF QUANTITIES

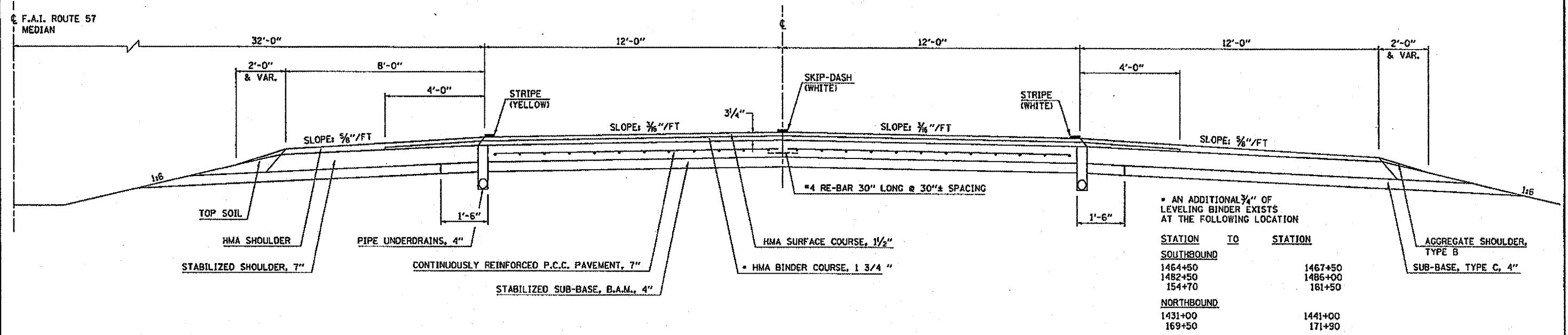
TABULATION OF CLASS A PAVEMENT PATCH, 10 INCH (NORTHBOUND)

STATION	LANE	LENGTH (FT)	WIDTH (FT)	TYPE 1	TYPE 2	TYPE 3	TYPE 4	SAWCUTS	TIE BARS	PATCHING REINFORCEMENT
				44200549 (SQ.YD.)	44200553 (SQ.YD.)	44200557 (SQ.YD.)	44200559 (SQ.YD.)	44213200 (FT)	Z0075300 (EACH)	44213000 (SQ.YD.)
171+32.00	NBDL	6.0	6.0	4.0				36.0		4.0
171+17.00	NBDL	6.0	6.0	4.0				36.0		4.0
171+00.00	NBDL	6.0	6.0	4.0				36.0		4.0
169+94.00	NBDL	6.0	6.0	4.0				36.0		4.0
169+30.00	NBDL	6.0	6.0	4.0				36.0		4.0
168+94.00	NBDL	20.0	6.0		13.3			64.0	10.0	13.3
164+69.00	NBDL	6.0	6.0	4.0				36.0		4.0
162+91.00	NBDL	6.0	6.0	4.0				36.0		4.0
158+84.00	NBDL	6.0	6.0	4.0				36.0		4.0
154+76.00	NBDL	6.0	6.0	4.0				36.0		4.0
149+84.00	NBDL	8.0	6.0		5.3			40.0		5.3
146+68.00	NBDL	8.0	6.0		5.3			40.0		5.3
144+84.00	NBDL	8.0	6.0		5.3			40.0		5.3
144+28.00	NBDL	12.0	6.0		8.0			48.0		8.0
131+88.00	NBDL	8.0	6.0		5.3			40.0		5.3
CLASS A PATCH PAGE SUBTOTALS				36.0	42.5	0.0	0.0	596.0	10.0	78.5

EXISTING TYPICAL SECTION

F. A. I. - 57

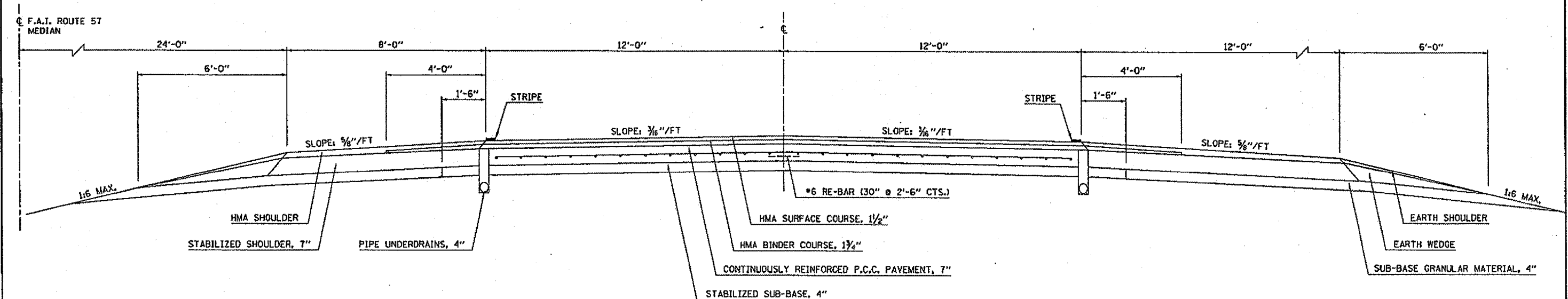
STATION TO STATION
 1414+89.40 TO 1510+00.00 BK (STA EO)
 117+23.47 AH (STA EO) 175+13.87



EXISTING TYPICAL SECTION

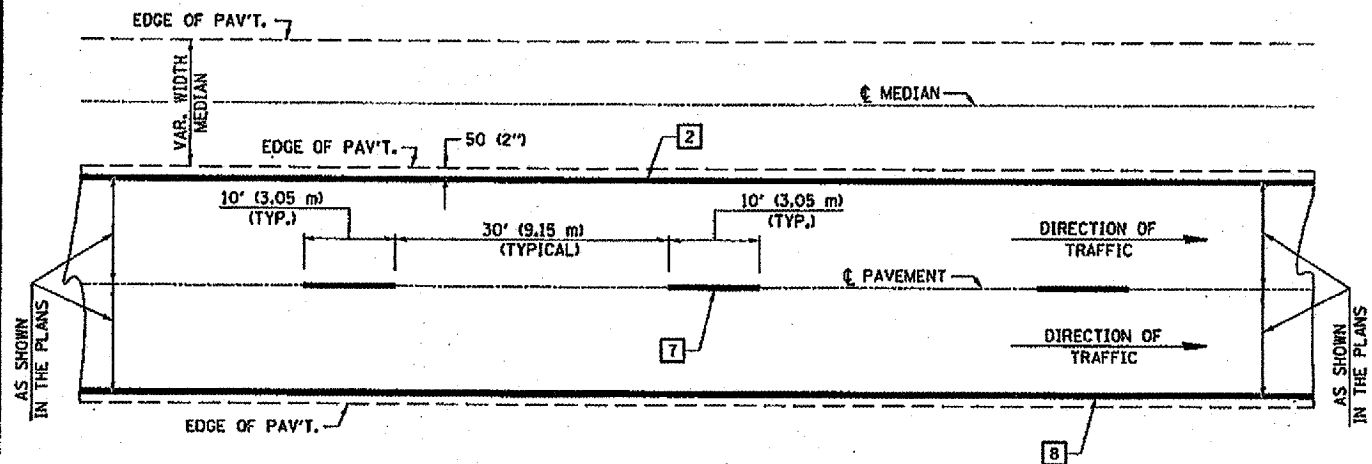
F. A. I. - 57

STATION TO STATION
 175+13.87 TO 195+04.00



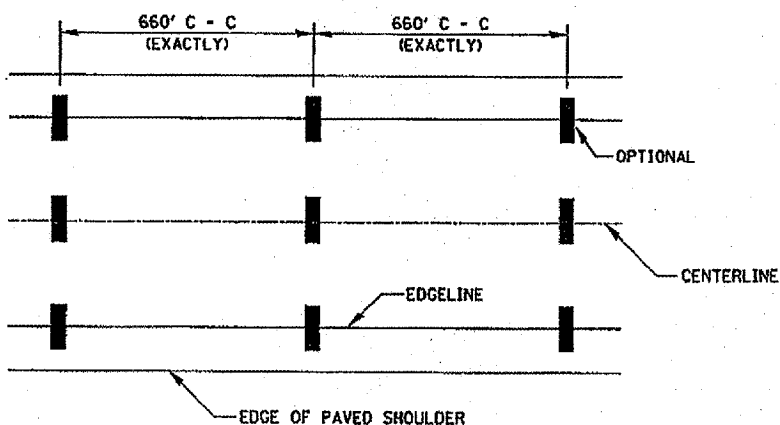
FILE NAME = c:\projects\0509087 (68178679)sheet.dgn	USER NAME = collierbx	DESIGNED - RTB	REVISED -	STATE OF ILLINOIS	EXISTING TYPICAL SECTIONS	F.A.I. RTE. 57	SECTION 05 PATCHING 2008-5	COUNTY DOUGLAS	TOTAL SHEETS 12	SHEET NO. 11
DRAWN - JRP 10-30-07				DEPARTMENT OF TRANSPORTATION		SCALE: NA		SHEET NO. OF SHEETS		STA. TO STA.
CHECKED -						FED. ROAD DIST. NO.		ILLINOIS		FED. AID PROJECT
PLOT SCALE = 1/8" = 1' / 3/4"						CONTRACT NO. 70679				
PLOT DATE = 12/11/2007										

CENTERLINE INTERSTATE OR MULTI-LANE TWO WAY DIVIDED HIGHWAY

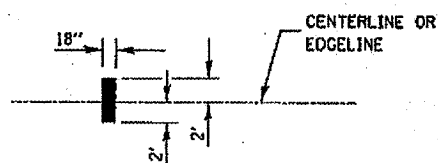


NOTE: PAVEMENT MARKINGS ARE TO BE EXTENDED THROUGH OMISSIONS WHEN APPLICABLE.

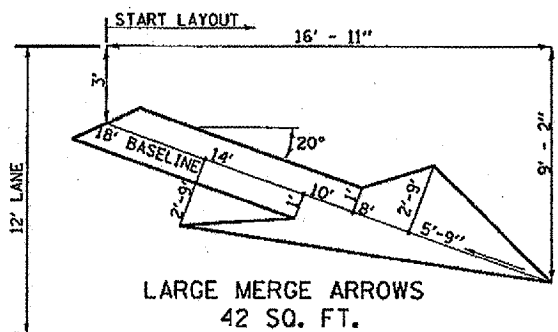
NOTE: SEE ARTICLES 780.04 & 781.03 FOR LOCATION OF STRIPES AND MARKERS RELATIVE TO EDGES OR JOINTS. FOR RAISED REFLECTIVE PAVEMENT MARKERS, REFER TO STANDARD 781001.



IT WILL BE NECESSARY TO HAVE A REPRESENTATIVE OF THE STATE POLICE PRESENT SO THAT THE ACCURACY OF MEASUREMENT CAN BE ATTESTED TO IN COURT.



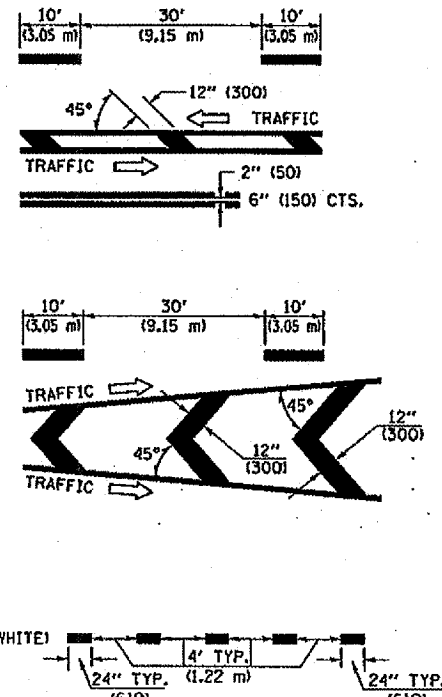
AERIAL SPEED CHECK ZONES



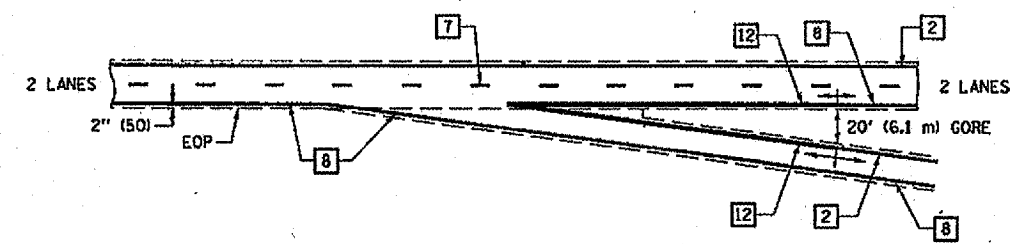
**LARGE MERGE ARROWS
42 SQ. FT.**

TYPICAL PAVEMENT MARKING LEGEND

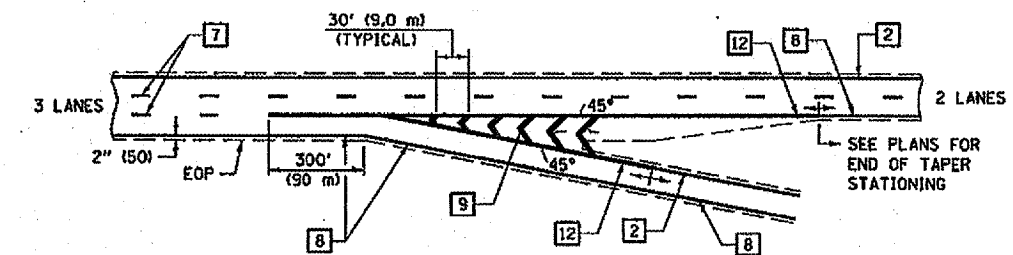
- 1 4" (100) SKIP-DASH (YELLOW)
- 2 4" (100) SOLID (YELLOW)
- 3 12" (300) DIAGONAL (YELLOW)
- 4 4" (100) DOUBLE YELLOW (NARROW)
- 5 RESERVED
- 6 RESERVED
- 7 4" (100) SKIP-DASH (WHITE)
- 8 4" (100) SOLID (WHITE)
- 9 12" (300) DIAGONAL (WHITE)
- 10 6" (150) SOLID (WHITE)
- 11 24" (600) STOP BAR (WHITE)
- 12 8" (200) SOLID (WHITE)
- 13 4" (100) LANE LINE EXTENSIONS (WHITE)



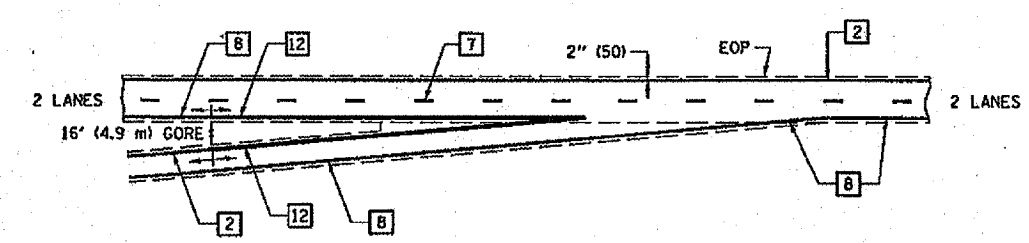
TYPICAL EXIT RAMP TERMINAL



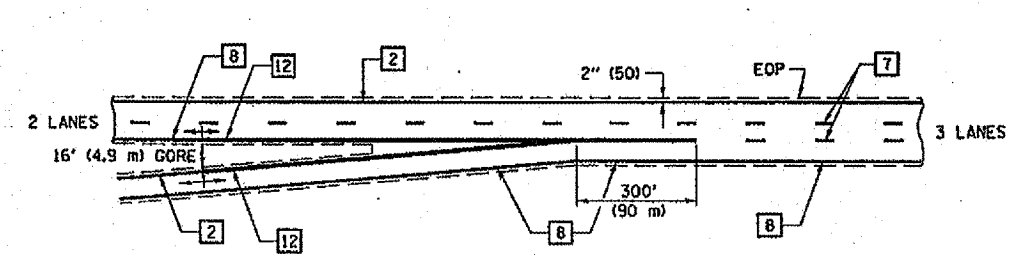
EXIT RAMP TERMINAL with EXCLUSIVE (auxiliary) LANE



TYPICAL ENTRANCE RAMP TERMINAL



ENTRANCE RAMP TERMINAL with EXCLUSIVE LANE



Note: All dimensions are in INCHES (millimeters) unless otherwise shown.

FILE NAME =	USER NAME = collinbw	DESIGNED -	REVISED - 11/06
c:\projects\0508907\08178679\sheet5.dgn		DRAWN -	REVISED -
		CHECKED -	REVISED -
		DATE -	REVISED -

**STATE OF ILLINOIS
DEPARTMENT OF TRANSPORTATION**

PAVEMENT MARKING (INTERSTATE & MULTI-LANE APPLICATIONS)

SCALE: SHEET NO. OF SHEETS STA. TO STA.

DISTRICT 5 DETAIL NO. 7800BBBB				
F.A.I. RTE.	SECTION	COUNTY	TOTAL SHEETS	SHEET NO.
57	05 PATCHING 2008-5	DOUGLAS	12	12
FED. ROAD DIST. NO. ILLINOIS FED. AID PROJECT			CONTRACT NO. 70679	