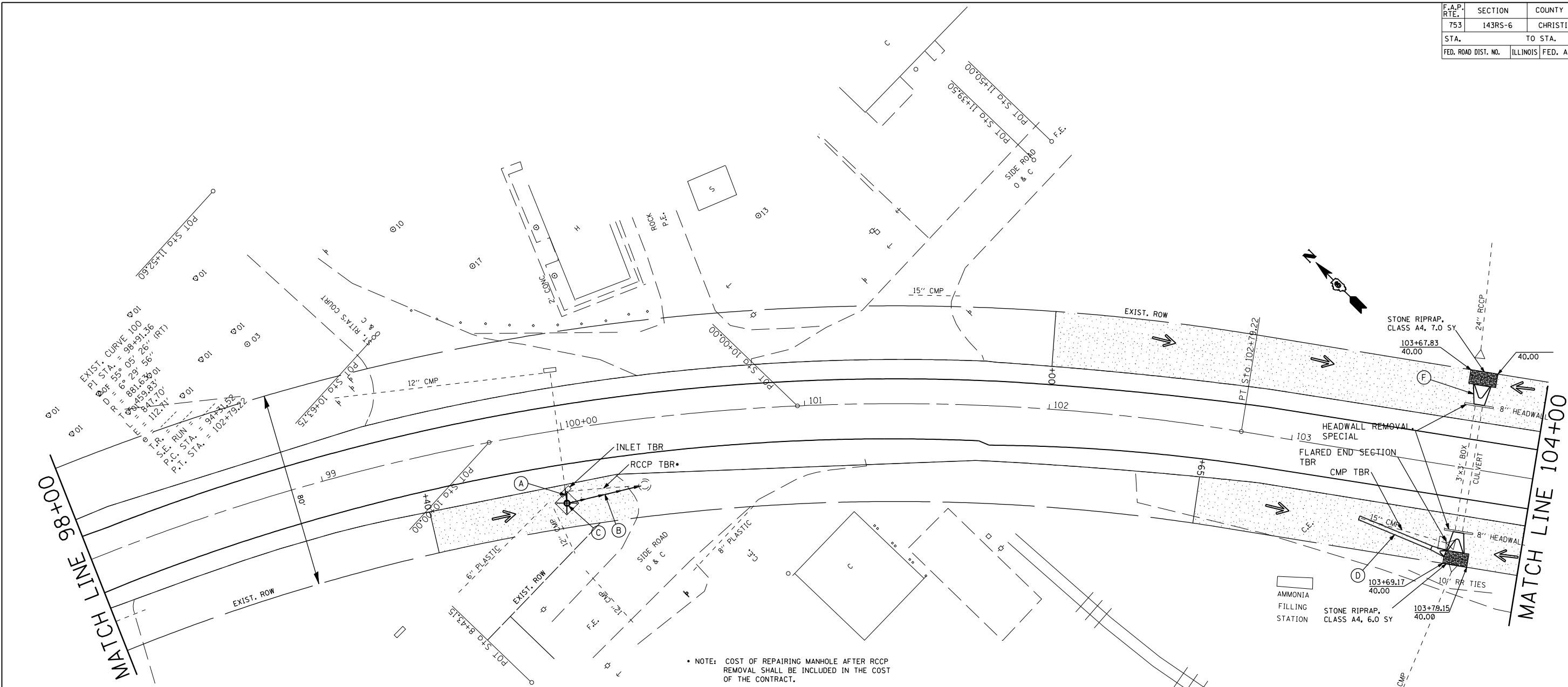


F.A.P. RTE.	SECTION	COUNTY	TOTAL SHEETS	SHEET NO.
753	143RS-6	CHRISTIAN	127	61
STA.		TO STA.		
FED. ROAD DIST. NO.	ILLINOIS	FED. AID PROJECT		



• NOTE: COST OF REPAIRING MANHOLE AFTER RCCP REMOVAL SHALL BE INCLUDED IN THE COST OF THE CONTRACT.

- (A) STORM SEWER, CLASS B, TYPE 1, 12", 5.1' U.S. STA. 99+97.64 24.12' RT (+/-)  $\bar{H}$  = MATCH EXISTING 12" RCCP D.S. STA. 99+97.53 29.26' D.S.  $\bar{H}$  = 595.45
- (B) STORM SEWER, CLASS B, TYPE 1, 12", 30.5' U.S. STA. 99+98.17 30.05' RT (+/-)  $\bar{H}$  = 595.45 D.S. STA. 100+29.54 27.24' D.S.  $\bar{H}$  = 595.00
- (C) INLETS, TYPE A, TYPE 8 GRATE STA. 99+97.51 30.00' RT T.O.R. ELEV. = 597.10 INV. ELEV. = 595.45
- (D) STORM SEWER, CLASS B, TYPE 1 15", 32.0' PRECAST REINFORCED FLARED END SECTIONS, 15" U.S. STA. 103+32.4 26.8' RT U.S.  $\bar{H}$  = MATCH EXISTING PIPE D.S. STA. 103+69.5 35.9' RT D.S.  $\bar{H}$  = 591.71
- (E) PRECAST REINFORCED CONCRETE FLARED END SECTIONS, 42" U.S. STA. 103+73.5 34.5' RT U.S.  $\bar{H}$  = 591.71 D.S. STA. 103+73.5 35.9' RT D.S.  $\bar{H}$  = MATCH EXISTING BOX GRATING FOR CONCRETE FLARED END SECTION, 42"
- (F) U.S. STA. 103+73.5 34.5' RT D.S. STA. 103+73.5 34.5' RT D.S.  $\bar{H}$  = 591.53 END SECTION, 42"

REVISIONS	
NAME	DATE

ILLINOIS DEPARTMENT OF TRANSPORTATION

**STORM WATER POLLUTION PREVENTION PLAN**

SCALE: VERT. HORIZ. DATE

DRAWN BY CHECKED BY