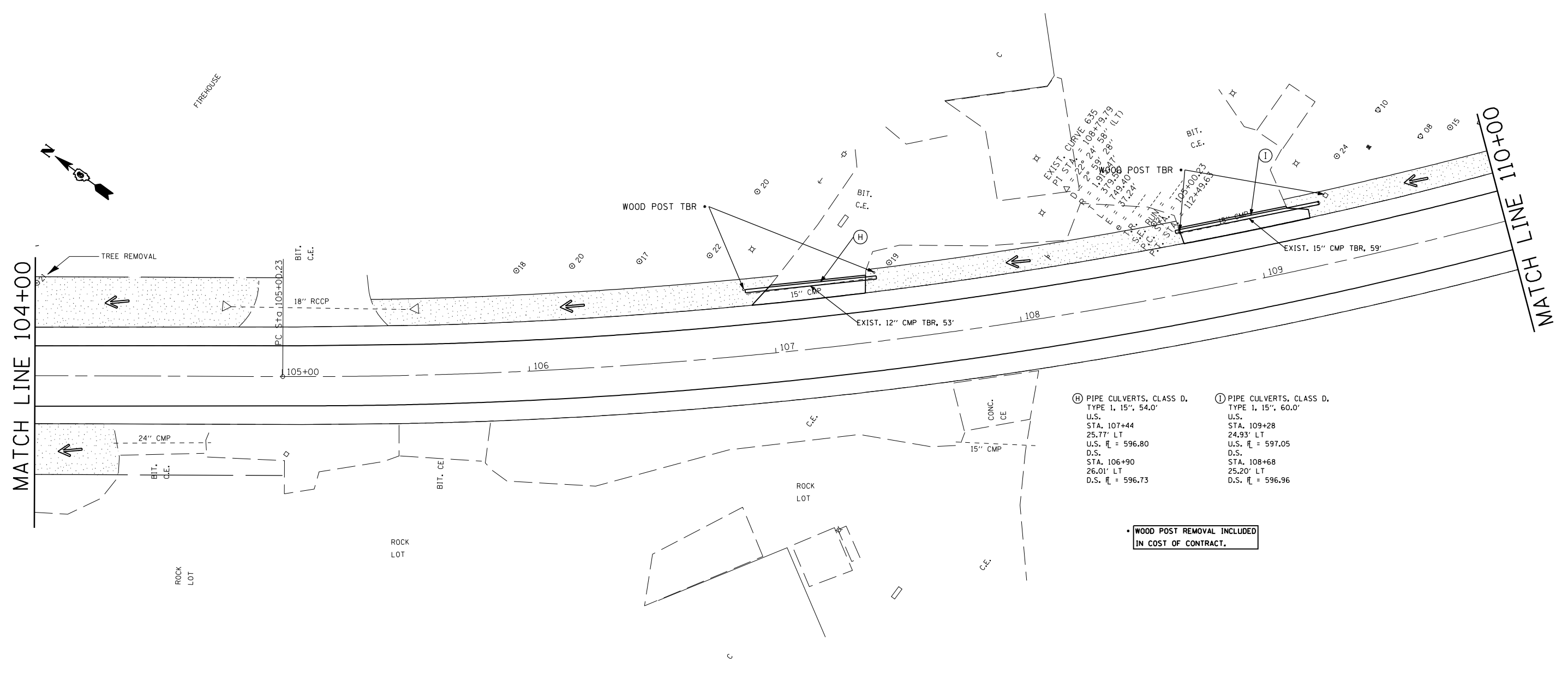


| | | | | |
|---------------------|----------|------------------|--------------|-----------|
| F.A.P. RTE. | SECTION | COUNTY | TOTAL SHEETS | SHEET NO. |
| 753 | 143RS-6 | CHRISTIAN | 127 | 62 |
| STA. | | TO STA. | | |
| FED. ROAD DIST. NO. | ILLINOIS | FED. AID PROJECT | | |



- Ⓗ PIPE CULVERTS, CLASS D.
TYPE 1, 15", 54.0'
U.S.
STA. 107+44
25.77' LT
U.S. \bar{r} = 596.80
D.S.
STA. 106+90
26.01' LT
D.S. \bar{r} = 596.73
- Ⓘ PIPE CULVERTS, CLASS D.
TYPE 1, 15", 60.0'
U.S.
STA. 109+28
24.93' LT
U.S. \bar{r} = 597.05
D.S.
STA. 108+68
25.20' LT
D.S. \bar{r} = 596.96

• WOOD POST REMOVAL INCLUDED
IN COST OF CONTRACT.

| REVISIONS | |
|-----------|------|
| NAME | DATE |
| | |
| | |
| | |
| | |
| | |
| | |
| | |
| | |
| | |
| | |

ILLINOIS DEPARTMENT OF TRANSPORTATION

STORM WATER POLLUTION PREVENTION PLAN

SCALE: VERT. _____
HORIZ. _____

DATE _____ DRAWN BY _____
CHECKED BY _____