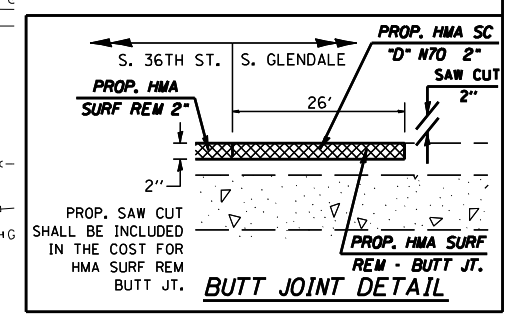
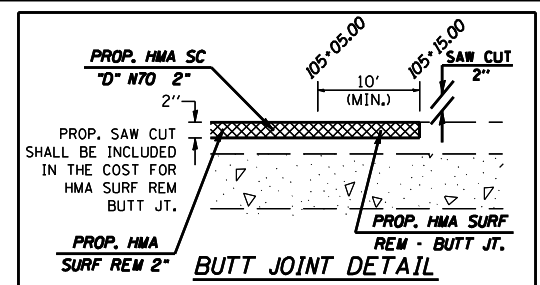
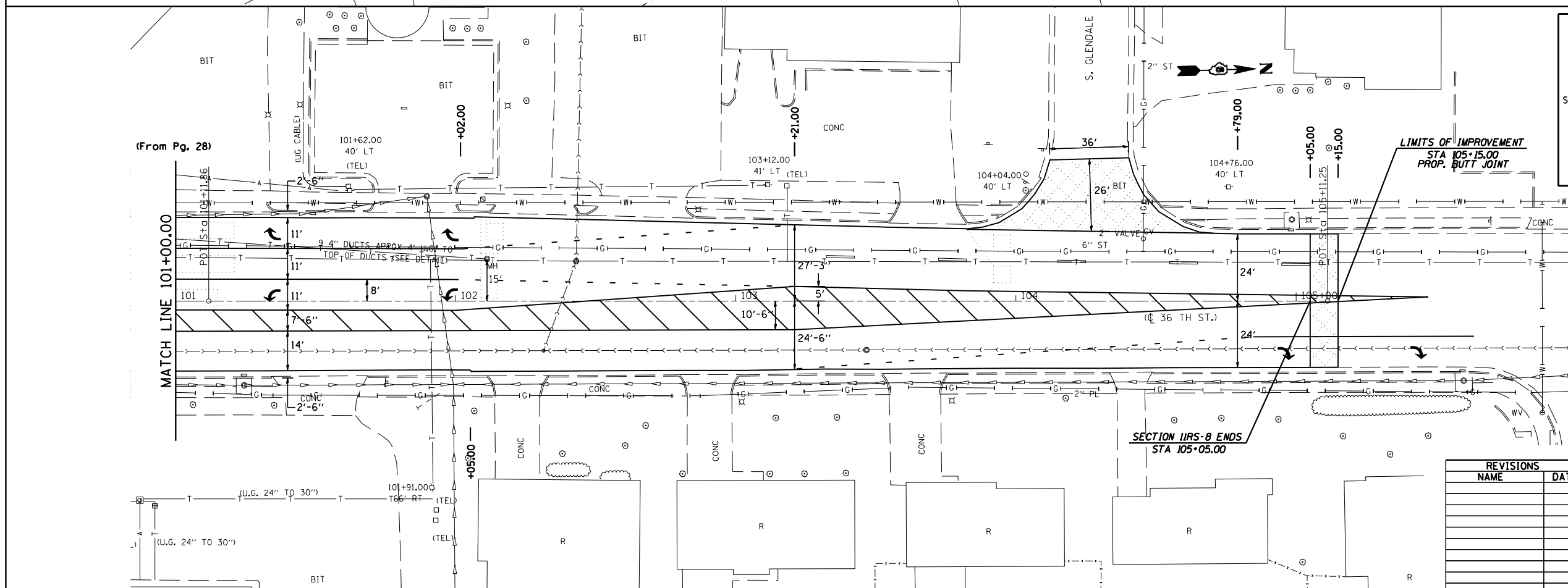
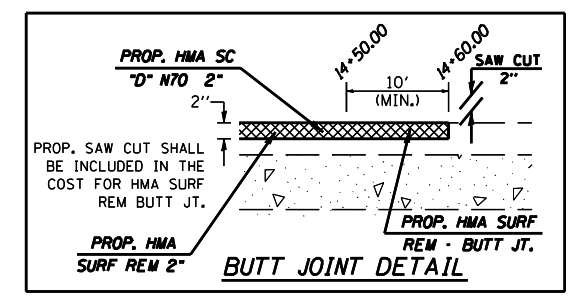
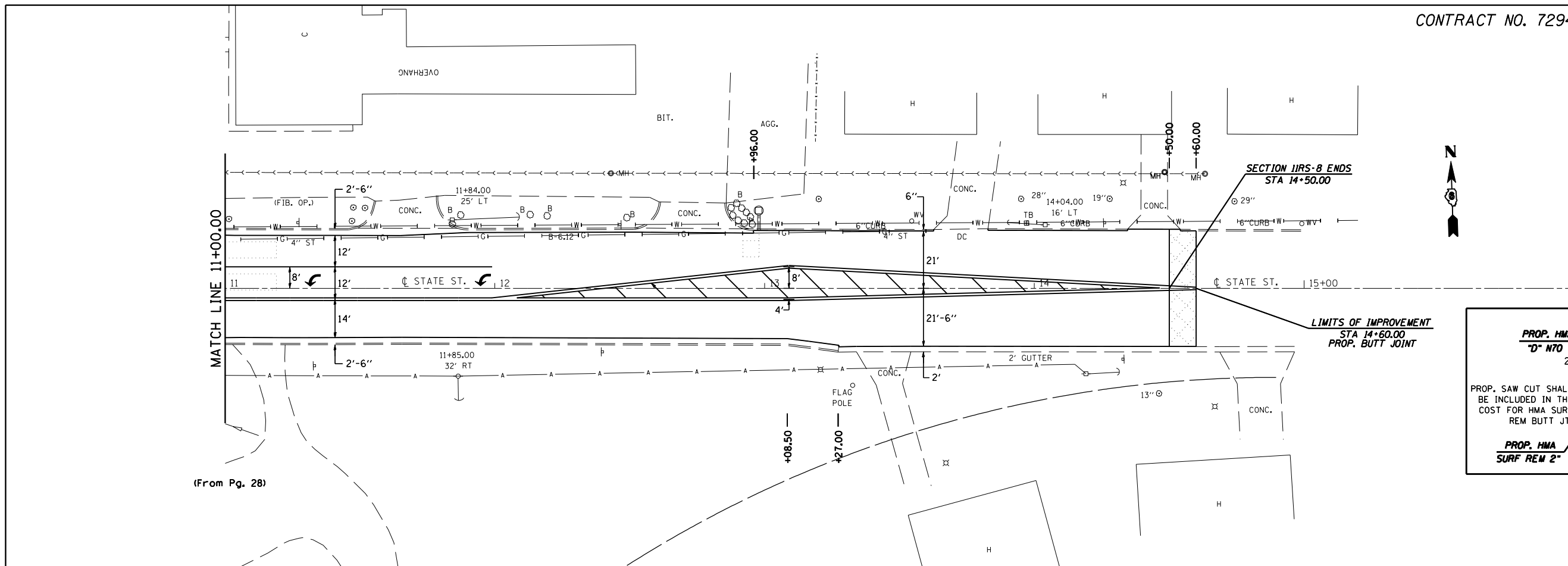


CONTRACT NO. 72943

F.A.U. RTE.	SECTION	COUNTY	TOTAL SHEETS	SHEET NO.
11RS-8	ADAMS	64	29	

STA. **	TO STA. **
FED. ROAD DIST. NO.	ILLINOIS FED. AID PROJECT
• 7810 & 7825 (IL 96)	

\*\* STATE ST. - 11+00.00 TO 14+60.00  
 \*\* 36TH ST. - 101+00.00 TO 105+15.00



REVISIONS	
NAME	DATE

ILLINOIS DEPARTMENT OF TRANSPORTATION  
**PLAN VIEW**  
 F.A.U. Route 7810 & 7825 (IL 96)  
 Section 11 RS-8  
 ADAMS COUNTY  
 SCALE: VERT. 1" = 10'  
 HORIZ. 1" = 40'  
 DATE: FEBRUARY 2, 2006  
 DRAWN BY: JWC  
 CHECKED BY: RSC

PLOT DATE = Nov-02-2007 08:44:55PM  
 FILE NAME = c:\projects\72943\shplan11rs.dgn  
 PLOT SCALE = 42.3525 / IN.  
 USER NAME = laughlin-1