

CONTRACT NO. 72943

F.A.U. RTE.	SECTION	COUNTY	TOTAL SHEETS	SHEET NO.
11RS-8		ADAMS	64	31
STA. 2326+00.00 TO STA. 2338+00.00		ILLINOIS FED. AID PROJECT		
FED. ROAD DIST. NO.		7810 & 7825 (IL 96)		

(From Pg. 30)

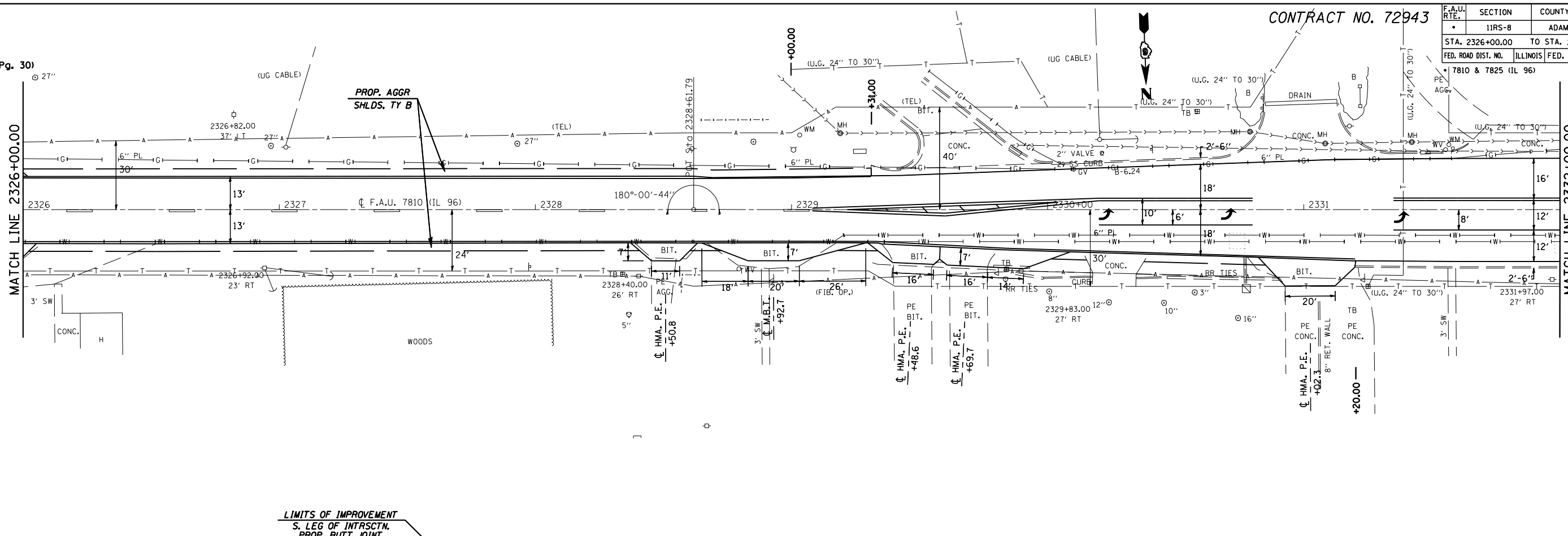
MATCH LINE 2326+00.00

MATCH LINE 2332+00.00

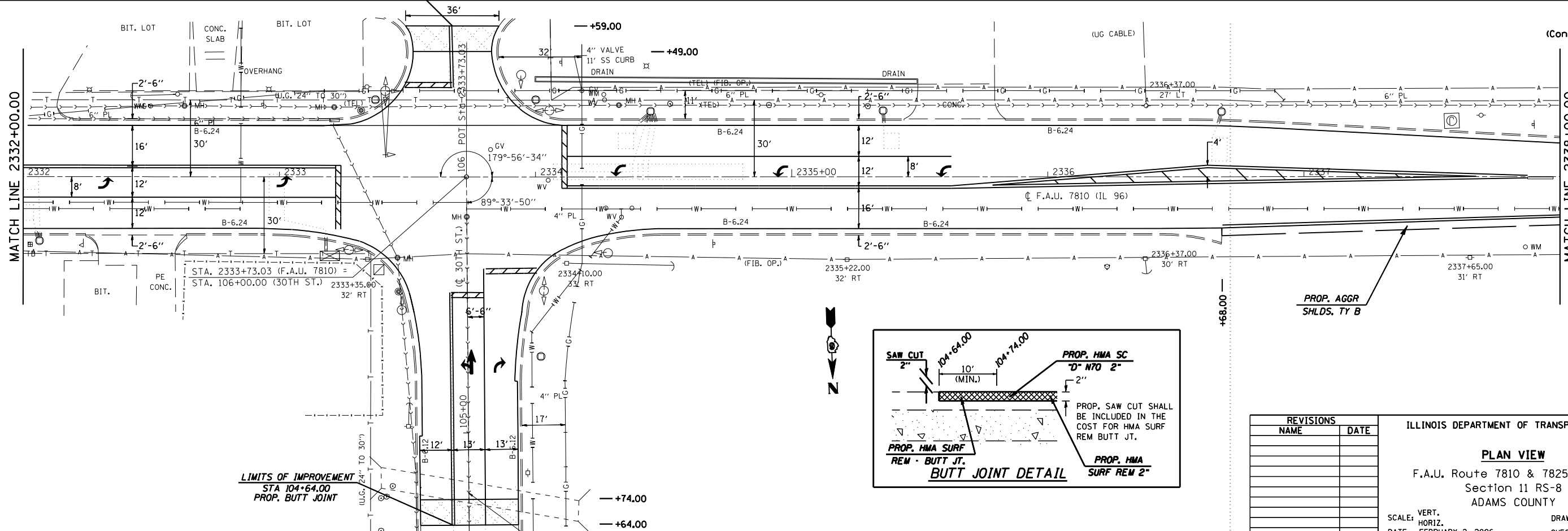
MATCH LINE 2338+00.00

MATCH LINE 2332+00.00

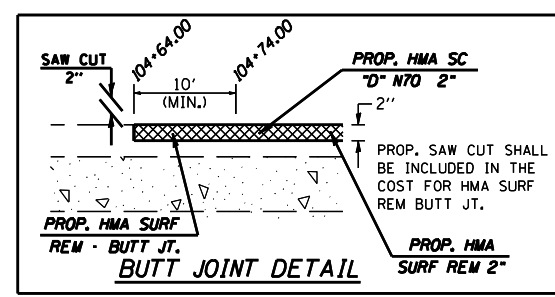
MATCH LINE 2338+00.00



LIMITS OF IMPROVEMENT
S. LEG OF INTRSECTN.
PROP. BUTT JOINT



(Cont. on Pg. 32)



REVISIONS	
NAME	DATE

ILLINOIS DEPARTMENT OF TRANSPORTATION

PLAN VIEW

F.A.U. Route 7810 & 7825 (IL 96)
Section 11 RS-8
ADAMS COUNTY

SCALE: VERT. 1"=10'
HORIZ. 1"=40'

DATE: FEBRUARY 2, 2006

DRAWN BY: JWC
CHECKED BY: RSC

PLOT DATE = Nov-02-2007 08:44:47PM
FILE NAME = c:\p\projects\659605\shplan1196.dgn
PLOT SCALE = 42.3525" / IN.
USER NAME = laughlin-1