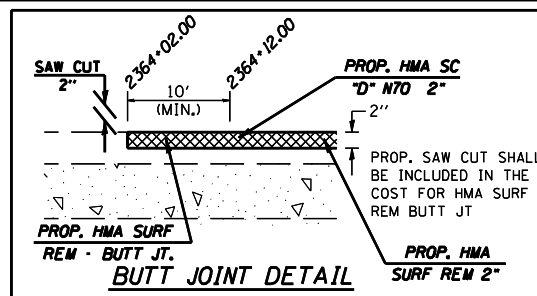
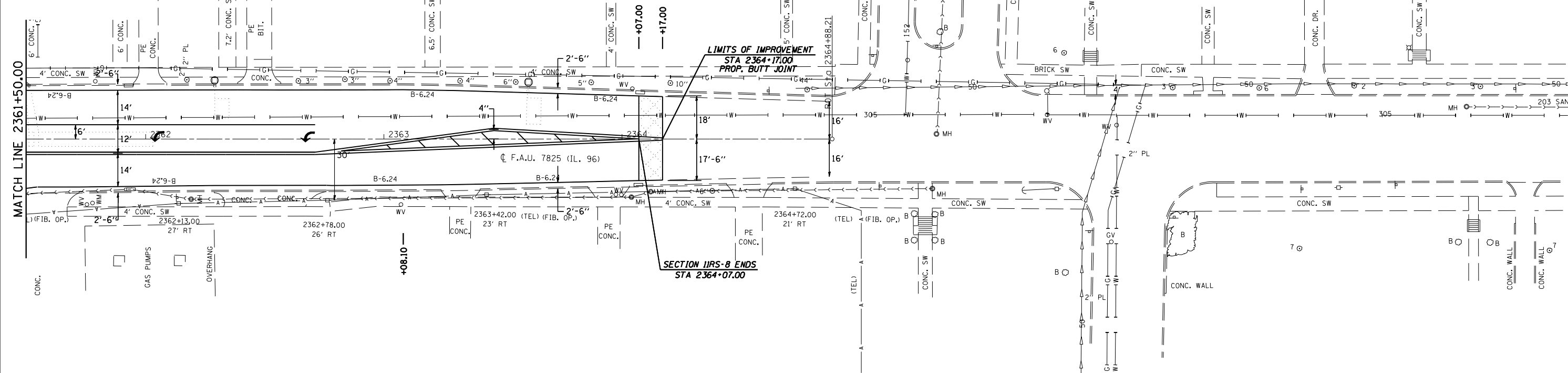


CONTRACT NO. 72943

F.A.U. RTE.	SECTION	COUNTY	TOTAL SHEETS	SHEET NO.
11RS-8	ADAMS	64	34	
STA. 2361+50.00		TO STA. 2364+17.00		
FED. ROAD DIST. NO.		ILLINOIS FED. AID PROJECT		
• 7810 & 7825 (IL 96)				

(From Pg. 33)



PLOT DATE = Nov-02-2007 01:14:51PM  
 FILE NAME = c:\projects\650605\shplan1196.dgn  
 PLOT SCALE = 42.3525' / IN.  
 USER NAME = laughlin-1

D6 PROJECT: D650605 FILE: SHTPLAN1196.DGN

REVISIONS	
NAME	DATE

ILLINOIS DEPARTMENT OF TRANSPORTATION

**PLAN VIEW**

F.A.U. Route 7810 & 7825 (IL 96)  
 Section 11 RS-8  
 ADAMS COUNTY

SCALE: VERT.  
 HORIZ.  
 DATE: FEBRUARY 2, 2006

DRAWN BY: JWC  
 CHECKED BY: RSC