

CONTRACT NO. 72943

F.A.U. RTE.	SECTION	COUNTY	TOTAL SHEETS	SHEET NO.
*	11RS-8	ADAMS	64	45

STA. **	TO STA. **
FED. ROAD DIST. NO.	ILLINOIS FED. AID PROJECT

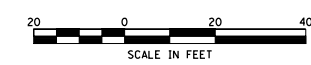
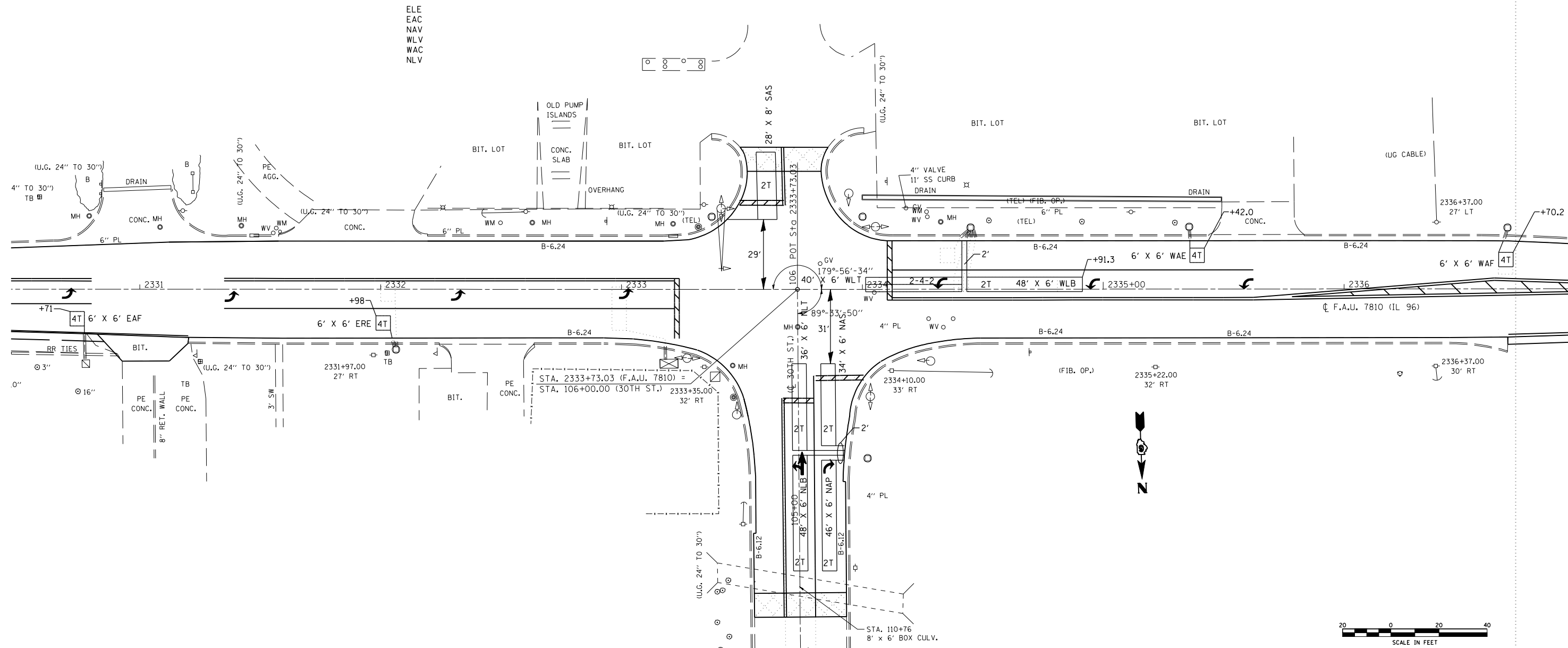
- 7810 & 7825 (IL 96)
- IL 96 - 2331+00.00 to 2337+00.00
- 30TH ST. - 104+54.00 to 106+00.00

TRAFFIC SIGNAL QUANTITIES
30TH & STATE

QUANTITY	UNIT	ITEM
877.0	FOOT	DETECTOR LOOP, TYPE 1

THE FOLLOWING LOOPS SHALL NOT BE REPLACED

- ELE
- EAC
- NAV
- WLW
- WAC
- NLV



REVISIONS	
NAME	DATE

ILLINOIS DEPARTMENT OF TRANSPORTATION	
TRAFFIC SIGNAL DETECTOR LOOP DETAILS	
F.A.U. Route 7810 & 7825 (IL 96)	
Section 11 RS-8	
ADAMS COUNTY	
SCALE: VERT. DRAWN BY: JWC	CHECKED BY: RSC
HORIZ. DATE: JULY 23, 2007	

PLOT DATE = Nov-02-2007 01:15:03PM
 FILE NAME = c:\projects\650605\ts_sheets.dgn
 PLOT SCALE = 42.3525' / IN.
 USER NAME = laughlin-1