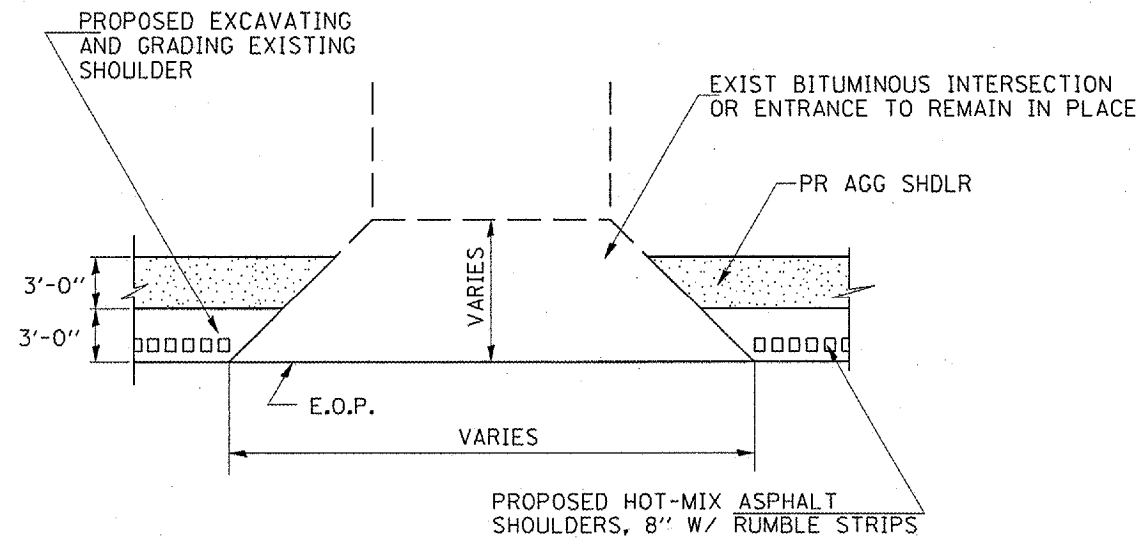
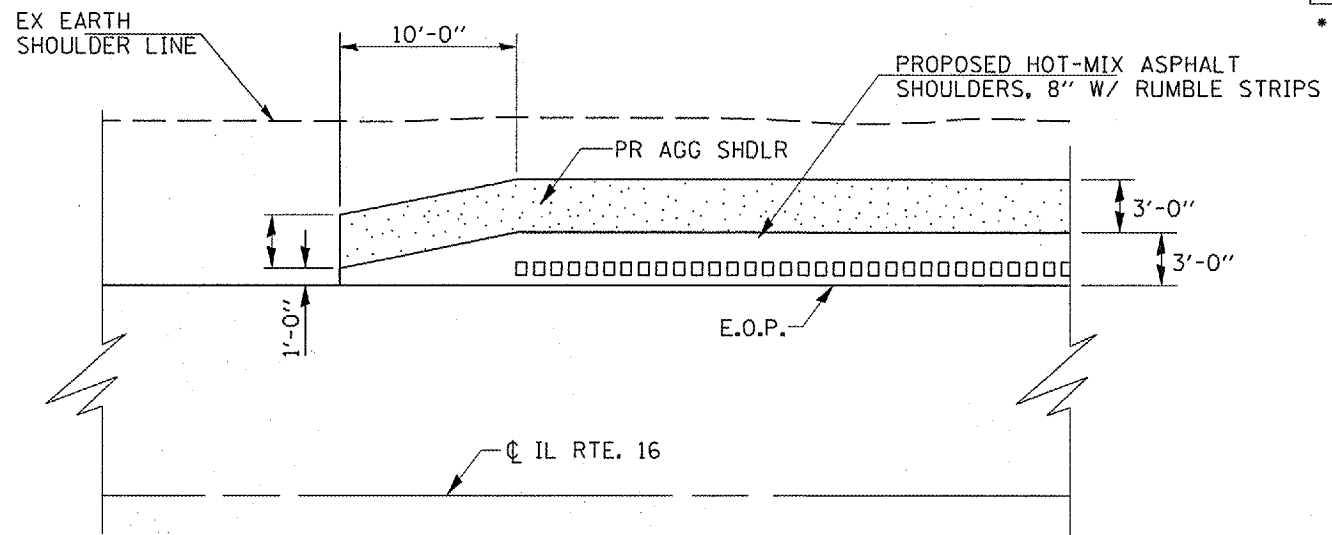


FAP RTE.	SECTION	COUNTY	TOTAL SHEETS	SHEET NO.
320	*	LOGAN	12	8
STA.		TO STA.		
FED. ROAD DIST. NO.		ILLINOIS FED. AID PROJECT		

* D-6 SHLDR RUMBLE STRIPS 2008-04

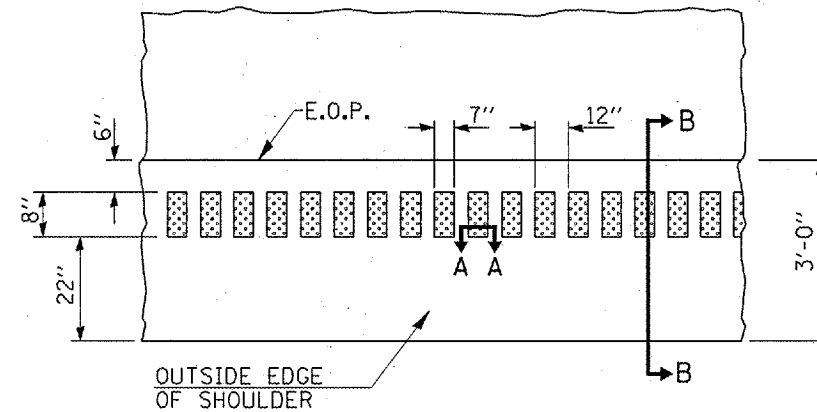


PLAN VIEW
TYPICAL APPLICATION AT
INTERSECTION & ENTRANCE

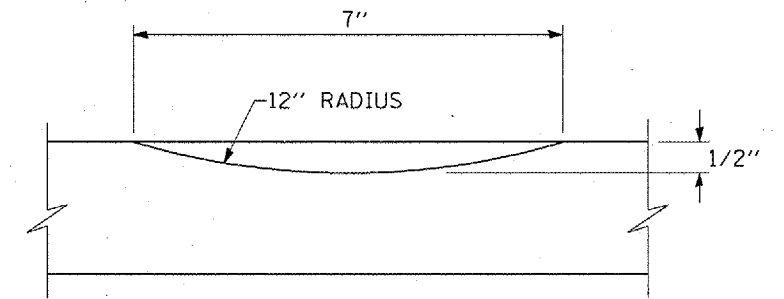


TAPER DETAIL FOR PROPOSED AGGREGATE & HOT-MIX ASPHALT SHOULDERS

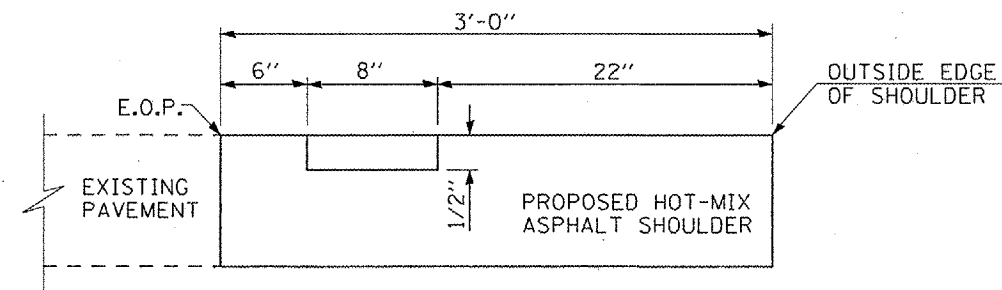
(TRANSITION WIDTH FOR PROPOSED BITUMINOUS SHOULDERS FROM 1'-0" TO 3'-0" WITHIN 10'-0")



PLAN VIEW



SECTION A-A



SECTION B-B

ILLINOIS DEPARTMENT OF TRANSPORTATION
SHOULDER &
RUMBLE STRIP DETAILS
 FAP 320 (IL 16)
 SECT. D-6 SHLDR RUMBLE STRIPS 2008-04
 LOGAN COUNTY

DATE _____ DRAWN BY RTS

PLOT DATE = Nov-15-2007 8:24:24 AM
 FILE NAME = c:\p\projects\1187\shldr\shldr.dgn
 PLOT SCALE = 1/8" = 1'-0"
 USER NAME = laughton1