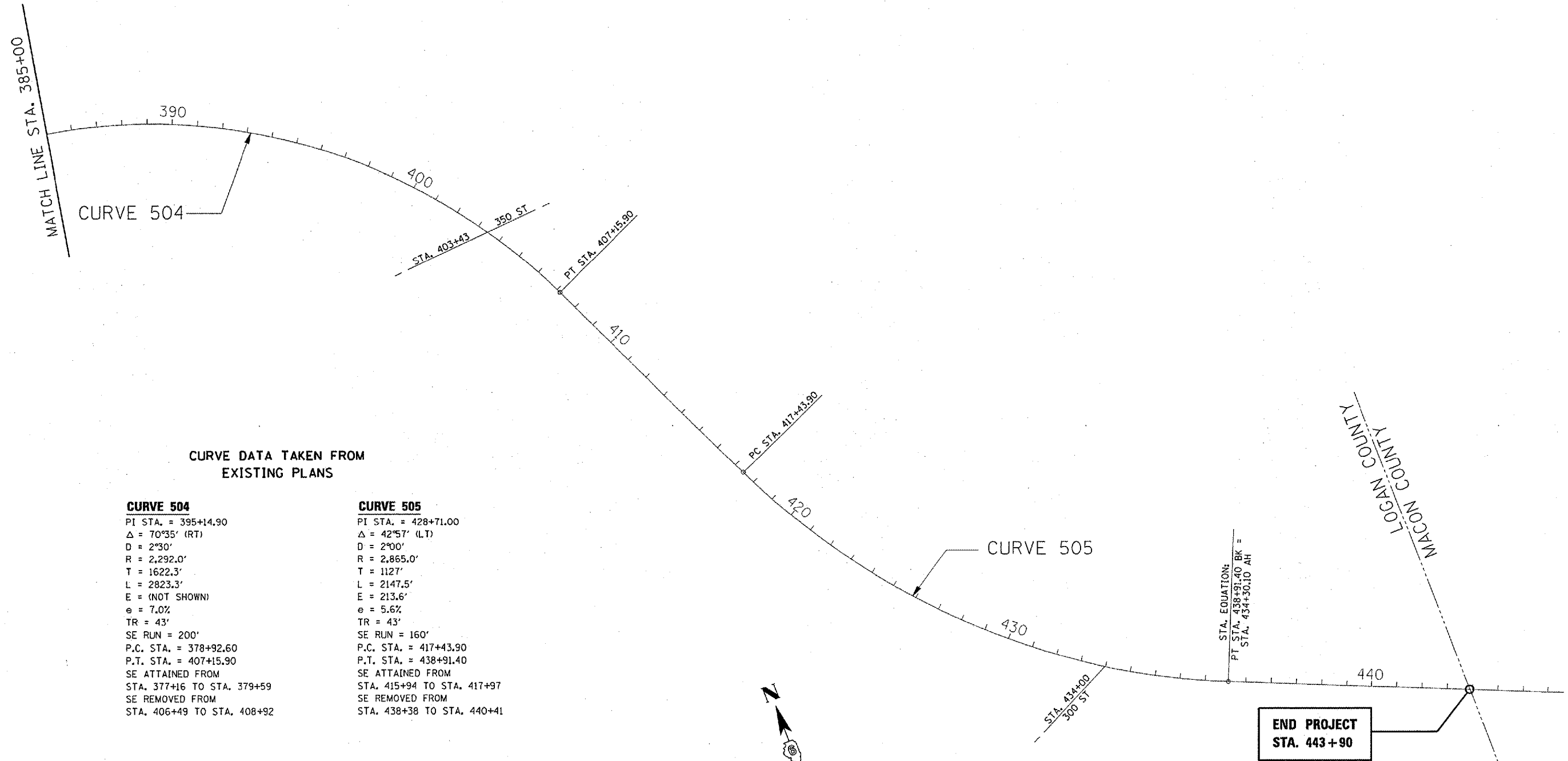


F.A.P. RTE.	SECTION	COUNTY	TOTAL SHEETS	SHEET NO.
320	*	LOGAN	12	10
STA.		TO STA.		
FED. ROAD DIST. NO.		ILLINOIS FED. AID PROJECT		

• D-6 SHLDR RUMBLE STRIPS 2008-4



CURVE DATA TAKEN FROM EXISTING PLANS

CURVE 504

PI STA. = 395+14.90
 Δ = 70°35' (RT)
 D = 2°30'
 R = 2,292.0'
 T = 1622.3'
 L = 2823.3'
 E = (NOT SHOWN)
 e = 7.0%
 TR = 43'
 SE RUN = 200'
 P.C. STA. = 378+92.60
 P.T. STA. = 407+15.90
 SE ATTAINED FROM
 STA. 377+16 TO STA. 379+59
 SE REMOVED FROM
 STA. 406+49 TO STA. 408+92

CURVE 505

PI STA. = 428+71.00
 Δ = 42°57' (LT)
 D = 2°00'
 R = 2,865.0'
 T = 1127'
 L = 2147.5'
 E = 213.6'
 e = 5.6%
 TR = 43'
 SE RUN = 160'
 P.C. STA. = 417+43.90
 P.T. STA. = 438+91.40
 SE ATTAINED FROM
 STA. 415+94 TO STA. 417+97
 SE REMOVED FROM
 STA. 438+38 TO STA. 440+41

REVISIONS	
NAME	DATE

ILLINOIS DEPARTMENT OF TRANSPORTATION
LINE DIAGRAM SHEETS
 FAP 320 (IL 121)
 SECT. D-6 SHLDR RUMBLE STRIPS 2008-4
 LOGAN COUNTY
 SCALE: VERT. _____
 DATE _____
 DRAWN BY _____
 CHECKED BY _____

PLOT DATE = Nov-15-2007 07:24:05AM
 FILE NAME = c:\p\projects\681087\l\roadplan.dgn
 PLOT SCALE = 847.8088 / IN.
 USER NAME = laughtlin