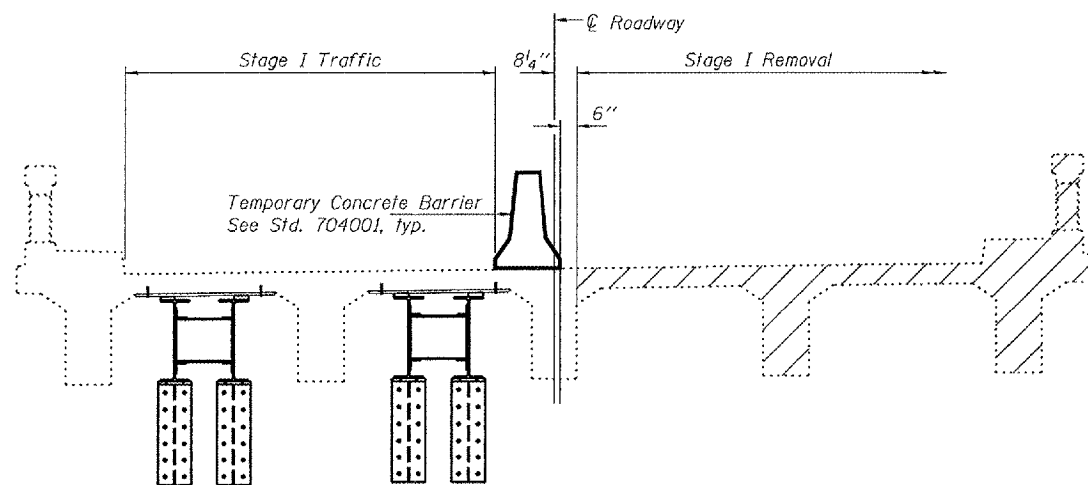


STATE OF ILLINOIS
DEPARTMENT OF TRANSPORTATION

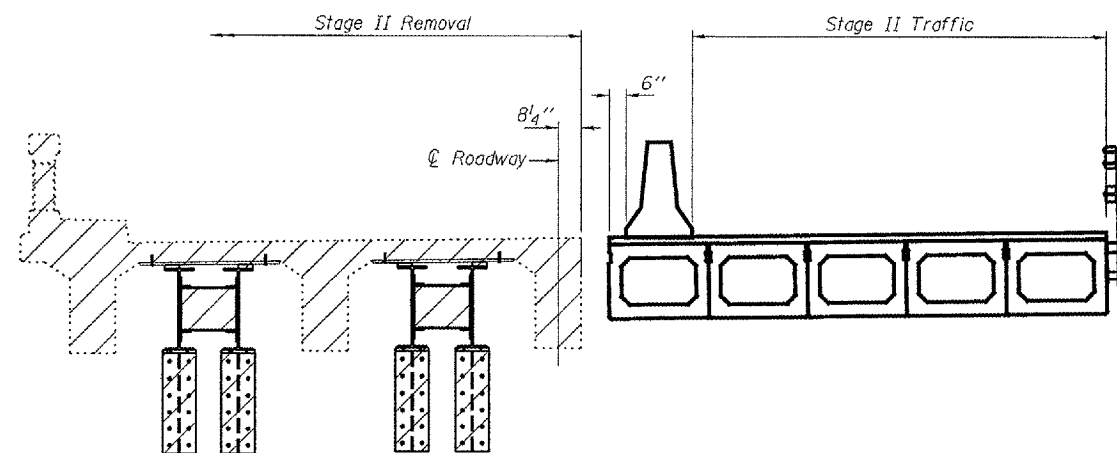
| | | | | |
|------------------------|----------|------------------|-----------|--------------|
| ROUTE NO. | SECTION | COUNTY | SHEET NO. | TOTAL SHEETS |
| IL 97 | | SANGAMON | 10 | 4 |
| FED. HIGH. DIST. NO. 7 | ILLINOIS | FED. AID PROJECT | | |

SHEET NO. 2
8 SHEETS

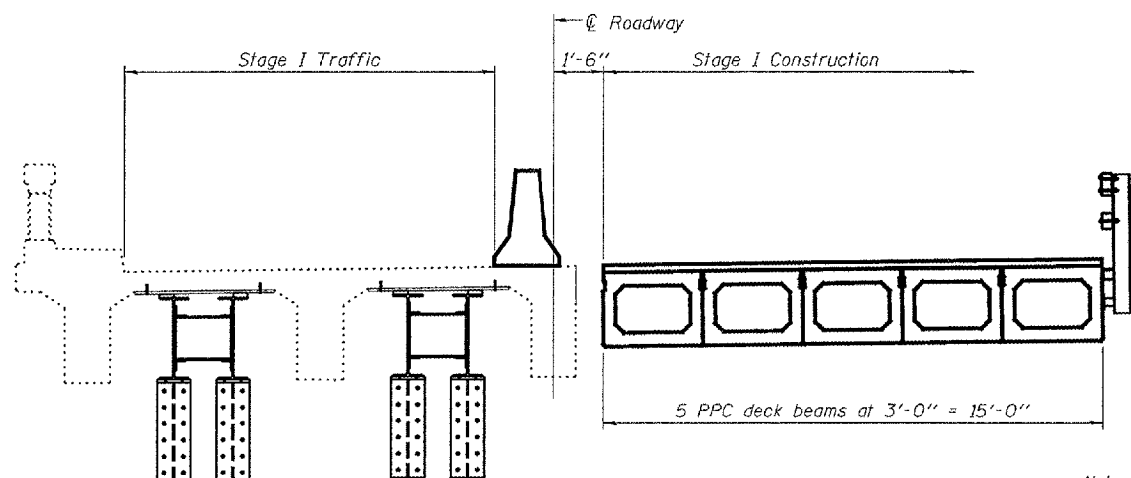
Contract Number: 72B69



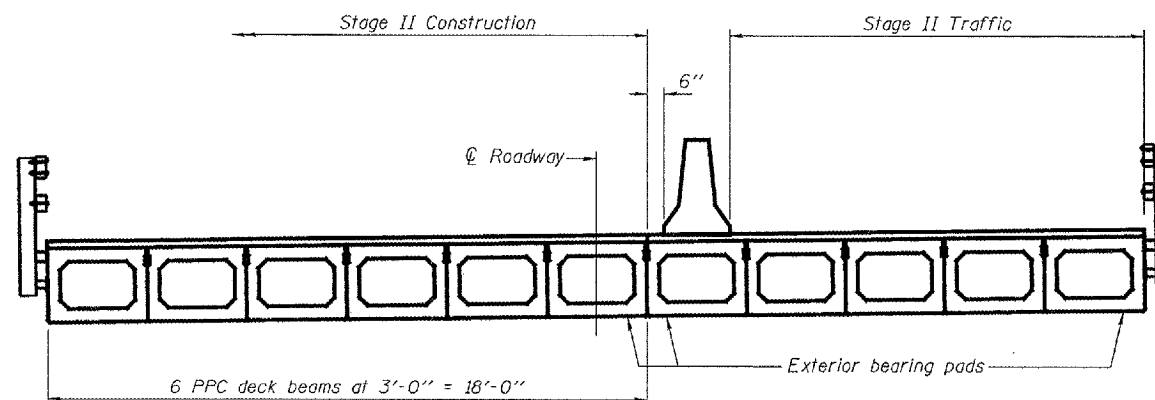
STAGE I REMOVAL



STAGE II REMOVAL



STAGE I CONSTRUCTION



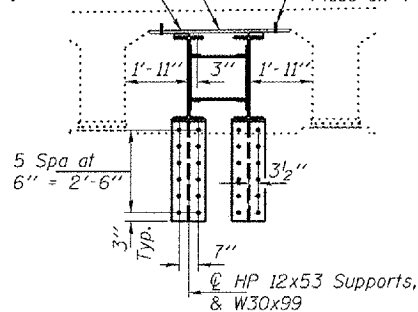
STAGE II CONSTRUCTION

Note:
All views are looking West.
Hatched areas indicate Removal.
After removal, anchor bolts for
HP sections to be cut flush with
wall and sealed. Typ.

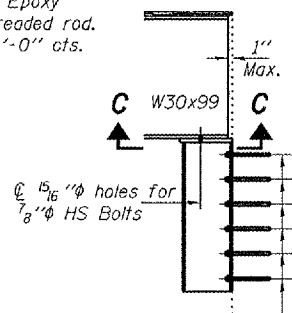
1" x 4'-1/2" Plywood.
Cost included with Erecting
Structural Steel.

1" x 6" x 12" Shim Pl., placed
at 3'-0" cts. Add additional
shims as necessary. Tack
weld to beam.

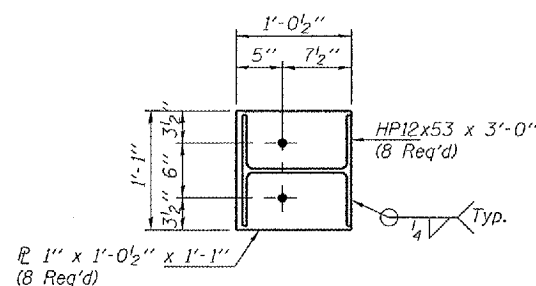
5/8" φ x 5" Epoxy
grouted threaded rod.
Place on 4'-0" cts.



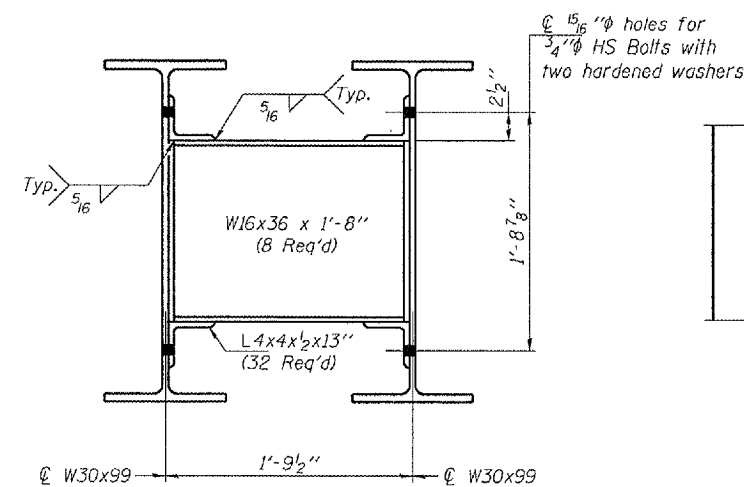
SECTION A-A



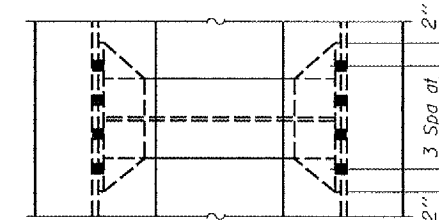
SECTION B-B



SECTION C-C



DIAPHRAGM ELEVATION



DIAPHRAGM PLAN

STAGING DETAILS
IL. 97 OVER PRAIRIE CREEK
SANGAMON COUNTY
SN 084-0046

| | |
|----------|---------|
| DESIGNED | VHV |
| CHECKED | ATH |
| DRAWN | baliva |
| CHECKED | VHV ATH |

JANUARY 22, 2008
EXAMINED *Carl P. ...*
ENGINEER OF STRUCTURAL SERVICES
PASSED *Ralph E. Anderson*
ENGINEER OF BRIDGES AND STRUCTURES