

F.A.P. RTE.	SECTION	COUNTY	TOTAL SHEETS	SHEET NO.
328		WAYNE	141	1

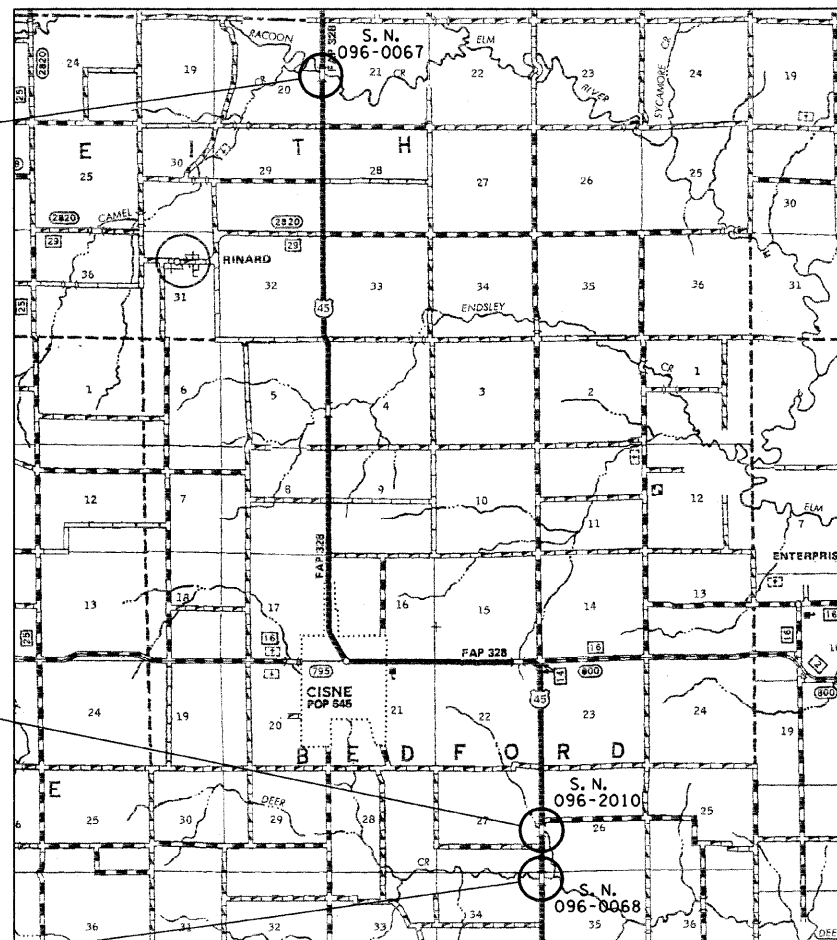
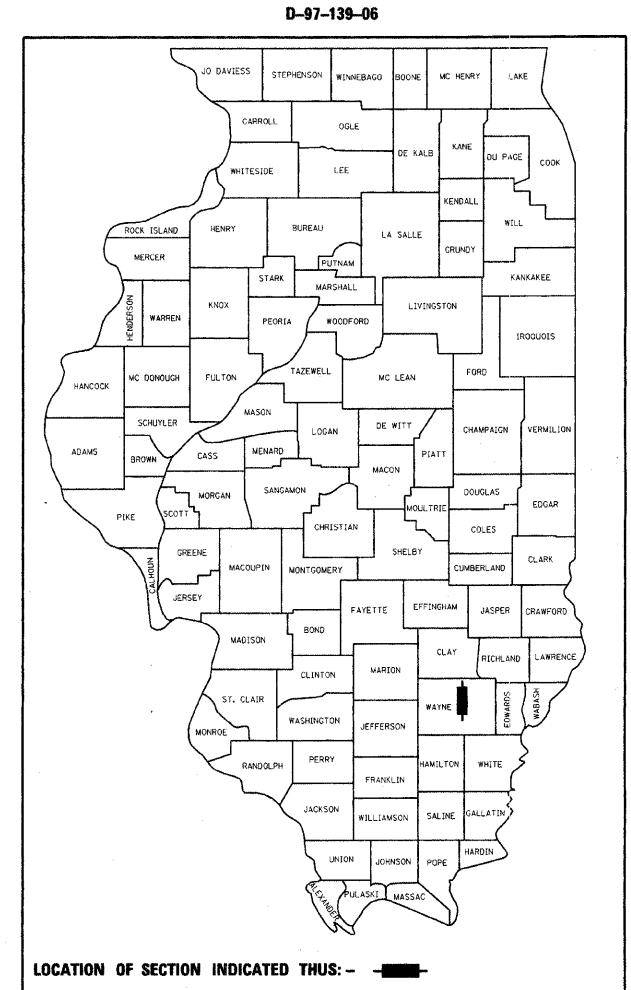
SECTION (10BR-2, 10BR-3, 8BR-2)B-1

STATE OF ILLINOIS
DEPARTMENT OF TRANSPORTATION
DIVISION OF HIGHWAYS

**PROPOSED
HIGHWAY PLANS**

F.A.P. ROUTE 328 (U.S. ROUTE 45)
SECTION (10BR-2, 10BR-3, 8BR-2)B-1
PROJECT: BRF-0328(023)
WAYNE COUNTY
C-97-139-06

FOR INDEX OF SHEETS, SEE SHEET NO. 2



PROJECT BEGINS STA. 884+90.00
PROJECT ENDS STA. 892+30.00
SECTION (8BR-2)B-1
STATION 888+60.00
WAYNE COUNTY
SN 096-0067
RACCOON CREEK

PROJECT BEGINS STA. 408+70.00
PROJECT ENDS STA. 411+30.00
SECTION (10BR-3)B-1
STATION 410+21.00
WAYNE COUNTY
SN 096-2010
BRANCH OF DEER CREEK

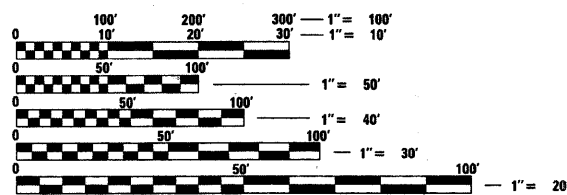
PROJECT BEGINS STA.
PROJECT ENDS STA.
SECTION (10BR-2)B-1
STATION 384+58.40
WAYNE COUNTY
SN 096-0068
DEER CREEK

SN 096-2010
GROSS LENGTH OF PROJECT = 260.00 FEET = 0.05 MILE
NET LENGTH OF PROJECT = 260.00 FEET = 0.05 MILE

SN 096-0067
GROSS LENGTH OF PROJECT = 740.00 FEET = 0.14 MILE
NET LENGTH OF PROJECT = 740.00 FEET = 0.14 MILE

SN 096-0068
GROSS LENGTH OF PROJECT = 900.00 FEET = 0.17 MILE
NET LENGTH OF PROJECT = 900.00 FEET = 0.17 MILE

ADT 2007 AT SN 096-2010 = 2549
ADT 2007 AT SN 096-0067 = 2711
ADT 200 AT SN 096-0068 = 2322



FULL SIZE PLANS HAVE BEEN PREPARED USING STANDARD ENGINEERING SCALES. REDUCED SIZED PLANS WILL NOT CONFORM TO STANDARD SCALES. IN MAKING MEASUREMENTS ON REDUCED PLANS, THE ABOVE SCALES MAY BE USED.

J.U.L.I.E.
JOINT UTILITY LOCATION INFORMATION FOR EXCAVATION
1-800-892-0123

CONTRACT NO. 74040

STATE OF ILLINOIS
DEPARTMENT OF TRANSPORTATION
DIVISION OF HIGHWAYS

SUBMITTED October 26 2007

Christine M. Reed
DEPUTY DIRECTOR OF HIGHWAYS, REGION ENGINEER

December 7, 20 07

Eric E. Harms
ENGINEER OF DESIGN AND ENVIRONMENT

December 7, 20 07

Christine M. Reed
DIRECTOR OF HIGHWAYS, CHIEF ENGINEER

**PRINTED BY THE AUTHORITY
OF THE STATE OF ILLINOIS**

PROJECT ENGINEER: BILL STANLEY
SQUAD LEADER: MYRA OLTMAN
TELEPHONE: 217-342-8320