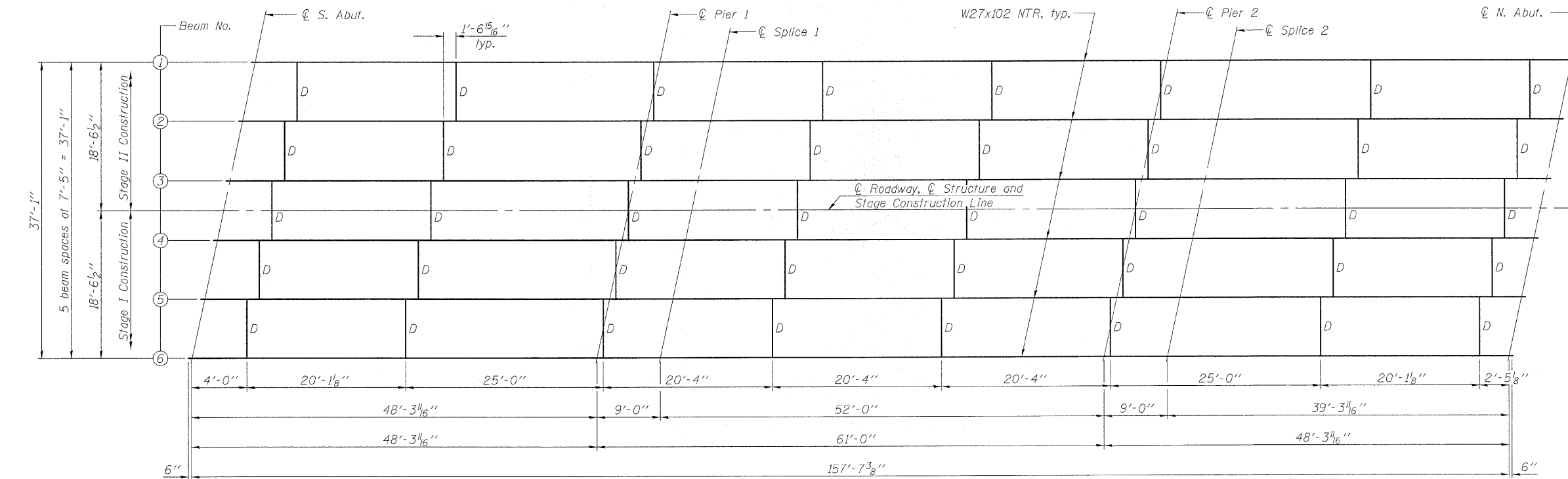


STATE OF ILLINOIS  
DEPARTMENT OF TRANSPORTATION

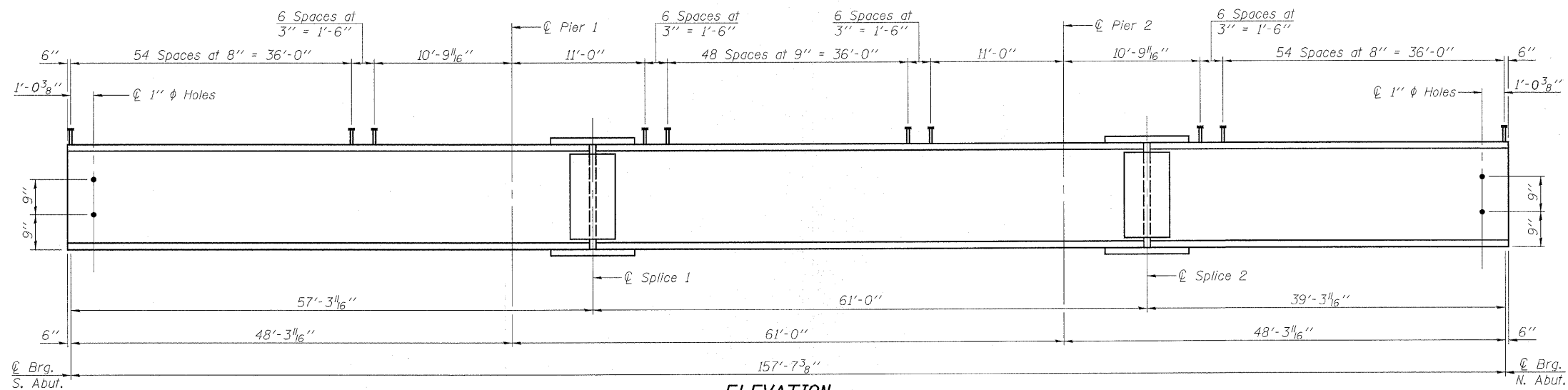
ROUTE NO.	SECTION	COUNTY	TOTAL SHEETS	SHEET NO.
F.A.P. 328	(8BR-2) B-1	WAYNE	140	36
FED. ROAD DIST. NO. 7	ILLINOIS	FED. AID PROJECT-		

SHEET NO. 14  
25 SHEETS

Contract #74040

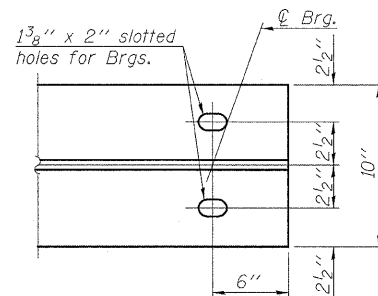


FRAMING PLAN

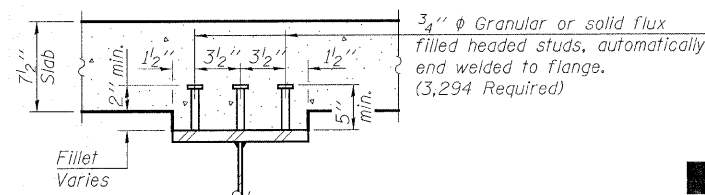


ELEVATION

All beams W27x102 and splice plates shall be AASHTO M 270, Grade 50 and shall meet Notch Toughness Requirements.



END OF BEAM DETAIL



SECTION A-A

DESIGNED	SJB
CHECKED	EML
DRAWN	KLH
CHECKED	EML

**HORNER & SHIFRIN, INC.**  
ENGINEERS

STRUCTURAL STEEL  
F.A.P. ROUTE 328 - SECTION (8BR-2)B-1  
WAYNE COUNTY  
STATION 888+60.00  
STRUCTURE NO. 096-0067