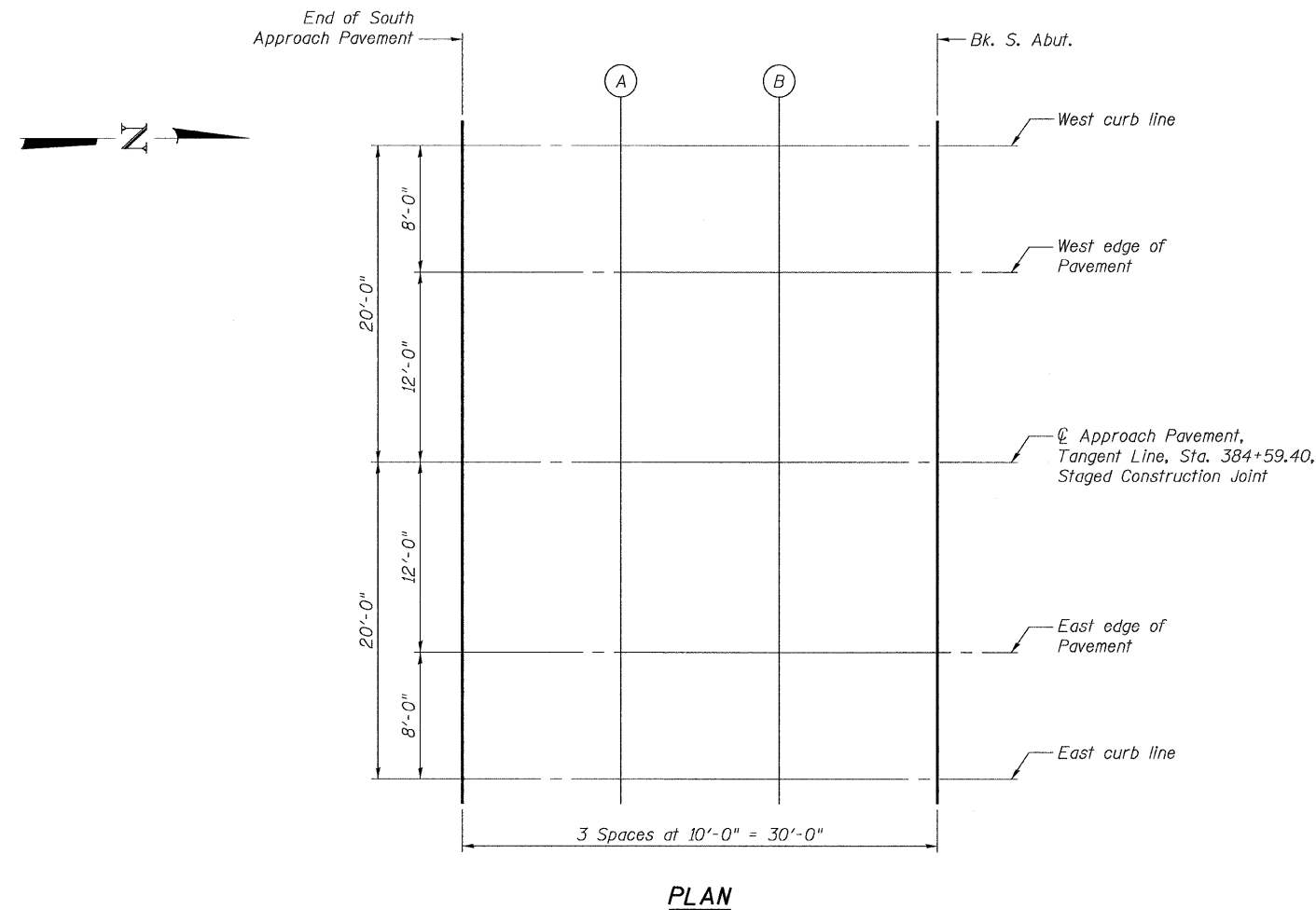


STATE OF ILLINOIS
DEPARTMENT OF TRANSPORTATION

ROUTE NO. FAP 328	SECTION (10BR- 2)B-1	COUNTY WAYNE	TOTAL SHEETS	SHEET NO. 101	SHEET NO. 8 21 SHEETS
FED. ROAD DIST. NO. 7		ILLINOIS	FED. AID PROJECT		

Contract # 74040



WEST CURB LINE & EAST CURB LINE

Location	Station	Offset	Theoretical Grade Elevations
End. S. Appr. Pav't.	383+61.90	20.00'	423.96
A	383+71.90	20.00'	423.98
B	383+81.90	20.00'	424.00
Bk. S. Abut.	383+91.90	20.00'	424.02

WEST EDGE OF PAVEMENT & EAST EDGE OF PAVEMENT

Location	Station	Offset	Theoretical Grade Elevations
End. S. Appr. Pav't.	383+61.90	12.00'	424.12
A	383+71.90	12.00'	424.15
B	383+81.90	12.00'	424.17
Bk. S. Abut.	383+91.90	12.00'	424.19

TANGENT LINE & STAGED CONSTRUCTION JOINT

Location	Station	Offset	Theoretical Grade Elevations
End. S. Appr. Pav't.	383+61.90	0.00'	424.31
A	383+71.90	0.00'	424.33
B	383+81.90	0.00'	424.36
Bk. S. Abut.	383+91.90	0.00'	424.37

BENTON & ASSOCIATES, INC.

DESIGNED	MBH
CHECKED	NRF
DRAWN	MBH
CHECKED	NRF

E-AS

9-3-07

TOP OF SLAB ELEVATIONS
SOUTH APPROACH
US 45 / DEER CREEK
F.A.P. RT. 328
WAYNE COUNTY
SN. 096-0068