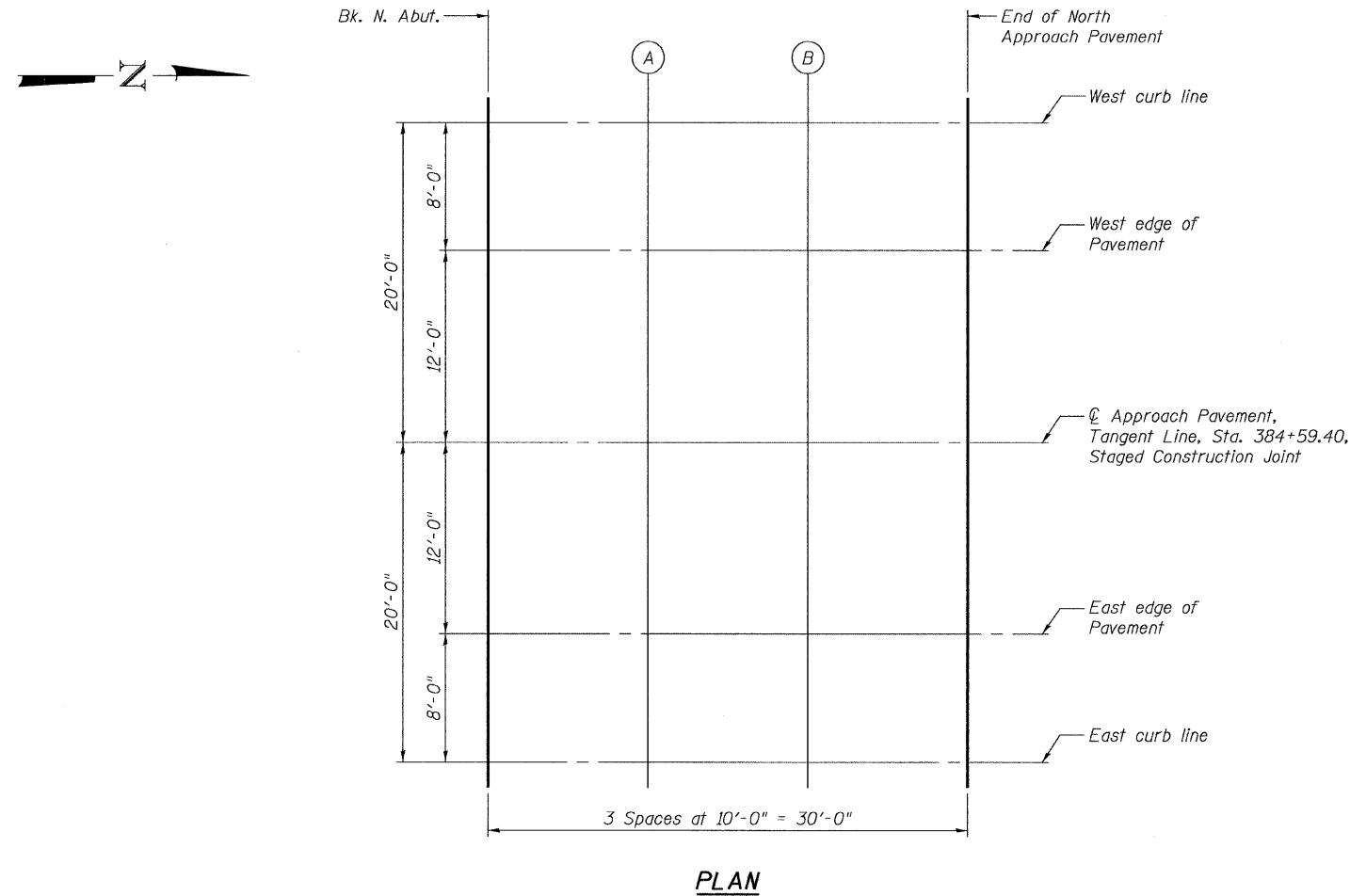


STATE OF ILLINOIS
DEPARTMENT OF TRANSPORTATION

ROUTE NO.	SECTION	COUNTY	TOTAL SHEETS	SHEET NO.	SHEET NO. 9 21 SHEETS
FAP 328	(10BR-2)B-1	WAYNE		108	
FED. ROAD DIST. NO. 7	ALIGNMENT	FED. AID PROJECT	Contract # 74040		



WEST CURB LINE & EAST CURB LINE

Location	Station	Offset	Theoretical Grade Elevations
Bk. N. Abut.	385+26.90	20.00'	423.96
A	385+36.90	20.00'	423.94
B	385+46.90	20.00'	423.91
End N. Appr. Pav't.	385+56.90	20.00'	423.87

WEST EDGE OF PAVEMENT & EAST EDGE OF PAVEMENT

Location	Station	Offset	Theoretical Grade Elevations
Bk. N. Abut.	385+26.90	12.00'	424.13
A	385+36.90	12.00'	424.10
B	385+46.90	12.00'	424.07
End N. Appr. Pav't.	385+56.90	12.00'	424.04

TANGENT LINE & STAGED CONSTRUCTION JOINT

Location	Station	Offset	Theoretical Grade Elevations
Bk. N. Abut.	385+26.90	0.00'	424.32
A	385+36.90	0.00'	424.29
B	385+46.90	0.00'	424.26
End N. Appr. Pav't.	385+56.90	0.00'	424.23

BENTON & ASSOCIATES, INC.

DESIGNED	MBH
CHECKED	NRF
DRAWN	MBH
CHECKED	NRF

E-SAS

19-B-087

TOP OF SLAB ELEVATIONS
NORTH APPROACH
US 45 / DEER CREEK
F.A.P. RT. 328
WAYNE COUNTY
SN. 096-0068