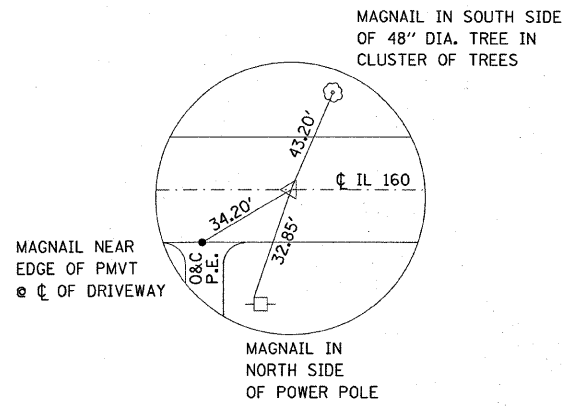


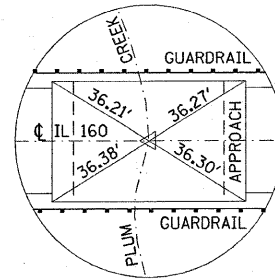
SN 095-0006(E) 0077(P)

NOTE: ALL TIES ARE DIRECT / SLOPE TAPED MEASUREMENTS



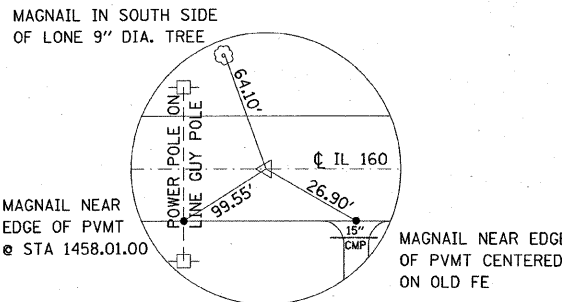
TIE POINT

MAGNAIL 580' TO ϕ OF BRIDGE SN 095-006 OVER PLUM CREEK STA 1447+34.76



TIE POINT

MAGNAIL ϕ BRIDGE ϕ STA 1453+15.00



TIE POINT

MAGNAIL 585' FROM CENTER OF BRIDGE OVER PLUM CREEK ϕ STA 1459+00.00

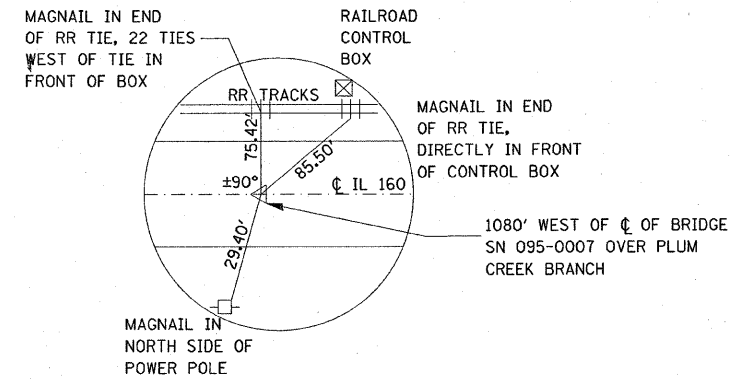
BENCHMARKS

BM 1 - RR SPIKE IN POWER POLE, (MIDDLE POLE OF 3) ϕ SE CORNER OF IL 160 & GOLDFINCH RD/RAILROAD RD STA 1445+90, 30' RT ELEVATION = 447.09

BM 2 - RR SPIKE IN POWER POLE ϕ THE SOUTH SIDE OF IL 160, \pm 400' EAST OF THE CENTER OF SN 095-0006 STA 1458+02, 32' RT ELEVATION = 444.48

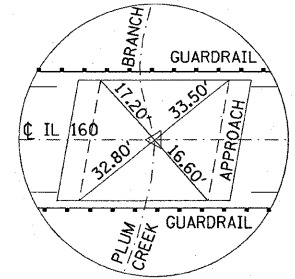
SN 095-0007(E) 0078(P)

NOTE: ALL TIES ARE DIRECT / SLOPE TAPED MEASUREMENTS



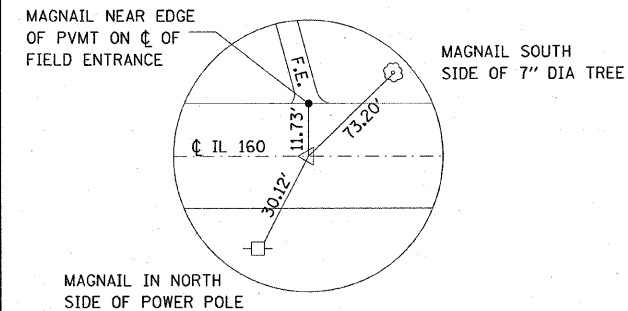
TIE POINT

MAGNAIL ϕ STATION EQUATION 1500+07.63 BACK TO SN 095-0006 = 1500+00.00 FORWARD TO SN 095-0007



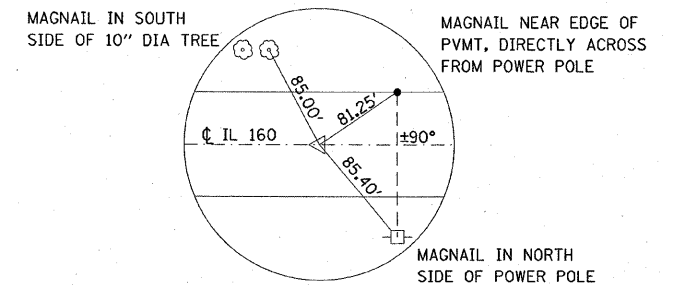
TIE POINT

MAGNAIL ϕ BRIDGE ϕ STA 1510.80.00



TIE POINT

MAGNAIL 580' FROM CENTER OF BRIDGE SN 095-0007 OVER PLUM CREEK BRANCH ϕ STA 1505+00.00



TIE POINT

MAGNAIL 610.5' EAST OF CENTER OF BRIDGE SN 095-0007 OVER PLUM CREEK BRANCH ϕ STA 1516+90.54

BENCHMARKS

BM 4 - RR SPIKE IN POWER POLE, (NEAR SE CORNER OF CULTIVATED FIELD), \pm 250' WEST OF NS 095-0007, \pm 175' SOUTH OF IL 160 STA 1506+77.8, 30' RT ELEVATION = 451.13

BM 6 - RR SPIKE IN POWER POLE, ϕ SW CORNER OF IL 160 & PLUM HILL CHURCH RD / HUMMINGBIRD RD STA 1520+20, 30' RT ELEVATION = 453.68

BM 5 - CHISELED " " ON BRIDGE ABUTMENT ϕ NW CORNER OF SN 095-0007 STA 1510+84.7, 18.4' LT ELEVATION = 445.50

REVISIONS		ILLINOIS DEPARTMENT OF TRANSPORTATION TIES & BENCHMARKS FAS ROUTE 1832 SECTION 5BR-2 WASHINGTON COUNTY
NAME	DATE	
		SCALE: VERT. HORIZ. DATE

DRAWN BY
CHECKED BY