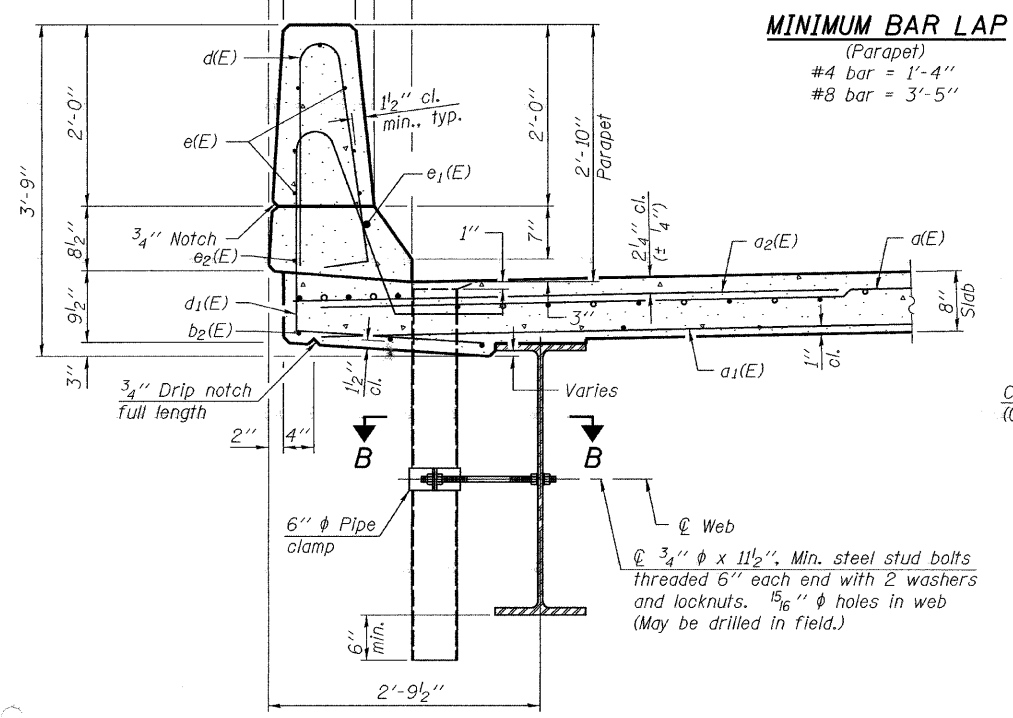
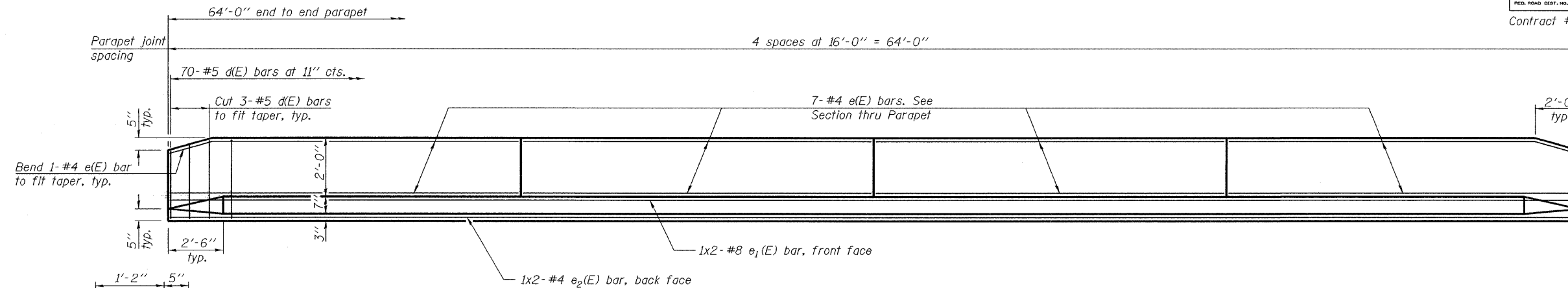


STATE OF ILLINOIS
DEPARTMENT OF TRANSPORTATION

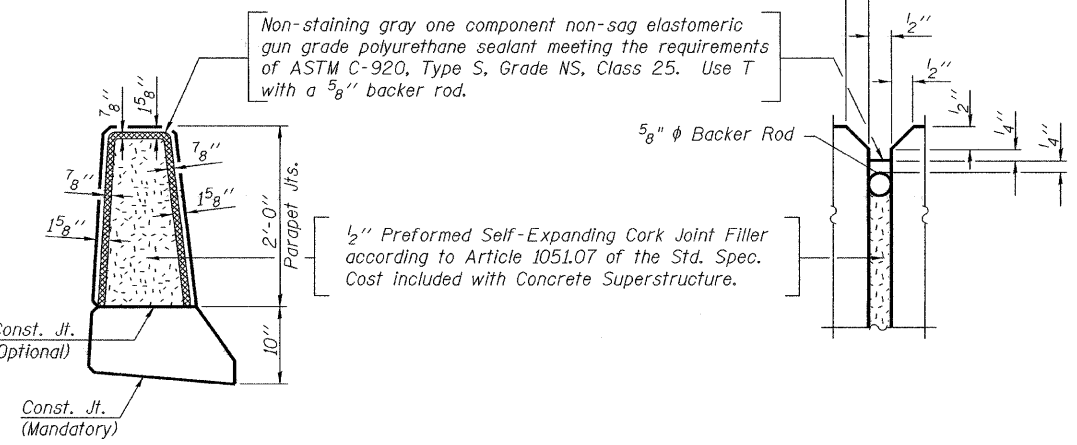
ROUTE NO.	SECTION	COUNTY	TOTAL SHEETS	SHEET	SHEET NO.
F.A.S. 1832	5BR-2	WASHINGTON	97	35	9
FED. ROAD DIST. NO. 7		ILLINOIS	FED. AID PROJECT-		

Contract #76949



MINIMUM BAR LAP
(Parapet)
#4 bar = 1'-4"
#8 bar = 3'-5"

INSIDE ELEVATION OF PARAPET



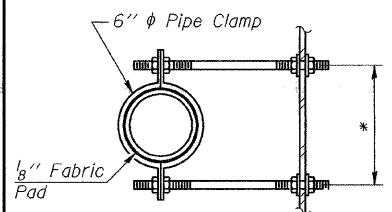
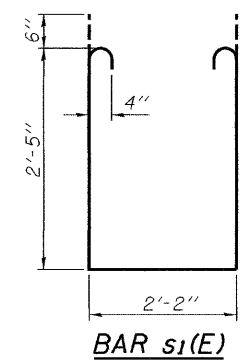
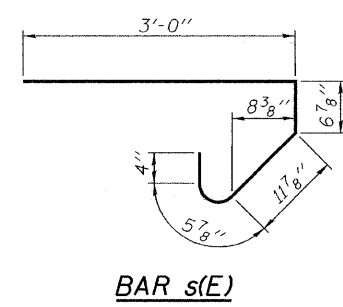
PARAPET JOINT DETAILS

Notes:
The exterior surfaces of the floor drains shall be painted with the finish coat as specified in the special provisions for Cleaning and Painting New Metal Structures. The exterior surfaces of the drains shall be cleaned according to Steel Structures Painting Council's Spec. SSPC-SPI prior to painting. Fiberglass pipe shall conform to ASTM D 2996, with short-time rupture strength hoop tensile stress of 30,000 p.s.i. minimum.

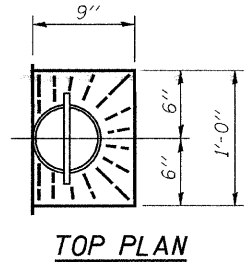
SUPERSTRUCTURE BILL OF MATERIAL

Bar	No.	Size	Length	Shape
a(E)	220	#5	17'-1"	—
a1(E)	154	#5	16'-3"	—
a2(E)	220	#6	6'-0"	—
b(E)	76	#5	32'-11"	—
b1(E)	96	#5	22'-8"	—
d(E)	140	#5	5'-7"	—
d1(E)	140	#5	7'-6"	—
e(E)	56	#4	15'-9"	—
e1(E)	4	#8	33'-7"	—
e2(E)	4	#4	32'-6"	—
m(E)	8	#6	16'-5"	—
m1(E)	12	#6	17'-3"	—
m2(E)	24	#6	7'-7"	—
m3(E)	8	#6	2'-7"	—
m4(E)	8	#6	5'-8"	—
s(E)	72	#5	5'-5"	—
s1(E)	64	#4	8'-0"	—
v(E)	68	#5	3'-4"	—
Reinforcement Bars, Epoxy Coated		Pound	18200	
Concrete Superstructure		Cu. Yds.	88.1	

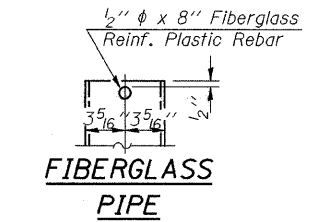
Bars indicated thus 1 x 2-#8 etc. indicates 1 line of bars with 2 lengths per line.



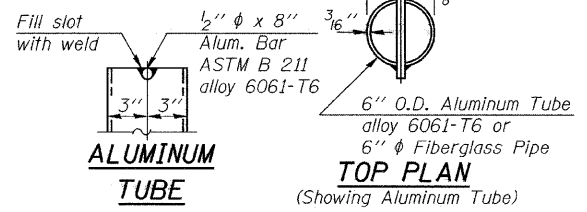
SECTION B-B
* Dimension as required by Pipe Clamp



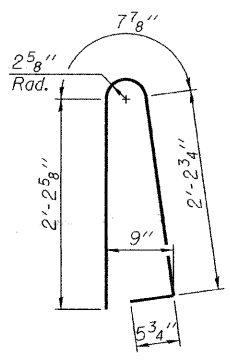
TOP PLAN



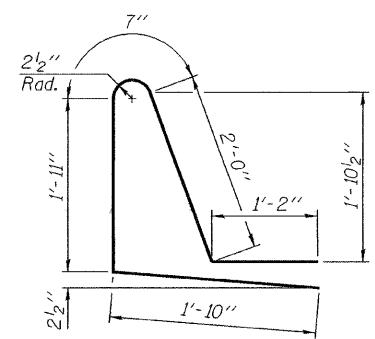
FIBERGLASS PIPE



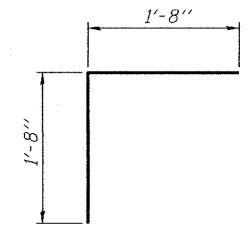
ALUMINUM TUBE



BAR d(E)



BAR d1(E)



BAR v(E)

SUPERSTRUCTURE DETAILS
F.A.S. RTE. 1832 - SEC. 5BR-2
WASHINGTON COUNTY
STATION 1453+11.50
STRUCTURE NO. 095-0077

DESIGNED	Phillip R. Litchfield
CHECKED	Nicholas R. Barnett
DRAWN	Gregory D. Farmer
CHECKED	PRL/NRB

January 28, 2008
EXAMINED *Thomas J. Donagale*
PASSED *Ralph E. Anderson*
ENGINEER OF BRIDGES AND STRUCTURES