

F.A.S. RTE.	SECTION	COUNTY	TOTAL SHEETS	SHEET NO.
1780	27-1BR-1	CLINTON	69	2
STA.		TO STA.		
FED. ROAD DIST. NO.		ILLINOIS	FED. AID PROJECT	

INDEX OF SHEETS

1	COVER SHEET
2	INDEX OF SHEETS, HIGHWAY STANDARDS, GENERAL NOTES & COMMITMENTS
3-4	SUMMARY OF QUANTITIES
5-6	TYPICAL SECTIONS
7	SCHEDULES OF QUANTITIES
8	TIE POINTS & BENCHMARKS
* 9-12	PLAN AND PROFILE SHEETS
13	DETOUR SIGNING
14-15	STORM WATER POLLUTION PREVENTION PLAN
16-19	EROSION CONTROL
20-21	PLAT OF HIGHWAYS
22	MISCELLANEOUS DETAILS
23-25	PAVEMENT MARKING SHEETS
26-52	BRIDGE PLANS
53-59	EXISTING STRUCTURE PLANS
60-69	MAINLINE CROSS SECTIONS

△ * ADDED SHEET 10A.

GENERAL NOTES:

- THE STANDARDS AND REVISION NUMBERS SHALL APPLY TO THIS PROJECT.
- THE CONTRACTOR SHALL VERIFY ALL DIMENSIONS AND CONDITIONS IN THE FIELD PRIOR TO CONSTRUCTION AND ORDERING MATERIALS.
- ILLINOIS STATE LAW REQUIRES A 48-HOUR NOTICE BE GIVEN TO UTILITIES WITHIN THE PROJECT AREA BEFORE DIGGING BY CALLING J.U.L.I.E. AND BY NOTIFYING NON-J.U.L.I.E. MEMBERS INDIVIDUALLY. AGENCIES KNOWN TO HAVE FACILITIES WITHIN THE PROJECT AREA ARE AS FOLLOWS:
 - AMERENIP
 - VILLAGE OF AVISTON
 - CHARTER COMMUNICATIONS, INC.
 - CLINTON COUNTY ELECTRIC COOPERATIVE
 - QWEST COMMUNICATIONS
 - SBC
 - TRI-TOWNSHIP WATER DISTRICT
 MEMBERS OF J.U.L.I.E. (800) 892-0123 OR 811 ARE INDICATED BY *. NON-MEMBERS MUST BE NOTIFIED INDIVIDUALLY.
- RIGHT OF WAY MARKERS SHALL BE SET SO THE BACK OF THE POST IS TWELVE INCHES (12") INSIDE THE RIGHT OF WAY BOUNDARY. RIGHT OF WAY PROPERTY CORNERS ARE MARKED BY A 5/8" IRON ROD WITH IDOT ALUMINUM CAP AND SHALL NOT BE REMOVED OR DAMAGED WHEN SETTING THE RIGHT OF WAY MARKERS.
- "ROAD CLOSED AHEAD" SIGNS SHALL BE PLACED AT THE BEGINNING AND ENDING OF THE PROJECT AND ALL INTERSECTING SIDE ROADS AND WILL BE INCLUDED IN THE TRAFFIC CONTROL PAY ITEMS. ALL CONSTRUCTION SIGNS SHALL BE FLOURESCENT ORANGE, 48".
- ANY DAMAGE TO SIGNS CAUSED BY CONSTRUCTION ACTIVITIES SHALL BE REPLACED AT THE CONTRACTOR'S EXPENSE.
- ROCK JETTIES WILL BE PLACED IN THE CHANNEL TO HELP RE-ALIGN THE CREEK NATURALLY. NO CHANNEL WORK SHALL BE PERFORMED OUTSIDE OF THE PLACEMENT OF THE JETTIES AND RIPRAP UNDER THE STRUCTURE.
- MESSAGE BOARDS WILL BE USED ON OLD AND NEW US 50 FOR LOCAL TRAFFIC. LOCATION OF THESE MESSAGE BOARDS SHALL BE DETERMINED BY THE RESIDENT ENGINEER. A QUANTITY OF FOUR (4) CALENDAR MONTHS WAS ASSUMED.

NONE

COMMITMENTS

PERTINENT INFORMATION

THE VILLAGE OF AVISTON SHALL BE INFORMED 2 WEEKS PRIOR TO CLOSURE AND IMPLEMENTATION OF THE ROADWAY DETOUR.

CONTACT JENNIFER JANSEN, VILLAGE CLERK OR CHARLES RAKERS, VILLAGE PRESIDENT (618) 228-7262

HIGHWAY STANDARDS

000001-05	630001-07	667101
280001-04	630301-04	701306-01
420401-06	631031-06	701311-02
515001-02	635006-02	701901
542401	635011-01	780001-01
609006-03	666001	781001-02
		BLR 21-7

REVISIONS	
NAME	DATE

ILLINOIS DEPARTMENT OF TRANSPORTATION
INDEX OF SHEETS, HIGHWAY STANDARDS, GENERAL NOTES AND COMMITMENTS
 FAS ROUTE 1780
 SECTION 27-1BR-1
 CLINTON COUNTY
 SN 014-0030 (E) 0077 (P)

△ Rev. 2-26-08

SUMMARY OF QUANTITIES

F.A.S. RTE.	SECTION	COUNTY	TOTAL SHEETS	SHEET NO.
1780	27-1BR-1	CLINTON	69	3
STA.		TO STA.		
FED. ROAD DIST. NO.		ILLINOIS	FED. AID PROJECT	

SUMMARY OF QUANTITIES			CONSTRUCTION TYPE CODE	
CODE NO	ITEM	UNIT	TOTAL QUANTITIES	X071-2A 80% FED. 20% STATE
20100500	TREE REMOVAL, ACRES	ACRE	0.25	0.25
20200100	EARTH EXCAVATION	CU YD	235	235
20300100	CHANNEL EXCAVATION	CU YD	6,550	6,550
20400800	FURNISHED EXCAVATION	CU YD	5035	5035
20700400	POROUS GRANULAR EMBANKMENT, SPECIAL	CU YD	133	133
25000200	SEEDING, CLASS 2	ACRE	2	2
25000400	NITROGEN FERTILIZER NUTRIENT	POUND	225	225
25000500	PHOSPHORUS FERTILIZER NUTRIENT	POUND	225	225
25000600	POTASSIUM FERTILIZER NUTRIENT	POUND	225	225
25100115	MULCH, METHOD 2	ACRE	2	2
25100630	EROSION CONTROL BLANKET	SQ YD	3880	3880
28000250	TEMPORARY EROSION CONTROL SEEDING	POUND	600	600
28000300	TEMPORARY DITCH CHECKS	EACH	2	2
28000400	PERIMETER EROSION BARRIER	FOOT	3260	3260
28000500	INLET AND PIPE PROTECTION	EACH	4	4
28100105	STONE RIPRAP, CLASS A3	SQ YD	32	32
28100109	STONE RIPRAP, CLASS A5	SQ YD	2571	2571
28100809	STONE DUMPED RIPRAP, CLASS A5	TON	704	704
28200200	FILTER FABRIC	SQ YD	2890	2890
40600200	BITUMINOUS MATERIALS (PRIME COAT)	TON	0.4	0.4
40600300	AGGREGATE (PRIME COAT)	TON	2	2
40600982	HOT-MIX ASPHALT SURFACE REMOVAL - BUTT JOINT	SQ YD	578	578
40603085	HOT-MIX ASPHALT BINDER COURSE, IL-19.0, N70	TON	169	169
40603315	HOT-MIX ASPHALT SURFACE COURSE, MIX "C", N70	TON	99	99
42001165	BRIDGE APPROACH PAVEMENT	SQ YD	214	214
42001430	BRIDGE APPROACH PAVEMENT CONNECTOR (FLEXIBLE)	SQ YD	107	107
44000100	PAVEMENT REMOVAL	SQ YD	971	971
44004250	PAVED SHOULDER REMOVAL	SQ YD	34	34
48100500	AGGREGATE SHOULDERS, TYPE A 6"	SQ YD	443	443
48203029	HOT-MIX ASPHALT SHOULDERS, 8"	SQ YD	271	271
50100100	REMOVAL OF EXISTING STRUCTURES	EACH	1	1
50200100	STRUCTURE EXCAVATION	CU YD	214	214
50200300	COFFERDAM EXCAVATION	CU YD	498	498
50200700	COFFERDAMS (PIER 2)	EACH	1	1
50200800	COFFERDAMS (PIER 3)	EACH	1	1
50300100	FLOOR DRAINS	EACH	32	32
50300225	CONCRETE STRUCTURES	CU YD	348	348

SUMMARY OF QUANTITIES			CONSTRUCTION TYPE CODE	
CODE NO	ITEM	UNIT	TOTAL QUANTITIES	X071-2A 80% FED. 20% STATE
50300255	CONCRETE SUPERSTRUCTURE	CU YD	456.5	456.5
50300260	BRIDGE DECK GROOVING	SQ YD	1340	1340
50300265	SEAL COAT CONCRETE	CU YD	108.1	108.1
50300280	CONCRETE ENCASEMENT	CU YD	13	13
50300300	PROTECTIVE COAT	SQ YD	1685	1685
50500105	FURNISHING AND ERECTING STRUCTURAL STEEL	L SUM	1	1
50500505	STUD SHEAR CONNECTORS	EACH	6228	6228
50800205	REINFORCEMENT BARS, EPOXY COATED	POUND	149930	149930
50800515	BAR SPLICERS	EACH	64	64
51201600	FURNISHING STEEL PILES HP12X53	FOOT	495	495
51201800	FURNISHING STEEL PILES HP14X73	FOOT	735	735
51201900	FURNISHING STEEL PILES HP14X89	FOOT	875	875
51202305	DRIVING PILES	FOOT	2105	2105
51203600	TEST PILE STEEL HP12X53	EACH	2	2
51203800	TEST PILE STEEL HP14X73	EACH	2	2
51203900	TEST PILE STEEL HP14X89	EACH	2	2
51500100	NAME PLATES	EACH	1	1
52100520	ANCHOR BOLTS, 1"	EACH	72	72
54215547	METAL END SECTIONS 12"	EACH	4	4
59100100	GEOCOMPOSITE WALL DRAIN	SQ YD	83	83
60100945	PIPE DRAINS 12"	FOOT	179	179
60109580	PIPE UNDERDRAINS FOR STRUCTURES 4"	FOOT	138	138
60900150	TYPE B INLET BOX, STANDARD 609006 (SPECIAL)	EACH	4	4
60900515	CONCRETE THRUST BLOCKS	EACH	4	4
* 63000000	STEEL PLATE BEAM GUARD RAIL, TYPE A	FOOT	1875	1875
* 63100085	TRAFFIC BARRIER TERMINAL, TYPE 6	EACH	4	4
63100167	TRAFFIC BARRIER TERMINAL, TYPE 1 (SPECIAL) TANGENT	EACH	4	4
63200310	GUARDRAIL REMOVAL	FOOT	3950	3950
66600105	FURNISHING AND ERECTING RIGHT-OF-WAY MARKERS	EACH	13	13
66700305	PERMANENT SURVEY MARKERS, TYPE II	EACH	6	6
67000400	ENGINEER'S FIELD OFFICE, TYPE A	CAL MO	12	12
67100100	MOBILIZATION	L SUM	1	1
70100460	TRAFFIC CONTROL AND PROTECTION, STANDARD 701306	L SUM	1	1
70101830	TRAFFIC CONTROL AND PROTECTION, STANDARD BLR 21	L SUM	1	1

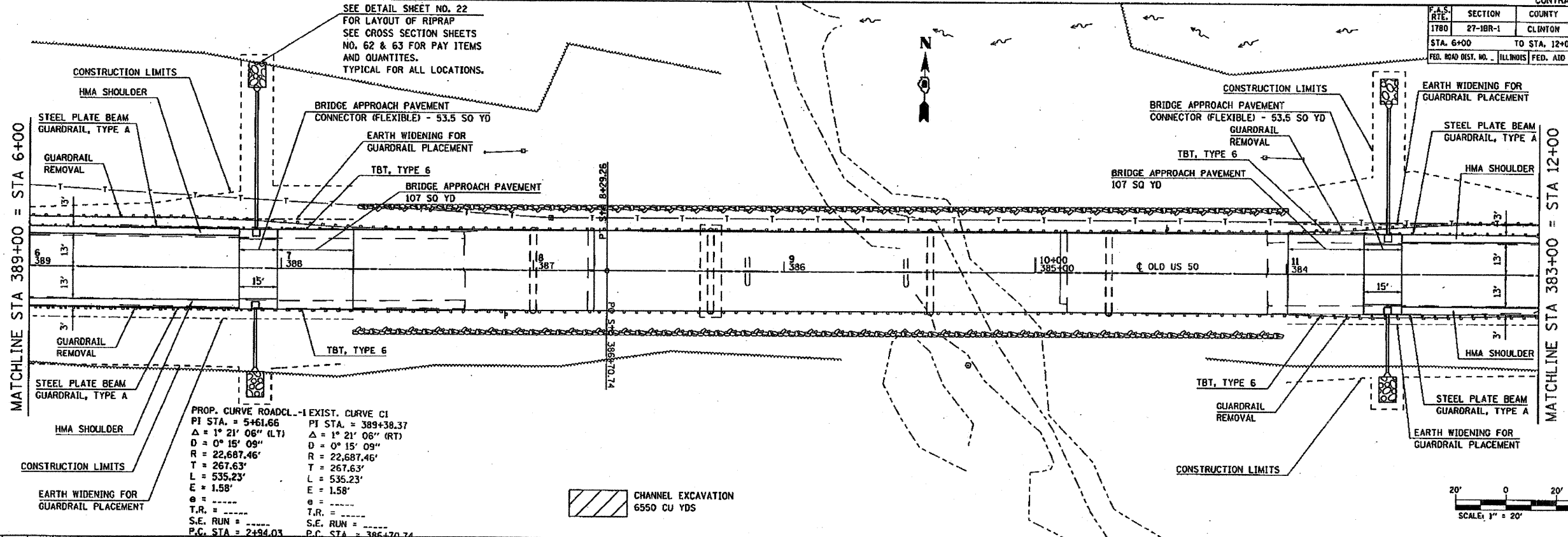
*SPECIALTY ITEMS

Rev.

PLT DATE = 12/11/2007
 FILE NAME = I:\11\12007\11111111.dwg
 PLOT SCALE = 1/8" = 1'-0"
 REFERENCE = #REF#

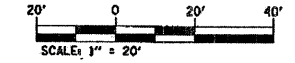
F.A.S. RTE.	SECTION	COUNTY	TOTAL SHEETS	SHEET NO.
178D	27-1BR-1	CLINTON	69	10A
STA. 6+00		TO STA. 12+00		
FED. ROAD DIST. NO. ILLINOIS FED. AID PROJECT				

SEE DETAIL SHEET NO. 22 FOR LAYOUT OF RIPRAP SEE CROSS SECTION SHEETS NO. 62 & 63 FOR PAY ITEMS AND QUANTITIES. TYPICAL FOR ALL LOCATIONS.



PROP. CURVE ROADCL.-1 EXIST. CURVE C1
 P.I. STA. = 5+61.66 P.T. STA. = 389+38.37
 $\Delta = 1^\circ 21' 06''$ (L.T.) $\Delta = 1^\circ 21' 06''$ (RT)
 $D = 0^\circ 15' 09''$ $D = 0^\circ 15' 09''$
 $R = 22,687.46'$ $R = 22,687.46'$
 $T = 267.63'$ $T = 267.63'$
 $L = 535.23'$ $L = 535.23'$
 $E = 1.58'$ $E = 1.58'$
 $\theta = \dots$
 $T.R. = \dots$ $T.R. = \dots$
 $S.E. RUN = \dots$ $S.E. RUN = \dots$
 $P.C. STA. = 2+94.03$ $P.C. STA. = 386+70.74$

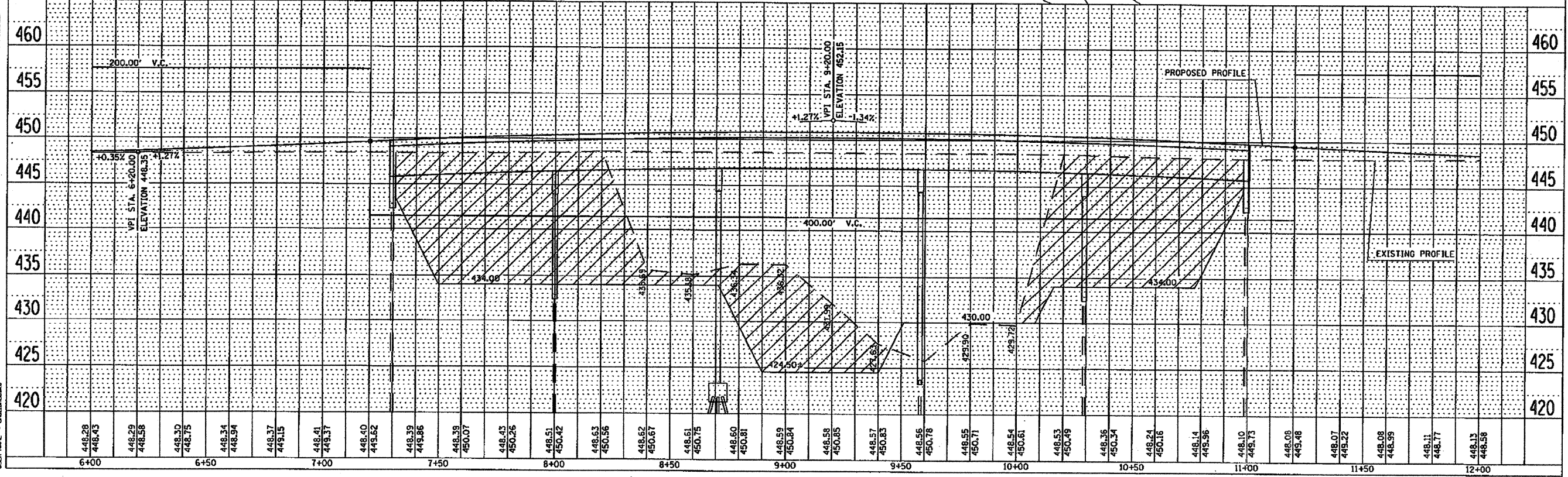
CHANNEL EXCAVATION
6550 CU YDS



DATE	
BY	
REVISION	
NO.	
DESCRIPTION	
DATE	
BY	
REVISION	
NO.	
DESCRIPTION	
DATE	
BY	
REVISION	
NO.	
DESCRIPTION	

DATE	
BY	
REVISION	
NO.	
DESCRIPTION	
DATE	
BY	
REVISION	
NO.	
DESCRIPTION	

PLOT DATE = 2/25/2008
 PLOT SCALE = 4:850" = 1" = 20'
 USER NAME = chaitanika



Added sheet 2-26-08