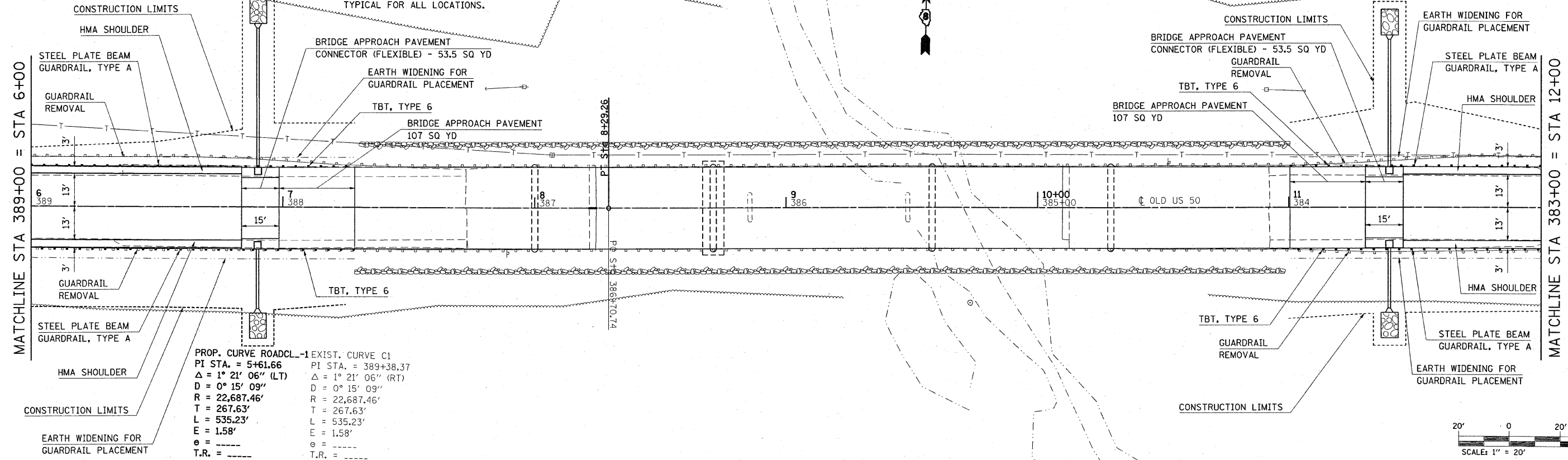
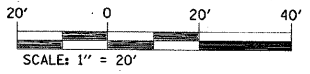


F.A.S. RTE.	SECTION	COUNTY	TOTAL SHEETS	SHEET NO.
1780	27-1BR-1	CLINTON	69	10
STA. 6+00		TO STA. 12+00		
FED. ROAD DIST. NO.		ILLINOIS FED. AID PROJECT		

SEE DETAIL SHEET NO. 22 FOR LAYOUT OF RIPRAP SEE CROSS SECTION SHEETS NO. 62 & 63 FOR PAY ITEMS AND QUANTITIES. TYPICAL FOR ALL LOCATIONS.

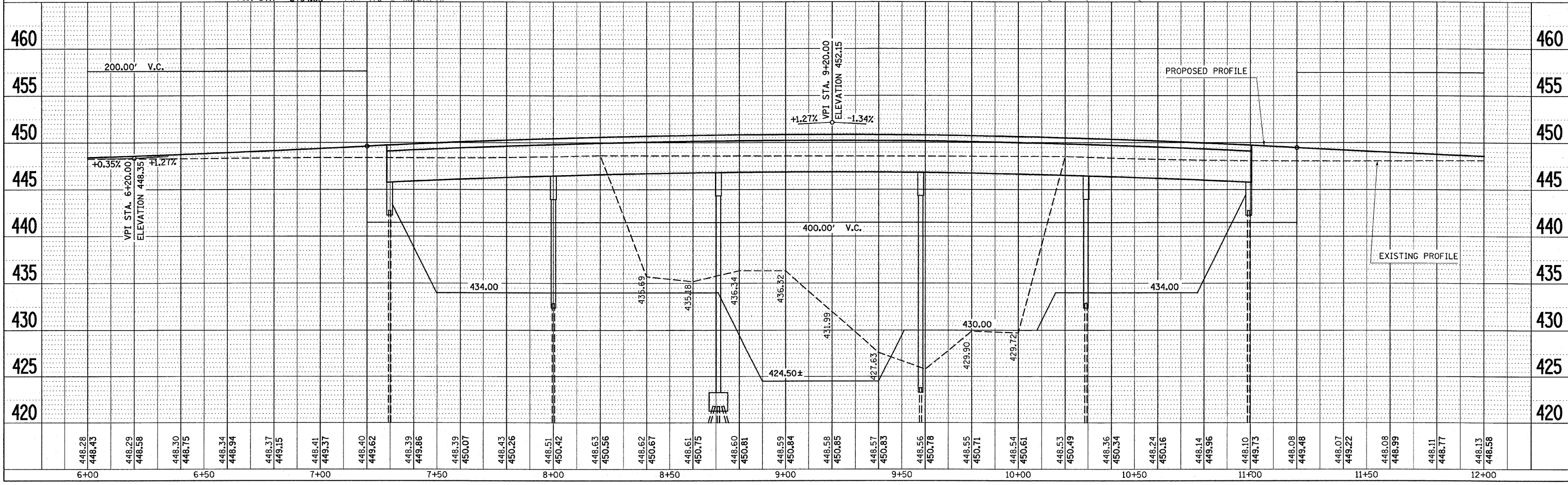


PROP. CURVE ROADCL-1	EXIST. CURVE C1
PI STA. = 5+61.66	PI STA. = 389+38.37
$\Delta = 1^\circ 21' 06''$ (LT)	$\Delta = 1^\circ 21' 06''$ (RT)
D = 0° 15' 09"	D = 0° 15' 09"
R = 22,687.46'	R = 22,687.46'
T = 267.63'	T = 267.63'
L = 535.23'	L = 535.23'
E = 1.58'	E = 1.58'
$\theta =$ -----	$\theta =$ -----
T.R. = -----	T.R. = -----
S.E. RUN = -----	S.E. RUN = -----
P.C. STA = 2+94.03	P.C. STA = 386+170.74



PLAN	SURVEYED	DATE
	BY	
	PLOTTED	
	CHECKED	
	BY	
	NOTE BOOK	
	NO.	
	FILE NAME	
	NO.	

PROFILE	SURVEYED	DATE
	BY	
	PLOTTED	
	CHECKED	
	BY	
	NOTE BOOK	
	NO.	
	FILE NAME	
	NO.	



PLOT DATE = #DATE#  
 FILE NAME = #FILE#  
 PLOT SCALE = #SCALE#  
 USER NAME = #USER#