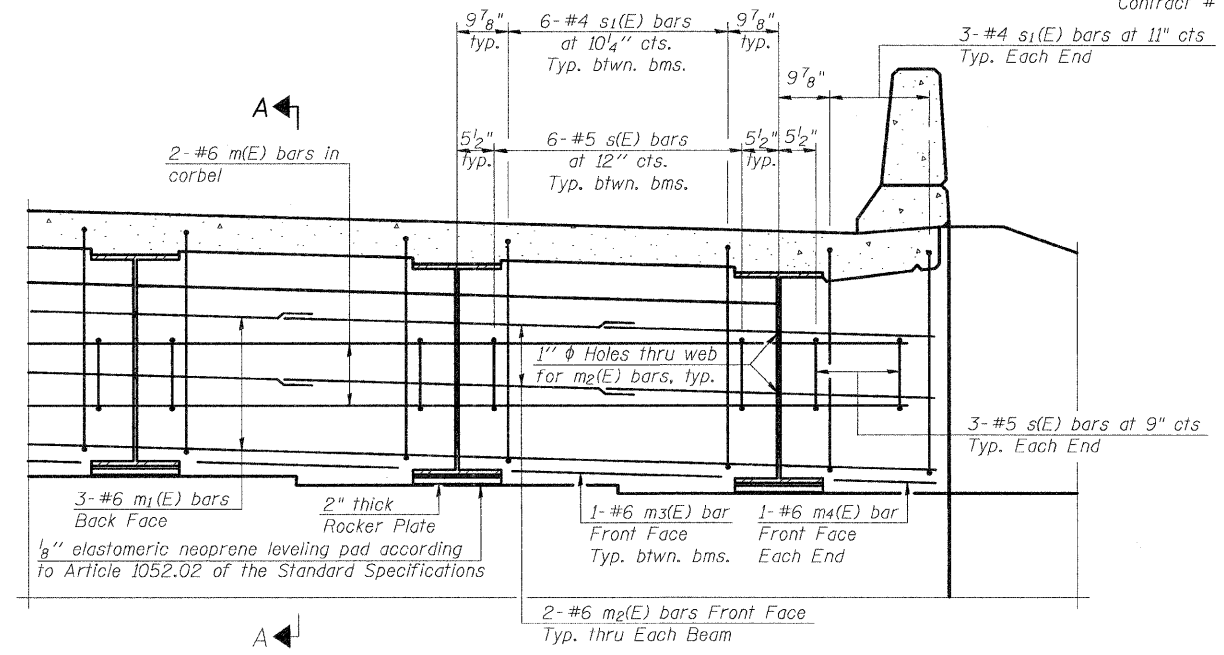


12/14/2007 11:59:36 AM

p:\02files\020409\02-0409.028 wo 17 bridge plans\bridge plans\014-0077_12-AbutmentDiagrams.dwg

ROUTE NO.	SECTION	COUNTY	TOTAL SHEETS	SHEET NO.	SHEET NO. 12 27 SHEETS
F.A.S. 1780	27- 1BR-1	CLINTON	37	37	
FED. ROAD DIST. NO. 8	ILLINOIS	FED. AID PROJECT			

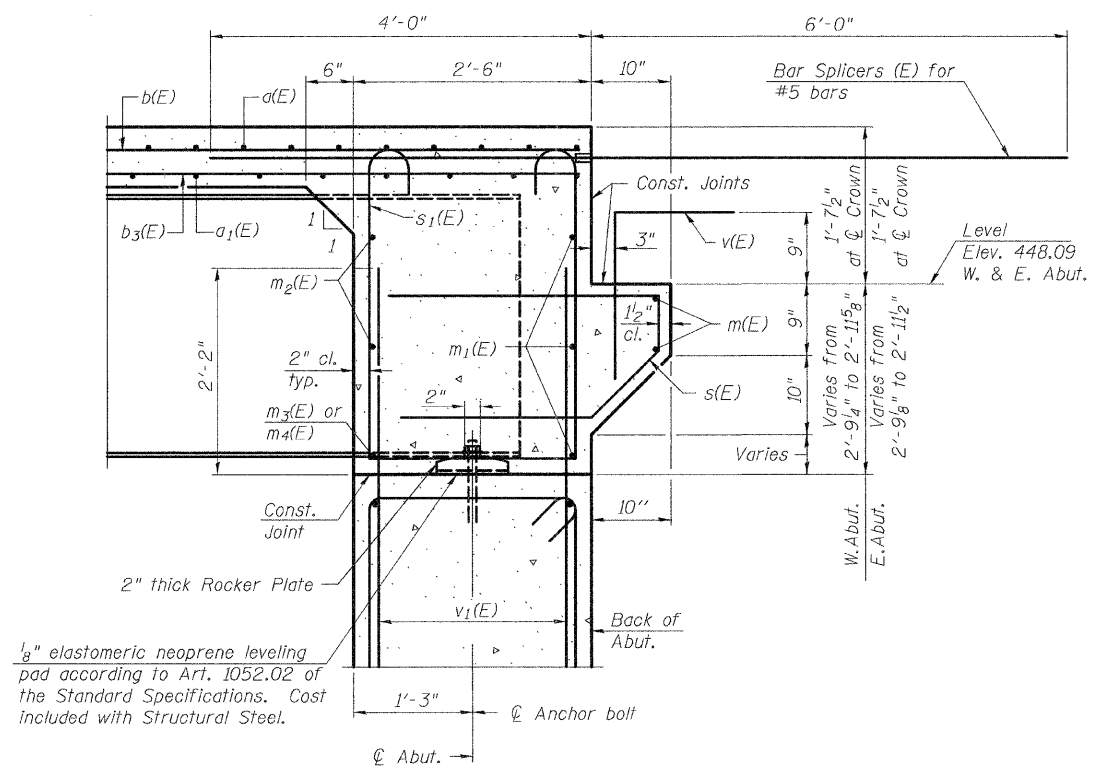
Contract # 76961



DIAPHRAGM ELEVATION AT ABUTMENT

Notes:
 Reinforcement bars in diaphragm are billed with superstructure on sheet 11 of 27.
 Concrete in diaphragm is included with Concrete Superstructure on sheet 11 of 27.
 For details of bars s(E) & s1(E) see sheet 11 of 27.
 The s(E) and s1(E) bars shall be placed parallel to the beams. Spacing for these bars shall be at right angles to the beams.

MIN. BAR LAP
 #6 bar = 2'-9"



SECTION A-A

Dimensions at right angles to abutment, except as shown.

ABUTMENT DIAPHRAGMS
 FAS RTE 1780 (OLD US 50) OVER
 SUGAR CREEK
 SECTION 27-1BR-1
 CLINTON COUNTY
 STATION 9+14.50
 STRUCTURE NUMBER 014-0077

DESIGNED	ADL
CHECKED	WLW
DRAWN	BGJ
CHECKED	WLW
SI-DS1	

11-1-06