

12/28/2007 11:51:25 AM

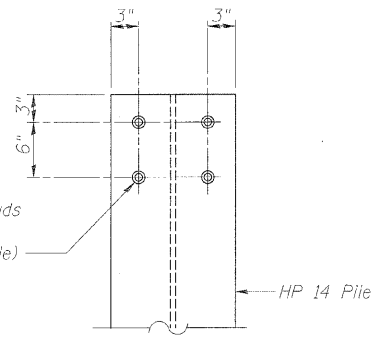
p:\02f\les\020409\02-0409.028 W0 17 B-ridge Plans\Bridg Plans\014-0077-21-Pier-2\Details.dgn

ROUTE NO.	SECTION	COUNTY	TOTAL SHEETS	SHEET NO.	SHEET NO. 21
F.A.S. 1780	27-1BR-1	CLINTON	69	40	27 SHEETS
FED. ROAD DIST. NO. B	ILLINOIS	FED. AID PROJECT			

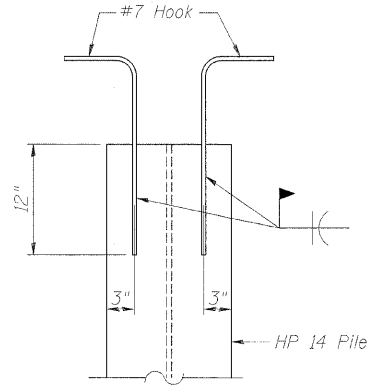
Contract # 76961

Note: Work this sheet with sheet 20 of 27.

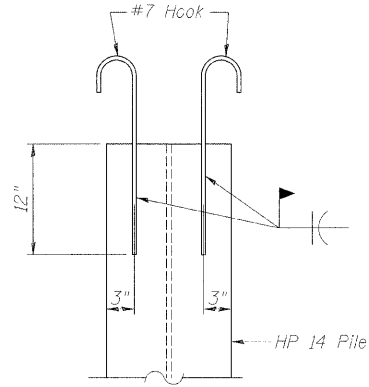
4-3/4" φ x 4" Granular or solid flux filled headed studs automatically end welded (Typ. each flange, each pile)



OPTION A

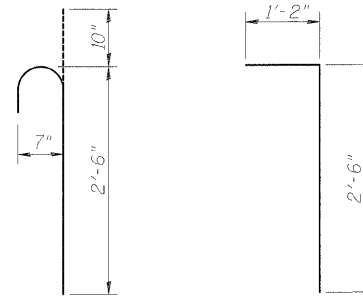


OPTION B



OPTION C

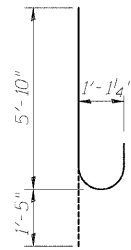
TOP OF PILE DETAILS  
Cost included with driving piles



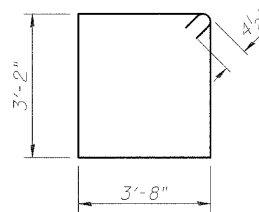
#7 HOOK BAR FOR OPTION B & C

BILL OF MATERIAL

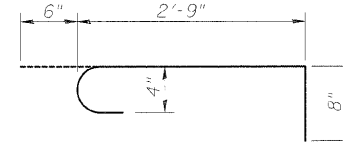
Bar	No.	Size	Length	Shape
h <sub>3</sub> (E)	18	#6	25'-11"	—
h <sub>4</sub> (E)	32	#6	31'-7"	—
n(E)	118	#10	7'-3"	U
p <sub>2</sub> (E)	10	#7	31'-7"	—
s <sub>5</sub> (E)	33	#4	14'-5"	□
s <sub>6</sub> (E)	160	#4	3'-11"	U
t(E)	42	#10	10'-4"	—
t <sub>1</sub> (E)	38	#7	10'-4"	—
u <sub>3</sub> (F)	50	#6	9'-10"	U
u <sub>4</sub> (E)	8	#6	11'-5"	U
v <sub>4</sub> (E)	118	#10	18'-6"	—
w(E)	23	#5	37'-0"	—
Cofferdam Excavation		Cu. Yd.	404	
Cofferdam (Pier 2)		Each	1	
Seal Coat Concrete		Cu. Yd.	76.8	
Concrete Structures		Cu. Yd.	152.5	
Reinforcement Bars, Epoxy Coated		Pound	21,110	
Test Pile Steel				
HP14x89		Each	1	
Furnishing Steel Piles HP14x89		Foot	476	
Driving Piles		Foot	476	
Mechanical Splice		Each	154	



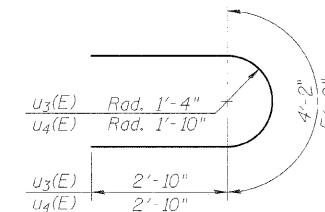
BAR n(E)



BAR s<sub>5</sub>(E)



BAR s<sub>6</sub>(E)



BARS u<sub>3</sub>(E) & u<sub>4</sub>(E)

DESIGNED	ADL
CHECKED	WLW
DRAWN	BGJ
CHECKED	WLW

PIER #2 DETAILS  
FAS RTE 1780 (OLD US 50) OVER  
SUGAR CREEK  
SECTION 27-1BR-1  
CLINTON COUNTY  
STATION 9+14.50  
STRUCTURE NUMBER 014-0077

Klingner & Assoc., P.C.