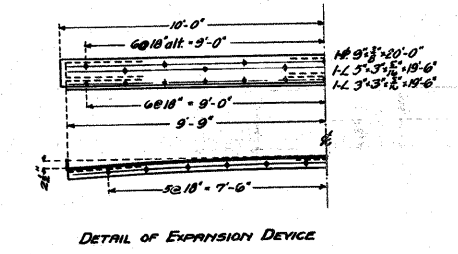
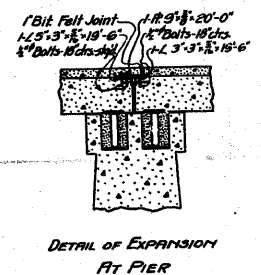
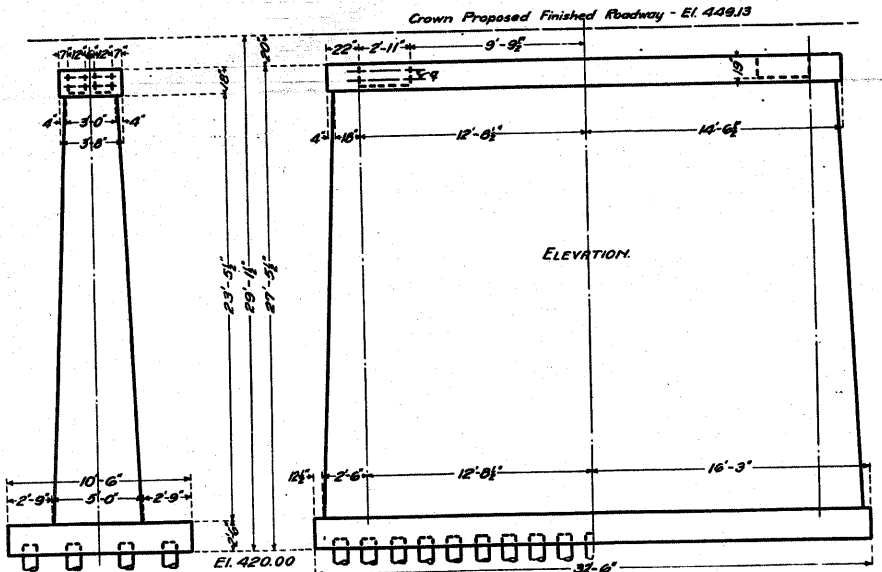
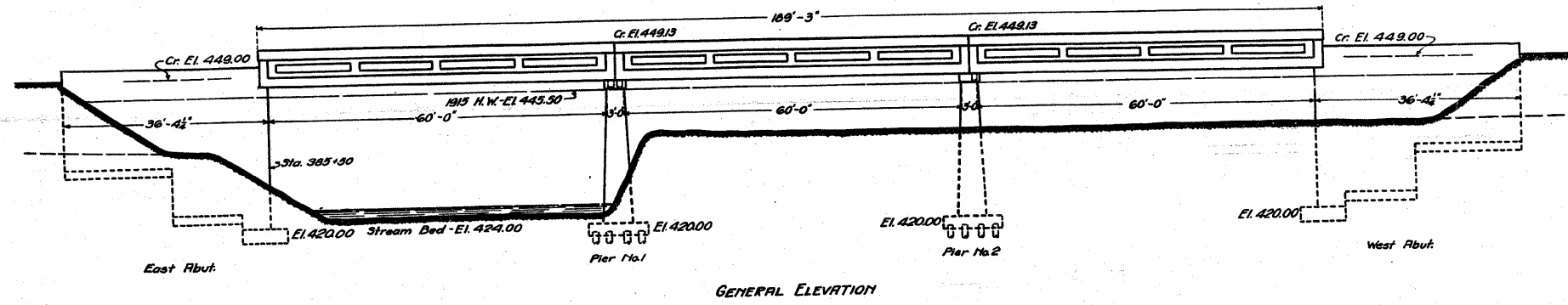


STATE	PROJ. NO.	YEAR	SHEET NO.	TOTAL SHEETS
ILL.	34	1923	23	26

SHEET No. 1  
3 SHEETS

STATE OF ILLINOIS  
DEPARTMENT OF PUBLIC WORKS & BUILDINGS  
DIVISION OF HIGHWAYS



BILL OF MATERIAL - 2 PIERS

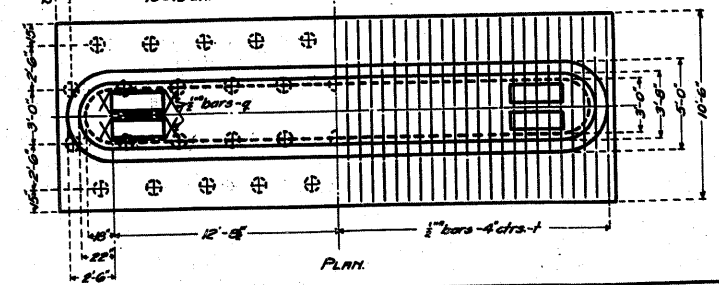
Bars	No.	Size	Length
f	188	1/2"	10'-0"
g	24	1/2"	5'-6"
Steel - lbs.			1710
Concrete - cu. yds.			272.8

Class B Concrete to be used thruout. Prop. 1:3:5

TOTAL BILL OF MATERIAL

Superstructure Reinforcing Steel - lbs.	99300
Abutment Reinforcing Steel - lbs.	23100
Pier Reinforcing Steel - lbs.	1710
Total Reinforcing Steel - lbs.	124110
Superstructure Concrete - Class A - cu. yds.	409.5
Abutment Concrete - Class A - cu. yds.	285.5
Pier Concrete - Class B - cu. yds.	272.8
Total Class A Concrete - cu. yds.	695.0
Total Concrete - cu. yds.	967.8
Rocks and Plates - lbs.	3909
Expansion Devices - lbs.	1050
Piles - 15 Ton - untreated	84

Note - Single Pockets in Pier 2 - Double Pockets in Pier 1.



COMPUTED	- A. H. Fenger
CHECKED	- A. H. Fenger
DRAWN	- A. H. F.
CHECKED	- A. H. G.
ASSEMBLED	
CHECKED	

EXAMINED: *[Signature]* MARCH 23, 1923  
BRIDGE ENGINEER  
PASSED: *[Signature]*  
ENGINEER OF DESIGN  
APPROVED: *[Signature]*  
CHIEF HIGHWAY ENGINEER

Sta. 385+83  
SECTION 27B - CLINTON Co.  
F.A. Proj. 34

FOR INFORMATION ONLY

REVISIONS	NAME	DATE

ILLINOIS DEPARTMENT OF TRANSPORTATION  
EXISTING STRUCTURE PLAN  
FAS ROUTE 1780  
SECTION 27-1BR-1  
CLINTON COUNTY  
SN 014-0030 (E) 0077 (P)