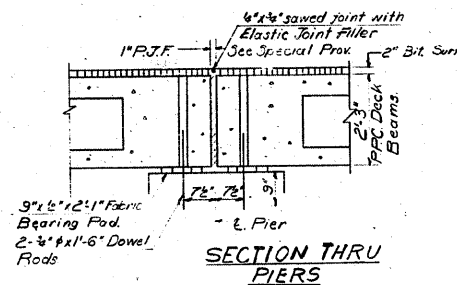
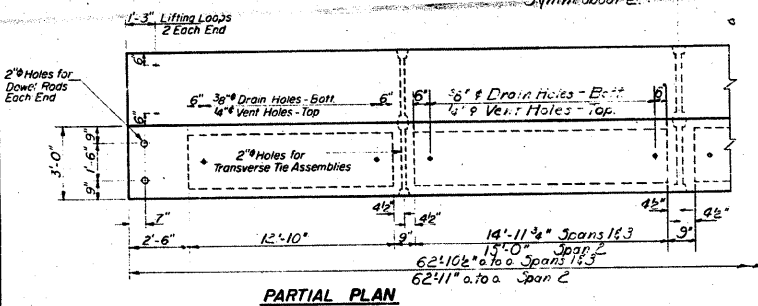
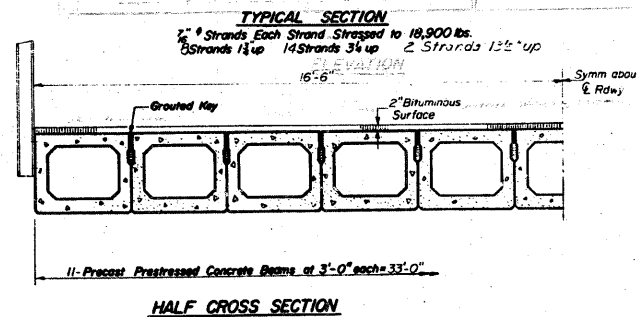
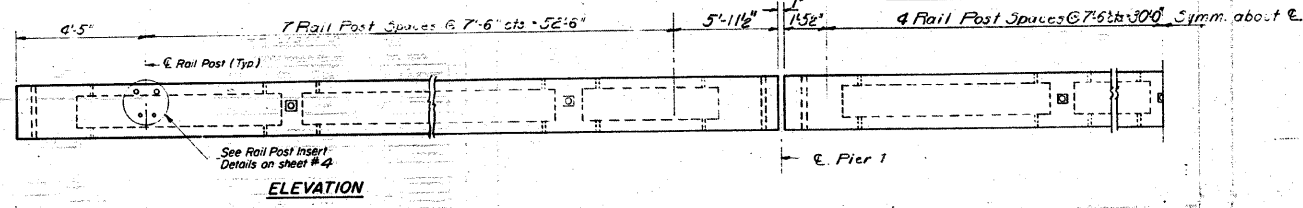
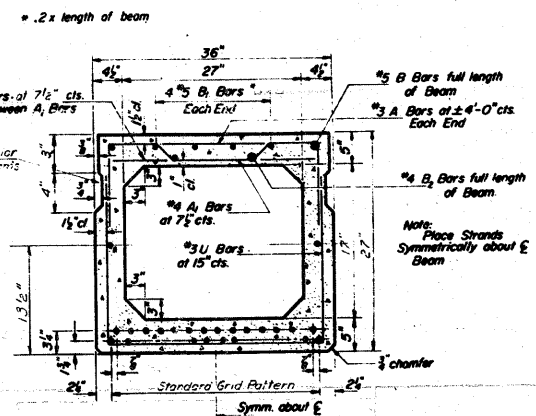
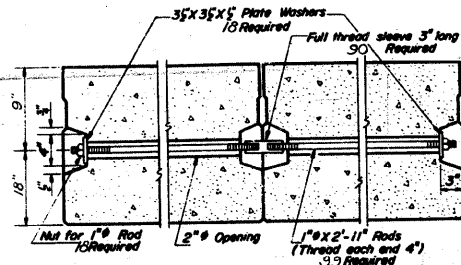
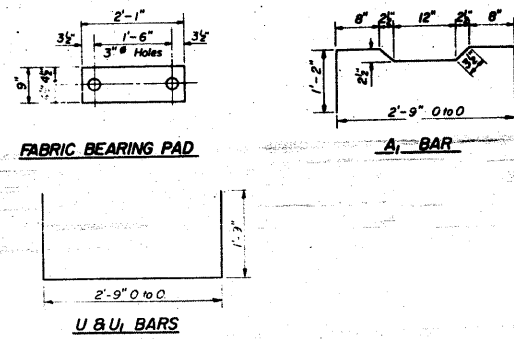


F.A.S. RTE.	SECTION	COUNTY	TOTAL SHEETS	SHEET NO.
1780	27-1BR-1	CLINTON	69	57
STA.		TO STA.		
FED. ROAD DIST. NO.		ILLINOIS FED. AID PROJECT		

STATE OF ILLINOIS  
DEPARTMENT OF PUBLIC WORKS & BUILDINGS  
DIVISION OF HIGHWAYS

PROJECT NO.	SECTION	COUNTY	SHEET NO.
11-12	27 BR	CLINTON	11 7
SHEETS			



**BILL OF MATERIAL**

Precast Prestressed Concrete Deck Beams (27)	Sq Ft	2225
Removal of Existing Superstructure	Each	1

**GENERAL NOTES**

Prestressing steel shall be non-galvanized high strength, stress-relieved 7-wire strand. The nominal diameter shall be 7/8" and the nominal cross-sectional area shall be 0.109 sq. in. Lifting loops shall be 3/8" diameter, 6 x 19 class wire rope with fiber core and shall have a minimum ultimate tensile strength of 35,000 lbs.

The 1" rods in the transverse tie assembly shall be tightened to a snug fit and the threads set. Pockets that receive transverse tie bar on outside beam shall be filled with grout after transverse tie assembly is in place.

Longitudinal shear keys shall be packed with a very dry mix of 2-1 sand and P.C. mortar. After beams have been erected, holes for dowel anchors shall be drilled into sub-structure. Grout dowels at fixed end. At expansion and grout dowels into sub-structure & fill holes in beam with SAE-4.

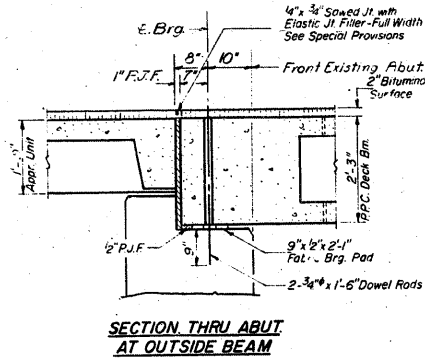
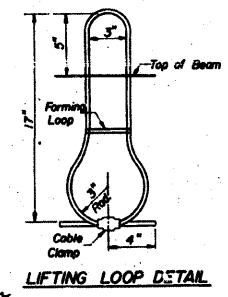
Steel for dowel rods, transverse tie rods, and armor angles shall be S.A.E. 1020, structural steel A.S.T.M. Designation: A36, or A.S.T.M. A306, Grade 70-80.

After fabrication the transverse tie assemblies (tie rods, nuts, washers and sleeves) shall be hot-dipped galvanized in accordance with A.S.T.M. Designation: A153.

Cost of reinforcement and accessories cast into the beam, of bearing pads, of armor angles, and of grouting longitudinal shear keys is included in unit price bid for "Precast Prestressed Concrete Deck Beams."

**SUPERSTRUCTURE**  
SBI RT. 12, SEC. 27 BR  
CLINTON COUNTY  
STATION 585+83

DESIGNED	James H. Hutter	EXAMINED	Jan 27 1970
CHECKED	James Hutter	PASSED	Richard H. Pottemann
DRAWN	J. L. Armstrong		
CHECKED	JH		



PD-3-S 11-19-65 Rev 5-20-69  
SR-5 27 P.P.C. Deck Bm

FOR INFORMATION ONLY

REVISIONS	
NAME	DATE

ILLINOIS DEPARTMENT OF TRANSPORTATION  
**EXISTING STRUCTURE PLAN**  
FAS ROUTE 1780  
SECTION 27-1BR-1  
CLINTON COUNTY  
SN 014-0030 (E) 0077 (P)