

F.A.P. RTE.	SECTION	COUNTY	TOTAL SHEETS	SHEET NO.
310	57BR-1	JERSEY	25	1
FED. ROAD DIST. NO.	ILLINOIS	CONTRACT NO. 76B20		

STATE OF ILLINOIS
DEPARTMENT OF TRANSPORTATION

DIVISION OF HIGHWAYS

PROPOSED
HIGHWAY PLANS

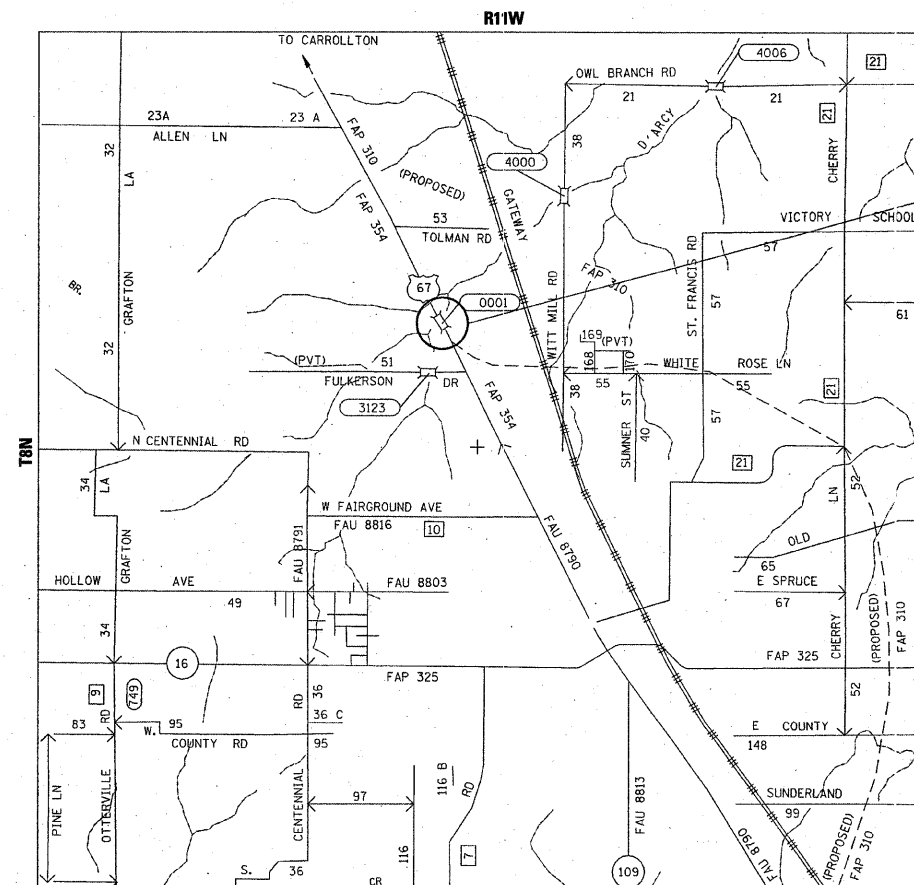
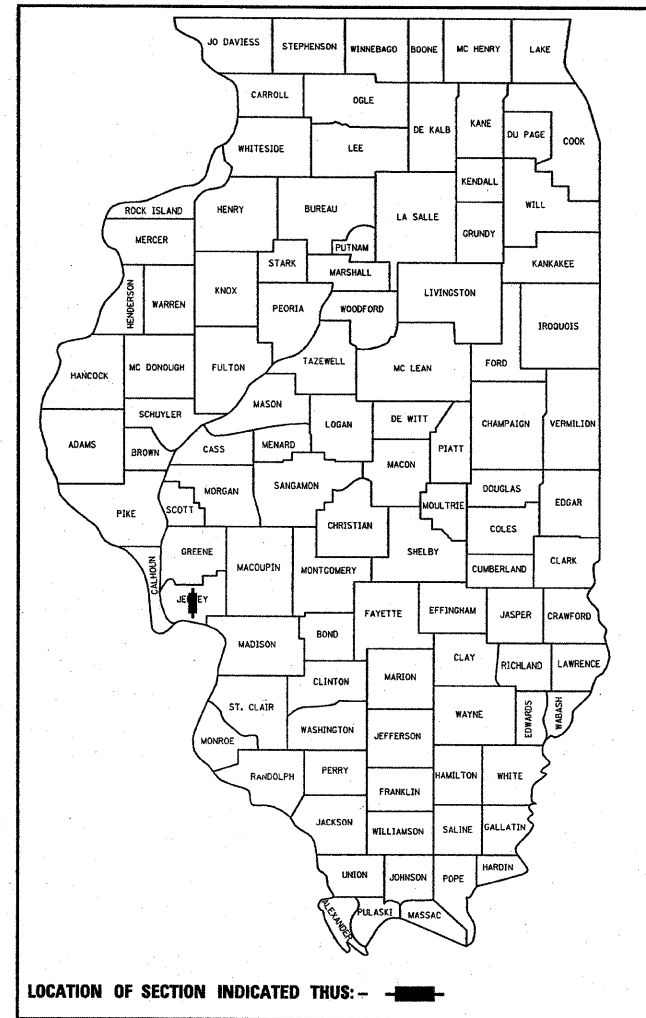
FAP ROUTE 310 (US 67)
SECTION 57BR-1
PROJECT

SUPERSTRUCTURE REPLACEMENT
W/SCOUR MITIGATION

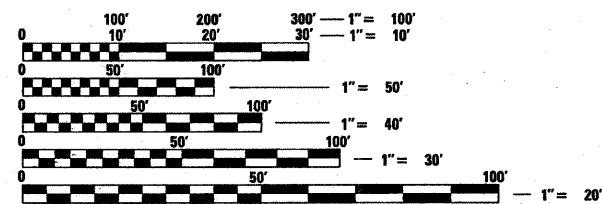
JERSEY COUNTY
C-98-098-07

FOR INDEX OF SHEETS, SEE SHEET NO. 2

D-98-095-07



MAIN SPAN PPC DECK BEAM
SUPERSTRUCTURE TO BE REPLACED
IN KIND OVER DE'ARCY CREEK
STATION 651+79.77
49'-2" & VARIES
BK. TO BK. ABUTS.
S.N. 042-0001



FULL SIZE PLANS HAVE BEEN PREPARED USING STANDARD
ENGINEERING SCALES. REDUCED SIZED PLANS WILL NOT
CONFORM TO STANDARD SCALES. IN MAKING MEASUREMENTS
ON REDUCED PLANS, THE ABOVE SCALES MAY BE USED.

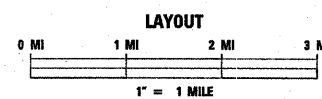
J.U.L.I.E.
JOINT UTILITY LOCATION INFORMATION FOR EXCAVATION
1-800-892-0123
OR 811

PROJECT ENGINEER PATTI LeBEAU (618) 346-3179
PROJECT MANAGER ART MUEHLFELD (618) 346-3209

CONTRACT NO. 76B20

DESIGN DESIGNATION
NA

ADT = 5,500 (2008)
ADT = 7,400 (2028)
SU = 6.4%
MU = 4.1%



GROSS LENGTH 0.009 MI.
NET LENGTH 0.009 MI.

LAT. 39.15156
LONG. 90.34847

STATE OF ILLINOIS
DEPARTMENT OF TRANSPORTATION
DIVISION OF HIGHWAYS

SUBMITTED December 20 20 07

W. C. Jamie
DEPUTY DIRECTOR OF HIGHWAYS, REGION ENGINEER

February 1, 20 08
Eric E. Hamm
ENGINEER OF DESIGN AND ENVIRONMENT

February 1, 20 08
Christine M. Reed
DIRECTOR OF HIGHWAYS, CHIEF ENGINEER

PRINTED BY THE AUTHORITY
OF THE STATE OF ILLINOIS