

GENERAL NOTES

1. THE STANDARDS AND REVISION NUMBERS LISTED SHALL APPLY TO THIS PROJECT.

2. ILLINOIS STATE LAW REQUIRES A 48-HOUR NOTICE BE GIVEN TO UTILITIES BEFORE DIGGING. FIELD MARKING OF FACILITIES MAY BE OBTAINED BY CONTACTING J.U.L.I.E. OR FOR NON-MEMBERS, THE UTILITY COMPANY DIRECTLY. AGENCIES KNOWN TO HAVE FACILITIES WITHIN THE PROJECT AREA ARE AS FOLLOWS:

- *AMEREN IP
- *AT&T ILLINOIS
- *CITY OF CENTRALIA - WATER
- *COUNTYMARK COOPERATIVE, LLP.
- *RACCOON WATER COMPANY
- *SHELL OIL COMPANY.
- *TRI-COUNTY ELECTRIC COOPERATIVE, INC.
- *VILLAGE OF WALNUT HILL

(MEMBERS OF J.U.L.I.E. (800) 892-0123 ARE INDICATED BY *. NON-J.U.L.I.E. MEMBERS MUST BE NOTIFIED INDIVIDUALLY.)

3. WHERE SECTION OR SUB-SECTION MONUMENTS ARE ENCOUNTERED THE ENGINEER SHALL BE NOTIFIED BEFORE SUCH MONUMENTS ARE REMOVED. THE CONTRACTOR SHALL PROTECT AND CAREFULLY PRESERVE ALL PROPERTY MARKERS AND MONUMENTS UNTIL THE OWNER, AN AUTHORIZED SURVEYOR, OR AGENT HAS WITNESSED OR OTHERWISE REFERENCED THE LOCATION.

4. THE CONTRACTOR SHALL VERIFY ALL DIMENSIONS AND CONDITIONS IN THE FIELD PRIOR TO CONSTRUCTION AND ORDERING OF MATERIALS.

5. SHORT TERM PAVEMENT MARKING SHALL BE APPLIED TO THE MILLED, PRIMED, BINDER COURSE AND FINAL SURFACE COURSE. ONLY THE REMOVAL OF THE FINAL SURFACE APPLICATION WILL BE PAID FOR (WORK ZONE PAVEMENT MARKING REMOVAL - SQ. FT). AN AMOUNT OF TEMPORARY PAVEMENT MARKING WHICH EQUALS THE AMOUNT OF PERMANENT PAVEMENT MARKING HAS ALSO BEEN ADDED TO THE PLANS.

6. THE FOLLOWING SUPERPAVE MIXTURE REQUIREMENTS ARE APPLICABLE FOR THIS PROJECT:

MIXTURE USE	INCIDENTAL & SURFACE	LEVEL BINDER	PARTIAL DEPTH PATCH
AC/PG	PG 64-22	PG 64-22	PG 64-22
RAP % (MAX)	10%	10%	10%
DESIGN AIR VOIDS	4.0% @ Ndes=90	4.0% @ Ndes=90	4.0% @ Ndes=90
MIX COMPOSITION (GRADATION MIXTURE)			
FRICITION AGG	MIXTURE "D"	MIXTURE "C"	MIXTURE "C"

MIXTURE USE	SHOULDERS	TOP LIFT SHOULDERS	BINDER
AC/PG	PG 58-22	PG 58-22	PG 64-22
RAP % (MAX)	30%	30%	10%
DESIGN AIR VOIDS	2.0% @ Ndes=30	*2.0% @ Ndes=30	4.0% @ Ndes=90
MIX COMPOSITION (GRADATION MIXTURE)			
FRICITION AGG	BAM	BAM	MIXTURE "B"

*TOP LIFT SHOULDERS - DESIGN THIS MIX AT 2.0% AIR VOIDS AND ADD ASPHALT TO REDUCE AIR VOIDS TO 1.5%.

PLAN QUANTITIES FOR HMA (HOT MIX ASPHALT) CONCRETE SURFACE COURSE ITEMS ARE CALCULATED USING A UNIT WEIGHT OF 112 LB/SQ YD/IN.

7. THE THICKNESS OF THE HMA MIXTURE SHOWN ON THE PLANS IS THE NOMINAL THICKNESS. DEVIATIONS FROM THE NOMINAL THICKNESS WILL BE PERMITTED WHEN SUCH DEVIATIONS OCCUR DUE TO IRREGULARITIES IN THE EXISTING SURFACE OR BASE ON WHICH THE HMA MIXTURE IS PLACED.

8. THE AVERAGE MILLING DEPTH WILL BE 1 1/2". ACTUAL MILLING DEPTHS MAY VARY DEPENDING ON THE EXTENT OF THE CHANNELIZATION. IT IS ESTIMATED THAT 105515 SQ. YDS. (8863.3 TONS) OF HMA SURFACE WILL BE REMOVED.

9. FLAGMEN SHALL BE PRESENT DURING ALL CLOSURE HOURS INCLUDING LUNCH HOUR AND NO ADDITIONAL COMPENSATION SHALL BE ALLOWED.

10. 'ROAD CONSTRUCTION AHEAD' SIGNS SHALL BE PLACED AT THE BEGINNING AND END OF THE PROJECT PLUS THE INTERSECTING SIDEROADS, AND WILL BE CONSIDERED INCLUDED IN THE TRAFFIC CONTROL PAY ITEMS. ALL CONSTRUCTION SIGNS SHALL BE FLUORESCENT ORANGE AND 48" X 48".

11. ANY EXCAVATION OR DROP-OFF MORE THAN 3" AT EDGE OF PAVEMENT SHALL BE PROTECTED WITH EXTENDED LEG BARRICADES AND APPROPRIATE LIGHTING.

12. NO OVERNIGHT LANE CLOSURES WILL BE ALLOWED.

13. ALL TEMPORARY PAVEMENT MARKING SHALL BE PLACED IN SUCH A MANNER SO AS NOT TO INTERFERE WITH THE PLACEMENT OF PERMANENT PAVEMENT MARKINGS.

14. SAW CUTTING ON ALL EDGES FOR REMOVAL ITEMS SHALL BE INCLUDED IN THE COST OF THE REMOVAL ITEMS AS INDICATED AND IN ACCORDANCE WITH SECTION 440 OF THE STANDARD SPECIFICATION.

15. FLAGGERS SHALL BE PRESENT AT SIDEROADS PER THE STANDARDS, AND NO ADDITIONAL COMPENSATION WILL BE ALLOWED.

16. ALL WORK SHALL CONFORM TO THE ILLINOIS DEPARTMENT OF TRANSPORTATION'S "STANDARD SPECIFICATIONS FOR ROAD AND BRIDGE CONSTRUCTION" ADOPTED JANUARY 1, 2007 AND ALL APPLICABLE SUPPLEMENTAL SPECIFICATIONS.

17. THE RELOCATION OF ALL SIGN POSTS AND SIGNS IS INCLUDED IN THE UNIT COST FOR "EARTH EXCAVATION (WIDENING)". NO ADDITIONAL COMPENSATION SHALL BE ALLOWED.

18. 15 CALENDAR DAYS TRAFFIC CONTROL SURVEILLANCE HAS BEEN INCLUDED IN THE PLANS.

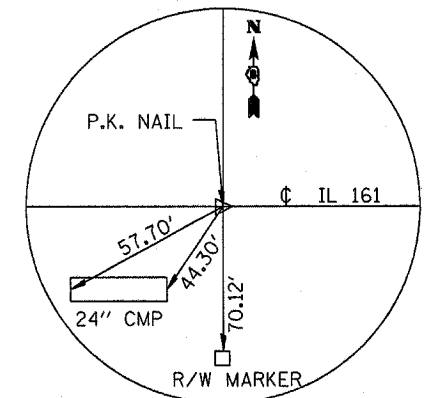
19. LOCATION OF CONCRETE HEADWALLS FOR PIPE DRAINS WILL BE DETERMINED BY ENGINEER.

COMMITMENTS

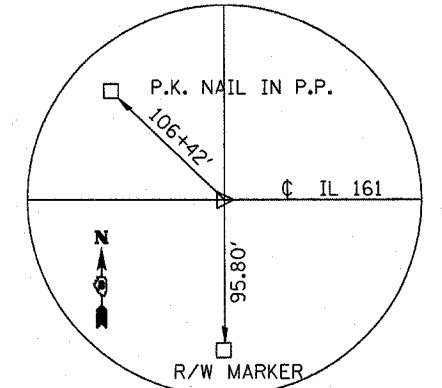
NO COMMITMENTS

STANDARDS

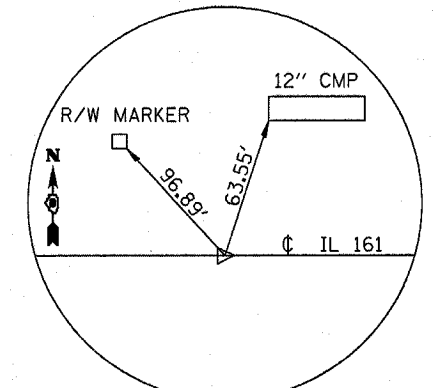
000001-05	701106-01
280001-04	701201-02
442201-03	701301-02
482001-02	701306-01
601001-02	701311-02
631033-02	701326-02
635006-02	701336-04
635011-01	701901
701006-02	720001
701011-01	720006-01
701101-01	720011
	780001-01
	781001-02



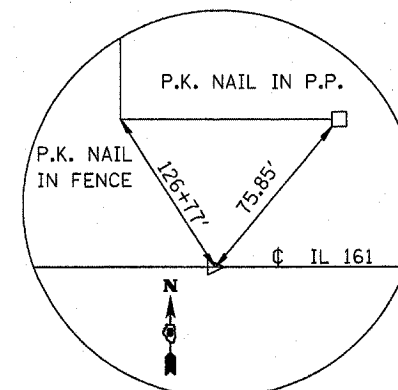
P.C. STA. 305+40.902



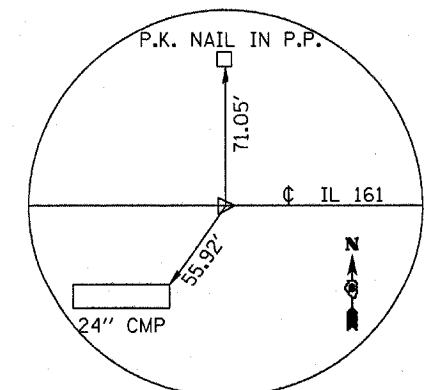
P.T. STA. 319+96.439



P.O.T. STA. 329+96.489



P.O.T. STA. 349+96.489



P.O.T. STA. 339+96.489

REV. 2-21-08

FILE NAME =	USER NAME = #USER#	DESIGNED -	REVISED -
#FILE#		DRAWN -	REVISED -
		CHECKED -	REVISED -
		DATE -	REVISED -

STATE OF ILLINOIS
DEPARTMENT OF TRANSPORTATION

GENERAL NOTES, COMMITMENTS & STANDARDS

SCALE: SHEET NO. OF SHEETS STA. TO STA.

F.A.P. RTE.	SECTION	COUNTY	TOTAL SHEETS	SHEET NO.
805	(101,102,61-1)RS	MARION	81	2
CONTRACT NO. 76B33				
FED. ROAD DIST. NO. ILLINOIS FED. AID PROJECT				