

F.A.P. RTE.	SECTION	COUNTY	TOTAL SHEETS	SHEET NO.
103	271-3	ST CLAIR	13	1
FED. ROAD DIST. NO.	ILLINOIS	CONTRACT NO. 76B56		

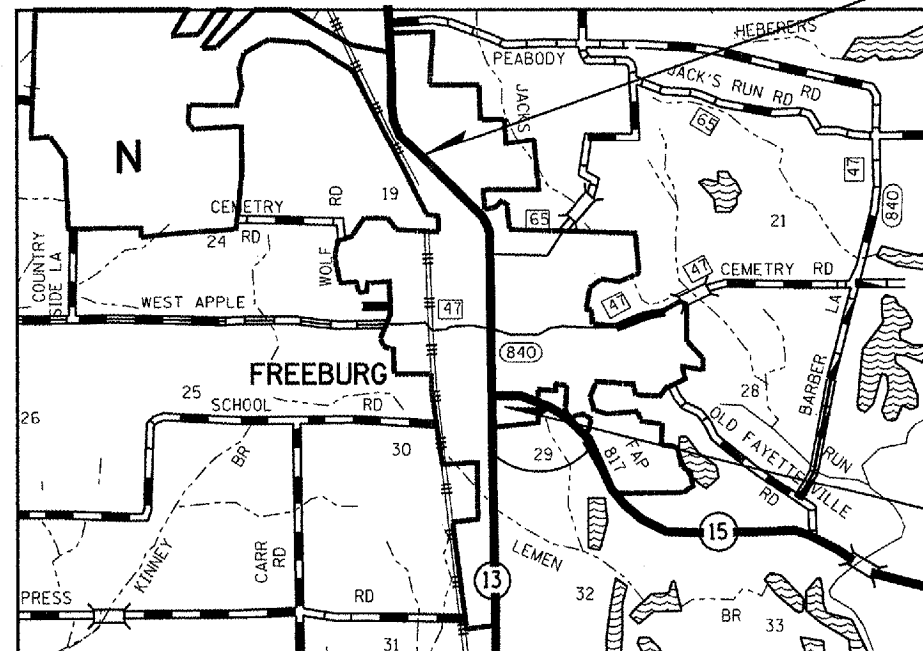
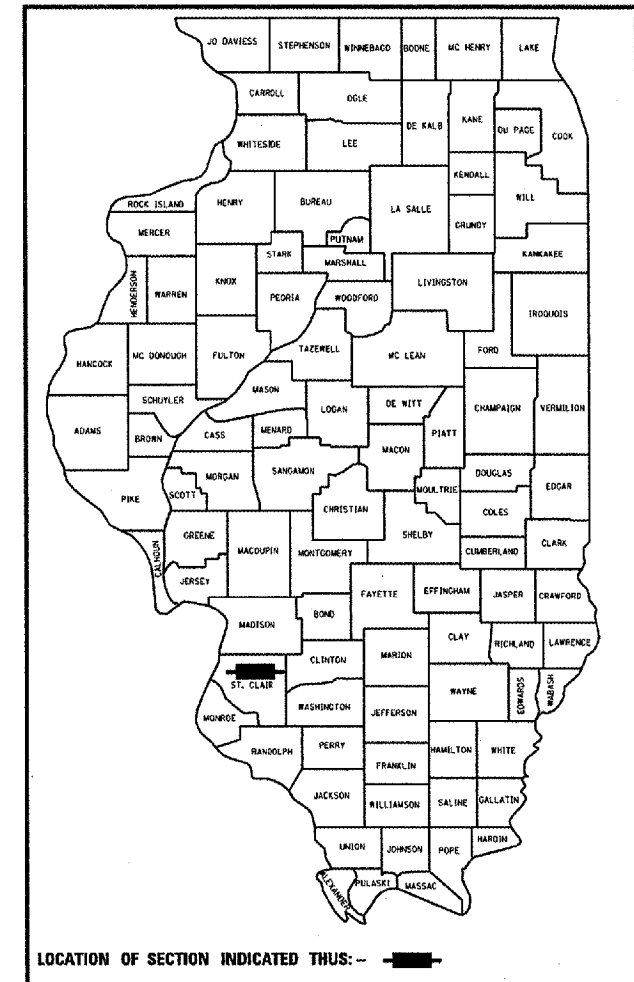
STATE OF ILLINOIS  
DEPARTMENT OF TRANSPORTATION  
DIVISION OF HIGHWAYS

**PROPOSED  
HIGHWAY PLANS**

FAP ROUTE 103 (IL 1315)  
SECTION 271-3  
PATCHING AND RESURFACING  
ST CLAIR COUNTY  
C-98-022-08

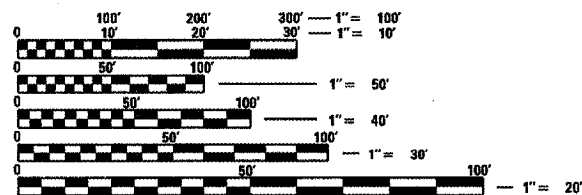
FOR INDEX OF SHEETS, SEE SHEET NO. 2

D-98-028-08



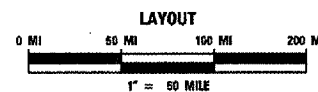
BEGIN PROJECT  
STA. 363 + 50.29  
(KOEESTERER ST.)

END PROJECT  
STA. 401 + 08.99  
(LINCOLN CT.)



FULL SIZE PLANS HAVE BEEN PREPARED USING STANDARD ENGINEERING SCALES. REDUCED SIZED PLANS WILL NOT CONFORM TO STANDARD SCALES. IN MAKING MEASUREMENTS ON REDUCED PLANS, THE ABOVE SCALES MAY BE USED.

J.U.L.I.E.  
JOINT UTILITY LOCATION INFORMATION FOR EXCAVATION  
1-800-892-0123  
OR 811



GROSS PROJECT LENGTH = 3759 FT = 0.71 MILES  
NET PROJECT LENGTH = 3759 FT = 0.71 MILES

PROJECT ENGINEER: PATTI LEBEAU (618)346-3179  
SQUAD LEADER: CHERYL KEPLAR (618)346-3186

CONTRACT NO. 76B56

STATE OF ILLINOIS  
DEPARTMENT OF TRANSPORTATION  
DIVISION OF HIGHWAYS

SUBMITTED December 19, 2007

*Mary C. Jamie*  
DEPUTY DIRECTOR OF HIGHWAYS, REGION 5 ENGINEER

February 1, 2008  
*Eric E. Harms*  
INTERIM ENGINEER OF DESIGN AND ENVIRONMENT

February 1, 2008  
*Christine M. Reed*  
DIRECTOR OF HIGHWAYS, CHIEF ENGINEER

**PRINTED BY THE AUTHORITY  
OF THE STATE OF ILLINOIS**

## GENERAL NOTES

- ① ILLINOIS STATE LAW REQUIRES A 48-HOUR NOTICE TO BE GIVEN TO UTILITIES BEFORE DIGGING. FIELD MARKING OF FACILITIES MAY BE OBTAINED BY CONTACTING J.U.L.I.E. OR FOR NON-MEMBERS, THE UTILITY COMPANY DIRECTLY. AGENCIES KNOWN TO HAVE FACILITIES WITHIN THE PROJECT AREA ARE AS FOLLOWS:

UTILITY
IL POWER COMPANY*
CHARTER COMMUNICATIONS, INC.*
MCI COMM.*
VILLAGE OF FREEBURG*
SBC*

MEMBERS OF J.U.L.I.E. (800)-892-0123 ARE INDICATED BY \*. NON J.U.L.I.E. MEMBERS MUST BE NOTIFIED INDIVIDUALLY.

- ② THE THICKNESS OF THE HMA MIXTURE SHOWN ON THE PLANS IS THE NOMINAL THICKNESS. DEVIATIONS FROM THE NOMINAL THICKNESS WILL BE PERMITTED WHEN SUCH DEVIATIONS OCCUR DUE TO IRREGULARITIES IN THE EXISTING SURFACE OR BASE ON WHICH THE HMA MIXTURE IS PLACED.
- ③ SHORT-TERM PAVEMENT MARKING SHALL BE APPLIED TO THE MILLED, PRIMED AND FINAL HMA SURFACE. A QUANTITY FOR TEMPORARY PAVEMENT MARKING EQUAL TO THE AMOUNT OF PERMANENT MARKING HAS BEEN ADDED TO THE PLANS. ONLY QUANTITY PLACED ON FINAL SURFACE WILL BE REMOVED AND PAID FOR AS "WORK ZONE PAVEMENT MARKING REMOVAL".
- ④ THE FOLLOWING MIXTURE REQUIREMENTS ARE APPLICABLE FOR THIS PROJECT:

ROUTE	FAP RTE 103
SECTION	271-3
COUNTY	ST CLAIR
CONTRACT	76B56

DESCRIPTION:	IL 15/13 FROM KOESTERER TO LINCOLN IN FREEBURG
--------------	--

ADT (Construction Yr)	15000 (2005)	14300 (2008)	14600 (2008)
MUX:	3.1%	2.6%	2.3%
SUX:	2.6%	4.0%	4.3%
LOCATION	KOESTER/MILL	MILL/APPLE	APPLE/LINCOLN

MIXTURE USE	SURFACE
AC/PG	SBS 76-22
RAP % (MAX)	10%
DESIGN AIR VOIDS	4.0% @ Ndes=90
MIX COMPOSITION	
(GRADATION MIXTURE)	
FRICTION AGG	MIXTURE "D"

Plan quantities for HMA Concrete Surface Course items are calculated using a unit weight of 112 lb/sq yd/in.

- ⑤ "ROAD CONSTRUCTION AHEAD" SIGNS SHALL BE PLACED AT THE BEGINNING OF THE PROJECT, BOTH DIRECTIONS ON APPLE ST. AND THE INTERSECTING SIDE ROADS, AND WILL BE INCLUDED IN THE TRAFFIC CONTROL PAY ITEMS. ALL CONSTRUCTION SIGNS SHALL BE FLUORESCENT ORANGE 48".
- ⑥ FLAGMEN SHALL BE PRESENT DURING ALL WORK HOURS, INCLUDING LUNCH HOUR, AND NO ADDITIONAL COMPENSATION SHALL BE APPLIED.
- ⑦ PAVEMENT MARKING SHOWN IN THE PLANS IS APPROXIMATE. THE LOCATION OF THE PROPOSED CROSSWALKS AND STOP BARS SHOULD MATCH EXISTING FIELD CONDITIONS, UNLESS OTHERWISE NOTED IN THE PLANS.
- ⑧ THE CONTRACTOR SHALL VERIFY ALL DIMENSIONS AND CONDITIONS IN THE FIELD PRIOR TO CONSTRUCTION AND ORDERING OF MATERIALS.
- ⑨ THE CONTRACTOR AND THE ENGINEER SHALL BE AWARE THAT NO SURVEY WAS PERFORMED FOR THIS PROJECT. THE STATIONING SHOWN IN THE PLANS WAS CREATED USING MICROFILM AND FIELD MEASUREMENTS MADE BY DESIGN PERSONNEL. IT SHALL BE ASSUMED TO BE APPROXIMATE.
- ⑩ THE USE OF VIBRATORY ROLLERS IS PROHIBITED. THIS DOES NOT RELIEVE THE CONTRACTOR OF DENSITY REQUIREMENTS FOR THE HMA PAVEMENTS AS SPECIFIED IN SECTIONS 406 & 407 OF THE STANDARD SPECIFICATIONS.
- ⑪ TYPE III BARRICADES SHALL BE PLACED AT ALL SIDE ROADS WHILE ACCESS IS NOT AVAILABE DURING PAVEMENT REMOVAL AND PCC BASE COURSE WIDENING. PAYMENT SHALL BE INCLUDED IN TRAFFIC CONTROL PAY ITEMS.
- ⑫ ACCES TO ALL HOMES AND BUSINESSES SHALL BE MAINTAINED AT ALL TIMES.
- ⑬ TWO-WAY TRAFFIC SHALL BE MAINTAINED AT ALL TIMES.

## INDEX OF SHEETS

1. COVER SHEET
2. INDEX OF SHEETS, GENERAL NOTES STANDARDS & COMMITMENTS
3. SUMMARY OF QUANTITIES
4. SCHEDULES
5. TYPICAL SECTIONS
- 6.-12. PLAN VIEW
13. PAVEMENT MARKING DETAILS

## COMMITMENTS

COMMITMENTS FOR THIS PROJECT ARE AS FOLLOWS:

NONE

## HIGHWAY STANDARDS

000001-05  
001006  
442201-03  
701301-02  
701311-02  
701502-02  
701901  
781001-02

# SUMMARY OF QUANTITIES

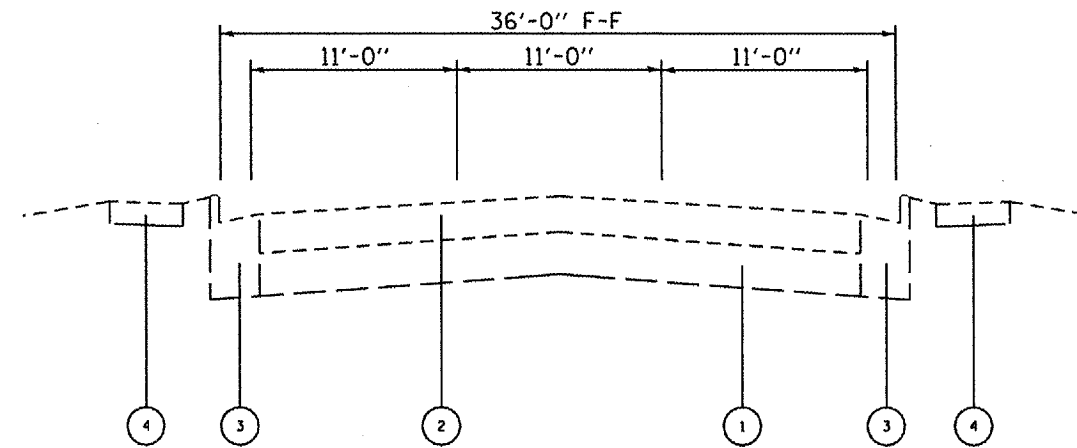
SUMMARY OF QUANTITIES			TOTAL QUANTITIES	CONSTRUCTION TYPE CODE		SUMMARY OF QUANTITIES			TOTAL QUANTITIES	CONSTRUCTION TYPE CODE	
CODE NO	ITEM	UNIT		1000 100% STATE	-----	-----	CODE NO	ITEM		UNIT	-----
X3540050	PORTLAND CEMENT CONCRETE BASE COURSE WIDENING 10 1/2"	SQ YD	1295	1295							
X4420135	CLASS C PATCHES, TYPE III, 10 1/2 INCH	SQ YD	18	18							
40600200	BITUMINOUS MATERIALS (PRIME COAT)	TON	3.8	3.8							
40600300	AGGREGATE (PRIME COAT)	TON	3.7	3.7							
40600990	TEMPORARY RAMP	SQ YD	83	83							
40603345	HOT-MIX ASPHALT SURFACE COURSE, MIX "D", NSO	TON	274	274							
44000100	PAVEMENT REMOVAL	SQ YD	1295	1295							
44000157	HOT-MIX ASPHALT SURFACE REMOVAL, 2"	SQ YD	2442	2442							
44201360	CLASS C PATCHES, TYPE IV, 10 1/2 INCH	SQ YD	51	51							
44201811	CLASS D PATCHES, TYPE I, 14 INCH	SQ YD	18	18							
67100100	MOBILIZATION	L SUM	1	1							
70102622	TRAFFIC CONTROL AND PROTECTION, STANDARD 701502	L SUM	1	1							
70300100	SHORT-TERM PAVEMENT MARKING	FOOT	1085	1085							
70300220	TEMPORARY PAVEMENT MARKING - LINE 4"	FOOT	2528	2528							
70300250	TEMPORARY PAVEMENT MARKING - LINE 8"	FOOT	24	24							
70300260	TEMPORARY PAVEMENT MARKING - LINE 12"	FOOT	52	52							
70301000	WORK ZONE PAVEMENT MARKING REMOVAL	SQ FT	121	121							
X78000200	THERMOPLASTIC PAVEMENT MARKING - LINE 4"	FOOT	2528	2528							
X78000500	THERMOPLASTIC PAVEMENT MARKING - LINE 8"	FOOT	24	24							
X78000600	THERMOPLASTIC PAVEMENT MARKING - LINE 12"	FOOT	52	52							
78300100	PAVEMENT MARKING REMOVAL	SQ FT	213	213							
80300100	LOCATING UNDERGROUND CABLE	FOOT	60	60							

*\*SPECIALTY ITEMS*

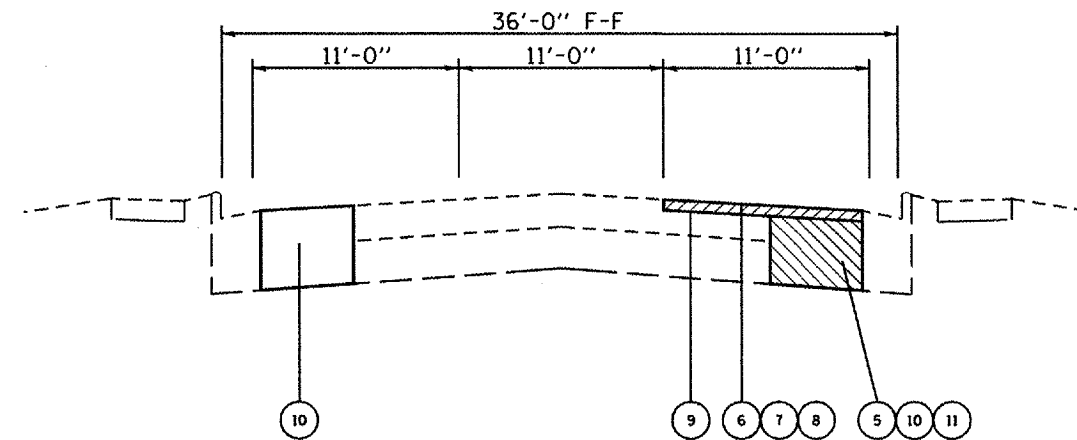


**LEGEND**

- ① EXISTING PCC PAVEMENT 7"
- ② EXISTING HMA RESURFACING 3 1/2"
- ③ EXISTING CCC&G, TYPE B-6.18
- ④ EXISTING SIDEWALK
- ⑤ PROPOSED PCC BASE COURSE WIDENING 10 1/2"
- ⑥ PROPOSED HMA SURFACE REMOVAL, 2"
- ⑦ PROPOSED AGGREGATE (PRIME COAT)
- ⑧ PROPOSED BITUMINOUS MATERIALS (PRIME COAT)
- ⑨ PROPOSED HMA SURFACE COURSE MIX "D" N90
- ⑩ PROPOSED CLASS "C" PATCH 10 1/2"
- ⑪ PROPOSED CLASS "D" PATCH 14"



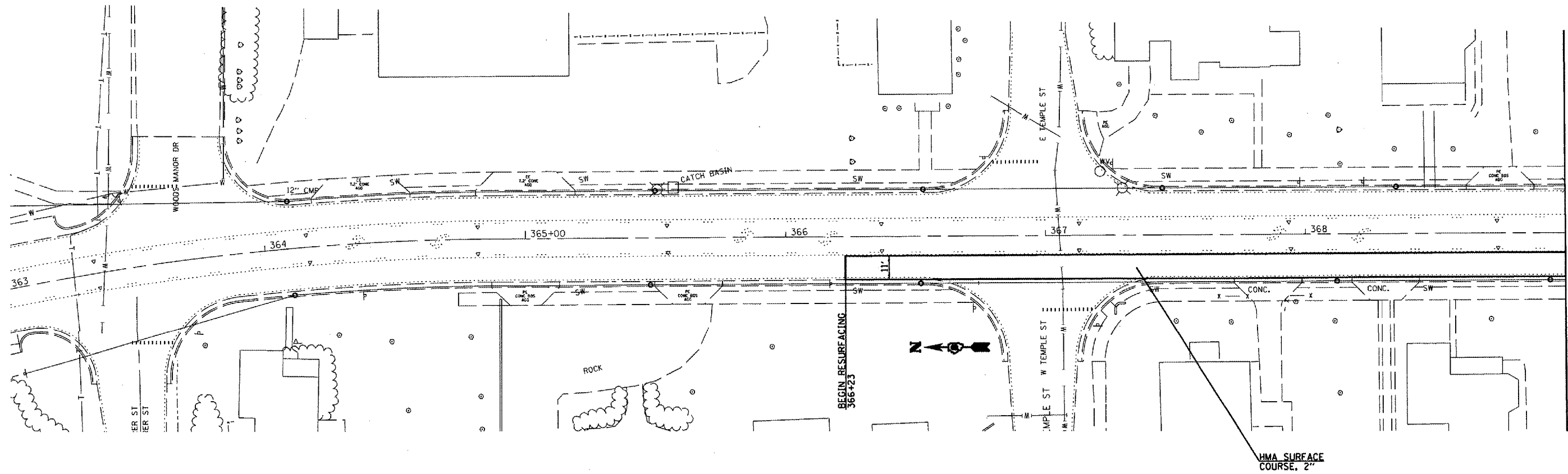
**EXISTING TYPICAL SECTION**  
 STA. 366+23 TO STA. 386+21  
 STA. 399+97 TO STA. 400+41



**PROPOSED TYPICAL SECTION**  
 STA. 366+23 TO STA. 386+21  
 STA. 399+97 TO STA. 400+41

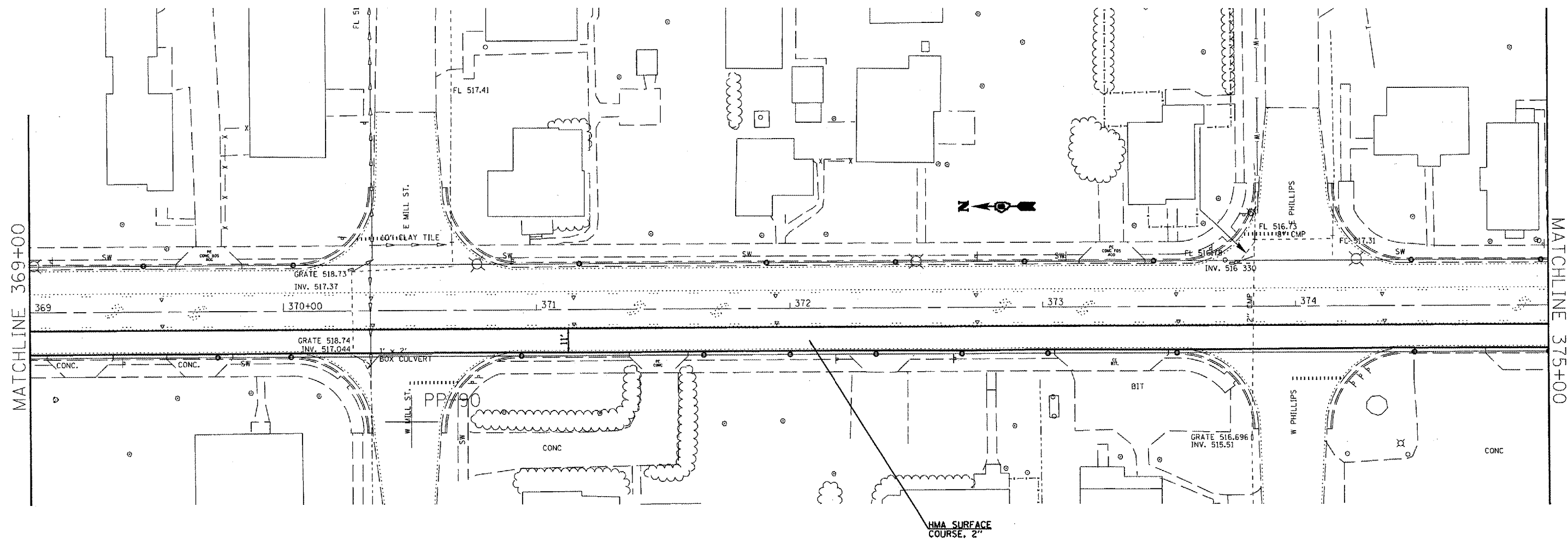
NOTE: RESURFACING STA. 366+23 TO STA. 386+21

FILE NAME = c:\projects\ed02808\plan\pln02808a.dgn	USER NAME = elfordb	DESIGNED -	REVISED -	<b>STATE OF ILLINOIS DEPARTMENT OF TRANSPORTATION</b>	<b>TYPICAL SECTIONS</b>			F.A.P. RTE. 103	SECTION 271-3	COUNTY ST. CLAIR	TOTAL SHEETS 13	SHEET NO. 5
PLOT SCALE = 1/8" = 10'-0"	CHECKED -	REVISED -	REVISED -		SCALE:	SHEET NO.	OF	SHEETS	STA.	TO STA.	CONTRACT NO. 76856	
PLOT DATE = 12/3/2007	DATE -	REVISED -	REVISED -		FED. ROAD DIST. NO. ILLINOIS FED. AID PROJECT							



MATCHLINE 369+00

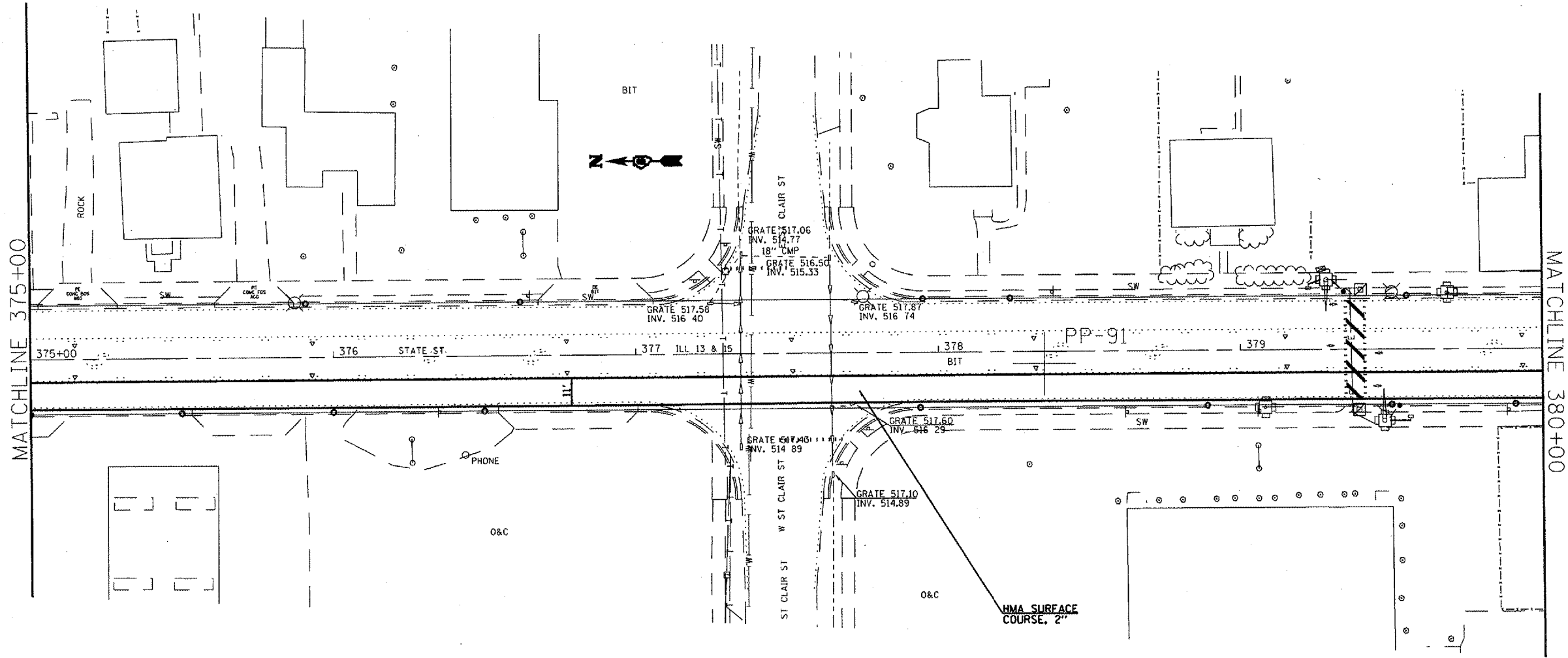
FILE NAME = c:\projects\ed02808\plan\pln02808.dgn	USER NAME = alforab	DESIGNED -	REVISED -	<b>STATE OF ILLINOIS</b> <b>DEPARTMENT OF TRANSPORTATION</b>	<b>PLAN SHEET</b>		F.A.P. RTE.	SECTION	COUNTY	TOTAL SHEETS	SHEET NO.
	PLOT SCALE = 41.4586' / IN.	CHECKED -	REVISED -				103	271-3	ST CLAIR	13	6
	PLOT DATE = 12/3/2007	DATE -	REVISED -				<b>CONTRACT NO. 76856</b>				
					SCALE: 20	SHEET NO. OF SHEETS	STA. TO STA.	FED. ROAD DIST. NO. ILLINOIS FED. AID PROJECT			



MATCHLINE 369+00

MATCHLINE 375+00

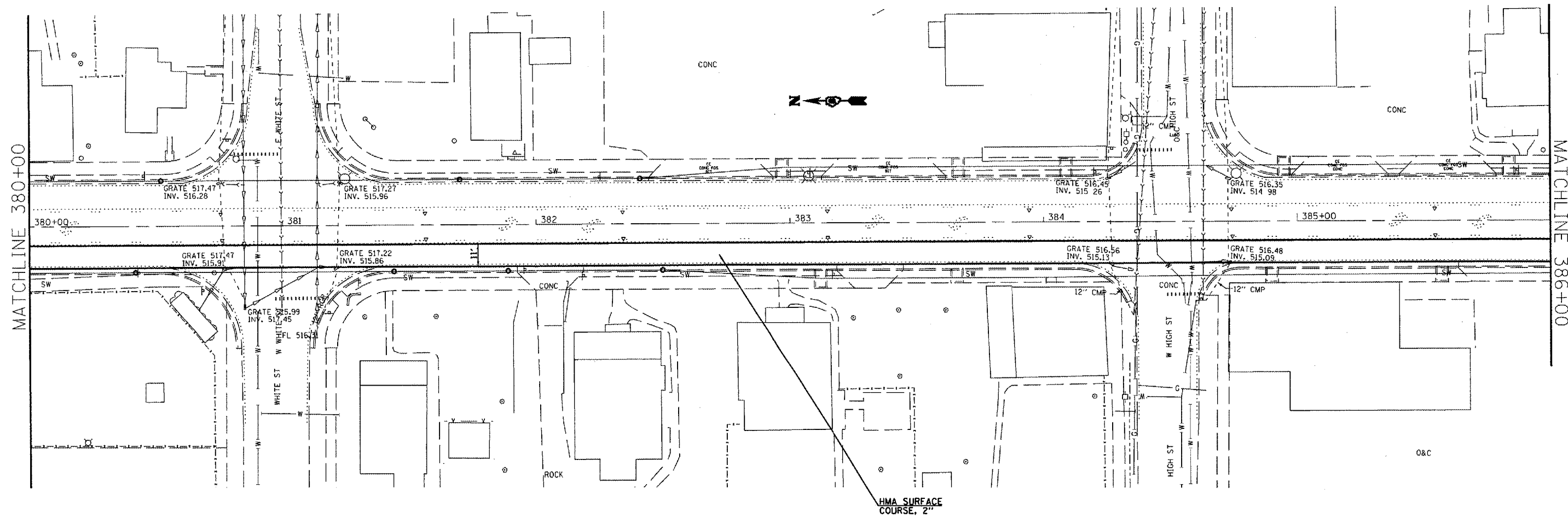
FILE NAME = c:\projects\led\2008\plan\pln\2008e.dgn	USER NAME = aifordb	DESIGNED -	REVISED -	<b>STATE OF ILLINOIS DEPARTMENT OF TRANSPORTATION</b>	<b>PLAN SHEET</b>			F.A.P. RTE.	SECTION	COUNTY	TOTAL SHEETS	SHEET NO.
	PLOT SCALE = 41.4586' / IN.	DRAWN -	REVISED -		103	271-3	ST CLAIR	13	7			
PLOT DATE = 12/3/2007	CHECKED -	REVISED -	SCALE: 20			SHEET NO. OF SHEETS STA. TO STA.			FED. ROAD DIST. NO.	ILLINOIS FED. AID PROJECT		
	DATE -	REVISED -	CONTRACT NO. 76856									



NOTE: QTY HAS BEEN INCLUDED TO LOCATE UNDERGROUND UTILITIES FOR PEDESTRIAN SIGNAL.

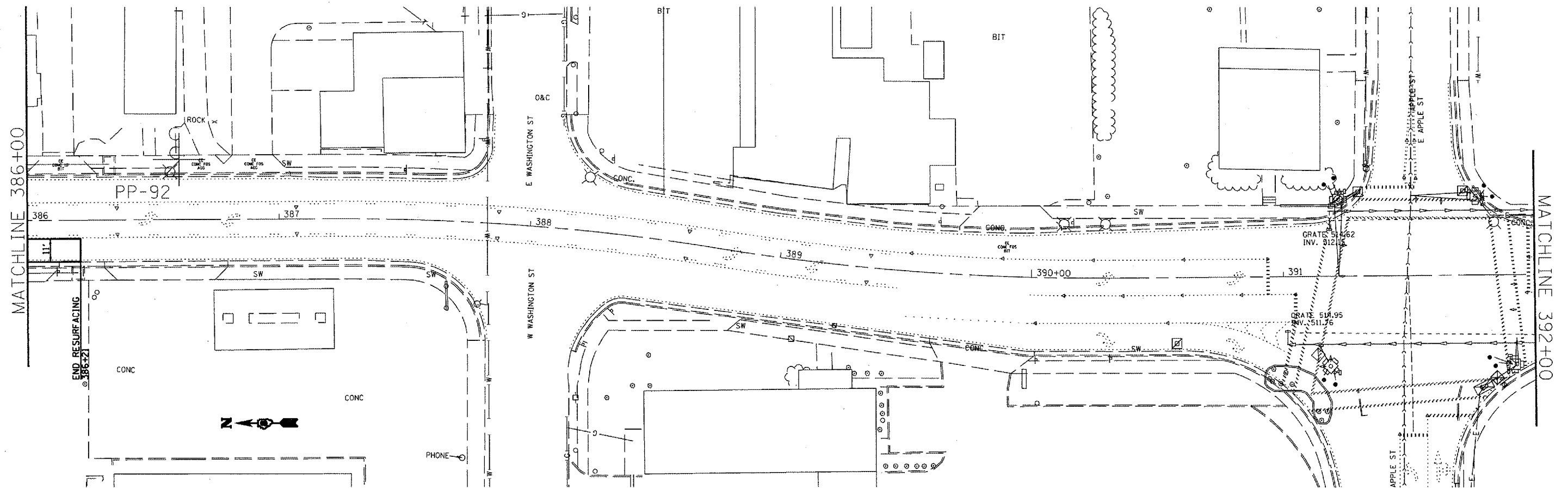
FILE NAME = c:\projects\ad\2288\plan\p1n\2288e.dgn	USER NAME = alfordb	DESIGNED -	REVISED -	<b>STATE OF ILLINOIS DEPARTMENT OF TRANSPORTATION</b>	<b>PLAN SHEET</b>		F.A.P. RTE.	SECTION	COUNTY	TOTAL SHEETS	SHEET NO.
	PLOT SCALE = 41.4586' / IN.	DRAWN -	REVISED -				.103	271-3	ST. CLAIR	13	8
PLOT DATE = 12/5/2007	CHECKED -	REVISED -	SCALE: 20' OF SHEETS STA. TO STA.		CONTRACT NO. 76856		FED. ROAD DIST. NO. ILLINOIS FED. AID PROJECT				
	DATE -	REVISED -									





NOTE: OTY HAS BEEN INCLUDED TO LOCATE UNDERGROUND UTILITIES FOR PEDESTRIAN SIGNAL, IF NEEDED.

FILE NAME = c:\projects\led82888\plan\p1n82888a.dgn	USER NAME = elfordb	DESIGNED - DRAWN -	REVISED - REVISED -	<b>STATE OF ILLINOIS DEPARTMENT OF TRANSPORTATION</b>	<b>PLAN SHEET</b>			F.A.P. RTE. 103	SECTION 271-3	COUNTY ST CLAIR	TOTAL SHEETS 15	SHEET NO. 9
PLOT SCALE = 41:4586 1/2 IN.	CHECKED -	REVISED -	REVISED -		SCALE: 20	SHEET NO.	OF SHEETS	STA.	TO STA.	CONTRACT NO. 76856		
PLOT DATE = 12/3/2007	DATE -	REVISED -	REVISED -		FED. ROAD DIST. NO. ILLINOIS FED. AID PROJECT							



FILE NAME = c:\projects\ed02808\plan\pln02808a.dgn

USER NAME = aifordb  
 PLOT SCALE = 41.4586" / IN.  
 PLOT DATE = 12/3/2007

DESIGNED -  
 DRAWN -  
 CHECKED -  
 DATE -

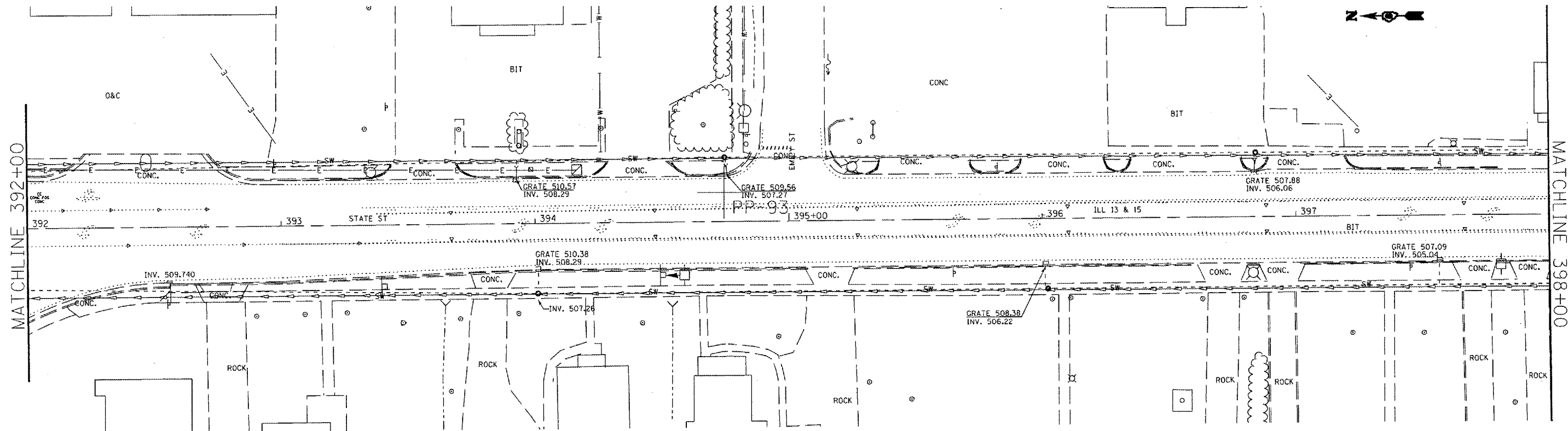
REVISED -  
 REVISED -  
 REVISED -  
 REVISED -

**STATE OF ILLINOIS  
 DEPARTMENT OF TRANSPORTATION**

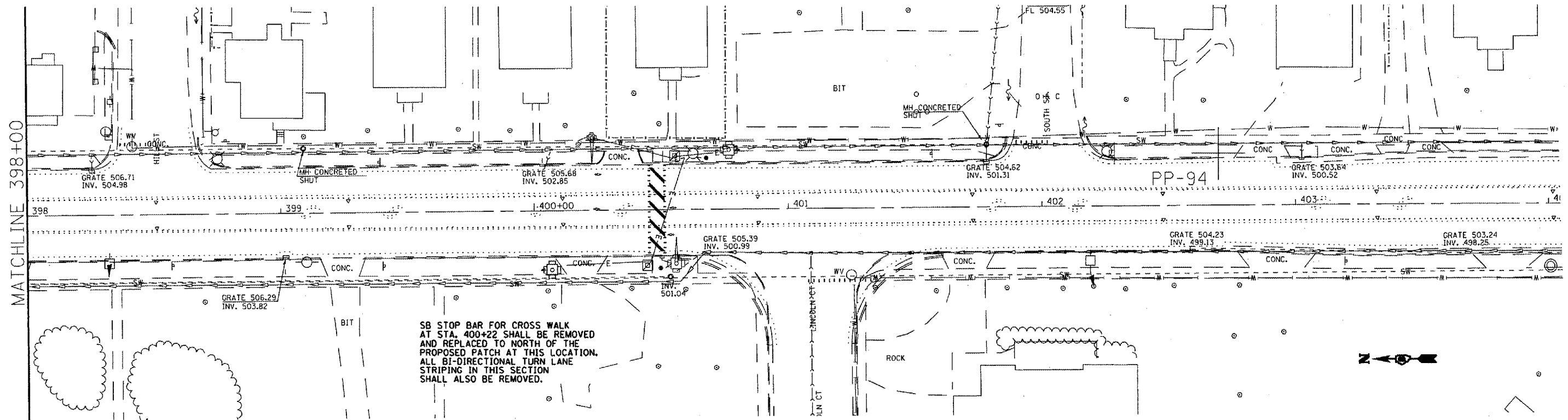
**PLAN SHEET**

SCALE: 20 SHEET NO. OF SHEETS STA. TO STA.

F.A.P. RTE. 103	SECTION 271-3	COUNTY ST CLAIR	TOTAL SHEETS 13	SHEET NO. 10
CONTRACT NO. 76B56				
FED. ROAD DIST. NO. ILLINOIS FED. AID PROJECT				



FILE NAME =	USER NAME = alfordb	DESIGNED -	REVISED -	<b>STATE OF ILLINOIS DEPARTMENT OF TRANSPORTATION</b>	<b>PLAN SHEET</b>			F.A.P. RTE.	SECTION	COUNTY	TOTAL SHEETS	SHEET NO.
c:\projects\ed02805\plan\pln02808a.dgn		DRAWN -	REVISED -		103	271-3	ST CLAIR	13	11			
PLOT SCALE = 41.4586' / IN.		CHECKED -	REVISED -		<b>CONTRACT NO. 76856</b>							
PLOT DATE = 12/3/2007		DATE -	REVISED -		SCALE: 20	SHEET NO. OF SHEETS	STA. TO STA.	FED. ROAD DIST. NO.	ILLINOIS FED. AID PROJECT			



NOTE: QTY HAS BEEN INCLUDED TO LOCATE UNDERGROUND UTILITIES FOR PEDESTRIAN SIGNAL.

FILE NAME = c:\projects\ed82808\plan\pln@2888a.dgn	USER NAME = elfordb	DESIGNED - ---	REVISED - ---	<b>STATE OF ILLINOIS DEPARTMENT OF TRANSPORTATION</b>	<b>PLAN SHEET</b>		F.A.R. RTE. 103	SECTION 271-3	COUNTY ST. CLAIR	TOTAL SHEETS 13	SHEET NO. 12	
PLOT SCALE = 41.4586 "/ IN.		CHECKED - ---	REVISED - ---		SCALE: 20	SHEET NO. OF SHEETS	STA. TO STA.	FED. ROAD DIST. NO. ILLINOIS FED. AID PROJECT				
PLOT DATE = 12/5/2007		DATE - ---	REVISED - ---		<b>CONTRACT NO. 16856</b>							

