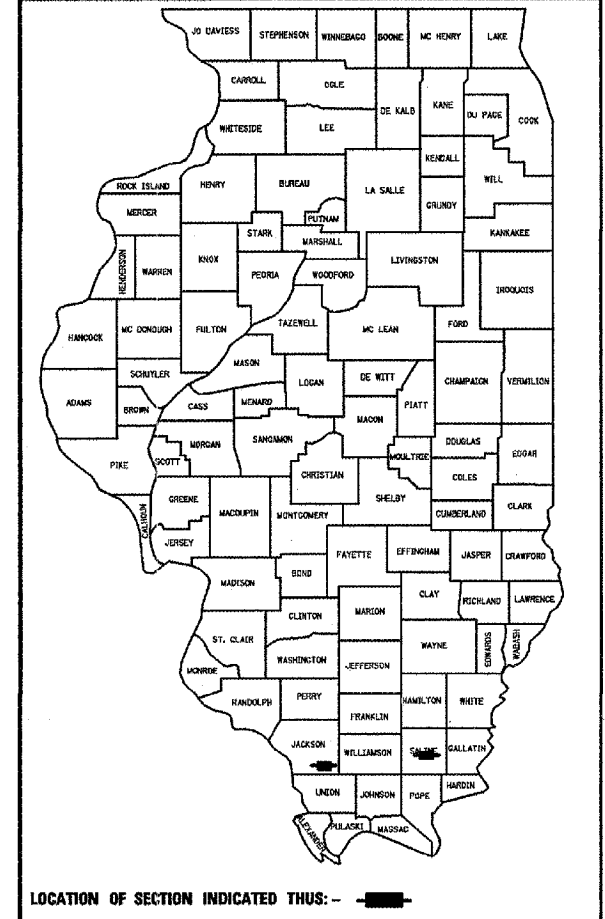


FAS NO.	SECTION	COUNTY	TOTAL SHEETS	SHEET NO.
•	••	•••	30	1

• VARIOUS
 •• D9 CONT. MAINT. BIT. RES. FY 08-1
 ••• SALINE & JACKSON

D-99-037-07



LOCATION OF SECTION INDICATED THUS: -

STATE OF ILLINOIS
 DEPARTMENT OF TRANSPORTATION
 DIVISION OF HIGHWAYS

**PROPOSED
 HIGHWAY PLANS**

F.A.S. ROUTE 919 & F.A.P. ROUTE 331
 (MAKANDA ROAD & IL ROUTE 13)
 SECTION D9 CONT MAINT BIT RES FY 08-1

SALINE AND JACKSON COUNTIES

C-99-034-07

FOR INDEX OF SHEETS, SEE SHEET NO. 2

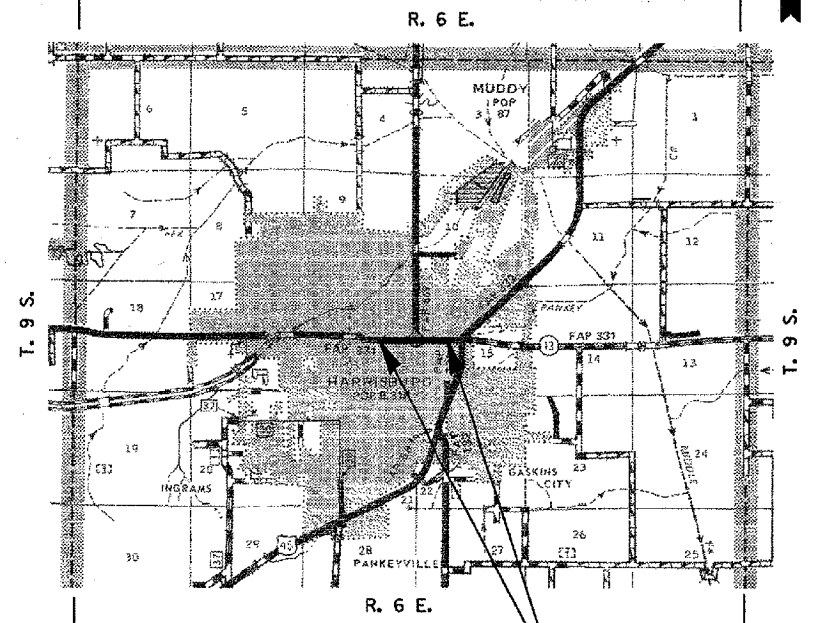
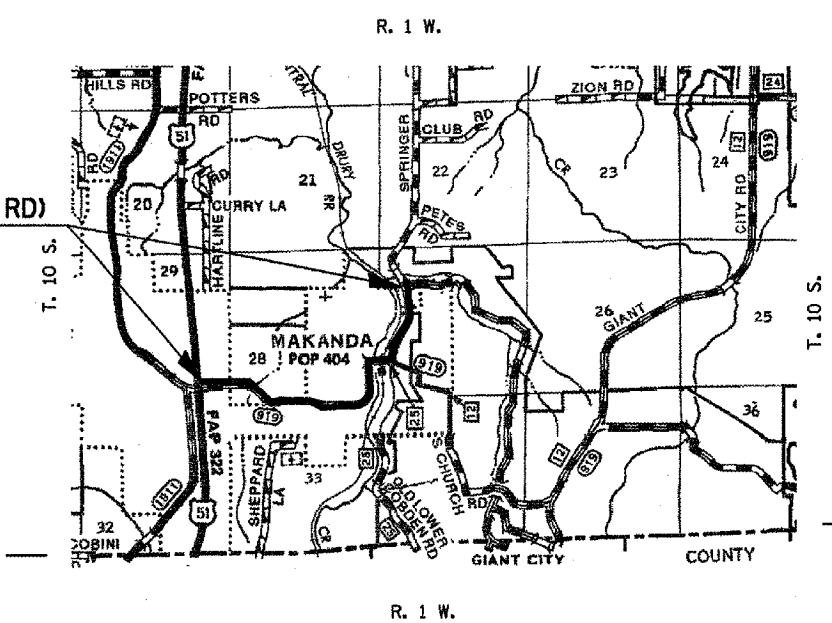
ADT:
 LOCATION 1 (MAKANDA)- FAS 919(2007)
 ADT = 683
 PV= 621
 SU= 62
 MU= 0
 TRUCK = 9%
 LOCATION 2 (HARRISBURG)- FAP 331 (2007)
 ADT = 16,094
 PV= 14,935
 SU= 824
 MU= 335
 TRUCK= 7%

EQUATION STATIONS:

LOCATION 1 (MAKANDA)-
 EQ. STA. 85+09.23 (BK.) = STA. -(0+44.77) (AH.)
 EQ. STA. -(0+00) (BK.) = STA. 0+00 (AH.)
 EQ. STA. 3+27.40 (BK.) = STA. 2+28.10 (AH.)

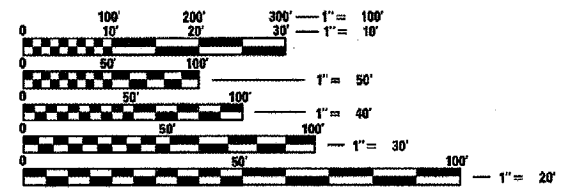
LOCATION 2 (HARRISBURG)-
 STA. 1053+58.8 (FAP 331/IL 13) =
 STA. 26+23.53 (IL 34/MAIN ST.)

LOCATION 1 - FAS 919 (MAKANDA RD)
 STA. 1+00 TO STA. 35+00
 2.281 MILES



LOCATION 2 - FAP 331 (IL 13) POPLAR ST. IN
 HARRISBURG FROM GRANGER ST. TO GUM ST.
 STA. 1040+00 TO STA. 1072+46; 0.58 MILES

TOWNSHIPS: MAKANDA AND HARRISBURG



FULL SIZE PLANS HAVE BEEN PREPARED USING STANDARD
 ENGINEERING SCALES. REDUCED SIZED PLANS WILL NOT
 CONFORM TO STANDARD SCALES. IN MAKING MEASUREMENTS
 ON REDUCED PLANS, THE ABOVE SCALES MAY BE USED.

J.U.L.I.E.
 JOINT UTILITY LOCATION INFORMATION FOR EXCAVATION
 1-800-892-0123

MAKANDA LOCATION LENGTH = 12,041.3 FT. = 2.281 MILES
 HARRISBURG LOCATION LENGTH = 3071 FT. = 0.58 MILES
 LENGTH OF PROJECT = 15112.3 FT. = 2.86 MILES

CONTRACT NO. 78012

STATE OF ILLINOIS
 DEPARTMENT OF TRANSPORTATION
 DIVISION OF HIGHWAYS

SUBMITTED *Dec 12, 2007*
Mary C. Hamel
 DEPUTY DIRECTOR OF HIGHWAYS, REGION ENGINEER

February 1, 2008
Eric E. Harms
 INTERIM ENGINEER OF DESIGN AND ENVIRONMENT

February 1, 2008
Christine M. Reed
 DIRECTOR OF HIGHWAYS, CHIEF ENGINEER

**PRINTED BY THE AUTHORITY
 OF THE STATE OF ILLINOIS**

PROJECT ENGINEER: CHARLES STEIN - (618)351-5210
 DESIGN TECHNICIAN: KATHI MCCORD - (618)351-5211