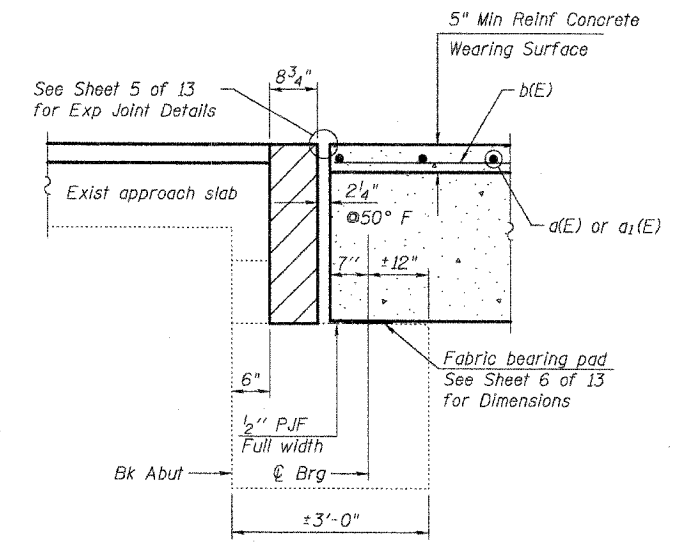
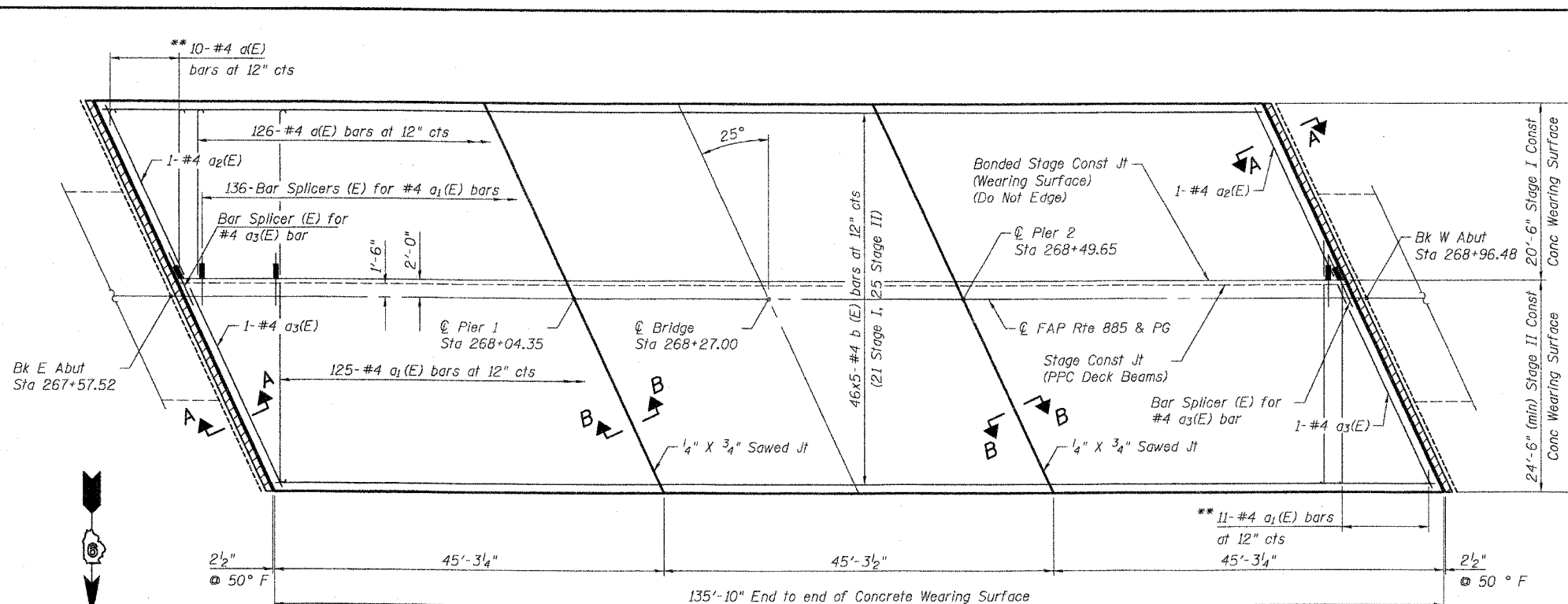


Contract # 78025



SECTION A-A
(Dim at right angles)

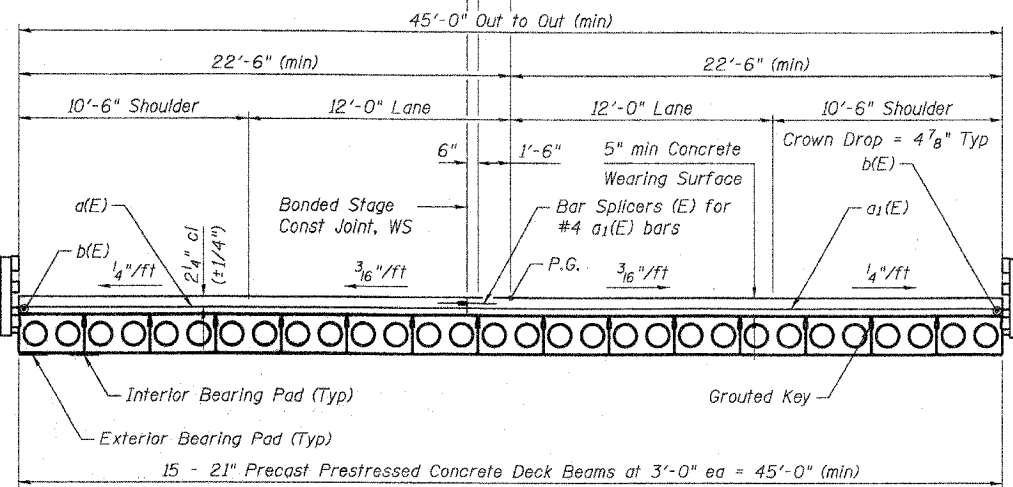
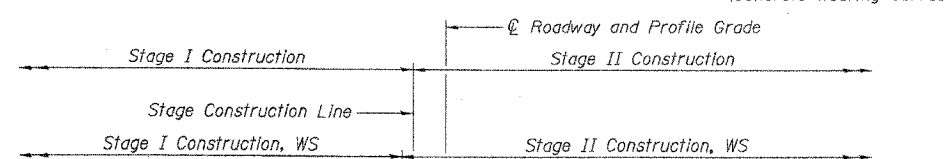
NOTES

For details of hatched area see Sheet 9 of 13.
 After beams have been erected, holes shall be drilled into substructure and anchor dowels placed. Dowel holes shall be filled with non-shrink grout to top of beam and allowed to cure min. 24 hrs. prior to grouting the shear keys.
 The 5" wearing surface shall be poured after the beams are erected and the joints have been grouted.
 See Sheet 2 & 7 of 13 for for rail details.
 See Sheet 13 of 13 for bar splicer details.

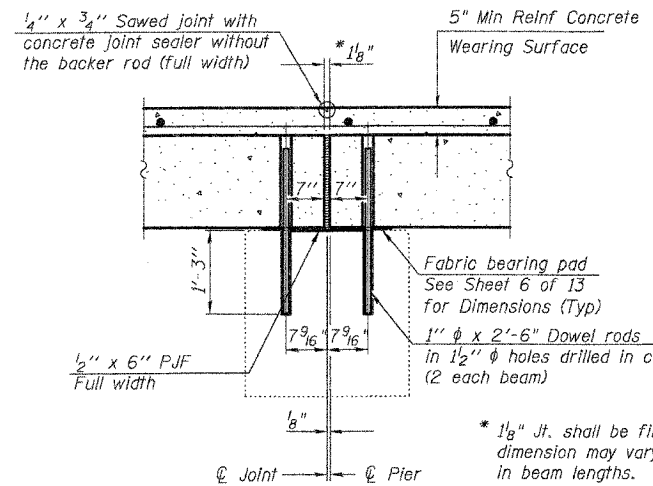
**SUPERSTRUCTURE
BILL OF MATERIAL**

Bar No.	Size	Length	Shape
a(E)	136 #4	20'-8"	U
a ₁ (E)	136 #4	24'-8"	U
a ₂ (E)	2 #4	22'-3"	U
a ₃ (E)	2 #4	26'-8"	U
b(E)	230 #4	28'-2"	U
Concrete Wearing Surface, 5"			Sq. Yds. 679
Reinforcement Bars, Epoxy Coated			Lbs. 8510
Bar Splicers			Each 138

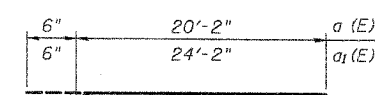
Bars indicated thus 46 x 5 - #4 etc. indicates 46 lines of bars with 5 lengths per line.



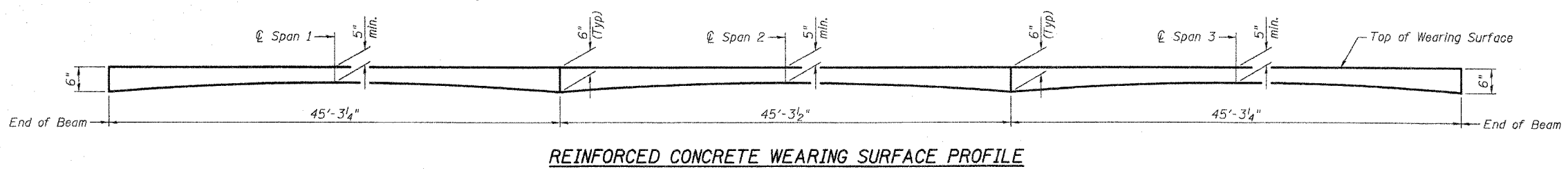
CROSS SECTION
(Looking West)



SECTION B-B
(Dim at right angles)



MIN LAP LENGTH
#4 Bars = 1'-4"



REINFORCED CONCRETE WEARING SURFACE PROFILE

ILLINOIS DEPARTMENT OF TRANSPORTATION

SHEET TITLE
SUPERSTRUCTURE

PROJECT
 IL ROUTE 146 OVER DUTCH CREEK
 FAP ROUTE 885 SECTION 104BR-1
 UNION COUNTY
 STATION 268+27.00
 STRUCTURE NUMBER 091-0059

PROJECT NO. 06056-5
 SCALE
 DATE 11/30/07
 DRAWN BY TFG/CFC
 CHECKED BY MCB/BD
 DRAWING NO.

COOMBE-BLOXDORF P.C.
 Engineers / Land Surveyors
 Springfield, Illinois
 Design Firm License No. 184-002703

4
 OF 13 SHTS

FILE NAME = \\bridge04\superstructure.dgn
 PLOT SCALE = 800000' / 1" / IN.
 PLOT DATE = 11/30/07