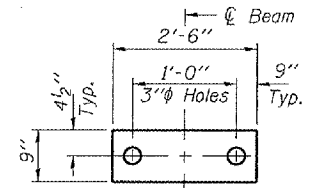


STATE OF ILLINOIS
DEPARTMENT OF TRANSPORTATION

ROUTE NO.	SECTION	COUNTY	SHEETS	SHEET	SHEET NO. 2
FA 776		SALINE	14	8	3 SHEETS
FED. ROAD DIST. NO. 7	ILLINOIS	FED. AID PROJECT-			

Contract Number: 78035
* (1051-1, 121-1, 1241-1)
36"



FABRIC BEARING PAD
(4 required)

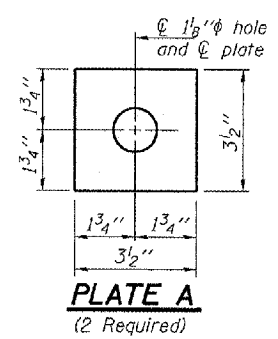
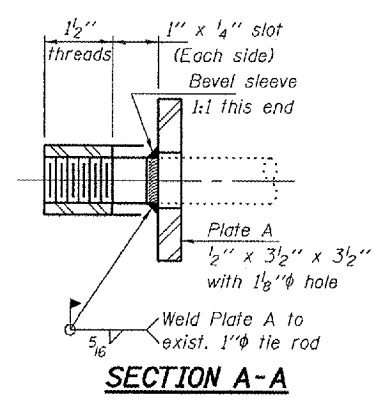
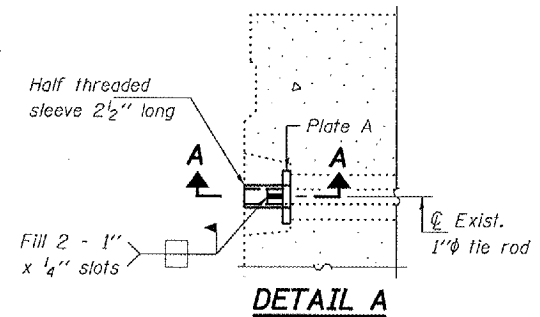


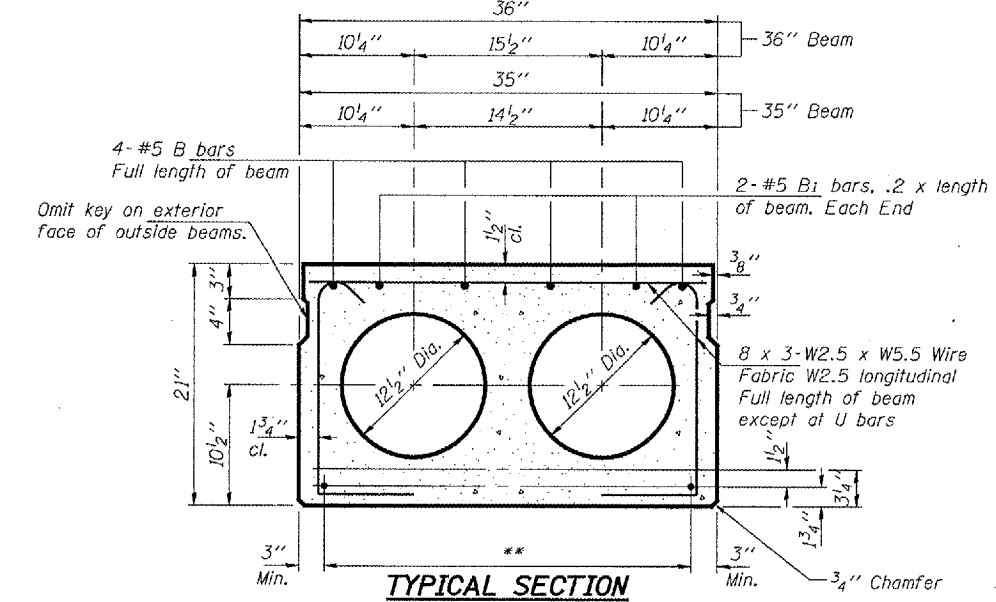
PLATE A
(2 Required)



SECTION A-A



DETAIL A



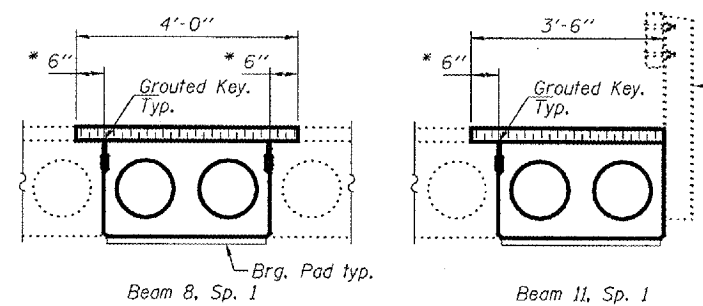
TYPICAL SECTION

1/2" Strands, Each Strand Stressed to 30,900 Lbs.
8-Strands 1 3/4" up, 4-Strands 3 1/4" up, 2-Strands 9" up

TRANSVERSE PLACEMENT GUIDELINES

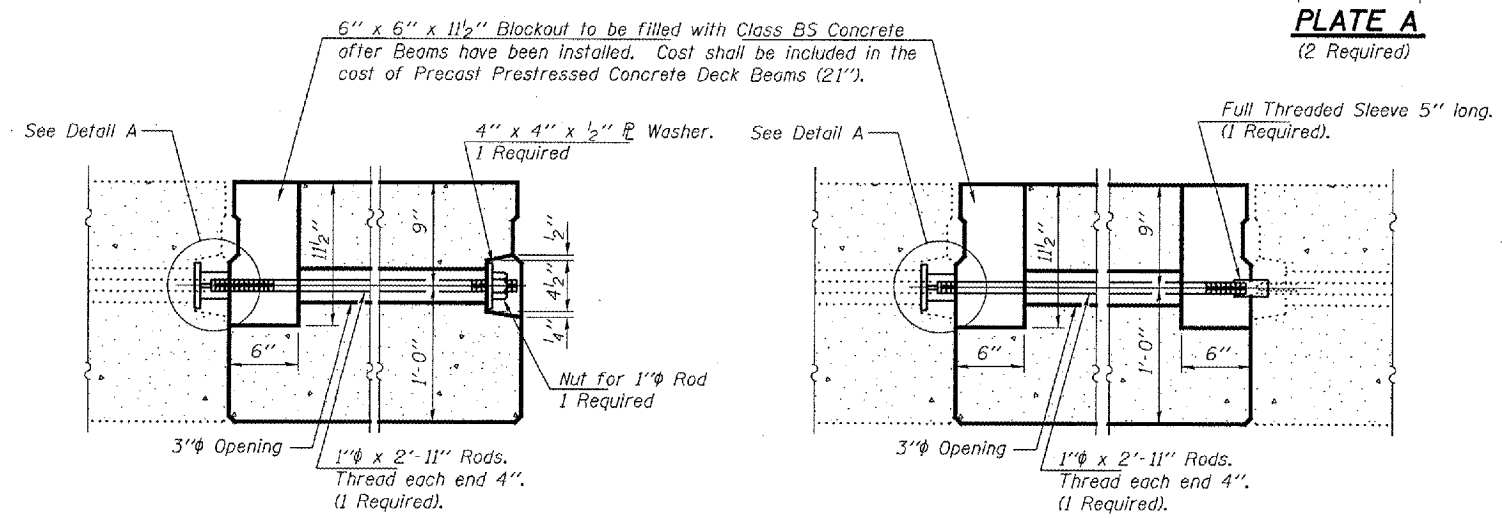
1. Place strands symmetrically about centerline of beam.
2. The minimum distance from center to center of strands in all directions shall be 2".
3. The minimum clearance from strand to dowel hole shall be 1/2".
4. The minimum clearance from strand to void shall be 1/2".

Vertical placement of strands shall not be adjusted to satisfy the above guidelines.



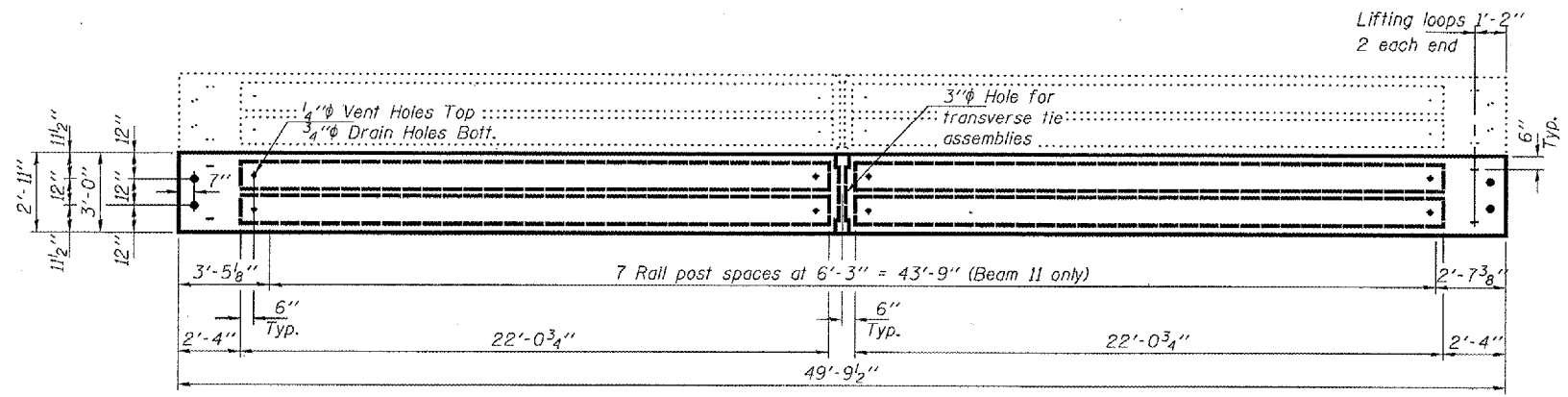
PARTIAL CROSS SECTION
(Looking South)

* Limits of HMA surface removal.

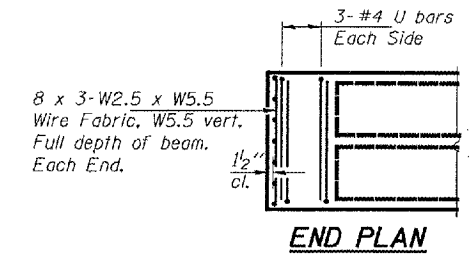


TRANSVERSE TIE ASSEMBLY
(Typ. span 1 beam 11 replacement)

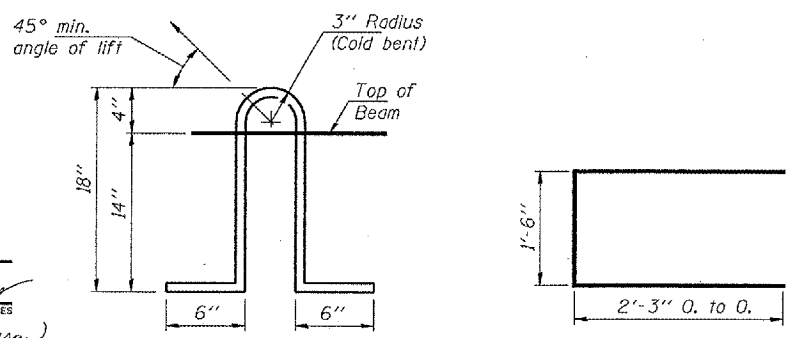
TRANSVERSE TIE ASSEMBLY
(Typ. span 1 beam 8 replacement)



PLAN



END PLAN



LIFTING LOOP DETAIL

BAR U

NOTES

Prestressing steel shall be uncoated high strength, low relaxation 7-wire strand, Grade 270. The nominal diameter shall be 1/2" and the nominal cross-sectional area shall be 0.153 sq. in. Lifting loops shall be 2-1/2"-270 ksi strands, as shown. The 1" rods in the transverse tie assembly shall be tightened to a snug fit and the threads set. Pockets that receive transverse tie bar on outside shall be filled with grout after transverse tie assembly is in place. Non prestressing steel shall conform to ASTM A 706 (IL MOD), Grade 60. The bearing seat surfaces shall be adjusted by shimming to assure firm and even bearing. Two 1/8" fabric adjusting shims of the dimensions shown shall be provided for each bearing. Keyway surfaces shall be cleaned to remove form oil or other bond breaking material prior to shipment of the beams. Cleaning shall be done by sandblasting the keyway areas between top of the beam and the bottom edge of the key. Corrosion Inhibitor, per Article 1020.05(b)(12) of the Standard Specifications, shall be used in the concrete for precast prestressed concrete deck beams. Required Release Strength, f'ci, shall be 4000 p.s.i.

BILL OF MATERIAL

Item	Unit	Total
Precast Prestressed Conc. Deck Bms. (21')	Sq. Ft.	295

REPAIR DETAILS
FA 776 OVER RECTOR CREEK
SALINE COUNTY
SN 083-0031

DESIGNED	AJB
CHECKED	VHV
DRAWN	baliva
CHECKED	AJB VHV

JANUARY 3, 2008
EXAMINED *Carl Proyer*
ENGINEER OF STRUCTURAL SERVICES
PASSED *Ralph E. Anderson*
ENGINEER OF BRIDGES AND STRUCTURES