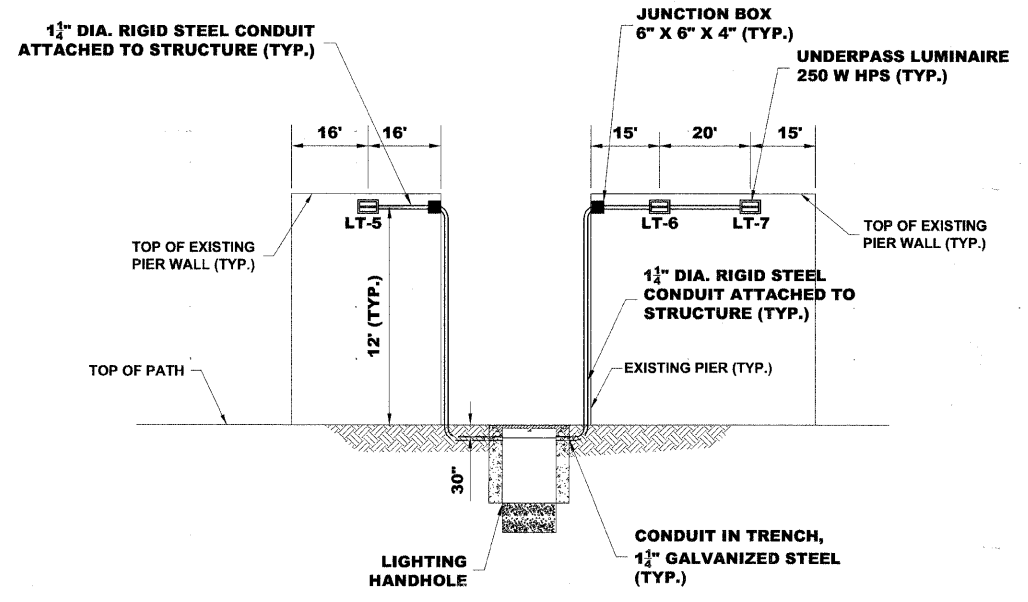


PLAN
AT SOUTH SIDE OF OVERPASS WALL NO. 1 AND SOUTH SIDE OF SOUTH ABUTMENT WALL



UNDERPASS LIGHTING DETAILS
AT SOUTH SIDE OF OVERPASS WALL NO. 1 AND SOUTH SIDE OF SOUTH ABUTMENT WALL

Drawing file: W:\Projects\06000085 - Prairie Path Improv\Site Plan.dwg Jan 04, 2008 - 11:23am

	◆ Civil Engineers	9933 Roosevelt Road
	◆ Municipal Consultants	Westchester, Illinois 60154-2780
	◆ Established 1911	Phone: 708/865-0300
		Fax: 708/865-1212

**ILLINOIS PRAIRIE PATH IMPROVEMENTS
VILLAGE OF BELLWOOD, ILLINOIS**

**OVERPASS LIGHTING PLAN
& LIGHTING DETAILS**

ATB 12-19-07	SCALE: 1" = 20'	7 / 11
LEV 11-26-07	DRAWN BY: MK/LEV	
LEV 11-14-07	BOOK NO.: AERIAL	
PER IDOT REVIEW MK 5-22-07	DATE: 2-9-07	
REVISION:	E.H.E. NO.: 080-03-08580	OF