

F. A. RTE.	SECTION	COUNTY	TOTAL SHEETS	SHEET NO.
261103-00148-00-PV	DUPAGE	58	15	
STA. 110+00 TO STA. 115+30.45				
FED. ROAD DISTRICT NO. 7 ILLINOIS FED. AID PROJECT M-8003(521)				

CONTRACT NO. 83952
CURB & GUTTER, TYPE B-6.12

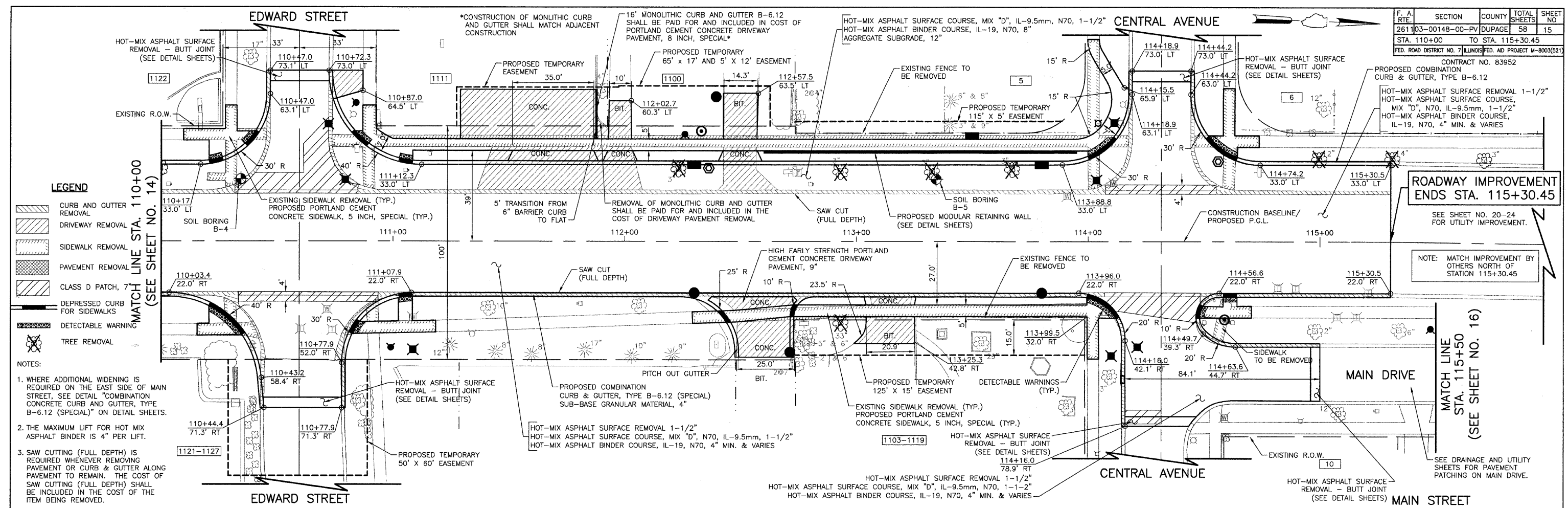
HOT-MIX ASPHALT SURFACE REMOVAL 1-1/2"
HOT-MIX ASPHALT SURFACE COURSE,
MIX "D", N70, IL-9.5mm, 1-1/2"
HOT-MIX ASPHALT BINDER COURSE,
IL-19, N70, 4" MIN. & VARIES

**ROADWAY IMPROVEMENT
ENDS STA. 115+30.45**

SEE SHEET NO. 20-24
FOR UTILITY IMPROVEMENT.

NOTE: MATCH IMPROVEMENT BY
OTHERS NORTH OF
STATION 115+30.45

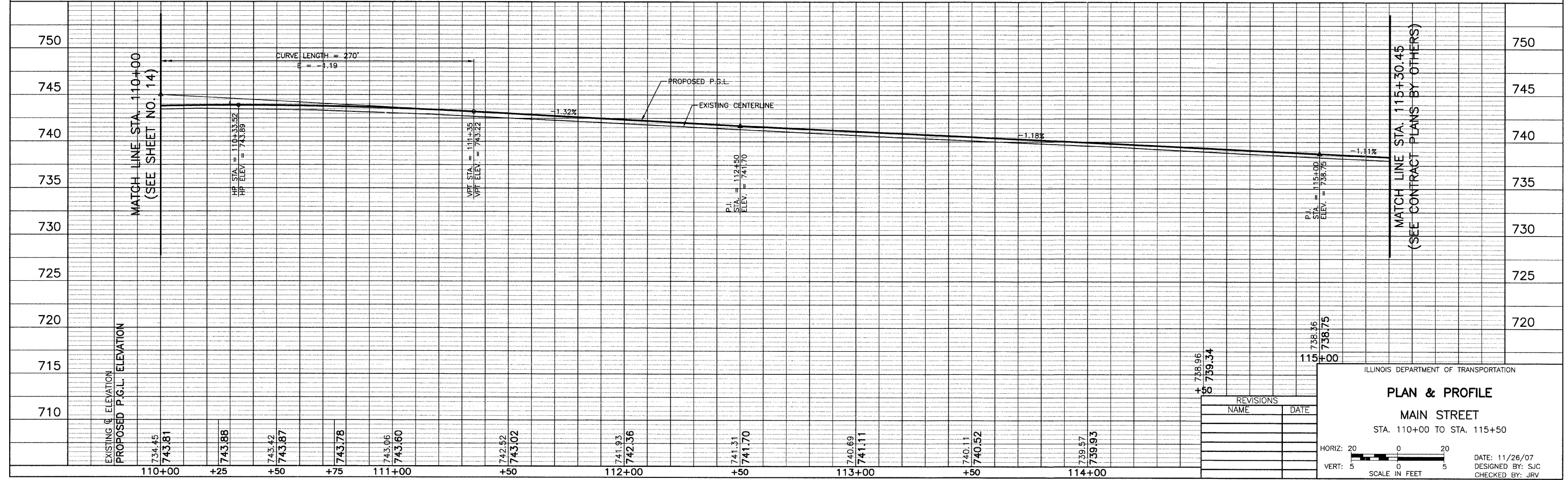
SEE DRAINAGE AND UTILITY
SHEETS FOR PAVEMENT
PATCHING ON MAIN DRIVE.



LEGEND

- CURB AND GUTTER REMOVAL
- DRIVEWAY REMOVAL
- SIDEWALK REMOVAL
- PAVEMENT REMOVAL
- CLASS D PATCH, 7"
- DEPRESSED CURB FOR SIDEWALKS
- DETECTABLE WARNING
- TREE REMOVAL

- NOTES:
- WHERE ADDITIONAL WIDENING IS REQUIRED ON THE EAST SIDE OF MAIN STREET, SEE DETAIL "COMBINATION CONCRETE CURB AND GUTTER, TYPE B-6.12 (SPECIAL)" ON DETAIL SHEETS.
 - THE MAXIMUM LIFT FOR HOT MIX ASPHALT BINDER IS 4" PER LIFT.
 - SAW CUTTING (FULL DEPTH) IS REQUIRED WHENEVER REMOVING PAVEMENT OR CURB & GUTTER ALONG PAVEMENT TO REMAIN. THE COST OF SAW CUTTING (FULL DEPTH) SHALL BE INCLUDED IN THE COST OF THE ITEM BEING REMOVED.



REVISIONS	
NAME	DATE

ILLINOIS DEPARTMENT OF TRANSPORTATION

PLAN & PROFILE

MAIN STREET

STA. 110+00 TO STA. 115+30.45

HORIZ: 20 0 20
VERT: 5 0 5
SCALE IN FEET

DATE: 11/26/07
DESIGNED BY: SJC
CHECKED BY: JRJ