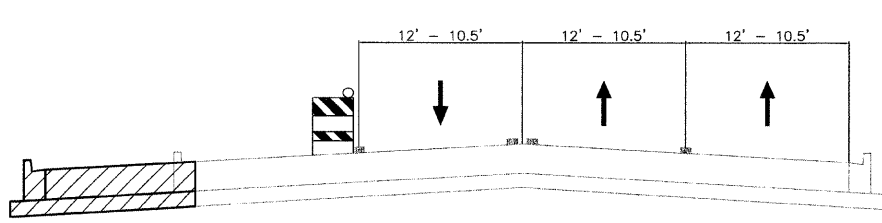


LEGEND

- WORK ZONE
- SINGLE LANE OF THRU TRAFFIC
- TEMPORARY TRAFFIC SIGN
- TYPE II BARRICADES (OR DRUMS) WITH MONODIRECTIONAL STEADY-BURN LIGHTS @ 50' CENTERS (25' SPACING IN TAPERS AND 10' SPACING IN RADII)



TYPICAL SECTION - TEMPORARY LANE CLOSURE
(SEE MOT NOTES FOR PERMITTED HOURS)

REVISIONS	
NAME	DATE

ILLINOIS DEPARTMENT OF TRANSPORTATION

MAINTENANCE OF TRAFFIC

MAIN STREET

STAGE 1

50 0 50
SCALE IN FEET

DATE: 11/26/07
DESIGNED BY: SJC
CHECKED BY: JRJ