

1 STA. 103+52, 34' LT.
VILLAGE STRUCTURE NO. SN618060
SAN. MH TO BE ADJ.
EXIST. RIM = 737.76
PROP. RIM = 738.25

1 STA. 104+59, 46.6' LT.
INLET T-A
T-1 F & OPEN LID
RIM = 736.84
INV = 733.74 (12" NE)

2 STA. 104+75, 33.0' LT.
INLET T-A
T-3 F & G
RIM = 736.52
INV = 733.65 (12" W)

3 STA. 104+75, 40.8' LT.
CB T-A, 4' DIA.
T-1 F & CLOSED LID
RIM = 736.71
INV = 733.60 (12" E)
INV = 733.53 (12" N)
INV = 733.60 (12" SW)

11 STA. 104+28, 40.0' RT.
INLET T-A
T-1 F & OPEN LID
RIM = 737.45
INV = 734.21 (12" NW)

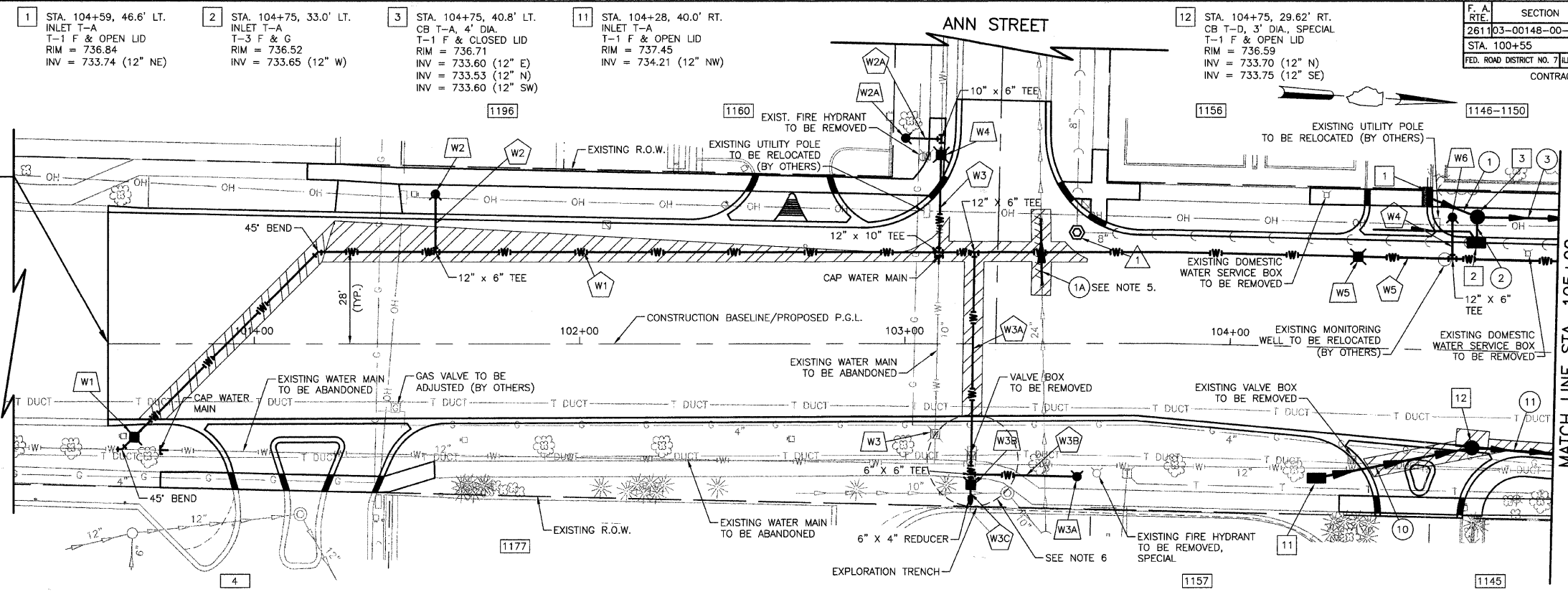
12 STA. 104+75, 29.62' RT.
CB T-D, 3' DIA., SPECIAL
T-1 F & OPEN LID
RIM = 736.59
INV = 733.70 (12" N)
INV = 733.75 (12" SE)

F.A. RITE	SECTION	COUNTY	TOTAL SHEETS	SHEET NO.
261103-00148-00-PV	DUPAGE	58	21	
STA. 100+55		TO STA. 105+00		
FED. ROAD DISTRICT NO. 7 ILLINOIS FED. AID PROJECT M-8003(521)				
CONTRACT NO. 83952				

- W1 STA. 100+63, 28' RT.
VALVE VAULT, T-A, 5' DIA.
T-1 F & CLOSED LID
w/12" VALVE
RIM = 739.03
- W2 STA. 101+56, 46' LT.
FH w/AUX. VALVE & VALVE BOX
- W2A STA. 103+00, 63' LT.
FH w/AUX. VALVE & VALVE BOX
- W3 VALVE VAULT TO BE FILLED
- W3A STA. 103+53, 41' RT.
FH w/AUX. VALVE & VALVE BOX
- W3B STA. 103+21, 43' RT.
VALVE BOX 6" W/ 6" VALVE
- W4 STA. 103+10, 58' LT.
VALVE VAULT, T-A, 5' DIA.
T-1 F & CLOSED LID
w/10" VALVE
RIM = 737.62
- W5 STA. 104+39, 28' LT.
VALVE VAULT, T-A, 5' DIA.
T-1 F & CLOSED LID
w/12" VALVE
RIM = 737.11
- W6 STA. 104+67, 41' LT.
FH w/AUX. VALVE & VALVE BOX

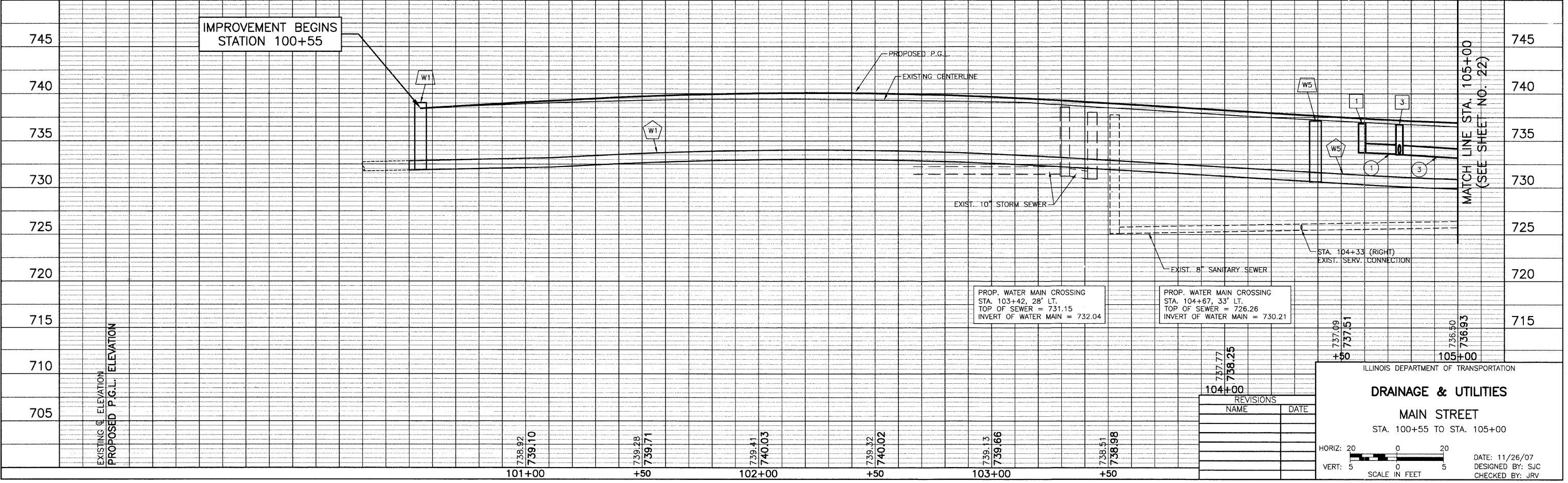
IMPROVEMENT BEGINS
STATION 100+55

- W1 400' - 12" D.I. WATER MAIN
T.B.F. = 288.0 C.Y.
- W2 17' - 6" D.I. WATER MAIN
T.B.F. = 11.6 C.Y.
- W2A 11' - 6" D.I. WATER MAIN
T.B.F. = 7.5 C.Y.
- W3 30' - 10" D.I. WATER MAIN
T.B.F. = 21.6 C.Y.
- W3A 66' - 6" D.I. WATER MAIN
T.B.F. = 44.9 C.Y.
- W3B 33' - 6" D.I. WATER MAIN
T.B.F. = 22.4 C.Y.
- W3C 5' - 6" D.I. WATER MAIN
T.B.F. = 3.4 C.Y.
- W4 12' - 6" D.I. WATER MAIN
T.B.F. = 8.2 C.Y.
- W5 293' - 12" D.I. WATER MAIN
T.B.F. = 211.0 C.Y.



- NOTES:
- WATER SERVICES ARE BEING REPLACED AT EACH ADDRESS ON MAIN STREET WITHIN THE PROJECT LIMIT WITH CORPORATION STOP AND WATER SERVICE LINE TO THE R.O.W.
 - SANITARY SERVICES ARE BEING REPLACED AT EACH ADDRESS ON THE EAST SIDE OF MAIN STREET WITHIN THE PROJECT LIMIT WITH A SANITARY SEWER CLEAN OUT AND SANITARY SEWER SERVICE CONNECTION, TYPE 1, 2, OR 3 (SEE DETAIL SHEET) TO THE R.O.W. REPLACEMENT IS SHOWN DUE TO POTENTIAL CONFLICTS WITH NEW WATER MAIN INSTALLATION.
 - WATER SHUT DOWNS TO MAKE CONNECTIONS TO EXISTING MAINS SHALL BE LIMITED AS DIRECTED BY THE ENGINEER. THE CONTRACTOR WILL BE REQUIRED TO INSTALL AND CLOSE THE NEW VALVE AT THE POINTS OF CONNECTION IN ORDER TO REINSTATE PRESSURE ON THE EXISTING SYSTEM, PRIOR TO PROCEEDING WITH THE BALANCE OF THE NEW WATER MAIN CONSTRUCTION.
 - WATER MAIN CONNECTIONS ARE NOT PAID FOR SEPARATELY BUT SHALL BE INCLUDED IN THE COST OF WATER MAIN PIPE AND FITTINGS USED TO MAKE THE CONNECTION UNLESS "CONNECT TO EXISTING WATER MAIN (NON-PRESSURE)" IS NOTED.
 - EXPLORATION TRENCH MUST BE CONDUCTED TO DETERMINE THE ELEVATION OF THE EXISTING 24" STORM SEWER PRIOR TO PROCEEDING WITH THE WATER MAIN INSTALLATION. THIS WILL DETERMINE IF THE EXISTING SEWER NEEDS TO BE REPLACED WITH WATER MAIN QUALITY PIPE.
 - EXPLORATION TRENCH MUST BE CONDUCTED TO DETERMINE THE OFFSET OF WATER MAIN AND VALVE BOX NOTED IN ORDER TO KEEP THE EXISTING WATER MAIN LIVE UNTIL THE TRANSFER TO PROPOSED WATER MAIN.

- LEGEND
- 1A 20' - 24" SS, WATER MAIN QUALITY PIPE, T-2
T.B.F. = 25.9 CU. YD.
 - 1 14' - 12" SS, CL A, T-1 @ 1.0%
T.B.F. = 2.3 CU. YD.
 - 2 6' - 12" SS, CL A, T-1 @ 1.0%
T.B.F. = 0.6 CU. YD.
 - 3 57' - 12" SS, CL A, T-1 @ 1.5%
T.B.F. = 10.5 CU. YD.
 - 10 46' - 12" SS, CL A, T-1 @ 1.0%
T.B.F. = 4.7 CU. YD.
 - 11 88' - 12" SS, CL A, T-1 @ 1.0%
T.B.F. = 11.7 CU. YD.
- CLASS D PATCH, 7"
PIPE UNDERDRAIN, FABRIC LINED TRENCH 4" (20' PER LOCATION)



REVISIONS	
NAME	DATE

ILLINOIS DEPARTMENT OF TRANSPORTATION

DRAINAGE & UTILITIES

MAIN STREET

STA. 100+55 TO STA. 105+00

HORIZ: 20
VERT: 5
SCALE IN FEET

DATE: 11/26/07
DESIGNED BY: SJC
CHECKED BY: JRJ