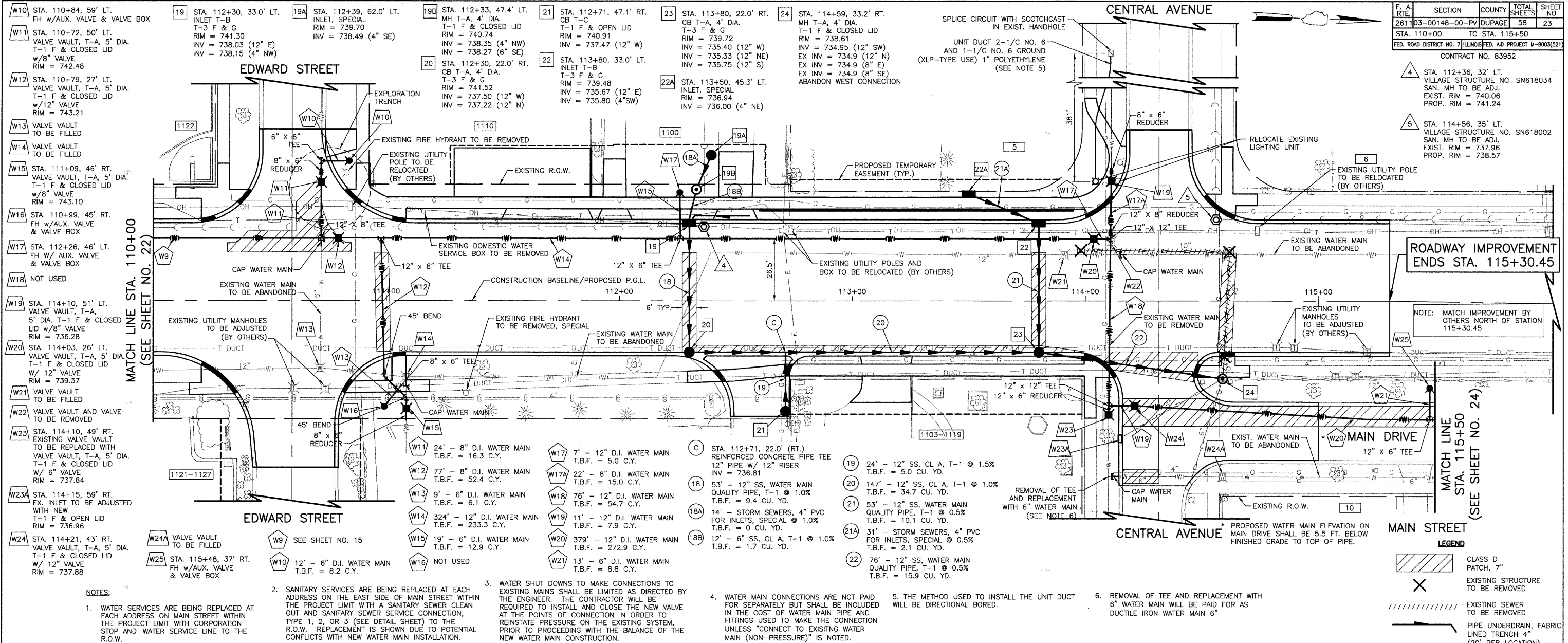


F. A. RITE.	SECTION	COUNTY	TOTAL SHEETS	SHEET NO.
261103-00148-00-PV	DUPAGE	58	23	
STA. 110+00 TO STA. 115+50				
FED. ROAD DISTRICT NO. 7 ILLINOIS FED. AID PROJECT M-8003(521)				
CONTRACT NO. 83952				

- 4. STA. 112+36, 32' LT. VILLAGE STRUCTURE NO. SN618034 SAN. MH TO BE ADJ. EXIST. RIM = 740.06 PROP. RIM = 741.24
- 5. STA. 114+56, 35' LT. VILLAGE STRUCTURE NO. SN618002 SAN. MH TO BE ADJ. EXIST. RIM = 737.96 PROP. RIM = 738.57



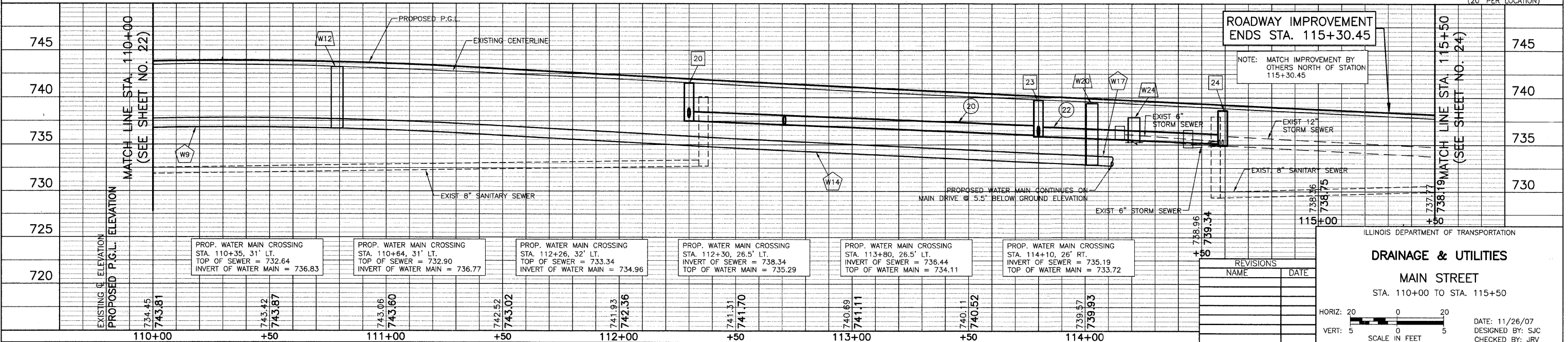
- W10 STA. 110+84, 59' LT. FH w/AUX. VALVE & VALVE BOX
- W11 STA. 110+72, 50' LT. VALVE VAULT, T-A, 5' DIA. T-1 F & CLOSED LID w/8" VALVE RIM = 742.48
- W12 STA. 110+79, 27' LT. VALVE VAULT, T-A, 5' DIA. T-1 F & CLOSED LID w/12" VALVE RIM = 743.21
- W13 VALVE VAULT TO BE FILLED
- W14 VALVE VAULT TO BE FILLED
- W15 STA. 111+09, 46' RT. VALVE VAULT, T-A, 5' DIA. T-1 F & CLOSED LID w/8" VALVE RIM = 743.10
- W16 STA. 110+99, 45' RT. FH w/AUX. VALVE & VALVE BOX
- W17 STA. 112+26, 46' LT. FH w/AUX. VALVE & VALVE BOX
- W18 NOT USED
- W19 STA. 114+10, 51' LT. VALVE VAULT, T-A, 5' DIA. T-1 F & CLOSED LID w/8" VALVE RIM = 736.28
- W20 STA. 114+03, 26' LT. VALVE VAULT, T-A, 5' DIA. T-1 F & CLOSED LID w/12" VALVE RIM = 739.37
- W21 VALVE VAULT TO BE FILLED
- W22 VALVE VAULT AND VALVE TO BE REMOVED
- W23 STA. 114+10, 49' RT. EXISTING VALVE VAULT TO BE REPLACED WITH VALVE VAULT, T-A, 5' DIA. T-1 F & CLOSED LID w/6" VALVE RIM = 737.84
- W23A STA. 114+15, 59' RT. EX. INLET TO BE ADJUSTED WITH NEW T-1 F & OPEN LID RIM = 736.96
- W24 STA. 114+21, 43' RT. VALVE VAULT, T-A, 5' DIA. T-1 F & CLOSED LID w/12" VALVE RIM = 737.88
- W24A VALVE VAULT TO BE FILLED
- W25 STA. 115+48, 37' RT. FH w/AUX. VALVE & VALVE BOX

MATCH LINE STA. 110+00 (SEE SHEET NO. 22)

ROADWAY IMPROVEMENT ENDS STA. 115+30.45

NOTE: MATCH IMPROVEMENT BY OTHERS NORTH OF STATION 115+30.45

MATCH LINE STA. 115+50 (SEE SHEET NO. 24)



PROPOSED P.G.L. ELEVATION	PROPOSED P.G.L. ELEVATION	PROPOSED P.G.L. ELEVATION	PROPOSED P.G.L. ELEVATION	PROPOSED P.G.L. ELEVATION	PROPOSED P.G.L. ELEVATION	PROPOSED P.G.L. ELEVATION
734.45	743.81	743.42	743.87	743.06	743.60	742.52
743.81	743.81	743.81	743.81	743.81	743.81	743.81

PROP. WATER MAIN CROSSING	PROP. WATER MAIN CROSSING	PROP. WATER MAIN CROSSING	PROP. WATER MAIN CROSSING	PROP. WATER MAIN CROSSING	PROP. WATER MAIN CROSSING	PROP. WATER MAIN CROSSING
STA. 110+35, 31' LT. TOP OF SEWER = 732.64 INVERT OF WATER MAIN = 736.83	STA. 112+30, 26.5' LT. TOP OF SEWER = 732.90 INVERT OF WATER MAIN = 736.77	STA. 112+26, 32' LT. TOP OF SEWER = 733.34 INVERT OF WATER MAIN = 734.96	STA. 112+30, 26.5' LT. TOP OF SEWER = 738.34 INVERT OF WATER MAIN = 735.29	STA. 113+80, 22.0' RT. TOP OF SEWER = 736.44 INVERT OF WATER MAIN = 734.11	STA. 114+10, 26' RT. TOP OF SEWER = 735.19 INVERT OF WATER MAIN = 733.72	STA. 114+10, 26' RT. TOP OF SEWER = 735.19 INVERT OF WATER MAIN = 733.72

REVISIONS	
NAME	DATE

ILLINOIS DEPARTMENT OF TRANSPORTATION

DRAINAGE & UTILITIES

MAIN STREET

STA. 110+00 TO STA. 115+50

HORIZ: 20
VERT: 5

SCALE IN FEET

DATE: 11/26/07
DESIGNED BY: SJC
CHECKED BY: JRV