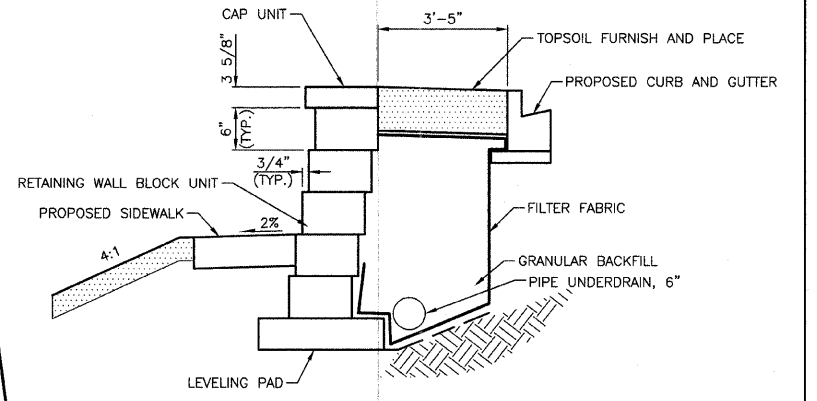


**MODULAR BLOCK RETAINING WALL PLAN VIEW**

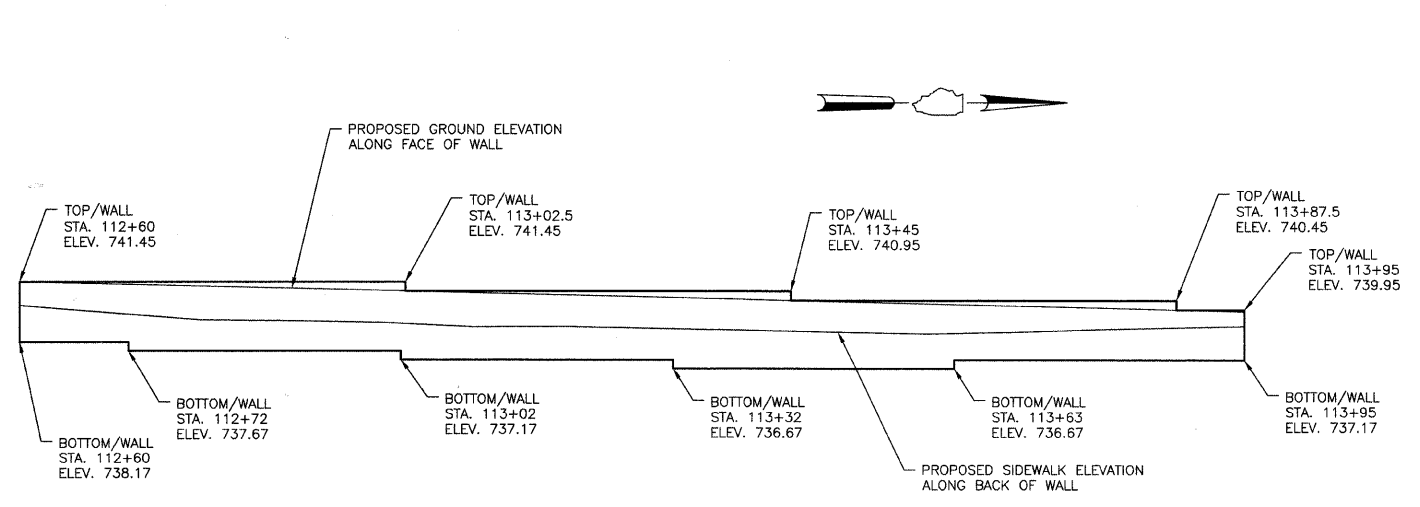
SCALE 1" = 10'



**MODULAR BLOCK RETAINING WALL**

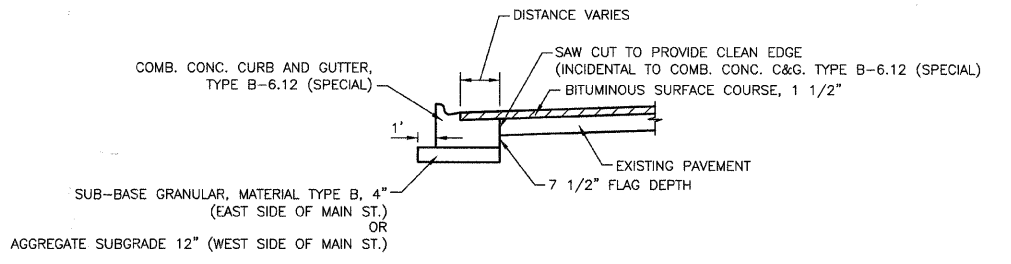
NOT TO SCALE

- NOTE: 1. PRIOR TO CONSTRUCTION OF THE RETAINING WALL, CONTRACTOR SHALL SUBMIT SHOP DRAWINGS.
2. ALL ITEMS SHOWN ABOVE ASSOCIATED WITH THE RETAINING WALL EXCEPT PROPOSED TOPSOIL SHALL BE INCLUDED IN THE PAY ITEM MODULAR RETAINING WALL SYSTEM.



**MODULAR BLOCK RETAINING WALL ELEVATION**

SCALE: HORIZONTAL 1" = 10'  
VERTICAL 1" = 5'



**COMBINATION CONCRETE CURB & GUTTER, TYPE B-6.12 (SPECIAL)**

NOTE: THE CURB AND GUTTER SHALL BE POURED MONOLITHICALLY WITH THE PAVEMENT WIDENING AREA

REVISIONS	
NAME	DATE

ILLINOIS DEPARTMENT OF TRANSPORTATION

**DETAILS**

**MAIN STREET**

DATE: 11/26/07  
DESIGNED BY: SJC  
CHECKED BY: JRV