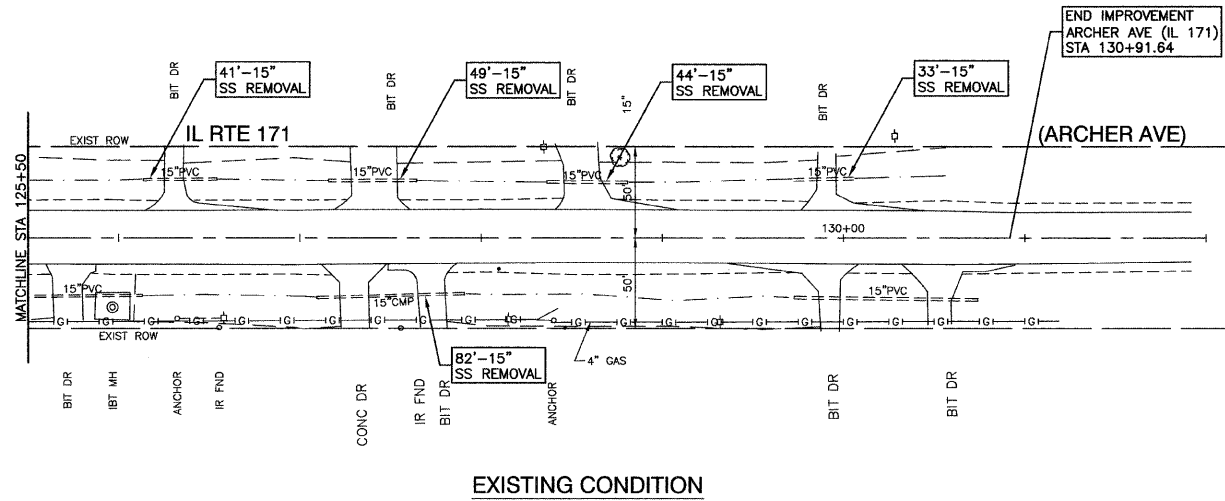
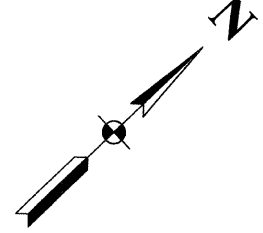
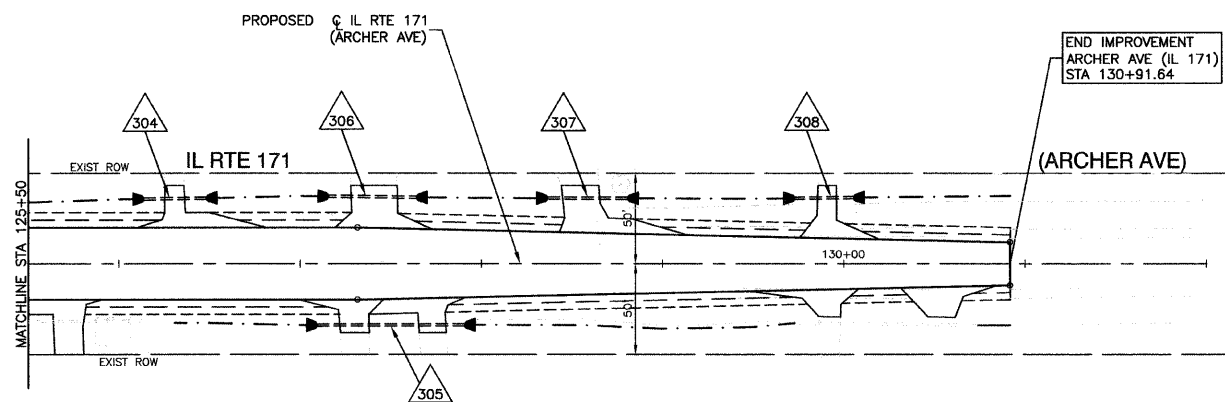


FAUJ. RTE.	SECTION	COUNTY	TOTAL SHEETS	SHEET NO.
0285	01-00052-00-FP	WILL	71	23
STA. 125+50		TO STA. END IMPROVEMENT		
FED. ROAD DIST. NO. 1	ILLINOIS	FED. AID PROJECT		

CONTRACT NO. 83956

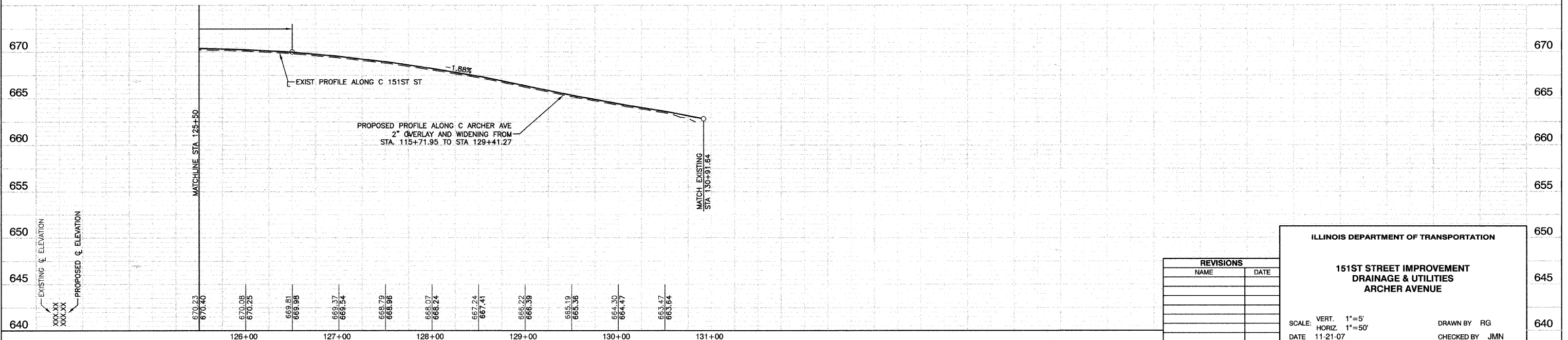


EXISTING CONDITION



PROPOSED IMPROVEMENT

- 304 35'-15" SST1 RCP CL IV @ 0.71% (4.0)
W/2-PRECAST RC RES, 15"
STA 126+13.65, 35.7' LT, SW INV=667.58
STA 126+48.40, 36.1' LT, NE INV=667.33
- 305 81'-15" SST1 RCP CL IV @ 1.60% (10.0)
W/2-PRECAST RC RES, 15"
STA 127+09.32, 33.9' RT, SW INV=667.30
STA 127+90.76, 33.8' RT, NE INV=666.00
- 306 49'-15" SST1 RCP CL IV @ 1.53% (6.0)
W/2-PRECAST RC RES, 15"
STA 127+15.66, 37.1' LT, SW INV=666.30
STA 127+64.24, 36.6' LT, NE INV=665.55
- 307 45'-15" SST1 RCP CL IV @ 2.15% (5.0)
W/2-PRECAST RC RES, 15"
STA 128+36.33, 36.2' LT, SW INV=664.25
STA 128+80.88, 36.1' LT, NE INV=663.28
- 308 33'-15" SST1 RCP CL IV @ 2.48% (3.0)
W/2-PRECAST RC RES, 15"
STA 129+72.66, 36.1' LT, SW INV=661.09
STA 130+05.48, 36.5' LT, NE INV=660.27



REVISIONS	
NAME	DATE

ILLINOIS DEPARTMENT OF TRANSPORTATION

**151ST STREET IMPROVEMENT
DRAINAGE & UTILITIES
ARCHER AVENUE**

SCALE: VERT. 1"=5'
HORIZ. 1"=50'

DATE 11-21-07

DRAWN BY RG
CHECKED BY JMN