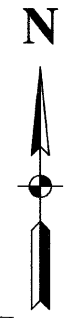
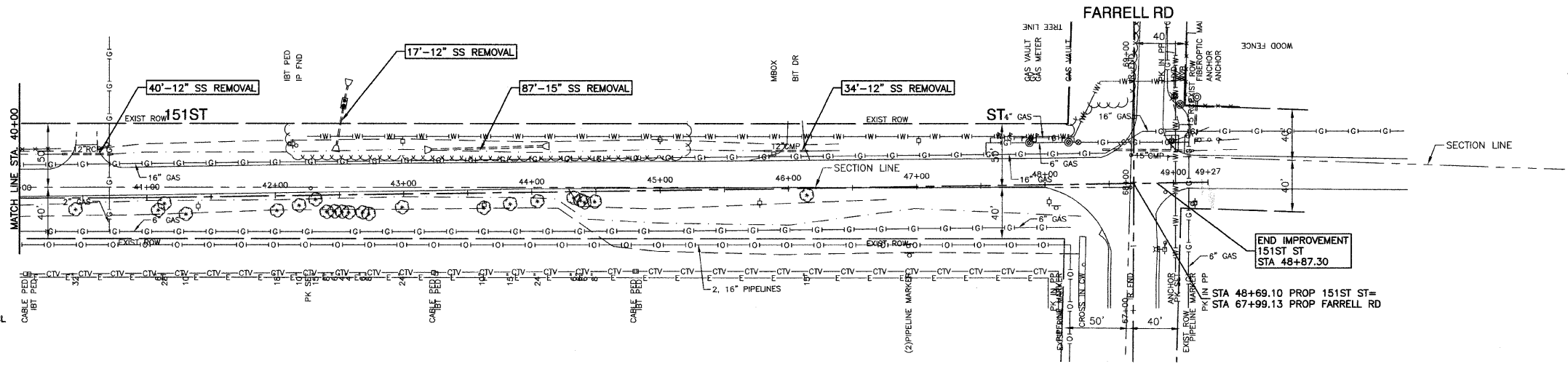


FILE NO.	SECTION	COUNTY	TOTAL SHEETS	SHEET NO.
0285	01-00052-00-FP	WILL	71	27
STA. 40+00	TO STA. END IMPROVEMENT			
FED. ROAD DIST. NO. 1	ILLINOIS	FED. AID PROJECT		

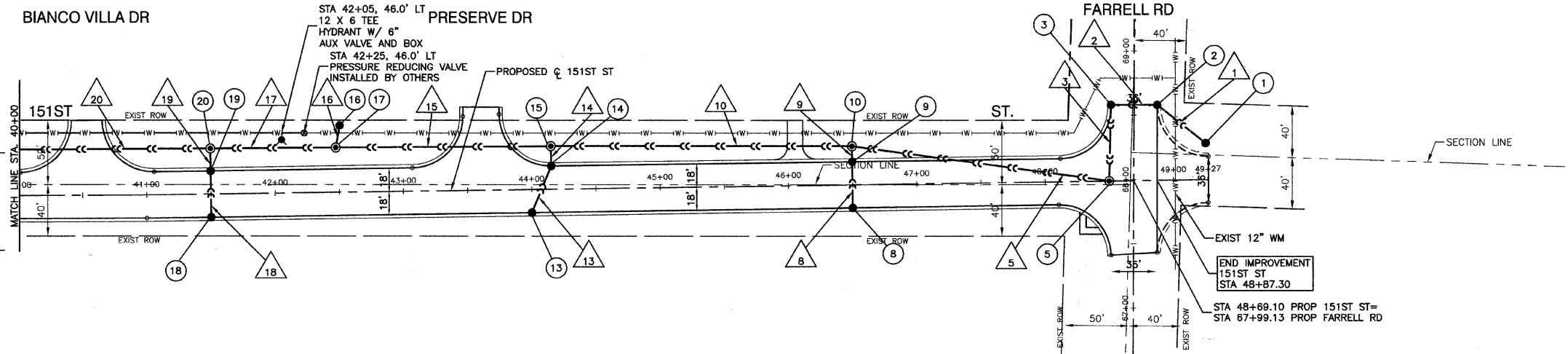
CONTRACT NO. 83956



1 STA 49+26, 28.3' LT CB TA 4" DIA T24 F&G RIM EL=710.40 NW 12" INV=702.18	13 STA 44+00, 18' RT CB TA 4" DIA T24 F&G RIM EL=705.56 NE 12" INV=698.20
2 STA 48+88, 58.6' LT CB TA 4" DIA T24 F&G RIM EL=711.96 SE 12" INV=701.94 W 12" INV=701.69	14 STA 44+15, 18' LT CB TA 4" DIA T24 F&G RIM EL=705.96 SW 12" INV=696.43 N 12" INV=694.43
3 STA 48+52, 59.2' LT CB TA 4" DIA T24 F&G RIM EL=711.96 S 12" INV=693.76 E 15" INV=701.51 S 12" INV=701.41	15 STA 44+15, 33.5' LT MH TA 4" DIA T1F+CL RIM EL=706.30 S 12" INV=693.76 E 15" INV=691.86 W 15" INV=691.76
5 STA 48+50, MH TA 4" DIA T1F+CL RIM EL=711.47 N 12" INV=700.81 NW 12" INV=700.71	16 STA 42+51, 51.9' LT MH TA 4" DIA T1F+CL RIM EL=702.50 EX. NE 12" INV=701.25 SW 12" INV=690.31
8 STA 46+50, 18' RT CB TA 4" DIA T24 F&G RIM EL=709.74 N 12" INV=702.71	17 STA 42+48, 34.8' LT MH TA 4" DIA T1F+CL RIM EL=702.00 NE 12" INV=690.05 E 15" INV=688.40 W 18" INV=688.05
9 STA 46+50, 18' LT CB TA 4" DIA T24 F&G RIM EL=709.74 S 12" INV=701.09 N 12" INV=699.09	18 STA 41+50, 18' RT CB TA 4" DIA T24 F&G RIM EL=699.39 S 12" INV=692.01
10 STA 46+50, 30.0' LT MH TA 4" DIA T1F+CL RIM EL=710.00 S 12" INV=698.55 SE 12" INV=696.55 W 15" INV=696.55	19 STA 41+50, 18' LT CB TA 4" DIA T24 F&G RIM EL=699.39 S 12" INV=698.39 N 12" INV=688.39
	20 STA 41+50, 35.5' LT MH TA 5" DIA T1F+CL RIM EL=700.50 S 12" INV=687.60 E 18" INV=686.10 W 24" INV=685.60

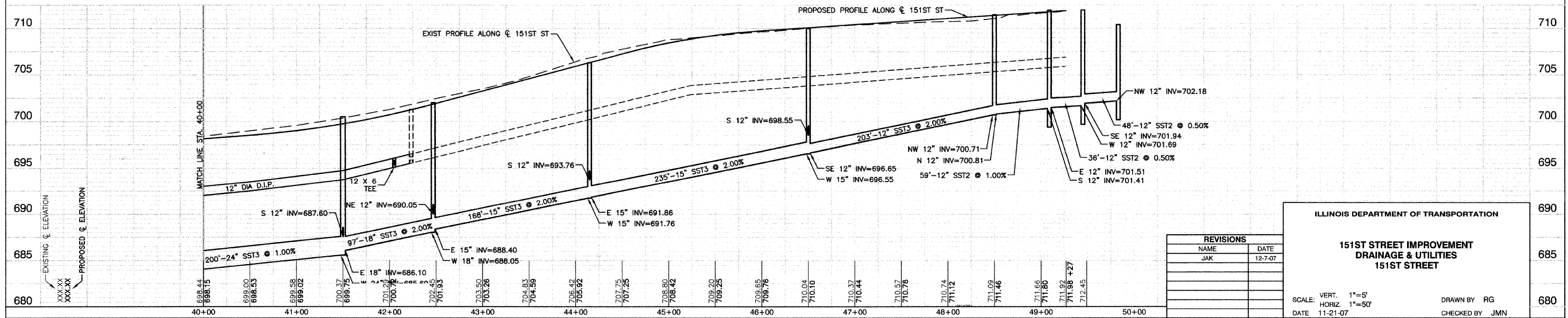


EXISTING CONDITION



PROPOSED IMPROVEMENT

1	48'-12" SST2 CL III @ 0.50% (0.0)
2	36'-12" SST2 CL III @ 0.50% (45.9)
3	59'-12" SST2 CL III @ 1.00% (78.1)
5	203'-12" SST3 CL IV @ 2.00% (208.4)
8	36'-12" SST2 CL III @ 4.50% (29.9)
9	12'-12" SST3 CL IV @ 4.50% (4.1)
10	235'-15" SST3 CL IV @ 2.00% (31.1)
13	39'-12" SST2 CL III @ 4.50% (37.5)
14	14'-12" SST3 CL IV @ 4.50% (4.6)
15	168'-15" SST3 CL IV @ 2.00% (108.0)
16	17'-12" SS WM REQ. @ 1.50% (0.0)
17	97'-18" SST3 CL IV @ 2.00% (0.0)
18	36'-12" SST2 CL III @ 4.50% (30.8)
19	18'-12" SST3 CL IV @ 4.50% (4.4)
20	200'-24" SST3 CL IV @ 1.00% (52.9)



REVISIONS	
NAME	DATE
JAK	12-7-07

ILLINOIS DEPARTMENT OF TRANSPORTATION

**151ST STREET IMPROVEMENT
DRAINAGE & UTILITIES
151ST STREET**

SCALE: VERT. 1"=5'
HORIZ. 1"=50'

DATE 11-21-07

DRAWN BY RG
CHECKED BY JMN