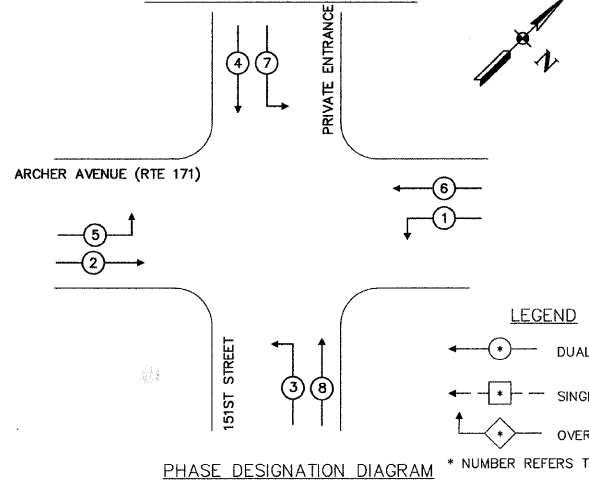


CONTRACT NO. 83956

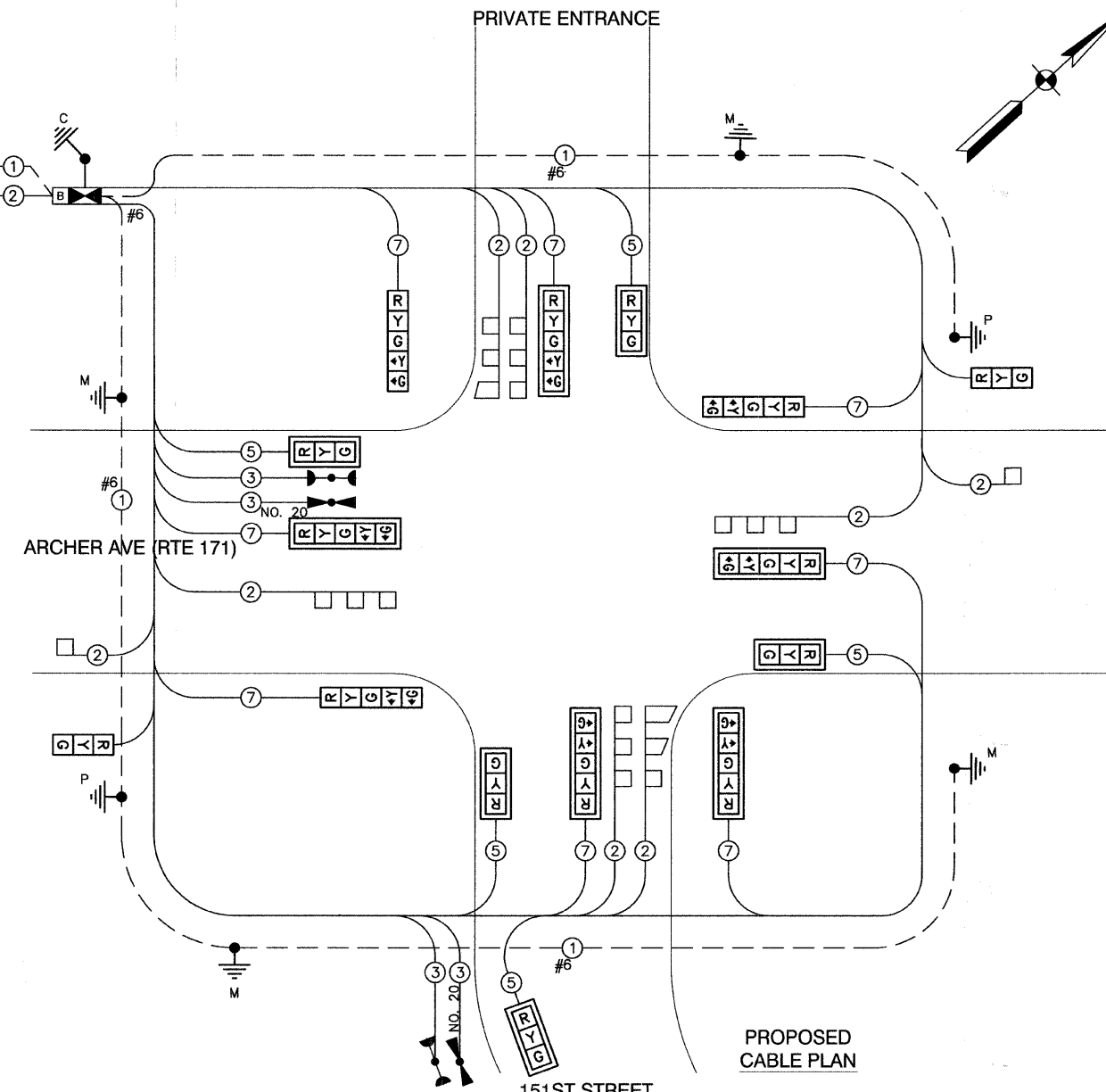
PROPOSED CONTROLLER SEQUENCE



PHASE DESIGNATION DIAGRAM * NUMBER REFERS TO ASSOCIATED PHASE

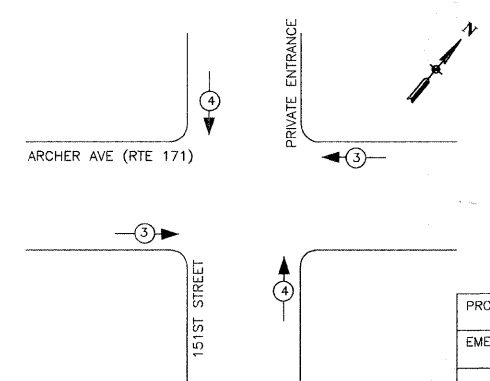
SCHEDULE OF QUANTITIES

ITEM	UNIT	QUAN
CONDUIT IN TRENCH, 2" DIA., GALVANIZED STEEL	FOOT	315
CONDUIT IN TRENCH, 2 1/2" DIA., GALVANIZED STEEL	FOOT	76
CONDUIT IN TRENCH, 3" DIA., GALVANIZED STEEL	FOOT	20
CONDUIT IN TRENCH, 4" DIA., GALVANIZED STEEL	FOOT	39
CONDUIT PUSHED, 2" DIA., GALVANIZED STEEL	FOOT	402
CONDUIT PUSHED, 2 1/2" DIA., GALVANIZED STEEL	FOOT	41
CONDUIT PUSHED, 3" DIA., GALVANIZED STEEL	FOOT	35
CONDUIT PUSHED, 4" DIA., GALVANIZED STEEL	FOOT	165
DOUBLE HANDHOLE	EACH	1
HEAVY DUTY HANDHOLE	EACH	9
ELECTRIC CABLE IN CONDUIT, SIGNAL NO. 14 3/C	FOOT	345
ELECTRIC CABLE IN CONDUIT, SIGNAL NO. 14 5/C	FOOT	1614
ELECTRIC CABLE IN CONDUIT, SIGNAL NO. 14 7/C	FOOT	1694
ELECTRIC CABLE IN CONDUIT, NO. 20 3/C, TWISTED, SHIELDED	FOOT	345
ELECTRIC CABLE IN CONDUIT, LEAD-IN, NO. 14 1 PAIR	FOOT	1935
ELECTRIC CABLE IN CONDUIT, SERVICE, NO. 6 2/C	FOOT	125
TRAFFIC SIGNAL POST, GALVANIZED STEEL 14 FT.	EACH	1
TRAFFIC SIGNAL POST, GALVANIZED STEEL 16 FT.	EACH	1
STEEL MAST ARM ASSEMBLY AND POLE, 36 FT.	EACH	1
STEEL MAST ARM ASSEMBLY AND POLE, 40 FT.	EACH	1
STEEL MAST ARM ASSEMBLY AND POLE, 46 FT.	EACH	1
STEEL MAST ARM ASSEMBLY AND POLE, 48 FT.	EACH	1
CONCRETE FOUNDATION, TYPE A	FOOT	8
CONCRETE FOUNDATION, TYPE C	FOOT	4
CONCRETE FOUNDATION, TYPE E 30-INCH DIAMETER	FOOT	30
CONCRETE FOUNDATION, TYPE E 36-INCH DIAMETER	FOOT	30
SIGNAL HEAD, L.E.D., 1-FACE, 3-SECTION, MAST ARM MOUNTED	EACH	4
SIGNAL HEAD, L.E.D., 1-FACE, 5-SECTION, MAST ARM MOUNTED	EACH	4
SIGNAL HEAD, L.E.D., 1-FACE, 3-SECTION, BRACKET MOUNTED	EACH	3
SIGNAL HEAD, L.E.D., 1-FACE, 5-SECTION, BRACKET MOUNTED	EACH	4
TRAFFIC SIGNAL BACKPLATE, LOUVERED	EACH	8
INDUCTIVE LOOP DETECTOR	EACH	8
DETECTOR LOOP, TYPE I	FOOT	811
LIGHT DETECTOR	EACH	4
LIGHT DETECTOR AMPLIFIER	EACH	1
FULL-ACTUATED CONTROLLER AND TYPE IV CABINET	EACH	1
SERVICE INSTALLATION, POLE MOUNT	EACH	1
TRENCH AND BACKFILL FOR ELECTRICAL WORK	FOOT	516
ELECTRIC CABLE IN CONDUIT, GROUNDING NO. 6 1C (GREEN)	FOOT	500
SIGN PANEL, TYPE 1	SQ FT	12
SIGN PANEL, TYPE 2	SQ FT	25
UNINTERRUPTIBLE POWER SUPPLY	EACH	1



PROPOSED CABLE PLAN

EMERGENCY VEHICLE PREEMPTION SEQUENCE



CABLE PLAN LEGEND

EXISTING	PROPOSED	DESCRIPTION
[Symbol]	[Symbol]	8" TRAFFIC SIGNAL SECTION
[Symbol]	[Symbol]	12" TRAFFIC SIGNAL SECTION
[Symbol]	[Symbol]	12" PEDESTRIAN SIGNAL SECTION
[Symbol]	[Symbol]	12" PEDESTRIAN SIGNAL SECTION
[Symbol]	[Symbol]	CONTROLLER CABINET
[Symbol]	[Symbol]	SERVICE INSTALLATION
[Symbol]	[Symbol]	UNINTERRUPTIBLE POWER SUPPLY
[Symbol]	[Symbol]	TELEPHONE CONNECTION
[Symbol]	[Symbol]	VEHICLE DETECTOR, INDUCTION LOOP
[Symbol]	[Symbol]	MAGNETIC DETECTOR
[Symbol]	[Symbol]	EMERGENCY VEHICLE LIGHT DETECTOR
[Symbol]	[Symbol]	CONFIRMATION BEACON
[Symbol]	[Symbol]	PUSHBUTTON DETECTOR
[Symbol]	[Symbol]	DENOTES NUMBER OF CONDUCTORS. ALL CABLE NO. 14 EXCEPT AS INDICATED. ALL LOOP DETECTOR CABLE TO BE SHIELDED.
[Symbol]	[Symbol]	GROUND CABLE IN CONDUIT NO. 6 SOLID COPPER (GREEN)
[Symbol]	[Symbol]	FIBER OPTIC CABLE IN CONDUIT NO. 62.5/125 2-MM12F SM12F
[Symbol]	[Symbol]	SIGNAL FACE WITH BACKPLATE "P" INDICATES PROGRAMMED HEAD
[Symbol]	[Symbol]	RAILROAD CONTROL CABINET
[Symbol]	[Symbol]	ILLUMINATED SIGN "NO LEFT TURN"
[Symbol]	[Symbol]	ILLUMINATED SIGN "NO RIGHT TURN"
[Symbol]	[Symbol]	GROUND ROD AT HANDHOLE (H), DOUBLE HANDHOLE (H), OR CONTROLLER (C)
[Symbol]	[Symbol]	GROUND ROD AT POST (P) OR MAST ARM POLE (MA)
[Symbol]	[Symbol]	GROUND ROD AT ELECTRIC SERVICE INSTALLATION

I.D.O.T. TRAFFIC SIGNAL INSTALLATION ELECTRICAL SERVICE REQUIREMENTS					TOTAL WATTAGE
TYPE	NO. LAMPS	WATTAGE INCAND.	LED	% OPERATION	
SIGNAL (RED)	15	135	17	0.50	128
(YELLOW)	15	135	25	0.25	94
(GREEN)	15	135	15	0.25	56
ARROW	16	135	12	0.10	19
PED. SIGNAL		90	25	1.00	
CONTROLLER	1	100	100	1.00	100
ILLUM. SIGN		84		0.05	
FLASHER				0.50	
ENERGY COSTS TO: IDOT				TOTAL =	397

FOUNDATION (DEPTH)	FT. (m)	CABLE SLACK	FT. (m)	VERTICAL	FT. (m)
TYPE A - POST	4 (1.2)	HANDHOLE	6.5 (2.0)	ALL FOUNDATIONS	3.5 (1.0)
D - CONTROLLER	4 (1.2)	DOUBLE HANDHOLE	13 (4.0)	MAST ARM (L) POLE	20'+L-2'
E - M. ARM POLE		SIGNAL POST	2 (1.0)	(8m+L-0.8m)	
24" (600mm)	10 (3.0)	CONTROLLER CAB.	1 (0.5)	BRACKET MOUNTED	13 (4.0)
30" (750mm)	15 (4.6)	FIBER OPTIC	13 (4.0)	PED. PUSHBUTTON	4 (1.2)
		ELECTRIC SERVICE	1 (0.5)	ELECTRIC SERVICE	13.5 (4.1)
		GROUND CABLE	1 (0.5)	SERVICE TO GROUND	13.5 (4.1)
				POST MOUNTED	6 (1.8)

PROPOSED EMERGENCY VEHICLE PREEMPTORS	
EMERGENCY VEHICLE PREEMPTORS	3 4
MOVEMENT	—

REVISIONS	
NAME	DATE
IDOT COMMENTS	12-5-07
IDOT COMMENTS	12-7-07
IDOT COMMENTS	12/20/07

ILLINOIS DEPARTMENT OF TRANSPORTATION

151ST STREET IMPROVEMENT CABLE PLAN

SCALE: VERT. N/A
HORIZ. N/A

DATE: 11-21-07

DRAWN BY: RG
CHECKED BY: JMN

ROBINSON ENGINEERING, LTD.
17000 SOUTH PARK AVENUE SOUTH HOLLAND, ILLINOIS 60462
(708) 381-8700 FAX (708) 381-3828
ILLINOIS DESIGN FIRM REGISTRATION NO. 184601128