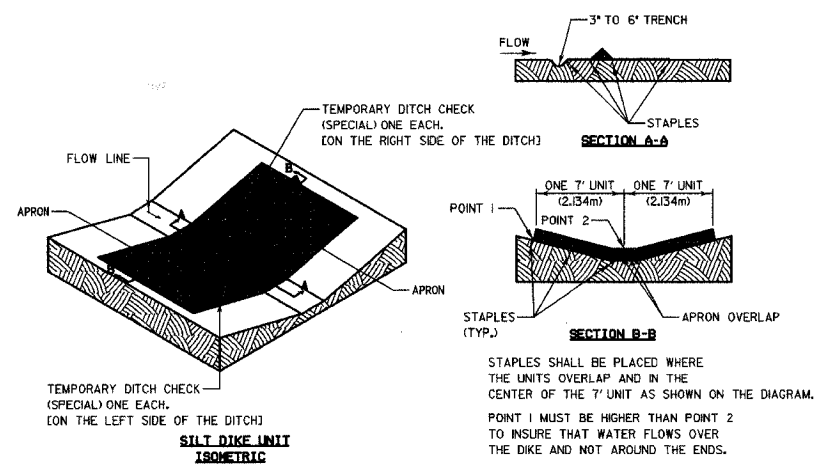


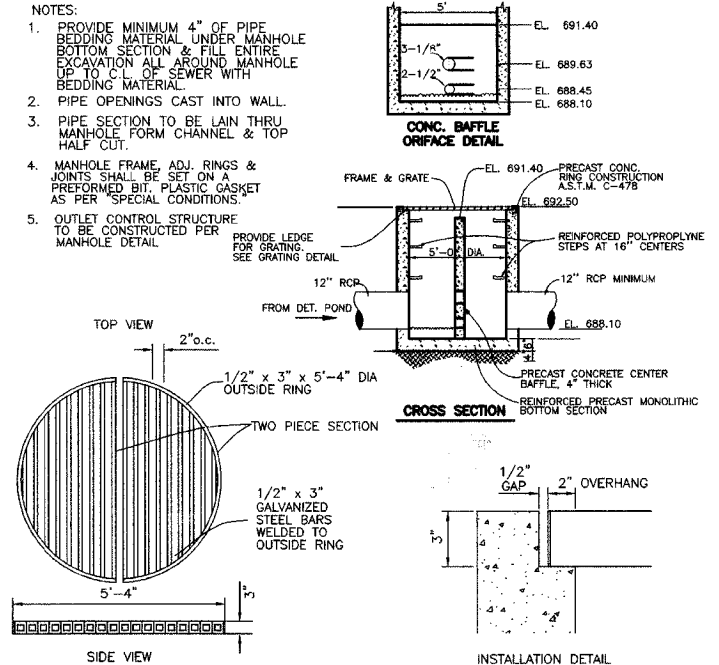
P&E	SECTION	COUNTY	TOTAL SHEETS	SHEET NO
*	06-00132-00-PK	WILL	15	11
STA.	TO STA.			

CONTRACT NUMBER 83974

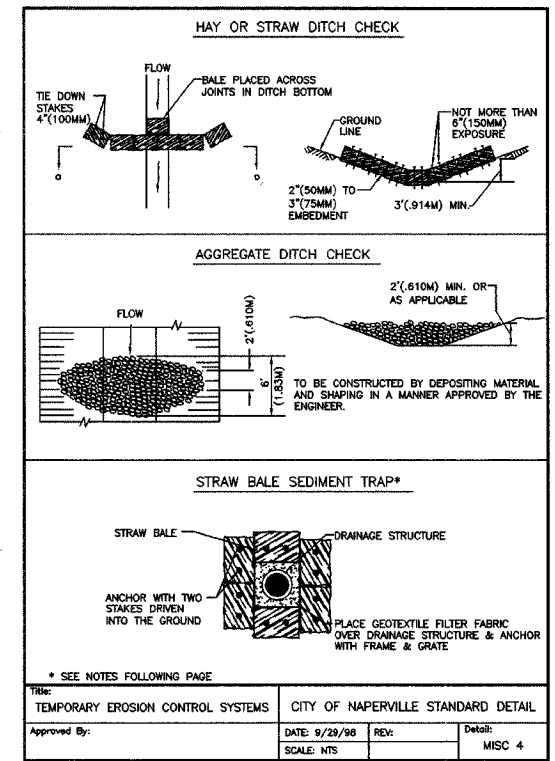


TRIANGULAR SILT DIKE INSTALLATION FOR ROADWAY DITCH OR DRAINAGE DITCH
NOT TO SCALE

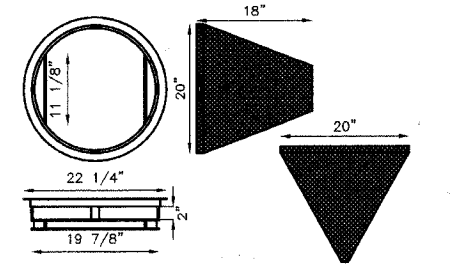
Each silt dike shall consist of an approximate 7 feet long triangular section of urethane foam covered with a geotextile fabric, and installed on a geotextile fabric apron. Triangular Silt Dikes shall be installed at the locations specified on the Erosion Control Plan, or as directed by the Engineer, and in accordance with the detail included in the plans and the manufacturer's recommendations.



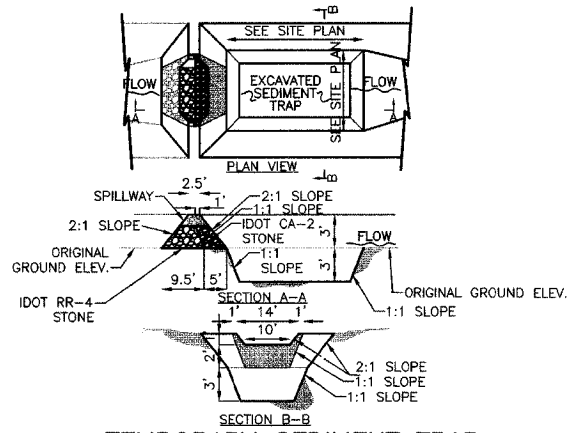
OUTLET CONTROL STRUCTURE
NOT TO SCALE



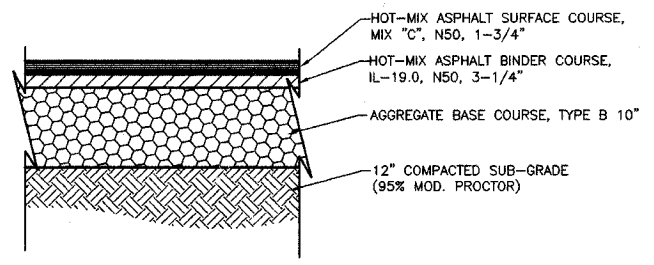
Title: TEMPORARY EROSION CONTROL SYSTEMS		CITY OF NAPERVILLE STANDARD DETAIL	
Approved By:	DATE: 9/25/98	REV:	Detail: MISC 4
	SCALE: NTS		



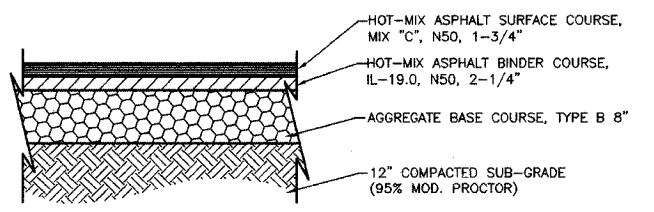
DRAINAGE STRUCTURE INLET FILTER
NOT TO SCALE



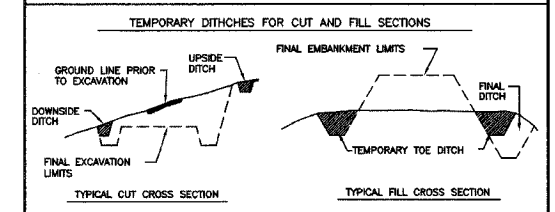
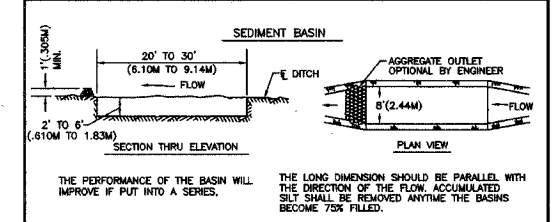
TEMPORARY SEDIMENT TRAP
NOT TO SCALE



HEAVY DUTY PAVEMENT
NOT TO SCALE



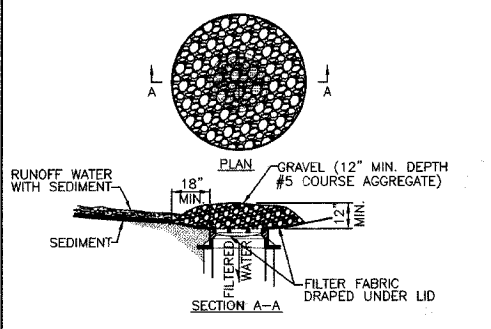
PARKING AREA PAVEMENT
NOT TO SCALE



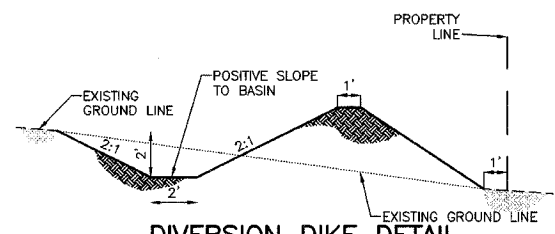
TEMPORARY DITCHES OR THE FINAL DITCH GRADES INCLUDED IN THE PLANS SHALL BE EXCAVATED AT THE EARLIEST OPPORTUNITY DURING CONSTRUCTION IN ORDER TO CONTROL RUNOFF FROM THE EMBANKMENT OR CUT SECTION PER ARTICLE 202.05 OF THE STANDARD SPECIFICATIONS. SOME MEANS OF TRAPPING SILTATION SHOULD BE PROVIDED AT THE OUTFLOW OF THESE DITCH SYSTEMS.

- NOTES:
1. ACTUAL CONFIGURATION AND LOCATION OF TEMPORARY EROSION CONTROL SYSTEMS SHALL BE SHOWN ON THE PLANS OR AS DIRECTED BY THE ENGINEER.
 2. DITCH CHECKS AND SEDIMENT BASINS SHOULD BE CONSTRUCTED AT APPROPRIATE INTERVALS ALONG THE WATERWAY TO BE EFFECTIVE.
 3. WHERE MORE THAN ONE ROW OF BALES USED, STAGGER BALES TO COVER JOINTS.
 4. WHERE BALES ARE SHOWN STAKED, A MINIMUM OF TWO PER BALE SHALL BE USED.
 5. THE TEMPORARY EROSION CONTROL SYSTEMS INSTALLED BY THE CONTRACTOR SHALL BE PROPERLY MAINTAINED AS DIRECTED BY THE ENGINEER TO CONTROL SILTATION AT ALL TIMES DURING THE LIFE OF THE CONTRACT.

Title: TEMPORARY EROSION CONTROL SYSTEMS		CITY OF NAPERVILLE STANDARD DETAIL	
Approved By:	DATE: 9/23/98	REV:	Detail: MISC 5
	SCALE: NTS		



INLET PROTECTION
NOT TO SCALE



DIVERSION DIKE DETAIL
NOT TO SCALE

REVISIONS	
NAME	DATE
PRE-FINAL SUBMITTAL	05.31.07
FINAL SUBMITTAL	08.31.07

CITY OF NAPERVILLE
CONSTRUCTION DETAILS
95TH STREET PARK AND RIDE

DATE: 11/26/2007
DESIGNED BY: RTM
TECHNICIAN: JRR
CHECKED BY: JRV