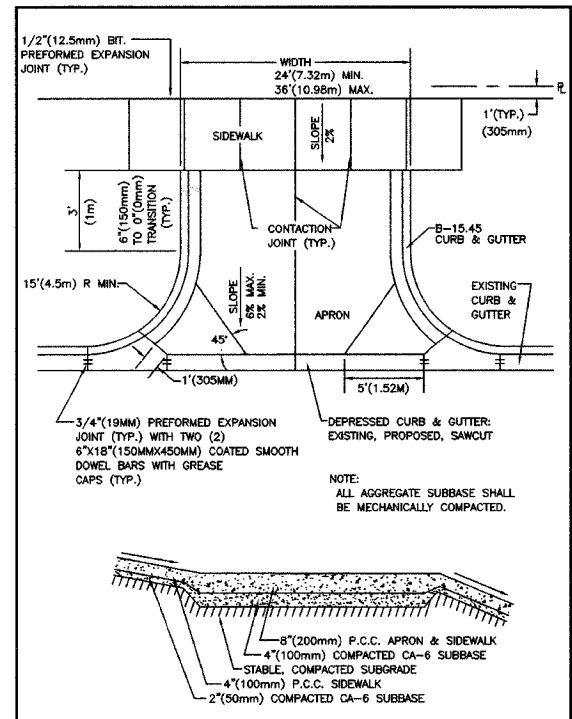
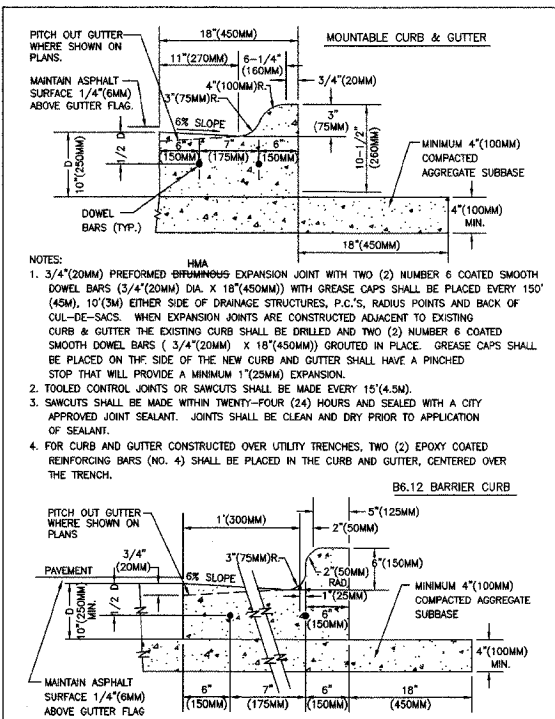


|           |                |         |              |           |
|-----------|----------------|---------|--------------|-----------|
| PANEL NO. | SECTION        | COUNTY  | TOTAL SHEETS | SHEET NO. |
| *         | 06-00132-00-PK | WILL    | 15           | 13        |
| STA.      | .*             | TO STA. | *.*          |           |
|           |                | BLANK   |              |           |

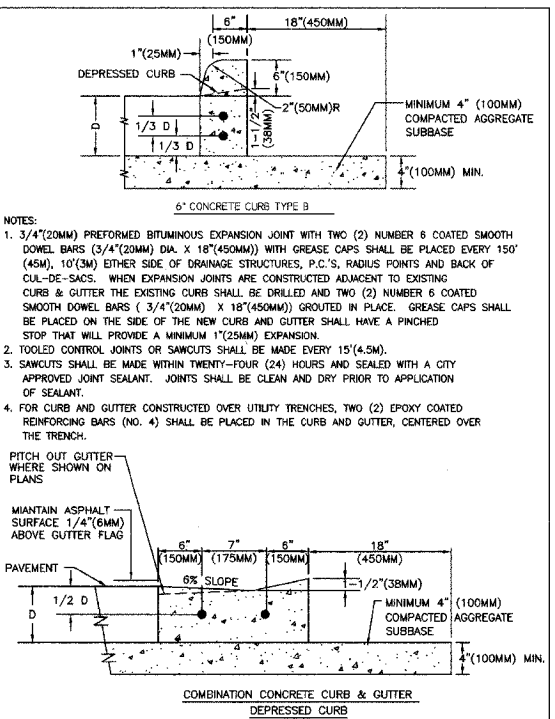
CONTRACT NUMBER 83974



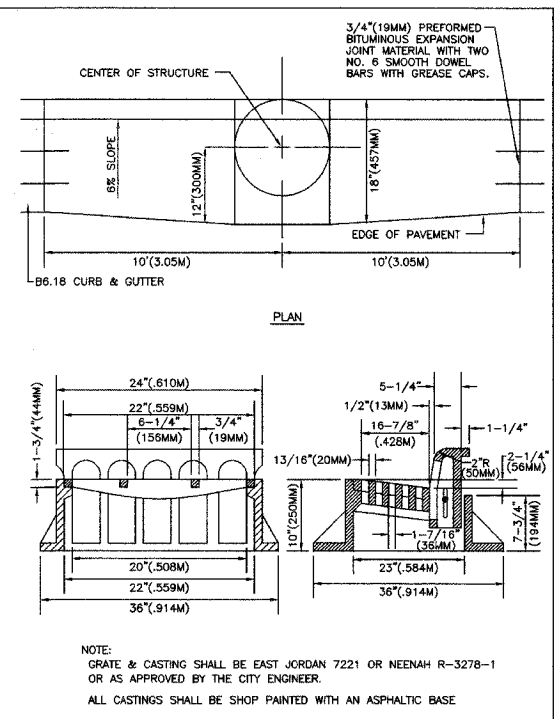
Title: TYPICAL COMMERCIAL DRIVEWAY DETAIL CITY OF NAPERVILLE STANDARD DETAIL  
 Approved By: DATE: 6/2/98 REV: Detail: PVMT 10  
 SCALE: NTS



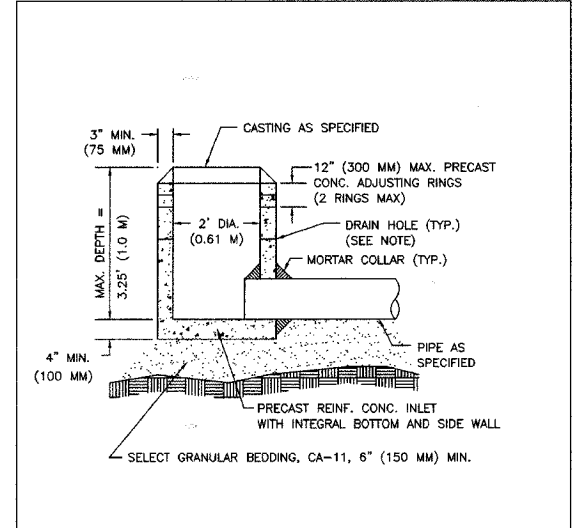
Title: CURB & GUTTER CITY OF NAPERVILLE STANDARD DETAIL  
 Approved By: DATE: 6/2/98 REV: Detail: PVMT 11  
 SCALE: NTS



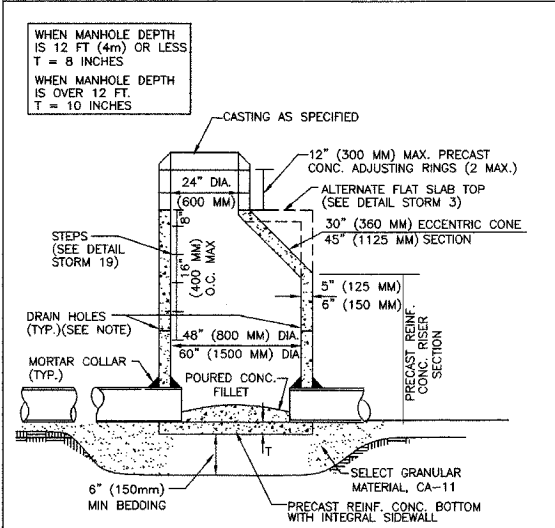
Title: CURB & GUTTER CITY OF NAPERVILLE STANDARD DETAIL  
 Approved By: DATE: 6/8/98 REV: Detail: PVMT 12  
 SCALE: NTS



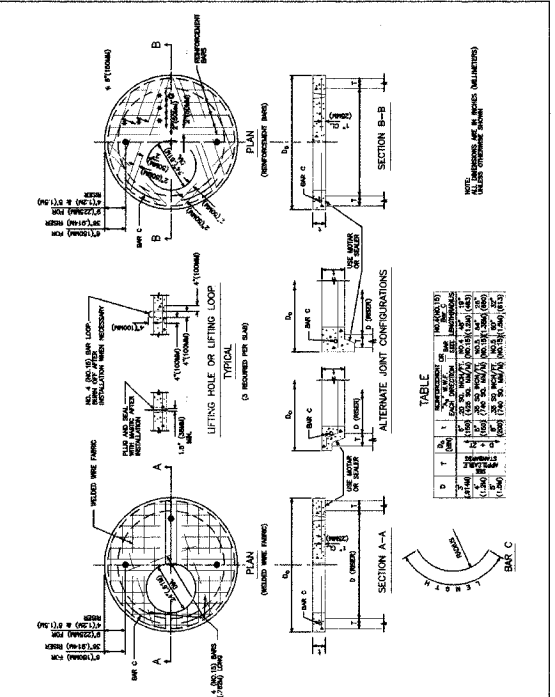
Title: STORM SEWER CASTING DETAIL FOR B6.12 CURB & GUTTER CITY OF NAPERVILLE STANDARD DETAIL  
 Approved By: DATE: 6/8/98 REV: Detail: PVMT 13  
 SCALE: NTS



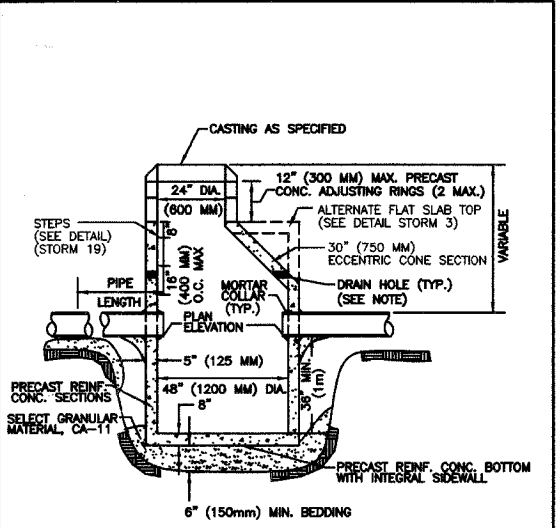
Title: INLET TYPE A CITY OF NAPERVILLE STANDARD DETAIL  
 Approved By: DATE: 6/12/2001 REV: Detail: STORM 1  
 SCALE: NTS



Title: MANHOLE TYPE A CITY OF NAPERVILLE STANDARD DETAIL  
 Approved By: DATE: 6/12/2001 REV: Detail: STORM 2  
 SCALE: NTS



Title: FLAT SLAB TOP PRECAST REINFORCED CONCRETE CITY OF NAPERVILLE STANDARD DETAIL  
 Approved By: DATE: 3/11/98 REV: Detail: STORM 3  
 SCALE: NTS



Title: CATCHBASIN TYPE A CITY OF NAPERVILLE STANDARD DETAIL  
 Approved By: DATE: 6/12/2001 REV: Detail: STORM 4  
 SCALE: NTS

CITY OF NAPERVILLE  
**CONSTRUCTION DETAILS**  
 95TH STREET PARK AND RIDE

| REVISIONS           |          |
|---------------------|----------|
| NAME                | DATE     |
| PRE-FINAL SUBMITTAL | 05.31.07 |
| FINAL SUBMITTAL     | 08.31.07 |

DATE: 11/26/2007  
 DESIGNED BY: RTM  
 TECHNICIAN: JRR  
 CHECKED BY: JRV