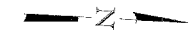


F.A. RTEL.	SECTION	COUNTY	TOTAL SHEETS	SHEET NO.
2830	01-00133-08-BR	WILL	37	5
STA.		TO STA.		
FED. ROAD DIST. NO.	ILLINOIS	FED. AID PROJECT		
CONTRACT NO. 83989				



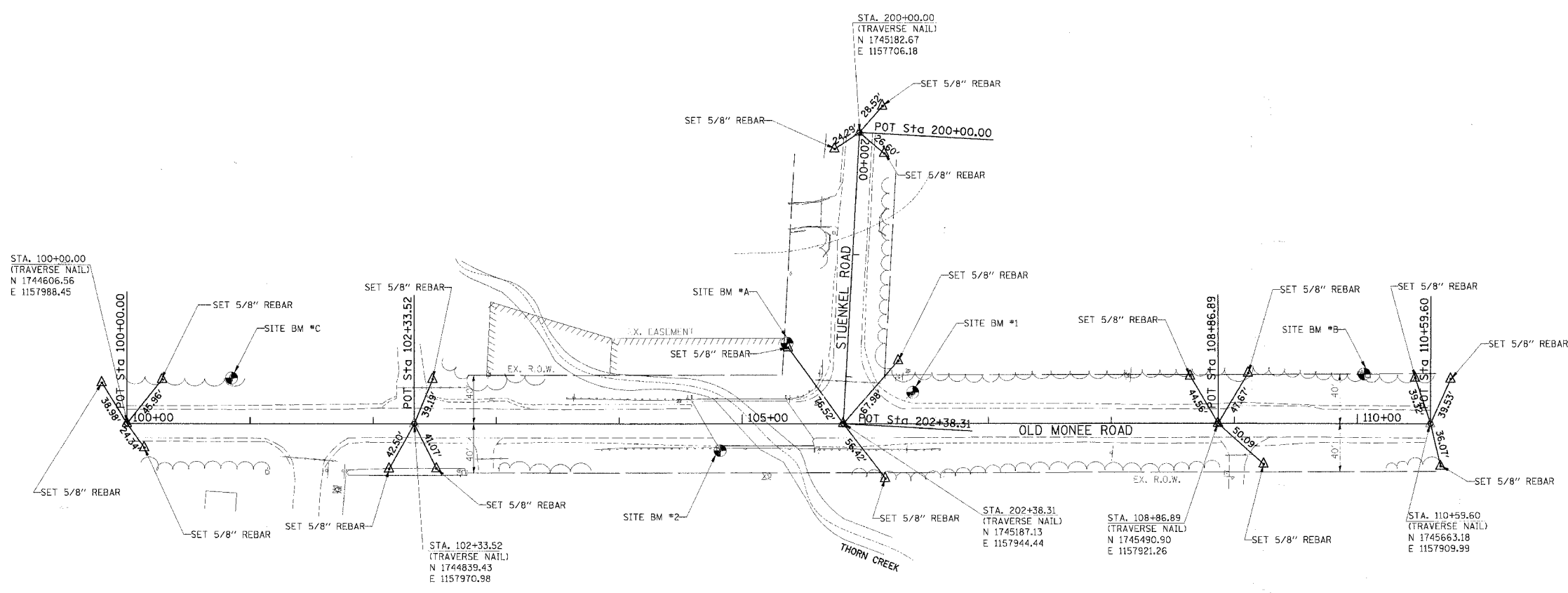
SITE BM #1  
TOP OF FIRE HYDRANT AT NORTHWEST CORNER OF STEUNKEL ROAD AND OLD MONEE ROAD INTERSECTION. ELEVATION = 719.04

SITE BM #2  
SQUARE CUT LOCATED ON SOUTHWEST CORNER OF SOUTHEAST WINGWALL OF OLD MONEE ROAD BRIDGE OVER THORN CREEK. ELEVATION = 718.03

SITE BM #A  
RAILROAD SPIKE SET IN EAST FACE OF POWER POLE AT SOUTHWEST CORNER OF STEUNKEL ROAD AND OLD MONEE ROAD INTERSECTION. ELEVATION = 716.16

SITE BM #B  
RAILROAD SPIKE SET IN EAST FACE OF POWER POLE ON WEST SIDE OF OLD MONEE ROAD, APPROXIMATELY +/- 420', NORTH OF STEUNKEL ROAD. ELEVATION = 725.17

SITE BM #C  
RAILROAD SPIKE SET IN EAST FACE OF POWER POLE ON WEST SIDE OF OLD MONEE ROAD, APPROXIMATELY +/- 66', SOUTH OF OAK HILL DRIVE. ELEVATION = 722.87



PLOT DATE = 11/21/2007  
 PLOT TIME = 11:33:32 AM  
 PLOT SCALE = 1:50  
 USER NAME = mwood

REVISIONS		ILLINOIS DEPARTMENT OF TRANSPORTATION	
NAME	DATE		
		ALIGNMENT, TIES AND BENCHMARKS	
		OLD MONEE ROAD	
		OVER THORN CREEK	
SCALE: VERT. N/A		DRAWN BY:	
DATE: 11/26/07		CHECKED BY: DCJ	