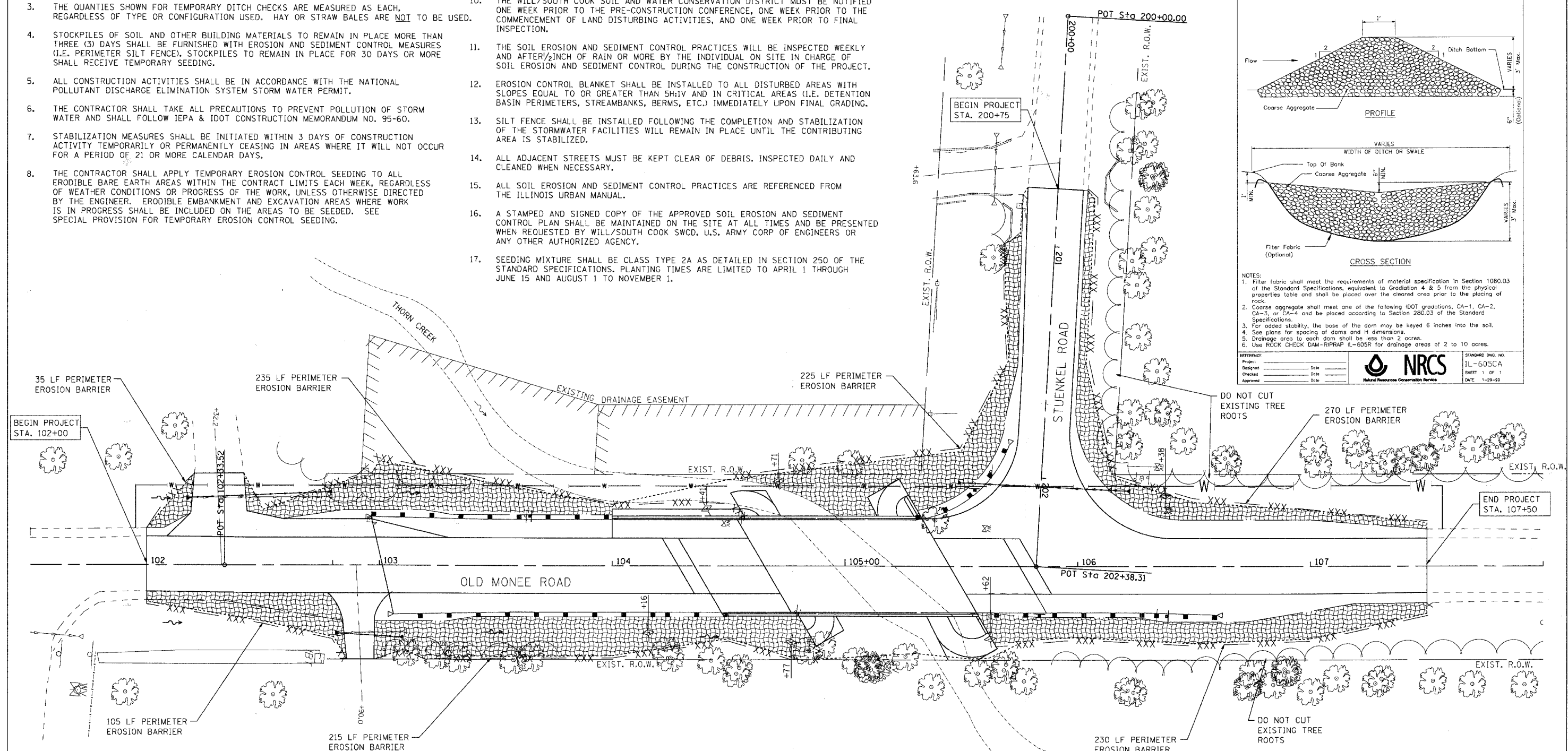
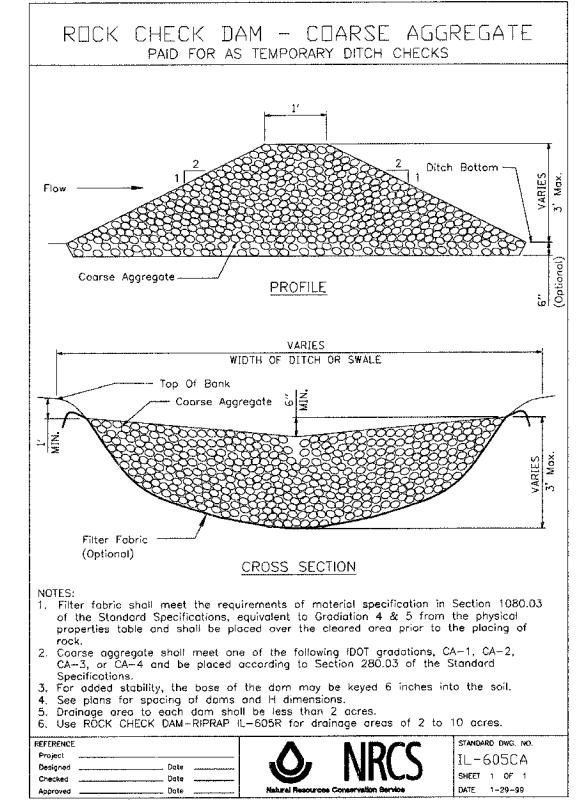


F.A. RTE.	SECTION	COUNTY	TOTAL SHEETS	SHEET NO.
2830	01-00133-08-BR	WILL	37	10
STA.		TO STA.		
FED. ROAD DIST. NO.		ILLINOIS	FED. AID PROJECT	
CONTRACT NO. 83989				

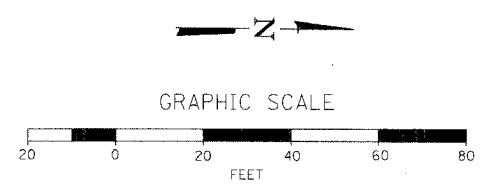
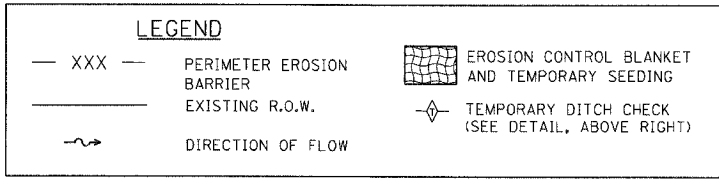
**EROSION CONTROL NOTES**

- THE CONTRACTOR WILL BE REQUIRED TO IMPLEMENT AND MAINTAIN EROSION CONTROL MEASURES IMMEDIATELY AFTER STRIPPING OF EXISTING VEGETATION.
- NO RUNOFF FROM STRIPPED AREAS WILL LEAVE THE SITE OTHER THAN THROUGH SEDIMENTATION/STILLING BASINS. THE CONTRACTOR WILL ADJUST HIS OPERATIONS AND IMPLEMENT EROSION CONTROL MEASURES ACCORDINGLY.
- THE QUANTITIES SHOWN FOR TEMPORARY DITCH CHECKS ARE MEASURED AS EACH, REGARDLESS OF TYPE OR CONFIGURATION USED. HAY OR STRAW BALES ARE NOT TO BE USED.
- STOCKPILES OF SOIL AND OTHER BUILDING MATERIALS TO REMAIN IN PLACE MORE THAN THREE (3) DAYS SHALL BE FURNISHED WITH EROSION AND SEDIMENT CONTROL MEASURES (I.E. PERIMETER SILT FENCE). STOCKPILES TO REMAIN IN PLACE FOR 30 DAYS OR MORE SHALL RECEIVE TEMPORARY SEEDING.
- ALL CONSTRUCTION ACTIVITIES SHALL BE IN ACCORDANCE WITH THE NATIONAL POLLUTANT DISCHARGE ELIMINATION SYSTEM STORM WATER PERMIT.
- THE CONTRACTOR SHALL TAKE ALL PRECAUTIONS TO PREVENT POLLUTION OF STORM WATER AND SHALL FOLLOW IEPA & IDOT CONSTRUCTION MEMORANDUM NO. 95-60.
- STABILIZATION MEASURES SHALL BE INITIATED WITHIN 3 DAYS OF CONSTRUCTION ACTIVITY TEMPORARILY OR PERMANENTLY CEASING IN AREAS WHERE IT WILL NOT OCCUR FOR A PERIOD OF 21 OR MORE CALENDAR DAYS.
- THE CONTRACTOR SHALL APPLY TEMPORARY EROSION CONTROL SEEDING TO ALL ERODIBLE BARE EARTH AREAS WITHIN THE CONTRACT LIMITS EACH WEEK, REGARDLESS OF WEATHER CONDITIONS OR PROGRESS OF THE WORK, UNLESS OTHERWISE DIRECTED BY THE ENGINEER. ERODIBLE EMBANKMENT AND EXCAVATION AREAS WHERE WORK IS IN PROGRESS SHALL BE INCLUDED ON THE AREAS TO BE SEED. SEE SPECIAL PROVISION FOR TEMPORARY EROSION CONTROL SEEDING.
- THE SOIL AND WATER CONSERVATION DISTRICT IS RESPONSIBLE FOR CONDUCTING SITE VISITS AND VERIFYING THAT THE PRACTICES ARE WORKING PROPERLY AND DETERMINE IF ADDITIONAL PRACTICES ARE NEEDED FOR BETTER SOIL EROSION AND SEDIMENT CONTROL. IF ADDITIONAL PRACTICES ARE DEEMED NECESSARY BY THE SWCD THE CONTRACTOR WILL IMPLEMENT THE PRACTICES IN A TIMELY MANNER.
- THE WILL/SOUTH COOK SOIL AND WATER CONSERVATION DISTRICT MUST BE NOTIFIED ONE WEEK PRIOR TO THE PRE-CONSTRUCTION CONFERENCE, ONE WEEK PRIOR TO THE COMMENCEMENT OF LAND DISTURBING ACTIVITIES, AND ONE WEEK PRIOR TO FINAL INSPECTION.
- THE SOIL EROSION AND SEDIMENT CONTROL PRACTICES WILL BE INSPECTED WEEKLY AND AFTER 1/2 INCH OF RAIN OR MORE BY THE INDIVIDUAL ON SITE IN CHARGE OF SOIL EROSION AND SEDIMENT CONTROL DURING THE CONSTRUCTION OF THE PROJECT.
- EROSION CONTROL BLANKET SHALL BE INSTALLED TO ALL DISTURBED AREAS WITH SLOPES EQUAL TO OR GREATER THAN 5H:1V AND IN CRITICAL AREAS (I.E. DETENTION BASIN PERIMETERS, STREAMBANKS, BERMS, ETC.) IMMEDIATELY UPON FINAL GRADING.
- SILT FENCE SHALL BE INSTALLED FOLLOWING THE COMPLETION AND STABILIZATION OF THE STORMWATER FACILITIES WILL REMAIN IN PLACE UNTIL THE CONTRIBUTING AREA IS STABILIZED.
- ALL ADJACENT STREETS MUST BE KEPT CLEAR OF DEBRIS. INSPECTED DAILY AND CLEANED WHEN NECESSARY.
- ALL SOIL EROSION AND SEDIMENT CONTROL PRACTICES ARE REFERENCED FROM THE ILLINOIS URBAN MANUAL.
- A STAMPED AND SIGNED COPY OF THE APPROVED SOIL EROSION AND SEDIMENT CONTROL PLAN SHALL BE MAINTAINED ON THE SITE AT ALL TIMES AND BE PRESENTED WHEN REQUESTED BY WILL/SOUTH COOK SWCD, U.S. ARMY CORP OF ENGINEERS OR ANY OTHER AUTHORIZED AGENCY.
- SEEDING MIXTURE SHALL BE CLASS TYPE 2A AS DETAILED IN SECTION 250 OF THE STANDARD SPECIFICATIONS. PLANTING TIMES ARE LIMITED TO APRIL 1 THROUGH JUNE 15 AND AUGUST 1 TO NOVEMBER 1.



**TEMPORARY EROSION CONTROL SEQUENCE OF CONSTRUCTION**

- ESTABLISH TEMPORARY EROSION CONTROL MEASURES AND ERECT PERIMETER EROSION BARRIER ALONG SITE BOUNDARIES PRIOR TO EARTHWORK.
- INSTALL DITCH CHECKS IMMEDIATELY AFTER DITCH GRADING IS COMPLETED.
- INSTALL TEMPORARY EROSION CONTROL SEEDING.



REVISIONS		ILLINOIS DEPARTMENT OF TRANSPORTATION
NAME	DATE	
		<b>SOIL EROSION AND SEDIMENT CONTROL PLAN</b> <b>OLD MONEE ROAD OVER THORN CREEK</b>  SCALE: VERT. N/A HORIZ. 1" = 20' DATE: 1-11-2008 DRAWN BY: MDJ CHECKED BY: DCJ

**SEC GROUP INC.**  
Smith Engineering Consultants • SEC Automation • SEC Planning  
4500 Prime Parkway, Maitland, IL 60050  
1.815.385.1778 • 1.815.385.1781  
www.secgroupinc.com • engineering@secgroupinc.com

PLOT DATE: 1/11/2008  
 FILE NAME: N:\Jobs\Smith\2008\1040105 WILL Old Monee Road\cad\Trans\eroston\848105-erodp  
 PLOT SCALE: 1:120  
 USER NAME: jwood