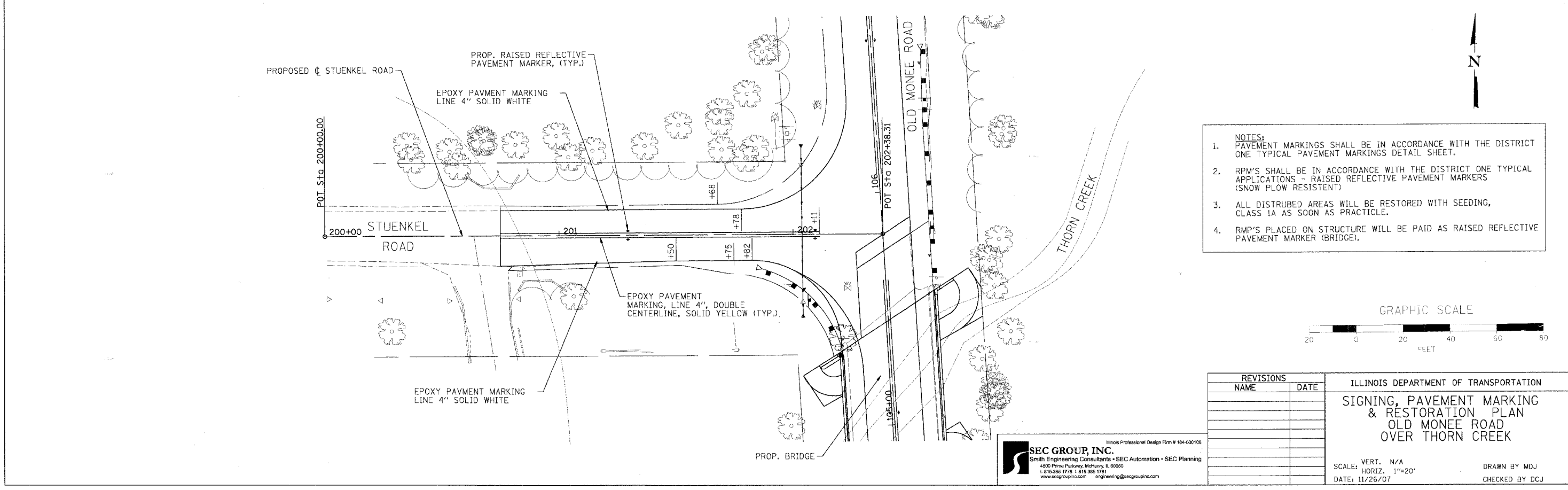
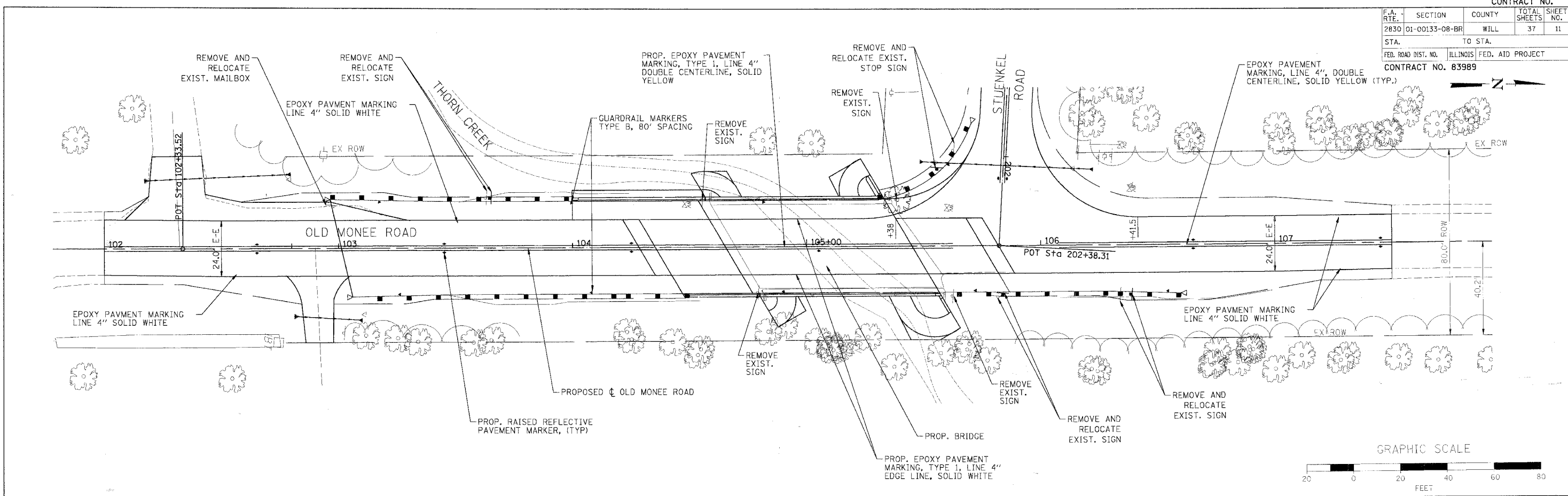


CONTRACT NO.

F.A. RTE.	SECTION	COUNTY	TOTAL SHEETS	SHEET NO.
2830	01-00133-08-BR	WILL	37	11
STA.	TO STA.			
FED. ROAD DIST. NO.	ILLINOIS FED. AID PROJECT			
CONTRACT NO. 83989				



- NOTES:
- PAVEMENT MARKINGS SHALL BE IN ACCORDANCE WITH THE DISTRICT ONE TYPICAL PAVEMENT MARKINGS DETAIL SHEET.
 - RPW'S SHALL BE IN ACCORDANCE WITH THE DISTRICT ONE TYPICAL APPLICATIONS - RAISED REFLECTIVE PAVEMENT MARKERS (SNOW PLOW RESISTENT)
 - ALL DISTURBED AREAS WILL BE RESTORED WITH SEEDING, CLASS 1A AS SOON AS PRACTICABLE.
 - RMP'S PLACED ON STRUCTURE WILL BE PAID AS RAISED REFLECTIVE PAVEMENT MARKER (BRIDGE).

REVISIONS		ILLINOIS DEPARTMENT OF TRANSPORTATION	
NAME	DATE	SIGNING, PAVEMENT MARKING & RESTORATION PLAN OLD MONEE ROAD OVER THORN CREEK	
		SCALE: VERT. N/A	DRAWN BY MDJ
		SCALE: HORIZ. 1"=20'	CHECKED BY DCJ
		DATE: 11/26/07	

SEC GROUP, INC.
 Smith Engineering Consultants • SEC Automation • SEC Planning
 4500 Prima Parkway, Mokena, IL 60450
 1.815.385.1778 • 815.385.1781
 www.secgroupinc.com • engineering@secgroupinc.com

PLOT DATE = 11/21/2007
 PLOT SCALE = 1"=20'
 REFERENCE = REF