

ROUTE NO.	SECTION	COUNTY	SHEET NO.	SHEET
FAU 2830	01-00133-08-BR	WILL	37	13
FED. ROAD DIST. NO.	ILLINOIS	FED. AID PROJECT		
1				

SHEET NO. S-2

S-19 SHEETS

Contract #83989

### GENERAL NOTES

Fasteners shall be AASHTO M164 Type 1, mechanically galvanized bolts. Bolts  $\frac{7}{8}$  in.  $\phi$ , holes  $\frac{15}{16}$  in.  $\phi$ , unless otherwise noted.

Calculated weight of Structural Steel = 79,830 lbs.

No field welding is permitted except as specified in the contract documents.

Reinforcement bars shall conform to the requirements of ASTM A 706 Gr 60 (IL Modified). See Special Provisions.

Reinforcement bars designated (E) shall be epoxy coated.

The Inorganic Zinc Rich Primer / Acrylic / Acrylic Paint System shall be used for shop and field painting of new structural steel except where otherwise noted. The color of the final finish coat for all interior steel surfaces shall be gray, Munsell No. 5B 7/1. The color of the final finish coat for the exterior and bottom flange of the fascia beams shall be gray, Munsell 5B 7/1. See Special Provision for "Cleaning and Painting New Metal Structures".

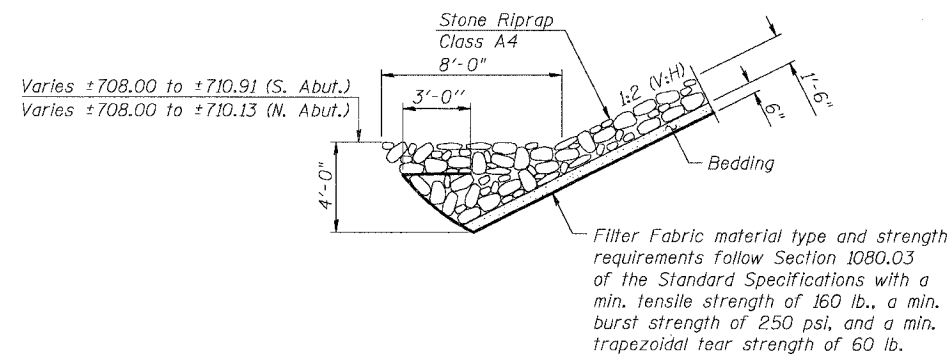
Layout of slope protection system may be varied in the field to suit ground conditions as directed by the Engineer.

The Contractor shall drive test piles to 110% of the nominal required bearing specified in production locations at substructures specified or approved by the Engineer before ordering the remainder of piles.

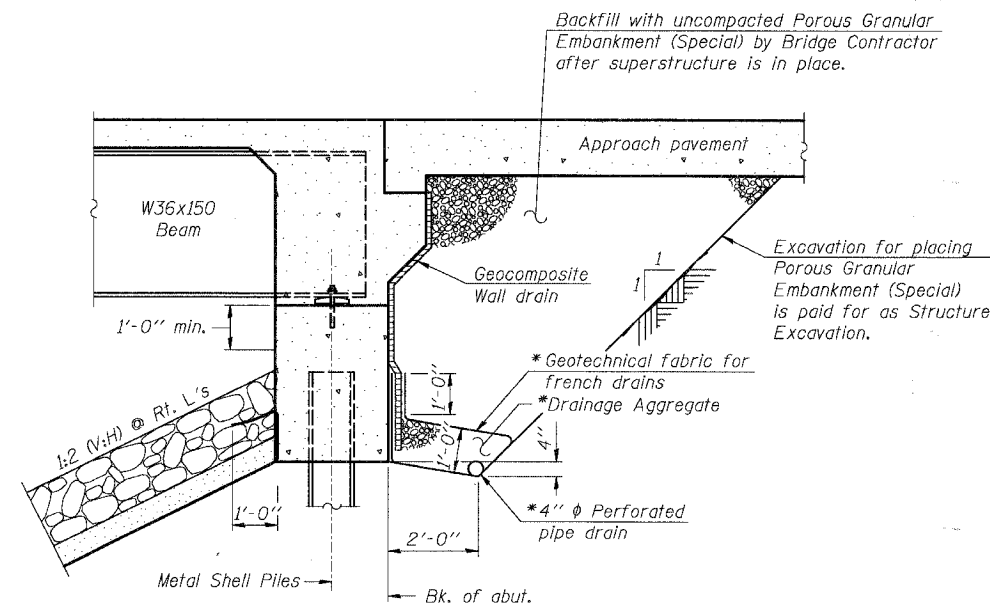
The information shown in these plans concerning the type and location of utilities is not guaranteed to be accurate or all-inclusive. The Contractor is responsible for making his own determination as to the existence of type, size and location of all underground and overhead utilities as may be necessary to avoid conflict with construction operations and/or damage to the utility.

Existing water main shall be field located prior to drilling piling. Contractor shall verify that existing water main within limits of Bridge Construction has been abandoned prior to excavation. Coordination with this work (by others), if required shall be included under Mobilization. The cost of removal of existing water main where in conflict with the proposed structures shall be included in the Lump Sum unit price for Removal of Existing Structures.

Cost of filling metal shell piles with concrete is included in Driving Piles.



### STONE RIPRAP ANCHOR DETAIL



### SECTION THRU INTEGRAL ABUTMENT (Horiz. dim. @ Rt. L's)

\* Included in the cost of Pipe Underdrains for Structures.

Note:  
All drainage system components shall extend to 2'-0" from the end of each wingwall except an outlet pipe shall extend until intersecting with the side slopes. The pipes shall drain into concrete headwalls. (See Article 601.05 of the Standard Specifications and Highway Standard 601101).

### TOTAL BILL OF MATERIAL

ITEM	UNIT	SUPER	SUB	TOTAL
Porous Granular Embankment (Special)	Cu. Yd.		160	160
Stone Riprap, Class A4	Sq. Yd.		325	325
Filter Fabric	Sq. Yd.		325	325
Removal of Existing Structures	Each			1
Structure Excavation	Cu. Yd.		290	290
Floor Drains	Each	10		10
Concrete Structures	Cu. Yd.		73	73
Concrete Superstructure	Cu. Yd.	152		152
Bridge Deck Grooving	Sq. Yd.	336		336
Protective Coat	Sq. Yd.	457		457
Furnishing and Erecting Structural Steel	L. Sum	1		1
Stud Shear Connectors	Each	1,926		1,926
Bar Splicers	Each	48		48
Reinforcement Bars, Epoxy Coated	Pound	26,330	10,660	36,990
Furnishing Metal Shell Piles 14"	Foot		931	931
Furnishing Steel Piles HP 12x53	Foot		225	225
Driving Piles	Foot		1156	1156
Test Pile Metal Shells	Each		2	2
Anchor Bolts, 1"	Each	24		24
Name Plates	Each	1		1
Geocomposite Wall Drain	Sq. Yd.		78	78
Pipe Underdrains for Structures, 4"	Foot		136	136

DESIGNED	AEU
CHECKED	RGD
DRAWN	WJH
CHECKED	AEU

Illinois Professional Design Firm # 184-000108  
**SEC GROUP, INC.**  
 Smith Engineering Consultants • SEC Automation • SEC Planning  
 4500 Prime Parkway, Mokena, IL 60450  
 T. 815.385.1776 F. 815.385.1781  
 www.secgroupinc.com

ILLINOIS DEPARTMENT OF TRANSPORTATION

GENERAL DATA  
 OLD MONEE ROAD (COUNTY HIGHWAY 48)  
 OVER THORN CREEK  
 WILL COUNTY  
 SECTION NO. 01-00133-08-BR  
 STRUCTURE NO. 099-3379

DATE: 1-11-2008