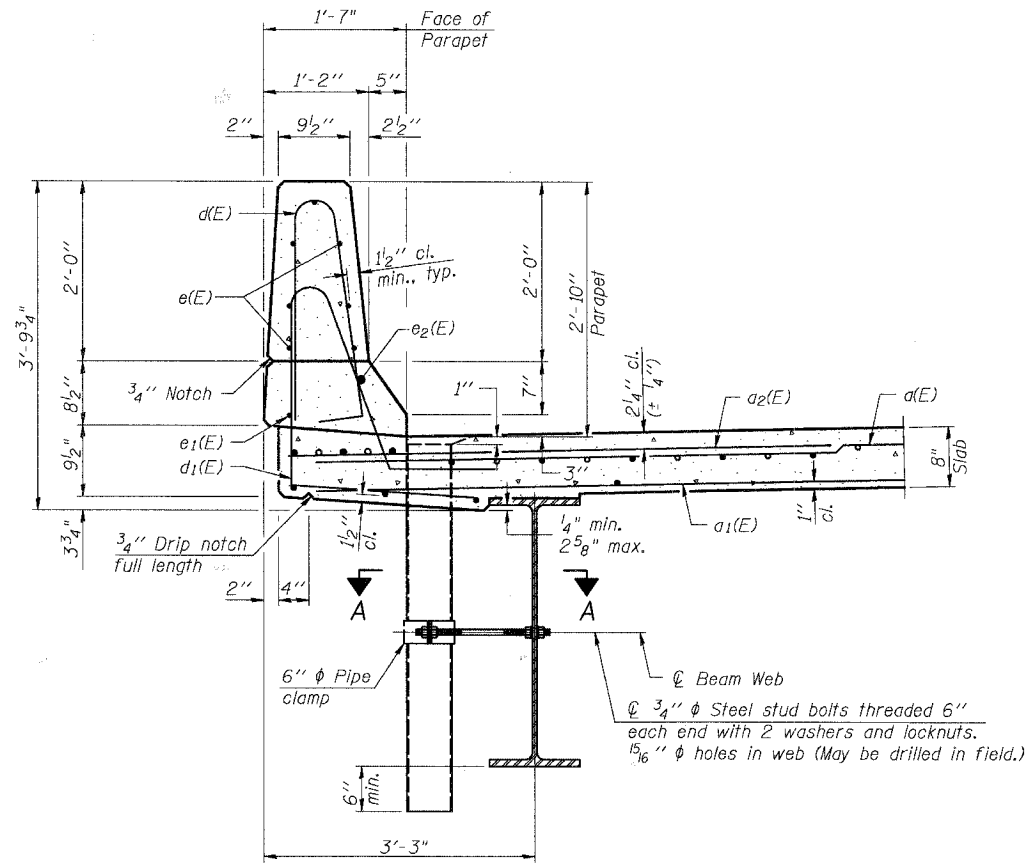


ROUTE NO.	SECTION	COUNTY	TOTAL SHEETS	SHEET NO.
FAU 2830	01-00133-08-BR	WILL	37	16
FED. ROAD DIST. NO.	ILLINOIS	FED. AID PROJECT		
1				

SHEET NO. S-7
S-19 SHEETS

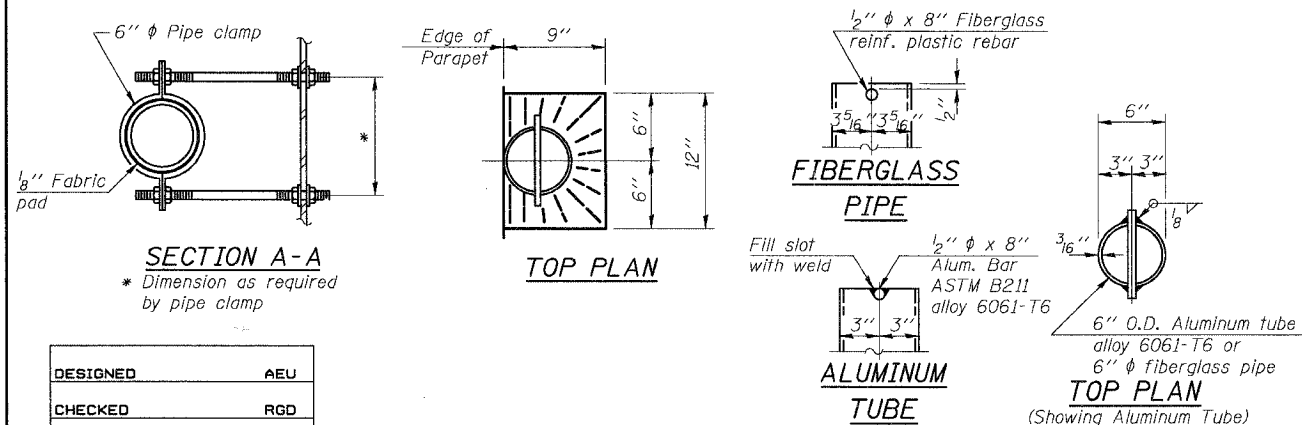
Contract #83989



SECTION THRU PARAPET

Notes:

The exterior surfaces of the floor drains shall be painted with the finish coat as specified in the special provisions for Cleaning and Painting New Metal Structures. The exterior surfaces of the drains shall be cleaned according to Steel Structures Painting Council's Spec. SSPC-SPI prior to painting. Fiberglass pipe shall conform to ASTM D 2996, with short-time rupture strength hoop tensile stress of 30,000 p.s.i. minimum.



DESIGNED	AEU
CHECKED	RGD
DRAWN	WJH
CHECKED	AEU

ILLINOIS DEPARTMENT OF TRANSPORTATION

SUPERSTRUCTURE DETAILS
OLD MONEE ROAD (COUNTY HIGHWAY 48)
OVER THORN CREEK
WILL COUNTY
SECTION NO. 01-00133-08-BR
STRUCTURE NO. 099-3379

DATE: 11-26-2007

