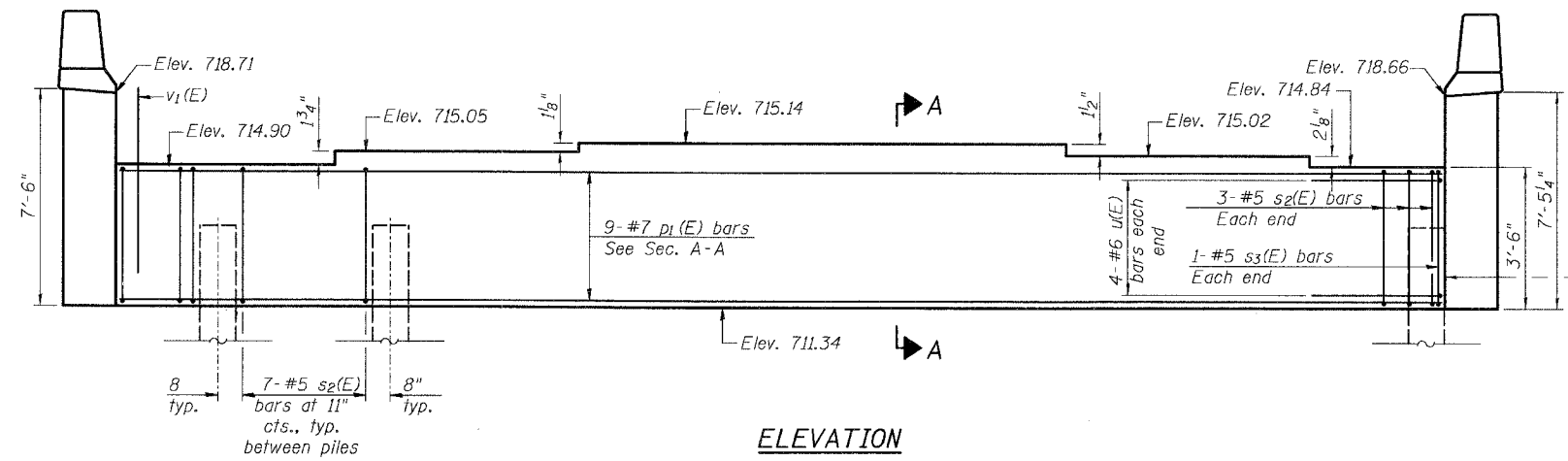


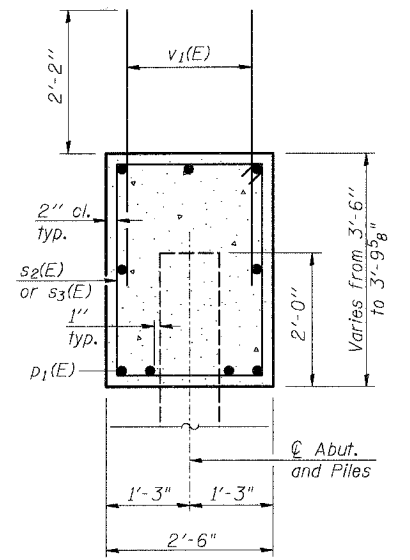
ROUTE NO.	SECTION	COUNTY	SHEETS	SHEET
FAU 2830	01-00133-08-BR	WILL	37	23
FED. ROAD DIST. NO.	ILLINOIS	FED. AID PROJECT		
1				

SHEET NO. S-12  
S-19 SHEETS

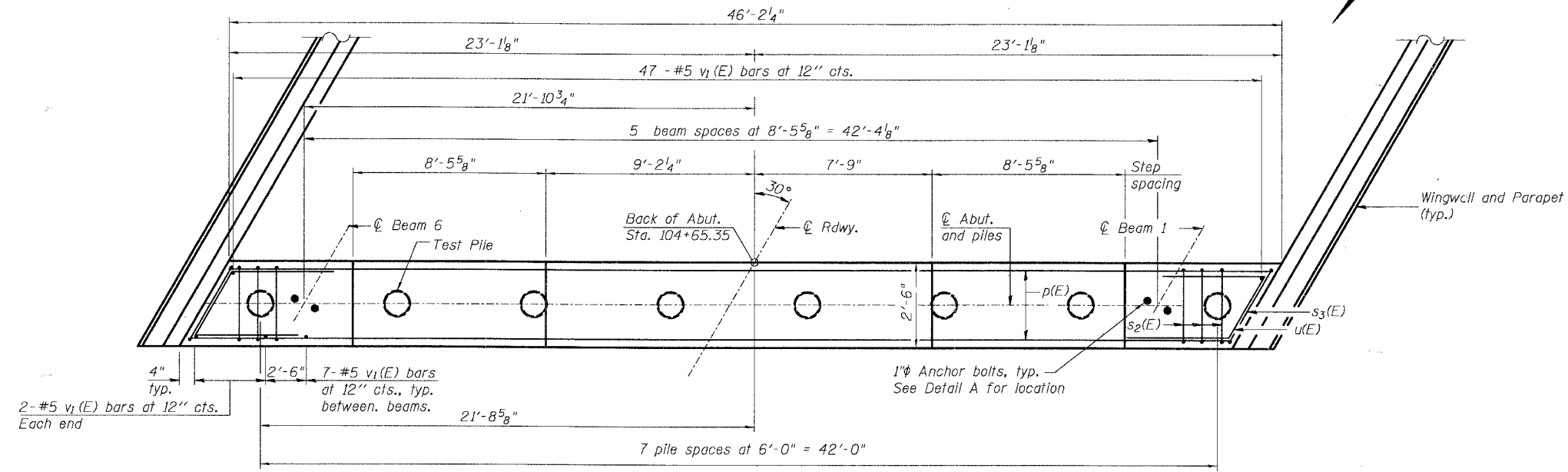
Contract #83989



ELEVATION



SEC. THRU A-A



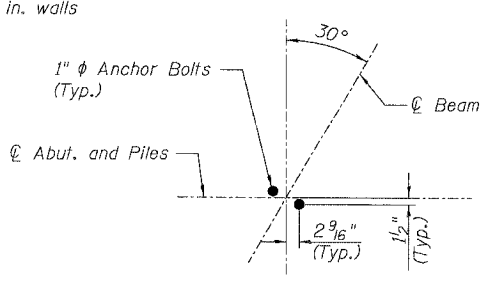
PLAN

BILL OF MATERIAL

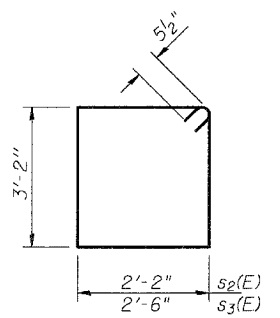
Bar	No.	Size	Length	Shape
p1(E)	9	#7	45'-10"	—
s2(E)	48	#5	11'-7"	□
s3(E)	2	#5	12'-3"	□
u(E)	8	#6	9'-6"	⌋
v1(E)	86	#5	4'-4"	—
Concrete Structures			Cu. Yd.	15.8
Reinforcement Bars, Epoxy Coated			Pound	1,950
Structure Excavation			Cu. Yd.	70
Furnishing Metal Shell Piles 14"			Foot	434
Driving Piles			Foot	434
Test Pile Metal Shells			Each	1

PILE DATA

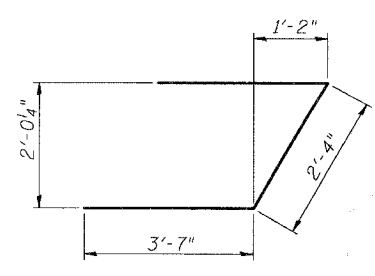
Type & Size: Metal Shell - 14 in. dia x 0.312 in. walls  
Nominal Required Bearing: 390 kips  
Allowable Resistance Available: 130 kips  
Est. Length: 62 ft.  
No. Production Piles: 7  
No. Test Piles: 1



DETAIL A



BARS s2(E) & s3(E)



BAR u(E)

Notes: Pour steps monolithically with cap.  
For details of piles see sheet S-15.  
The test piles shall be driven to 110% of the Nominal Required Bearing indicated in the pile data information.  
The Metal Shell piles shall be according to ASTM A252 Grade 3.

DESIGNED	AEU
CHECKED	RGD
DRAWN	WJH
CHECKED	AEU

**SEC GROUP, INC.**  
Illinois Professional Design Firm # 184-00108  
Smith Engineering Consultants • SEC Automation • SEC Planning  
4500 Prime Parkway, McHenry, IL 60050  
t 815.385.1778 • f 815.385.1751  
www.secgroupinc.com

ILLINOIS DEPARTMENT OF TRANSPORTATION  
SOUTH ABUTMENT  
OLD MONEE ROAD (COUNTY HIGHWAY 48)  
OVER THORN CREEK  
WILL COUNTY  
SECTION NO. 01-00133-08-BR  
STRUCTURE NO. 099-3379  
DATE: 1-11-2008